



Neato Botvac D75 Brushes Replacement

This steps will help you take out the main brush of your device to clean it or replace it.

Written By: Juan Cornejo



INTRODUCTION

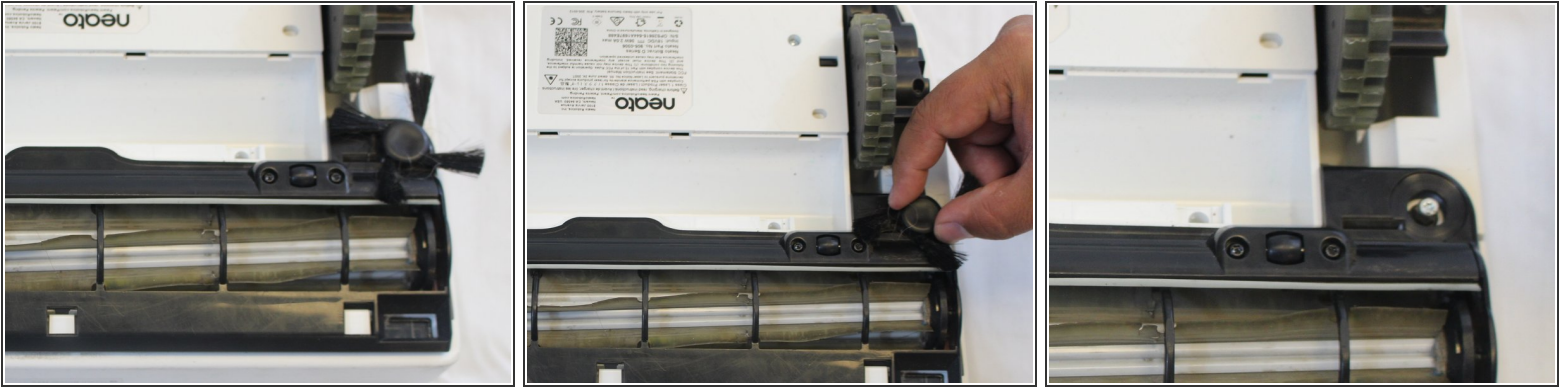
Hello! Today I will show you the steps that will help you take out the main brush of your device to clean it or replace it



TOOLS:

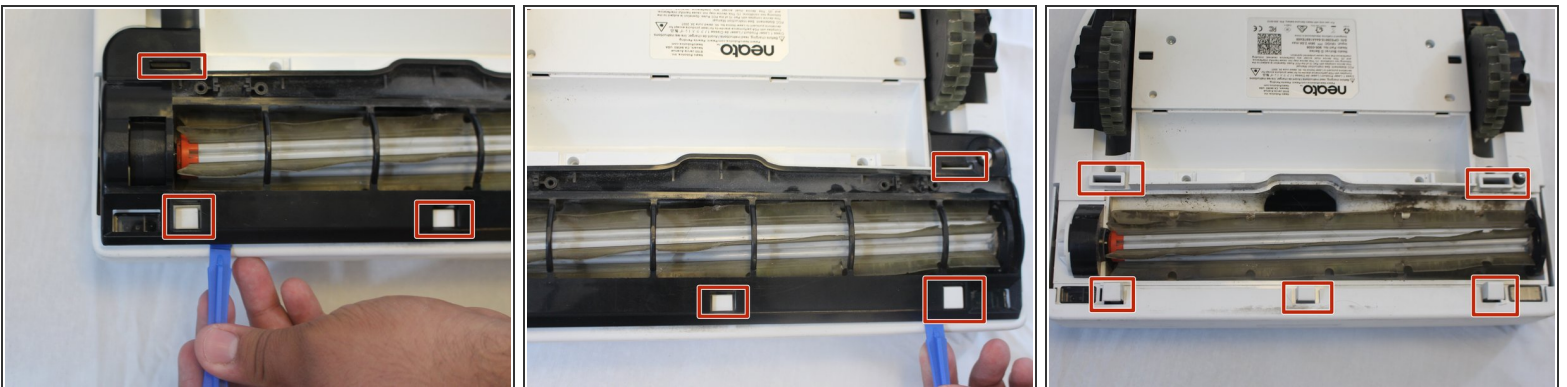
- [T10 Torx Screwdriver](#) (1)
-

Step 1 — Brushes



- To remove the rotary brush simply grasp it firmly and pull it off.

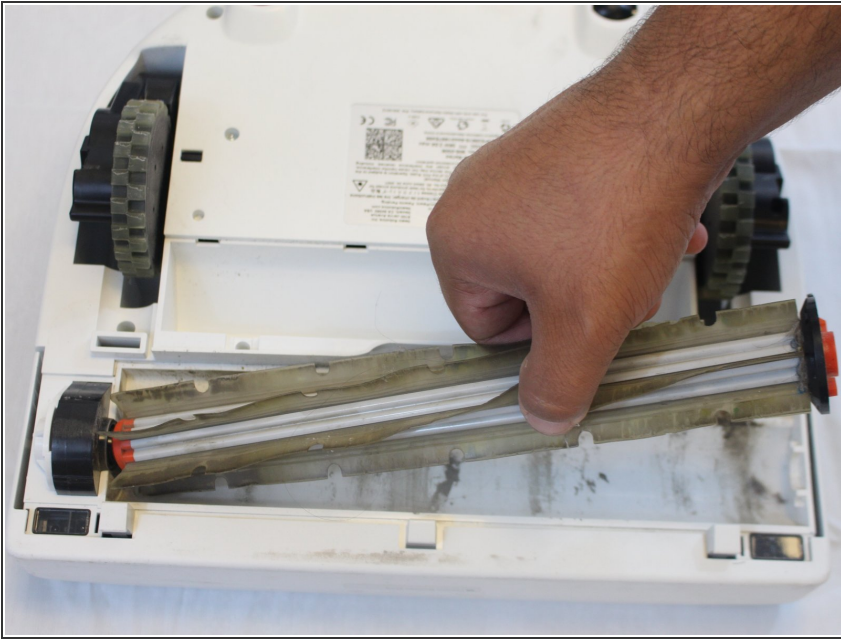
Step 2



- Once you have everything out get the plastic opening tool and pry open the large black plastic piece.
- With a little force it should come out.

✎ The boxes show you where the clips are that hold this piece

Step 3



- Once the black piece has been taken out, the brush just comes out easily.

To reassemble your device, follow these instructions in reverse order.