



Montiss Air bubble Massage Machine Fuse Replacement

Disassembling the product to reveal the fuse and subsequently replacing it.

Written By: Lisa Hoogeveen



INTRODUCTION

This electronic device has fallen into the water. This has caused the fuse to blow and the product to fail. In order to get the product working again, the fuse will be replaced.



TOOLS:

- [Phillips Head Screwdriver: Size PH1](#) (1)
 - [Slip Joint Pliers](#) (1)
 - [Soldering Iron](#) (1)
-

Step 1 — Fuse



- Place the product in front of you

Step 2



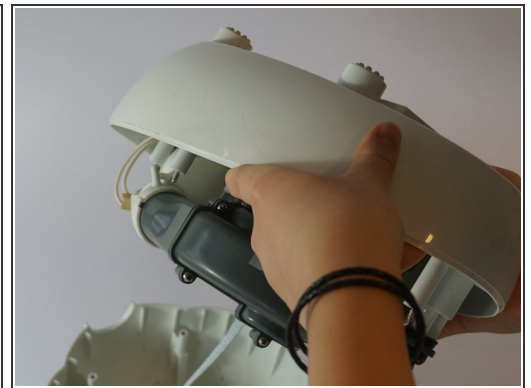
- Grab the tube, twist it and take it out.

Step 3



- Turn the product upside down, you will see five holes, in which the screws are located.

Step 4



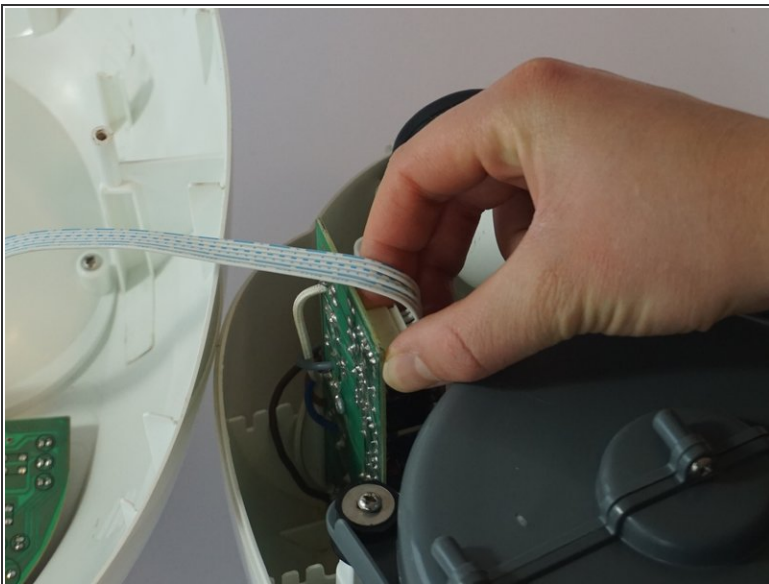
- Use a Phillips screwdriver to loosen the screws, then turn the product right side up to get the screws out of the casing.

Step 5



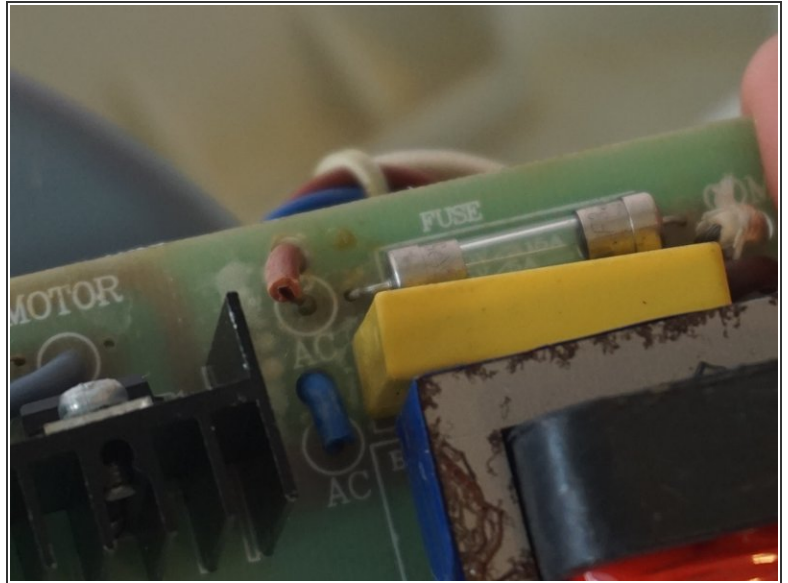
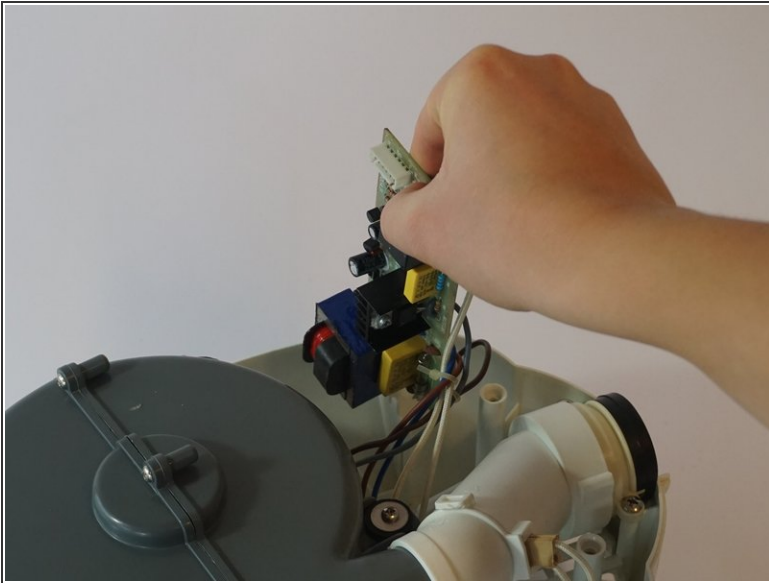
- Place the product on its feet and place the upper part of the casing next to the bottom part.

Step 6



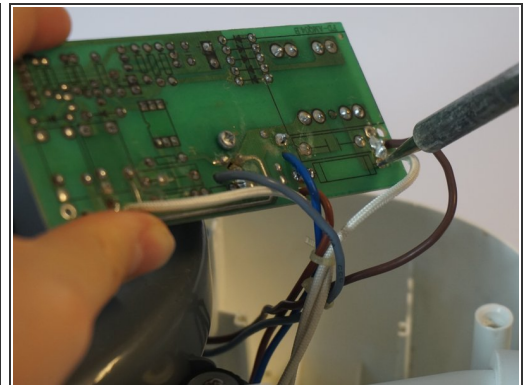
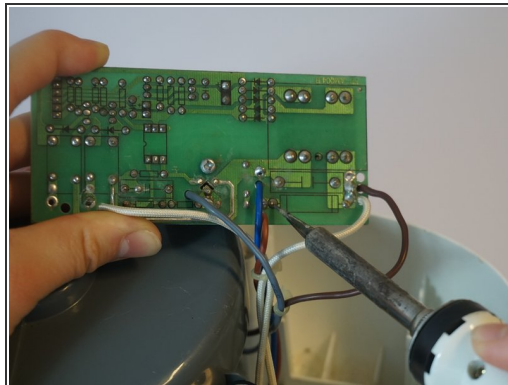
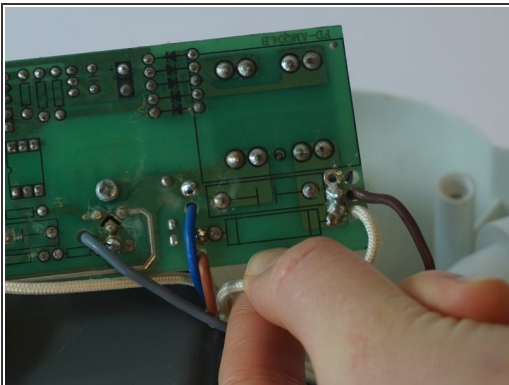
- An electronic wire is connecting the two PCB's. Take off the PCB in the lower part of the case by gently pulling the plastic housing, the connection will slowly loosen.

Step 7



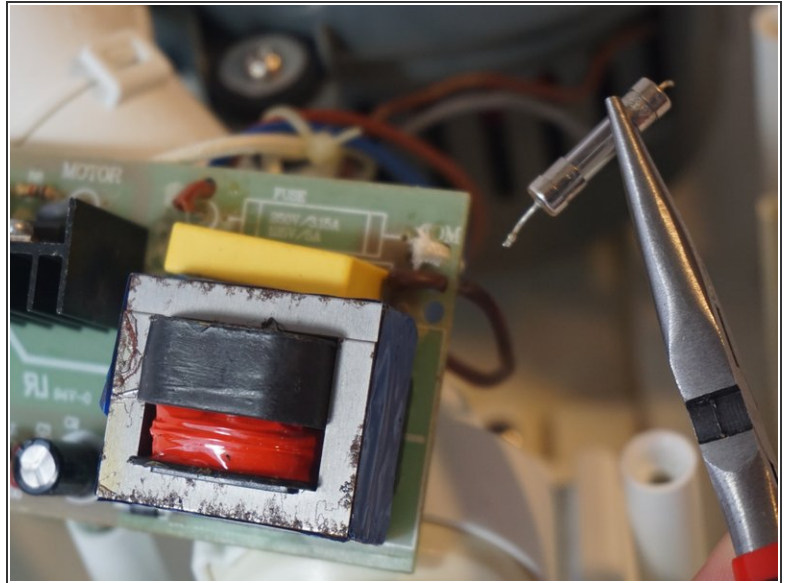
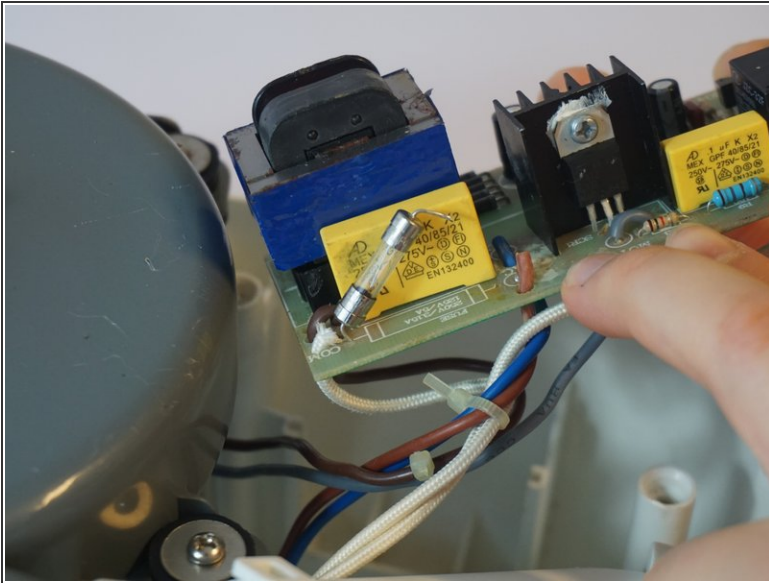
- Take the PCB out of the case. Here you can see the fuse you want to replace

Step 8



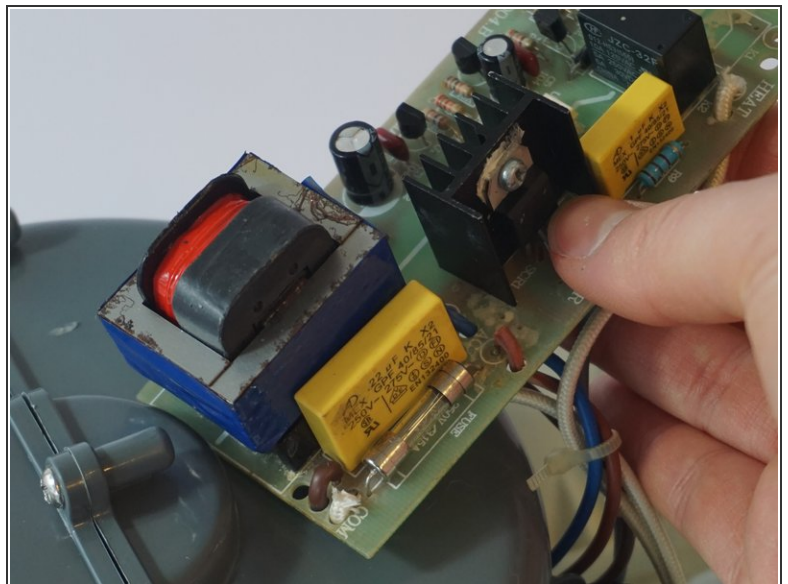
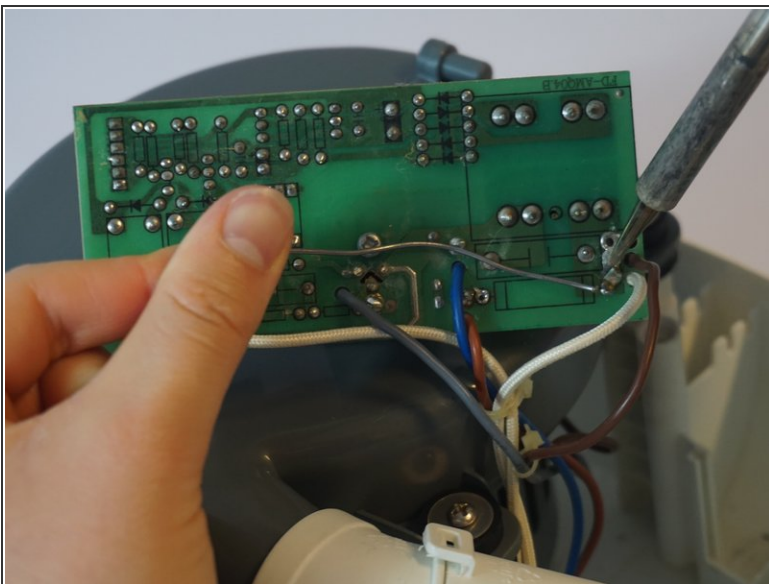
- Desolder the two spots connecting the fuse to the PCB. If you have never done this before, use [this guide](#) from iFixIt.

Step 9



- Take out the fuse with some pliers, since it will be hot because of the soldering.

Step 10



- Put in a new fuse and solder it back in place. Now you can reassemble the product.

To reassemble your device, follow these instructions in reverse order.