



# HTC OPM9200 Upper Logic Board

Prerequisite Only - This guide is for the removal of the upper logic board of the OPM9200.

Written By: Steve Gilland



---

# INTRODUCTION

Prerequisite guide used for tearing down device.

---




## TOOLS:

- [iFixit Opening Tools](#) (1)
  - [T4 Torx Screwdriver](#) (1)
  - [Phillips #00 Screwdriver](#) (1)
-

## Step 1 — Backplate Removal Prereq




 Before you proceed, discharge your device battery below 25%. A charged lithium-ion battery can catch fire and/or explode if accidentally punctured.

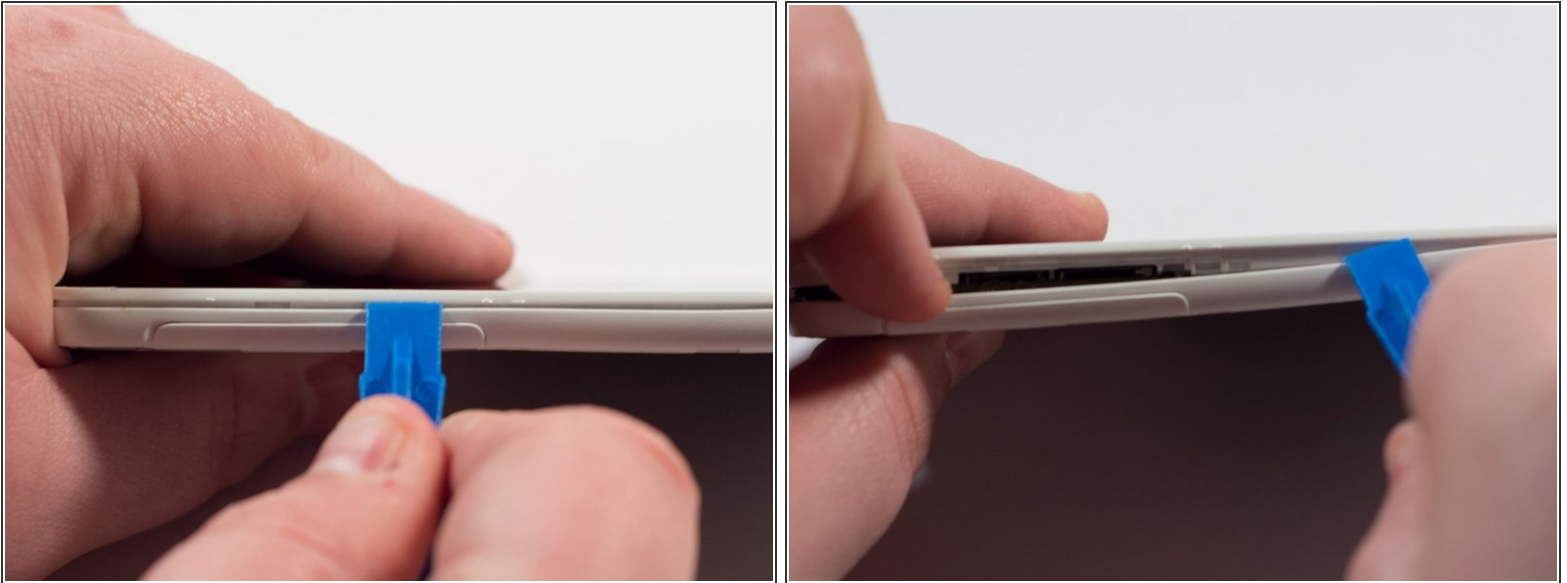
- Power off the device.
- Locate the SD Card/SIM Card cover flap on the left side of the device.
- Upon opening the cover flap you will find slots for SD Card and the SIM Card. Carefully remove these items if your device has them and set them aside.
- Lift on the back cover to begin the removal process. Continue removing the back cover by working along the edge. Once removed set aside the back cover.

## Step 2



- Remove the five 3.5mm T4 Torx Screws.
  - Remove the two 4.5mm #00 Phillips screws.
-  Please be aware of the sticker below the battery. Following this guide past this point may void your device's warranty.

## Step 3



- Place a plastic opening tool along the seam of the front plate and back plate. Run the opening tool along the seam while prying slightly in order to pop the plastic clips away from the front plate.
- Once one or two clips have popped away you may begin to use your free hand to apply additional pressure while continuing to apply prying pressure as well with the opening tool.
- ⓘ Apply constant but controlled pressure while separating the front from the back. Damage may occur if using excessive pressure while separating the plates along the seam.



## Step 4



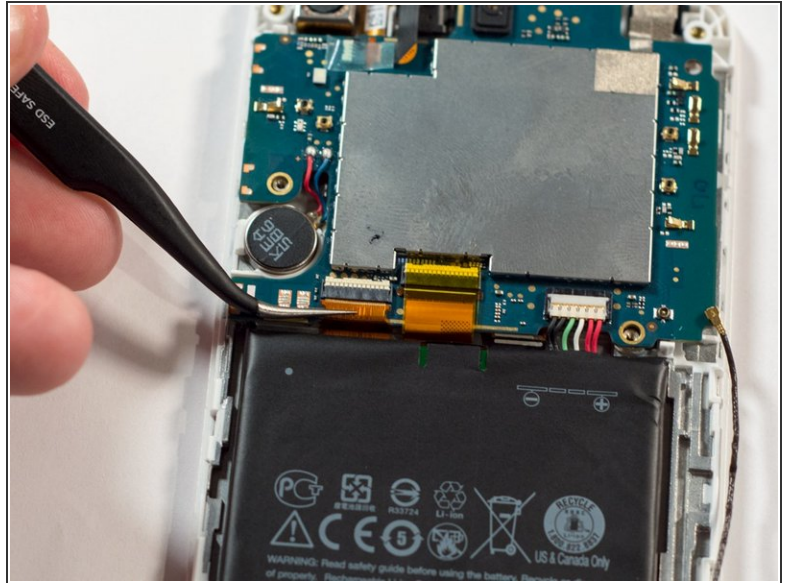
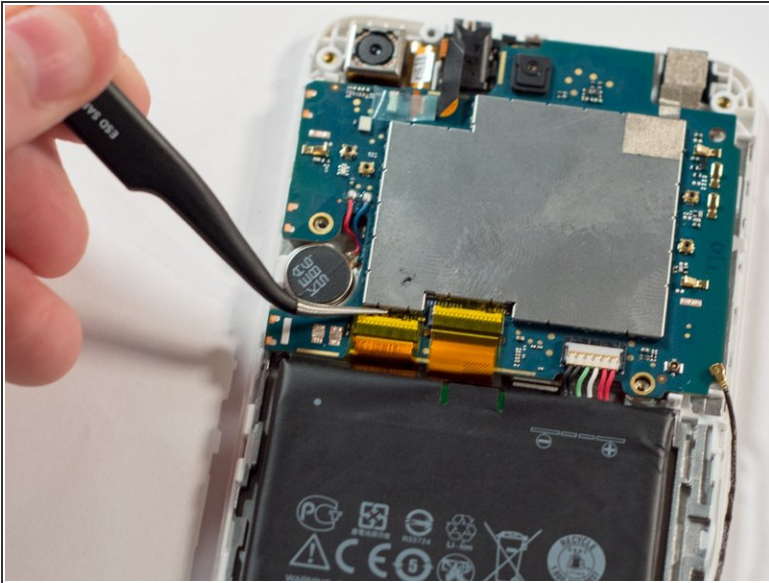
- Continue working your way around the seam between the two parts and eventually you will be able to separate the entirety of the backplate revealing the internals of the device.

## Step 5 — Upper Logic Board



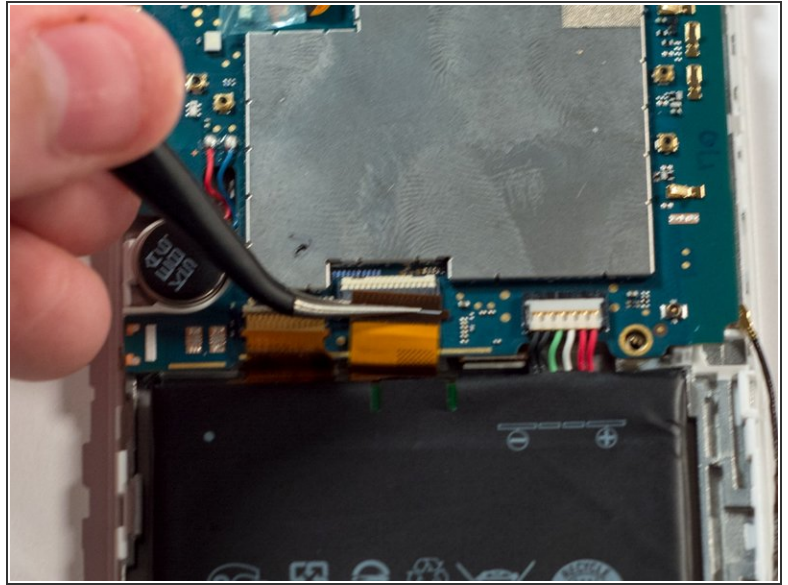
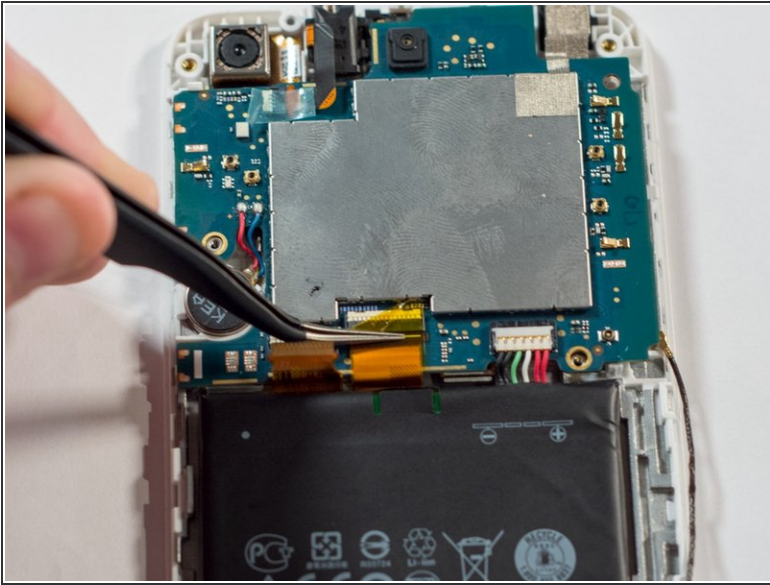
- Using the tweezers, remove the antenna connection. Grab the connector by the base and pull towards the head of the connector.

## Step 6



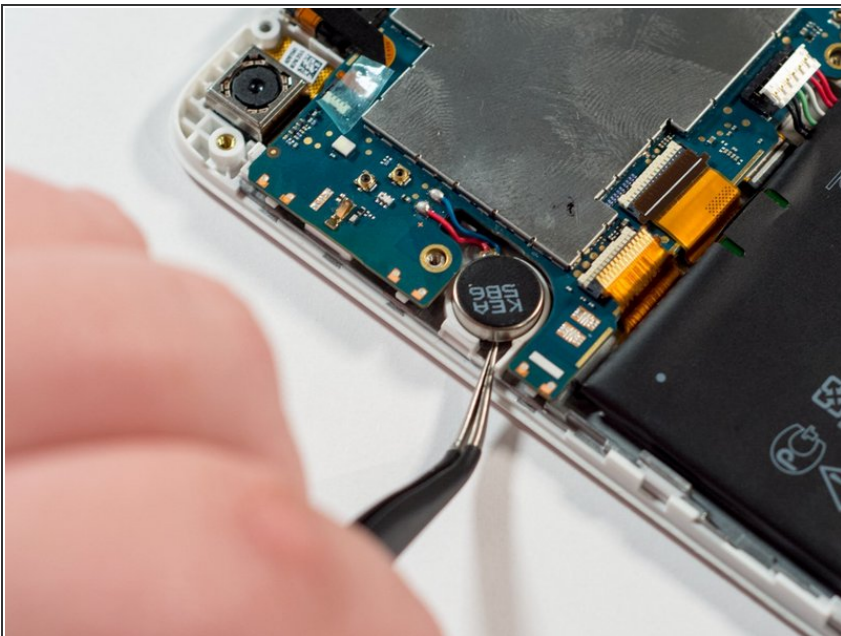
- Remove the tape that sits on top of the left connector.
- Place the tweezers around the ribbon cable and apply even pressure away from the connector to disconnect the cable.

## Step 7



- Remove the tape that sits on top of the right connector.
- Place the tweezers around the ribbon cable and apply even pressure away from the connector to disconnect the cable.

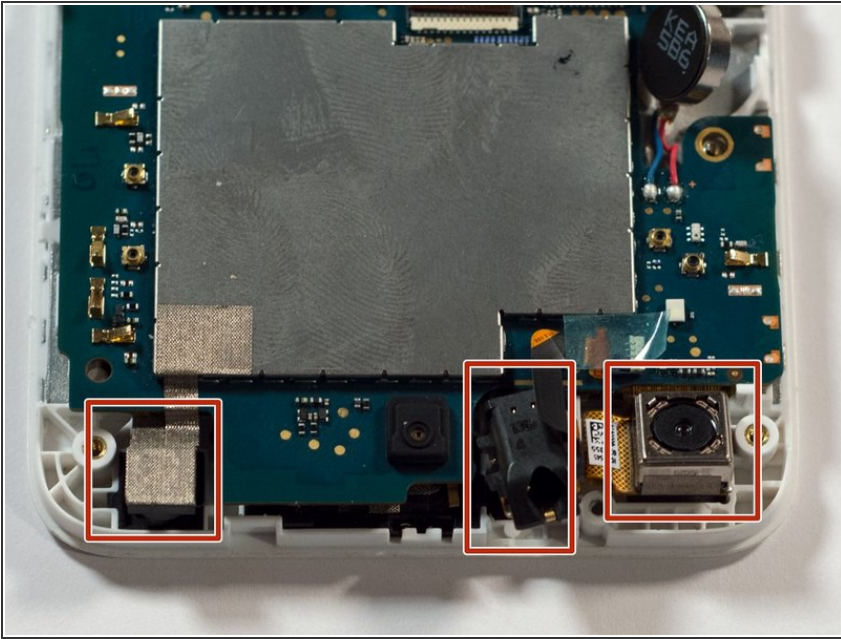
## Step 8



- Using the tweezers or another small pointed tool, place the tip under the edge of the round disk-like component on the left side of the device. Apply a small amount of pressure to the edge of the component to dislodge it.



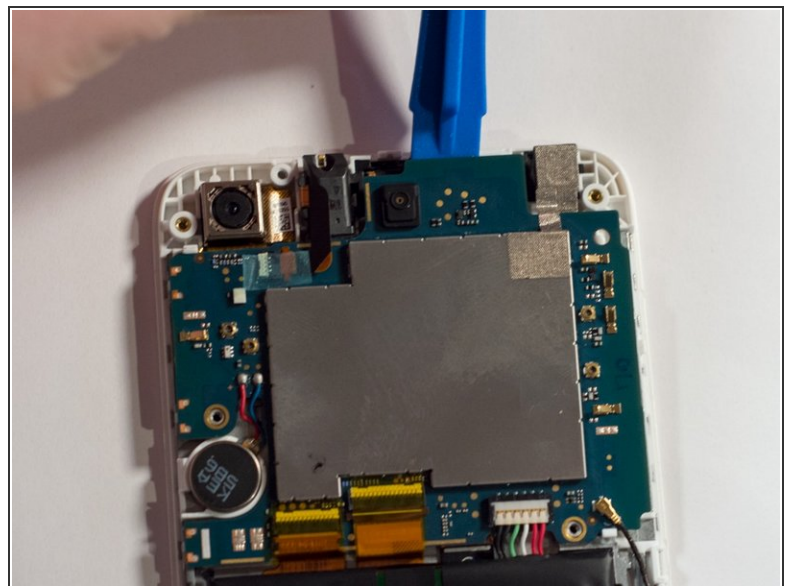
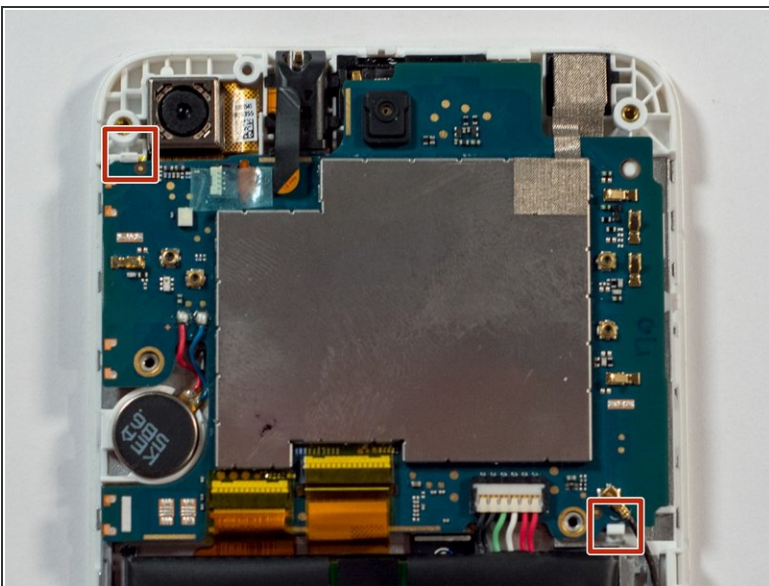
## Step 9



- Place the plastic opening tool along the edge of the components and lightly pry these components out of their slots.

⚠ Ensure that you don't damage these components. They should require little force to dislodge.

## Step 10



- Note the location of the plastic clips.
- Place the plastic opening tool along the top of the upper logic board. Apply even gentle pressure to remove the logic board from the rest of the device.

To reassemble your device, follow these instructions in reverse order.