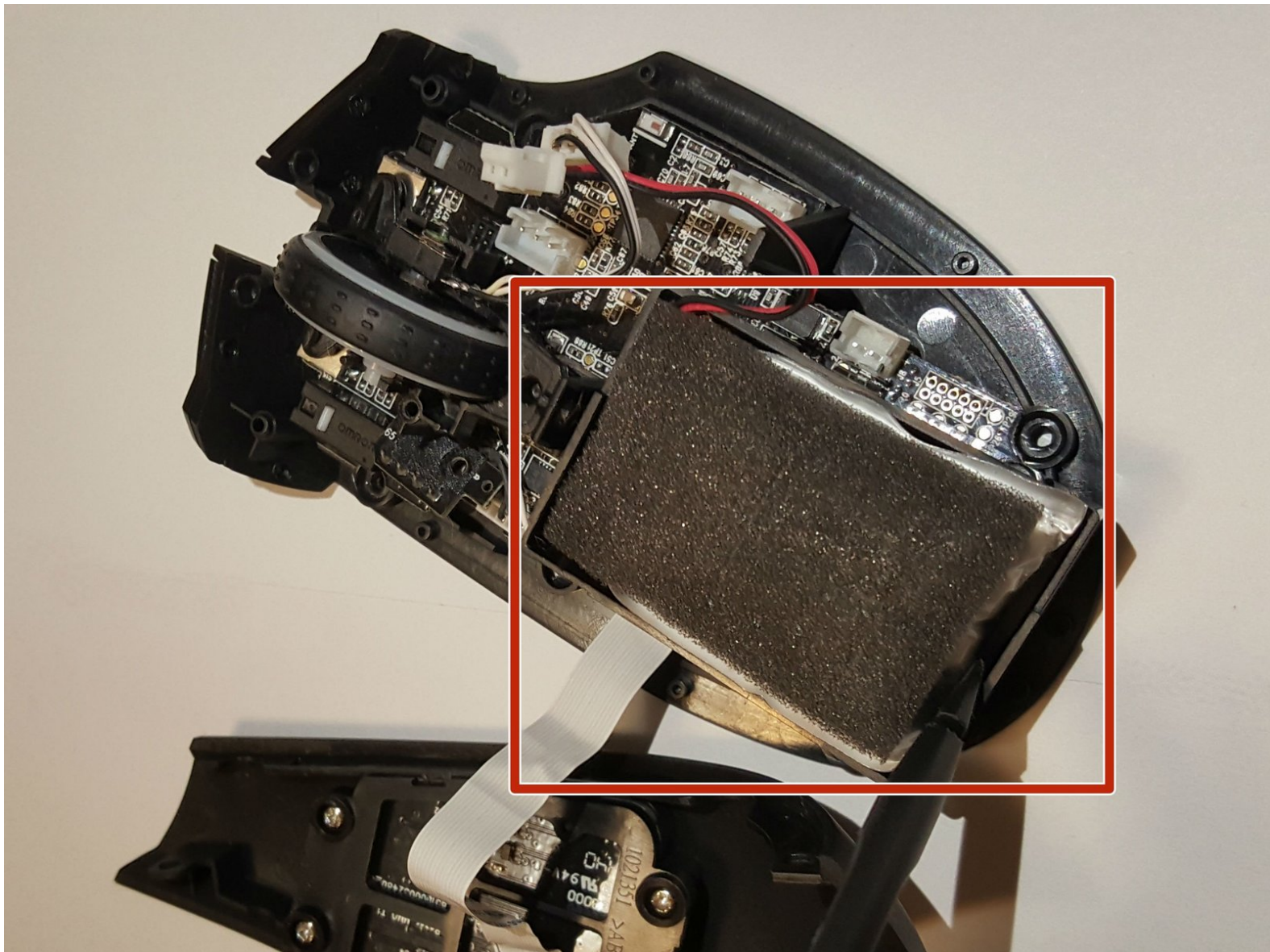




# Razer Naga Epic Chroma Battery Replacement

A simple guide on how to replace a faulty/dead battery in the Razer Naga Epic Chroma Mouse.

Written By: Jordan Morgan



## INTRODUCTION

If your Razer Naga Epic Chroma Mouse doesn't respond properly or continues to turn on and off at random times, it's likely due to a faulty battery.

Prior to this guide make sure to check the [troubleshooting guide](#) as other problems are caused by these issues as well. Be sure to check all the [Razer Naga Epic Chroma Guides](#) for more information related to troubleshooting your mouse.

A punctured battery can cause a dangerous fire. If your battery is swollen, take [appropriate precautions](#).



### TOOLS:

- [Phillips #00 Screwdriver](#) (1)
- [Spudger](#) (1)



### PARTS:

- [3.7V 1300mAh battery](#) (1)

## Step 1 — Razer Naga Epic Chroma Disassembly



- Using a spudger, remove the teflon tape on the bottom of the mouse to reveal four screws.

## Step 2



- Use a Phillips #00 screwdriver to remove the four screws.



## Step 3



- Gently pull on the top plastic plate of the device and carefully unplug the white cord from the circuit board.

⚠ When removing the chassis, carefully unplug the cord connecting to the top mouse buttons.

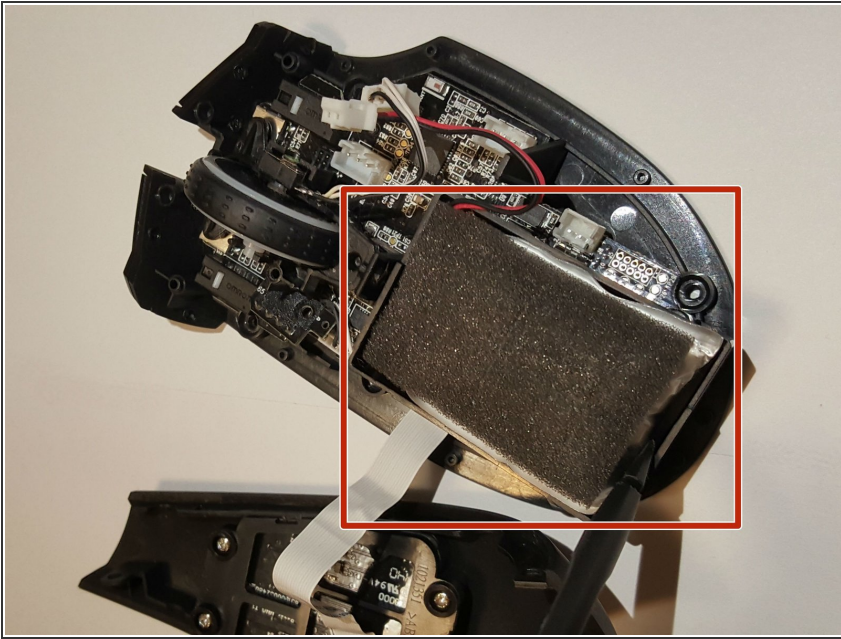
## Step 4



- Gently pull up on the right plate on the mouse; separating it.
- Carefully repeat this step for the left side.

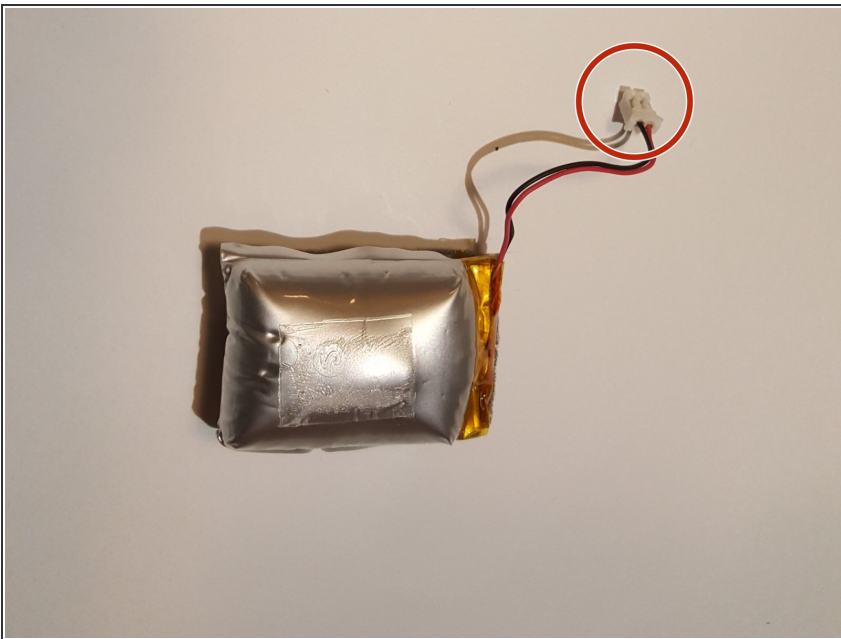
⚠ Be wary of the cable connecting to the twelve mouse buttons located on the left plate. This can be disconnected if needed.

## Step 5 — Battery



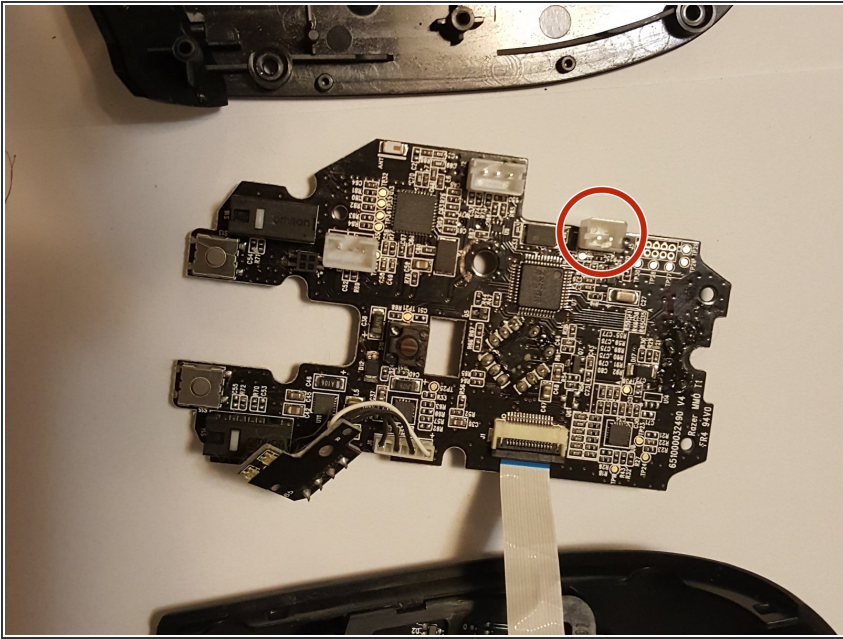
- Take your nylon spudger to gently pry the battery pack from the device.
- Remove the foam on the battery shell for your new battery.

## Step 6



- Unplug the power cord from the circuit board in the mouse.

## Step 7



- Plug the cord of the new battery into the socket found in the bottom right of the circuit board.
- Insert the new battery into the battery socket.
- Place the foam on the surface of the new battery (reference Step 5).

To reassemble your device, follow these instructions in reverse order.