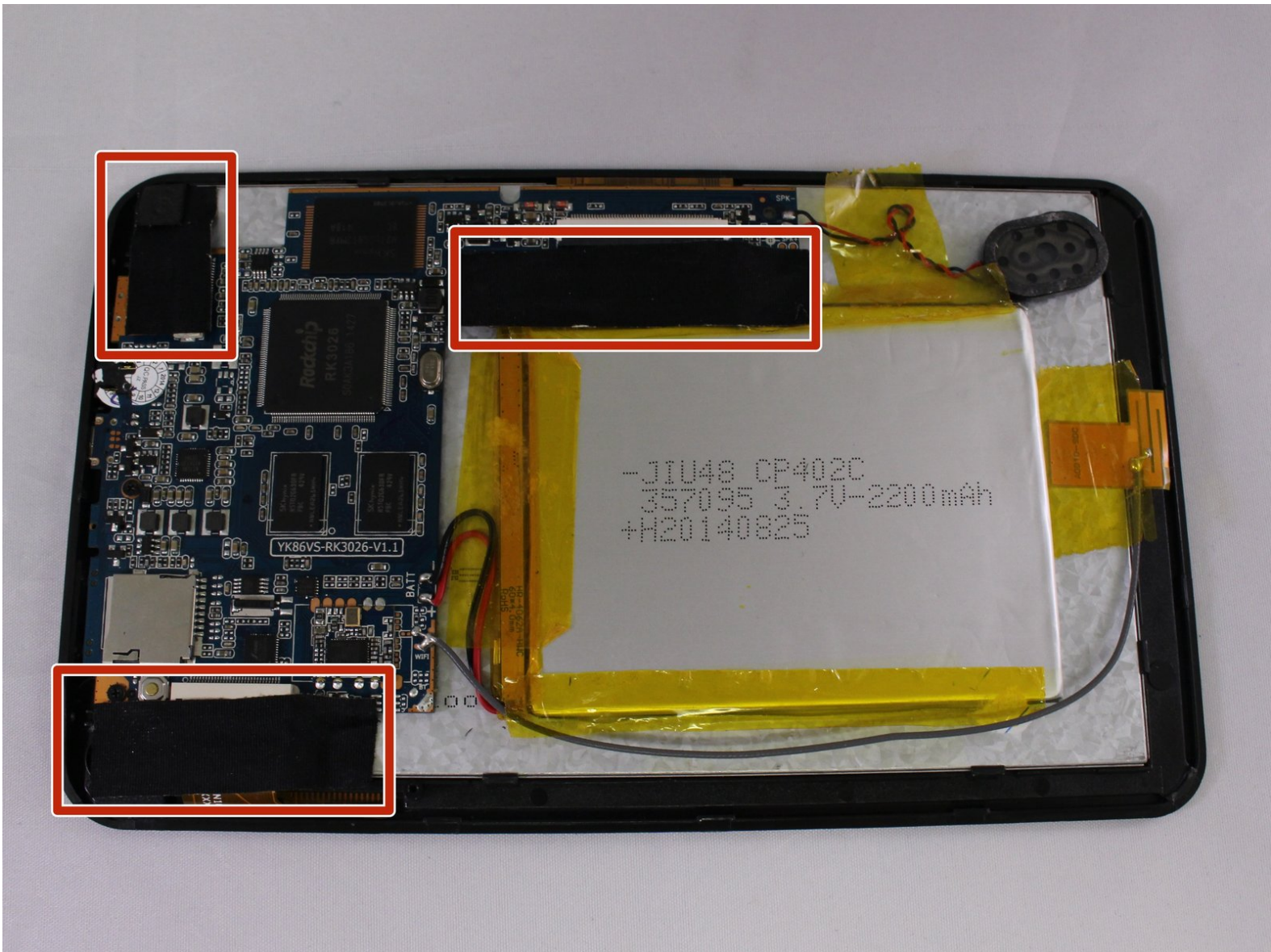




ProScan PLT7050 Motherboard Replacement

Is your device having issues processing or turning on? Use this guide to replace the motherboard.

Written By: Valerie Landguth



INTRODUCTION

This is the motherboard replacement guide. If you have found that there are issues with the motherboard, use this replacement guide

TOOLS:

- [iFixit Opening Tools](#) (1)
 - [Soldering Iron](#) (1)
 - [Phillips #00 Screwdriver](#) (1)
-

Step 1 — Open Device



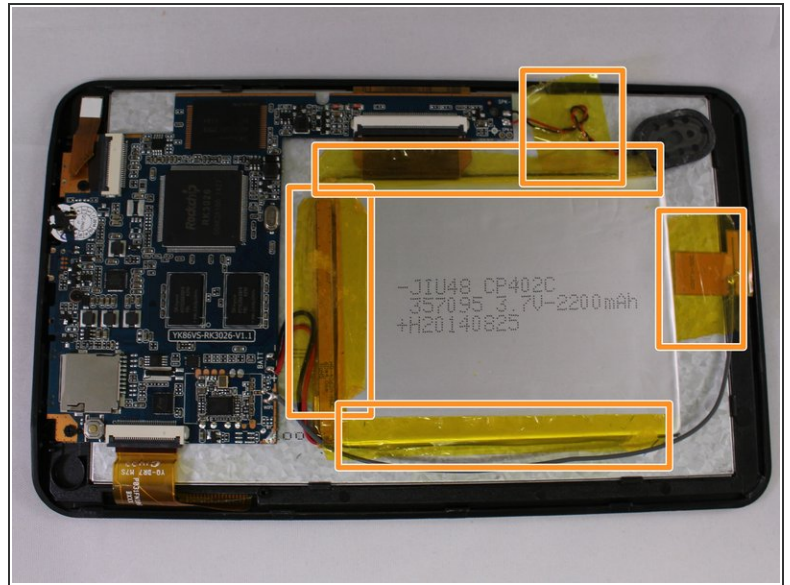
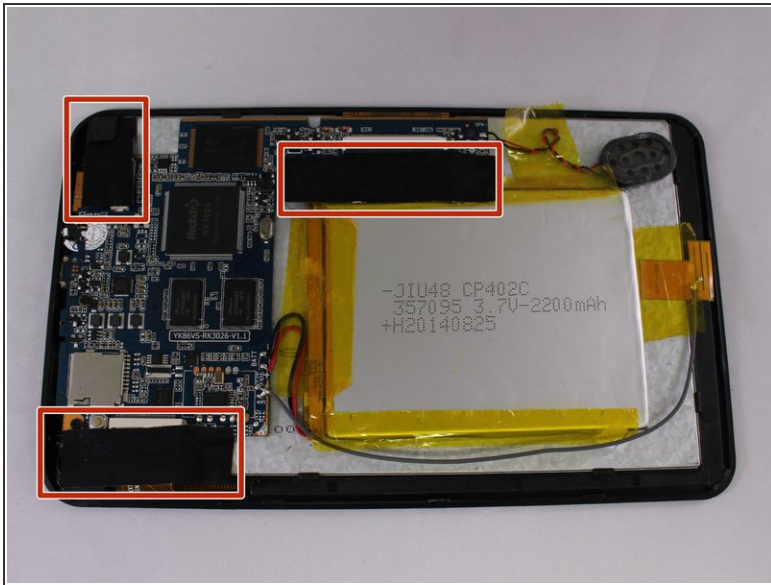
- Make sure device is unplugged and turned off while working on the device.
- Remove 2 Phillips head, 4.3 mm screws from the bottom side of the tablet with a PH00 screwdriver.

Step 2



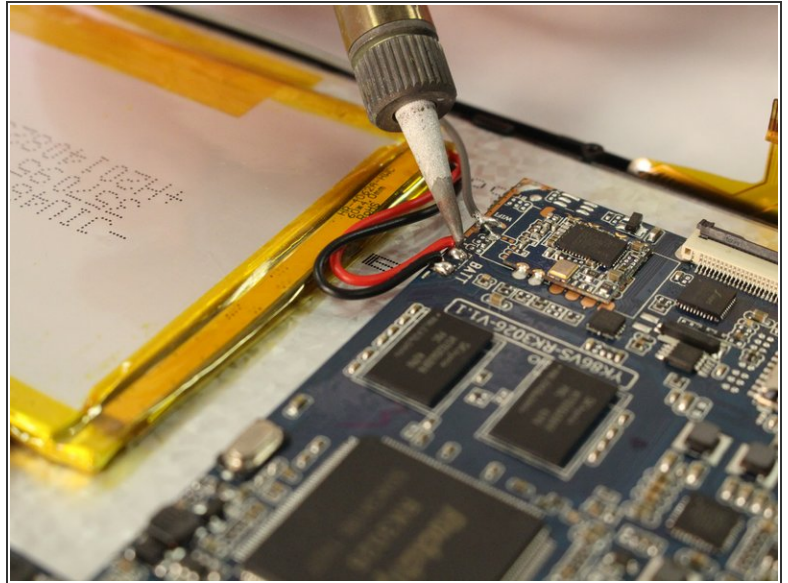
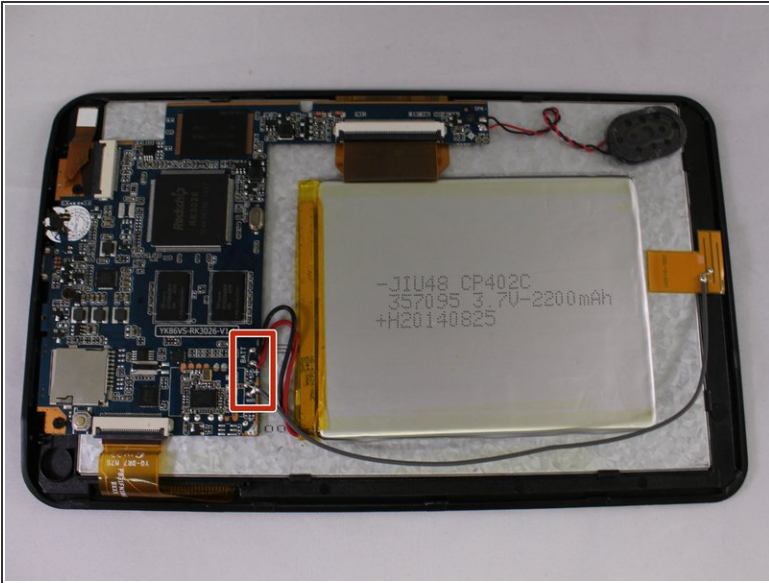
- Use the plastic opening tools to pry the back of the tablet open.
 - You may need to slide the tool along the sides of the device to get it to open. You might hear some popping noises, it is okay.
- i** May be helpful if you start by the microSD slot.

Step 3 — Motherboard



- Remove the 3 black pieces of tape from the device.
- Remove the 5 yellow pieces of tape from the device.

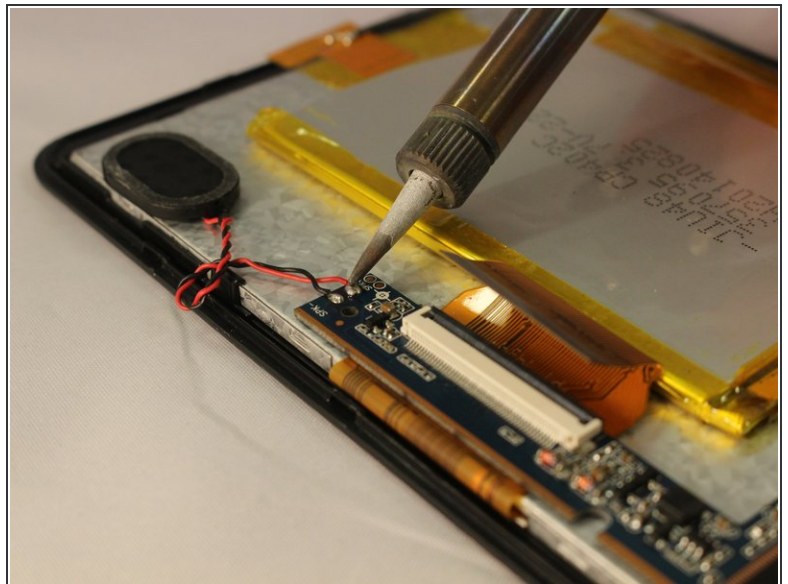
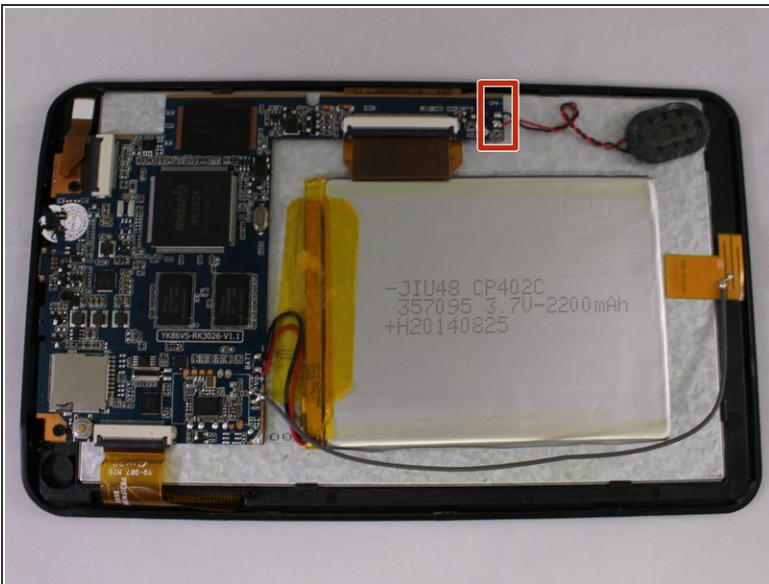
Step 4



- Use the soldering tool to remove the 3 wires from the mother board to the battery (black, red, gray).

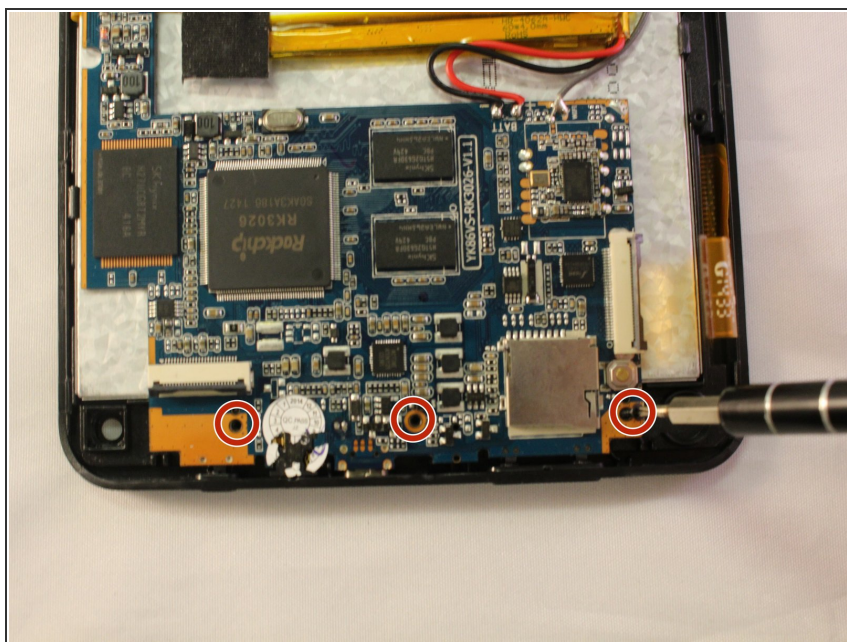
⚠ Soldering tool will get hot.

Step 5



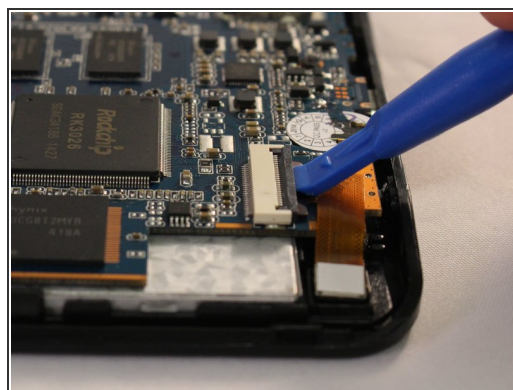
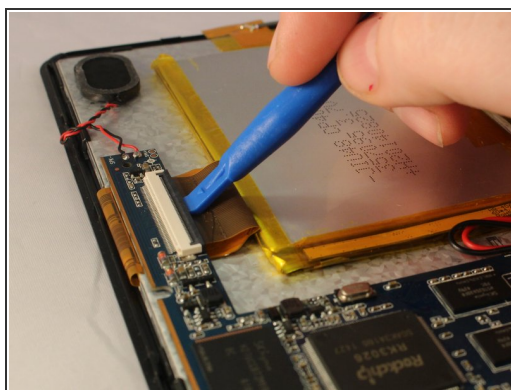
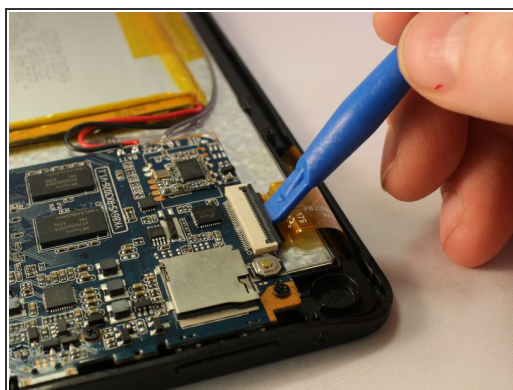
- Remove the speaker wires from the motherboard with the soldering tool.

Step 6



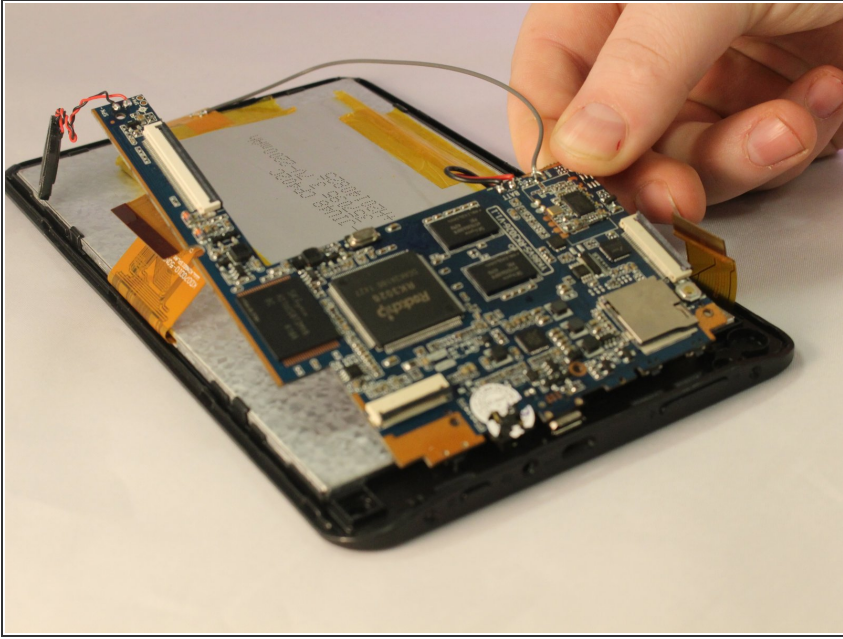
- Remove 3 Phillips head, 4.3 mm screws from the bottom side of the tablet with a PH00 screwdriver.

Step 7



- Use the plastic opening tool to pop open all 3 ZIF connector tabs connected to the motherboard.
- Remove each ribbon from the ZIF connector port.

Step 8



- Lift the motherboard off the device taking care to pull the ports out of the casing.

To reassemble your device, follow these instructions in reverse order.