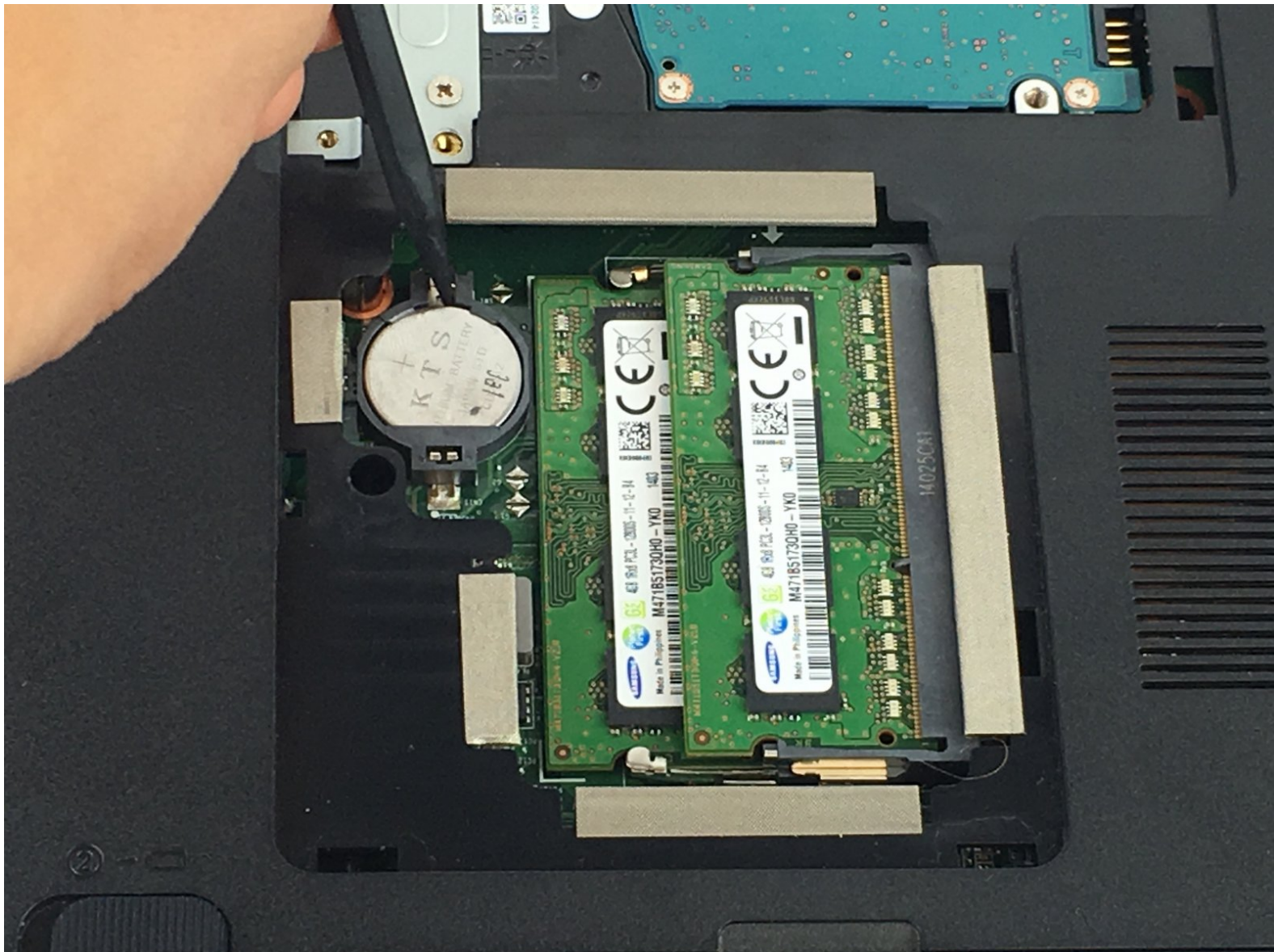




Toshiba Satellite C75D-A7370 CMOS Battery Replacement

This guide will help locate and replace the CMOS battery for Toshiba Satellite C75D-A7370.

Written By: Basim Ismail



INTRODUCTION

This guide helps the user Replace the CMOS battery. the CMOS battery is responsible for the Laptop's clock.




TOOLS:

- [Phillips #1 Screwdriver](#) (1)
 - [Spudger](#) (1)
-

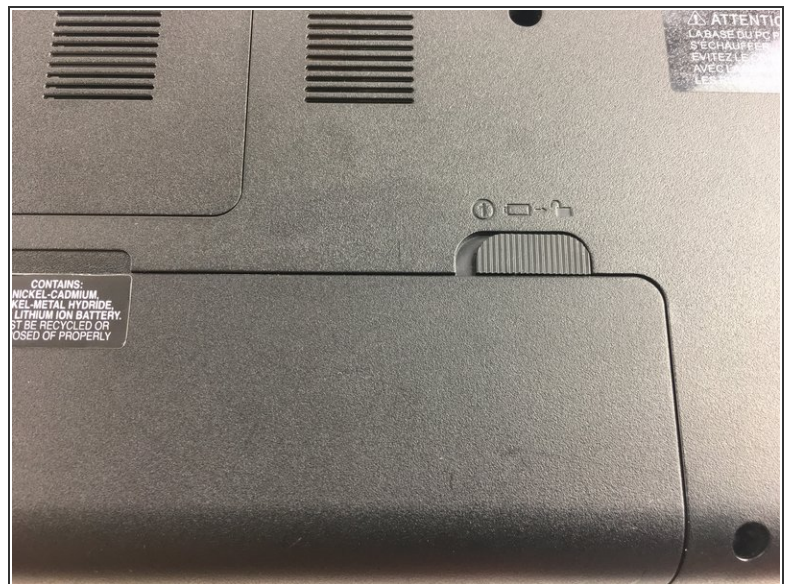
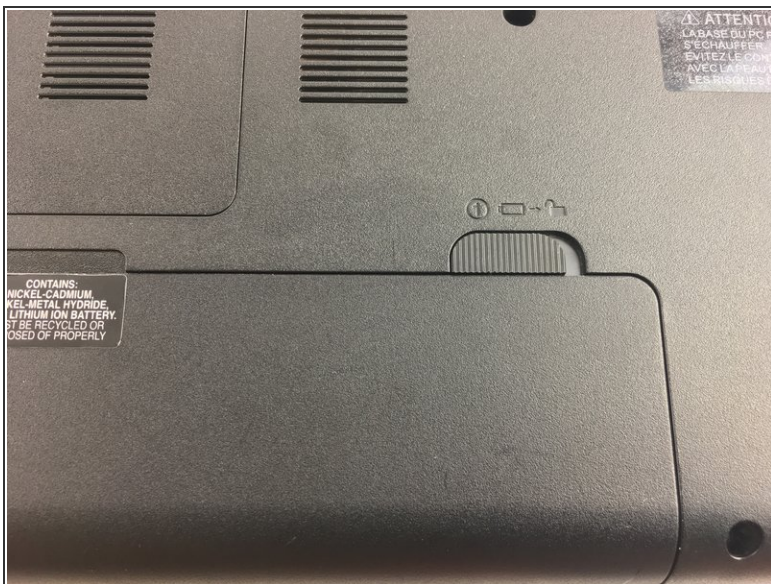
Step 1 — Battery



- To begin replacing your battery, flip the laptop over so that the back is visible. Locate the battery at the bottom center of the laptop.

 Before beginning battery removal, make sure that no power source is connected to the laptop. This will avoid electrical shock.

Step 2



- On the right side of the battery there will be a locking switch. Slide the switch into the unlocked position.

Step 3



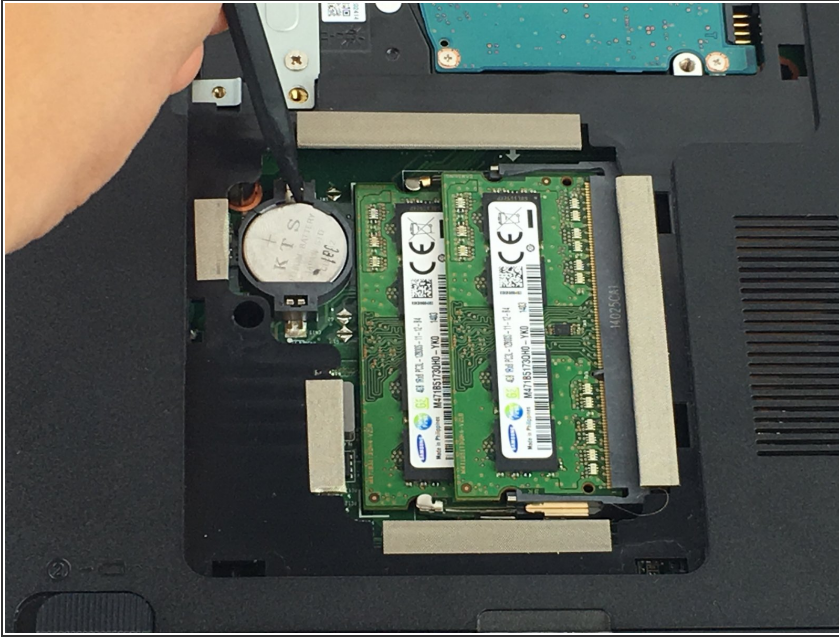
- Using your left hand, move the switch on the left side of the battery towards the center of the laptop while simultaneously prying up on the center of the battery with a spudger. The battery will flip out and can be removed.

Step 4 — Back Access Panel



- Remove the 7mm screw near the center of the back of the laptop with a P1 screwdriver and pry off the access panel with a nylon spudger.

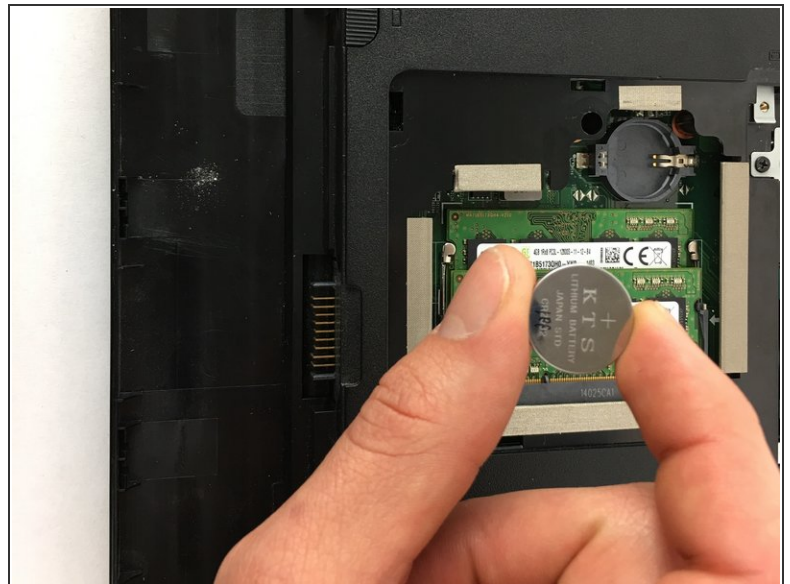
Step 5 — CMOS Battery



- Locate the CMOS battery.

⚠ Before handling internal components, please remember to properly ground yourself using an ESD strap to prevent electrical damage to sensitive components.

Step 6



- Then using a spudger, try to get under the battery and the battery will pop out of place. You are now ready to replace the CMOS battery.

To reassemble your device, follow these instructions in reverse order.

This document was generated on 2020-11-28 05:39:52 AM (MST).

