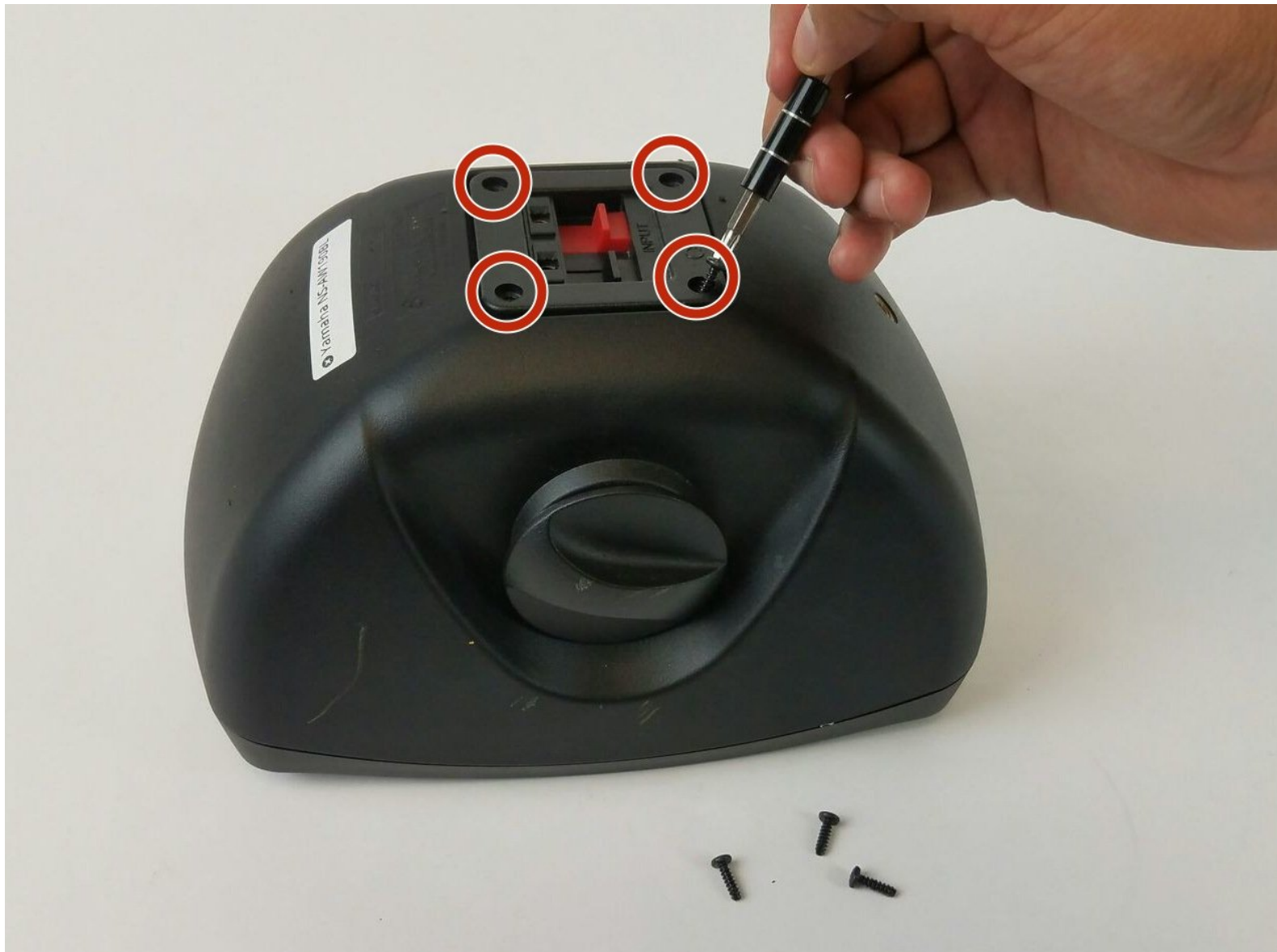




Yamaha NS-AW190BL Input/Output Panel Replacement

Use this guide to replace the input/output panel.

Written By: bradley



INTRODUCTION

This guide will walk you through the process of replacing the input/output panel.

TOOLS:

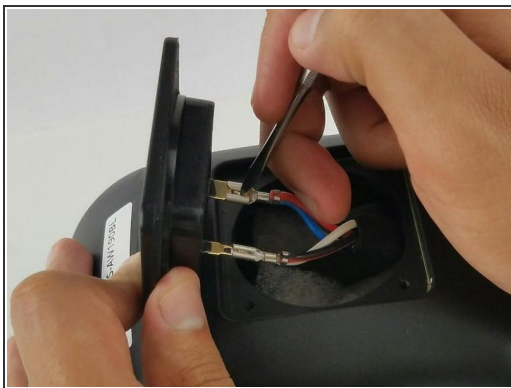
- [Pro Tech Toolkit](#) (1)
-

Step 1 — Input/Output Panel



- Remove all four .5 mm Phillips head screws located on the back panel of the device.
- Pull out the input/output panel from the back of the device once all four screws are removed.

Step 2



- Gently push down on the tab holding the connectors together.
- Repeat the process on the second connector. (Even though they appear different, they are held together using the same tabs.)
- Remove both connectors to free the input/output panel.

To reassemble your device, follow these instructions in reverse order.