



# HP 15-d076nr Fan Replacement

This guide details how to replace the fan on an HP 15-d076nr. If your laptop overheats or is producing unusual noise, this may be the guide for you.

Written By: Mohiuddin Baig



## INTRODUCTION

This guide details how to replace the fan on an HP 15-d076nr. If your laptop overheats or is producing unusual noise, this may be the guide for you.



### TOOLS:

- [Phillips #0 Screwdriver](#) (1)
- [Phillips #1 Screwdriver](#) (1)
- [Spudger](#) (1)



### PARTS:

- [HP Fan And Heatsink Assembly](#) (1)  
Fan and Heatsink  
Part # 747266-001

## Step 1 — Battery



- Orient the laptop upside down so that the back of the laptop, where the battery is located, faces you.
- Locate the left and right switches at the bottom of the laptop.

## Step 2



- Move the right switch to the left so that the orange unlock symbol is showing.



### Step 3



- Move the left switch to the right, covering the battery symbol, and hold.

### Step 4



- While holding the left switch in place, slide the battery towards you and away from the laptop.

## Step 5 — Wireless Card



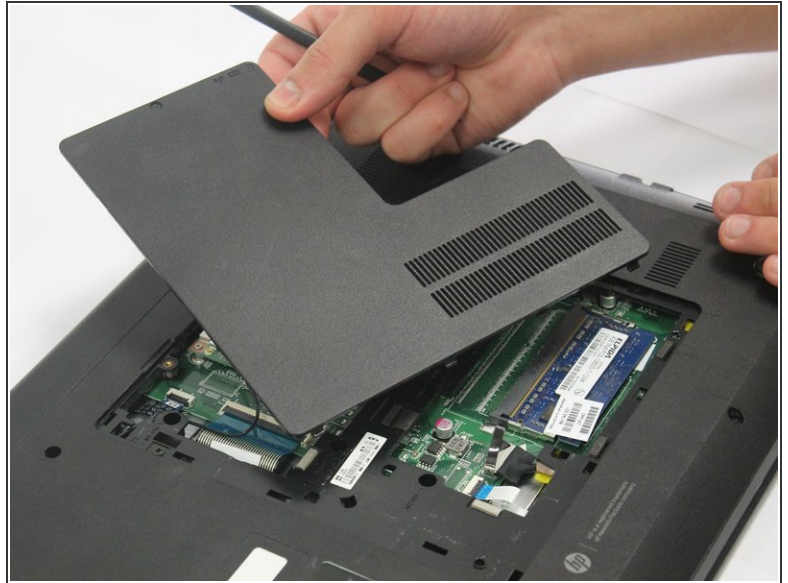
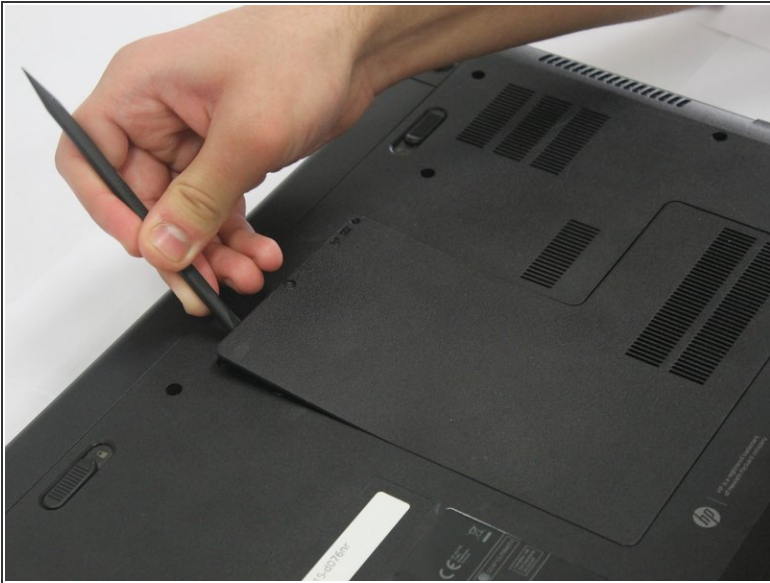
- Re-orient the laptop, so that the back of the laptop faces away from you.

## Step 6



- Locate the small screw on the panel at the center of the laptop.
- Loosen the small screw using a Philips # 1 screwdriver.
- ⓘ The screw does not come free from the panel. It only needs to be loosened enough so that the panel can be lifted/pried.

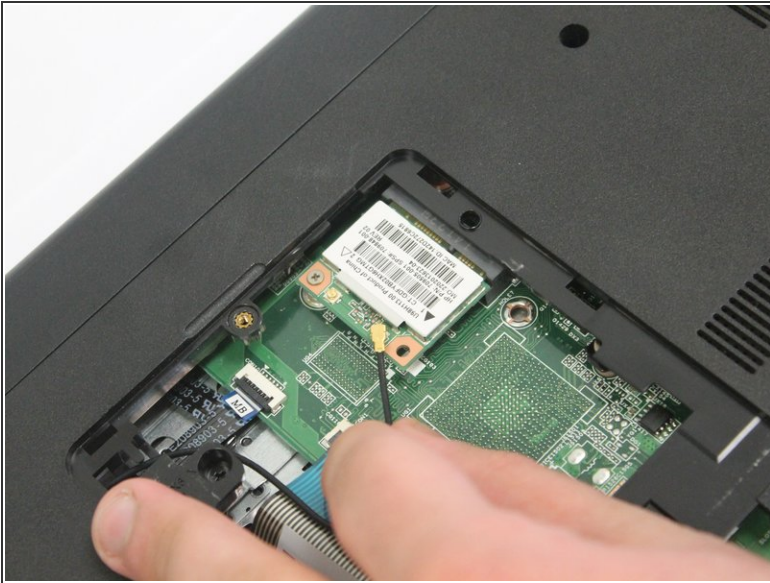
## Step 7



- Carefully pry the middle panel up using a plastic spudger, or other prying tool .
- Pull the panel away from the laptop and set it off to the side.

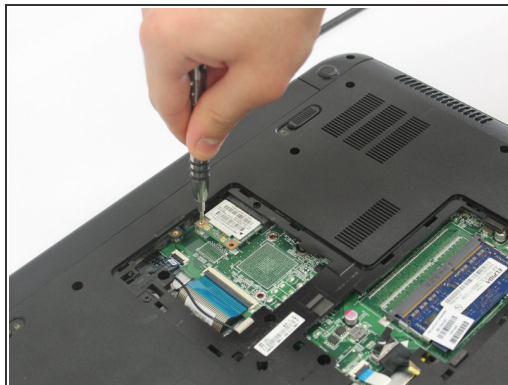


## Step 8



- Gently wiggle and lift the black antenna wire away from the wireless card.
- i** If there is also a white wire attached, both black and white wires will need to be removed from the wireless card.

## Step 9



- Locate the Phillips 2.0x3.0mm screw on the upper left corner of the wireless card.
- Carefully remove the 2.0x3.0mm screw using a Philips #0 screwdriver.

## Step 10



- Slide the wireless card to the left to remove it from the socket.

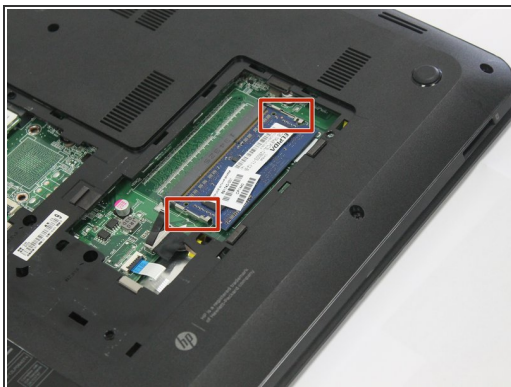
## Step 11 — Motherboard



- Locate the RAM in the exposed area.



## Step 12



- Locate the latches on the RAM.
- Slide the latches away from the RAM using a plastic spudger.
- ⓘ The RAM might spring out.

## Step 13



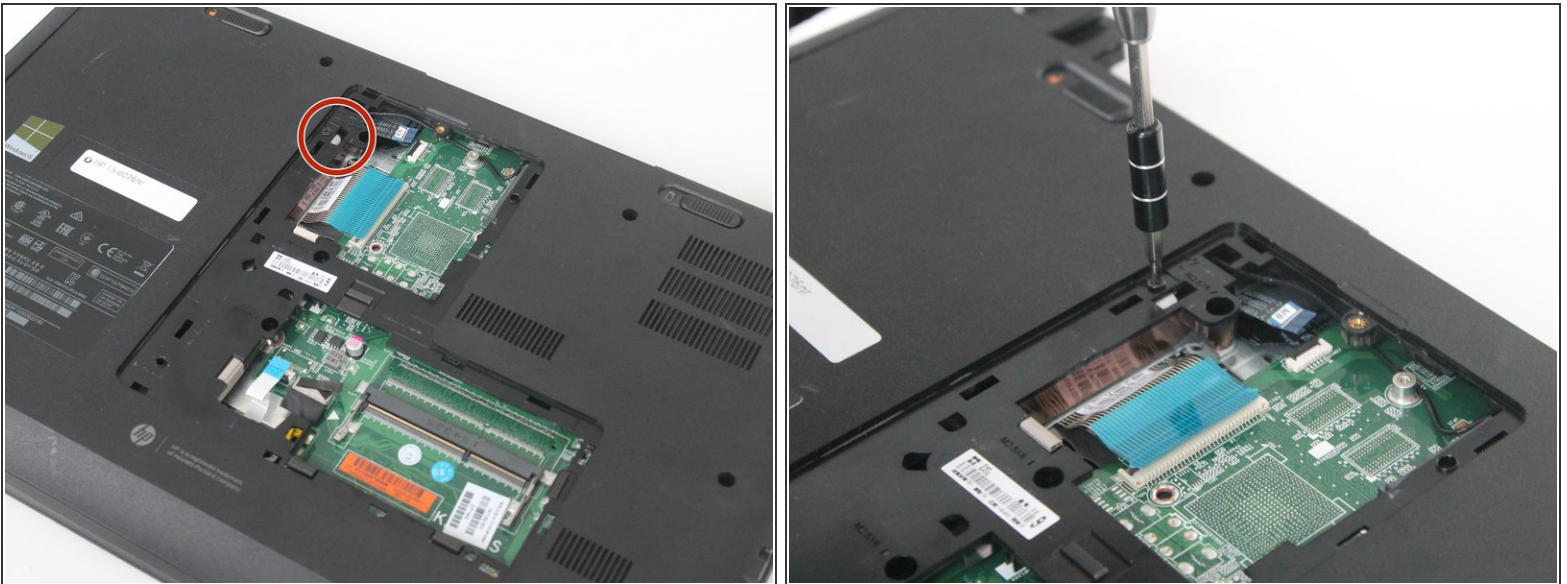
- Remove the RAM.

## Step 14



- Locate the ribbon cables.
- Pry up the black tabs on the connectors and disconnect both of the ribbon cables.

## Step 15



- Locate the DVD drive screw.
- Remove the Phillips PM2.5×6.5 screw using a Phillips #0 screwdriver.
- i* Continue using a Phillips #0 screwdriver for the rest of this guide, and subsequent guides.
- i* Take the screw and place it in a container so as to not lose it.



## Step 16



- Push down the tab that is located by the DVD drive screw.
- Take the DVD drive in one hand, and using the plastic spludger, push the tab down, and out.

## Step 17



- Remove the fourteen Phillips PM2.5×6.0 screws, and place them in a separate container.



## Step 18



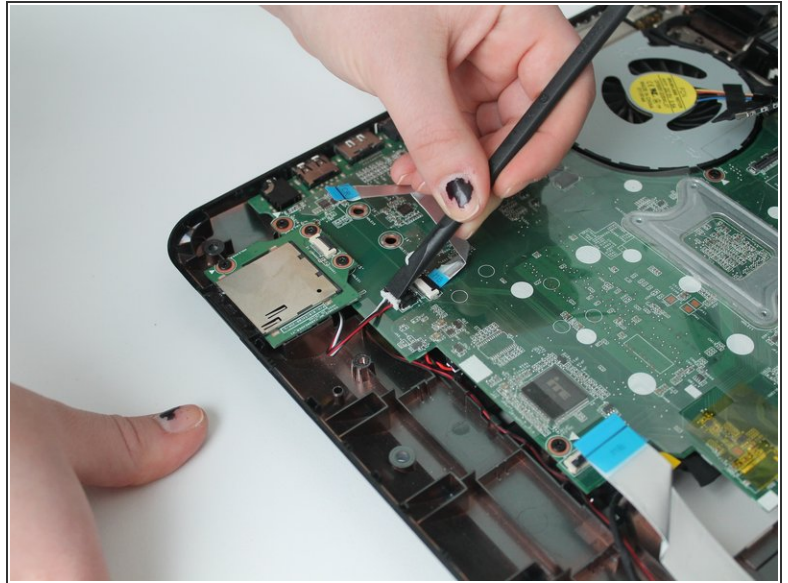
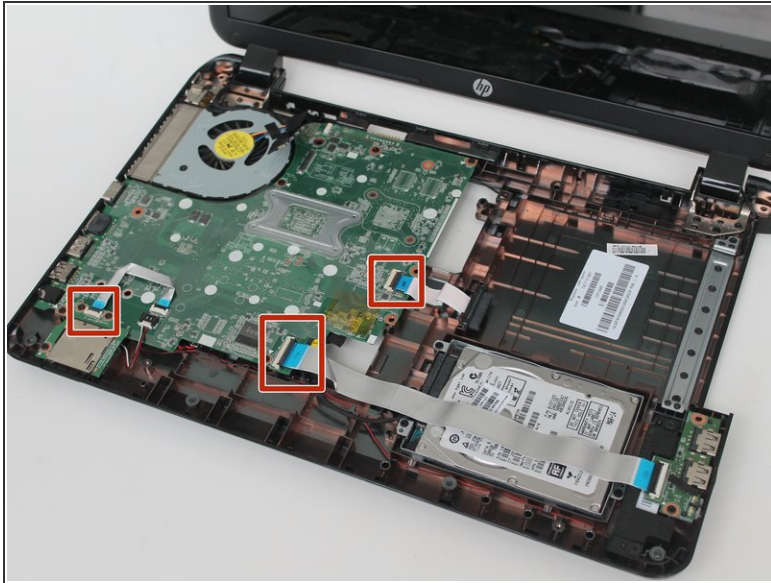
- Flip the laptop over, and open it as if you were using it.
- Gently, remove the laptop cover/keyboard from the laptop using the plastic spudger.
- ⓘ When you remove the cover/keyboard, the laptop will become top heavy.

## Step 19



- Disconnect the monitor cable, using the plastic spudger, and pry it upwards.
- Pull the cable from its routing until it is free.

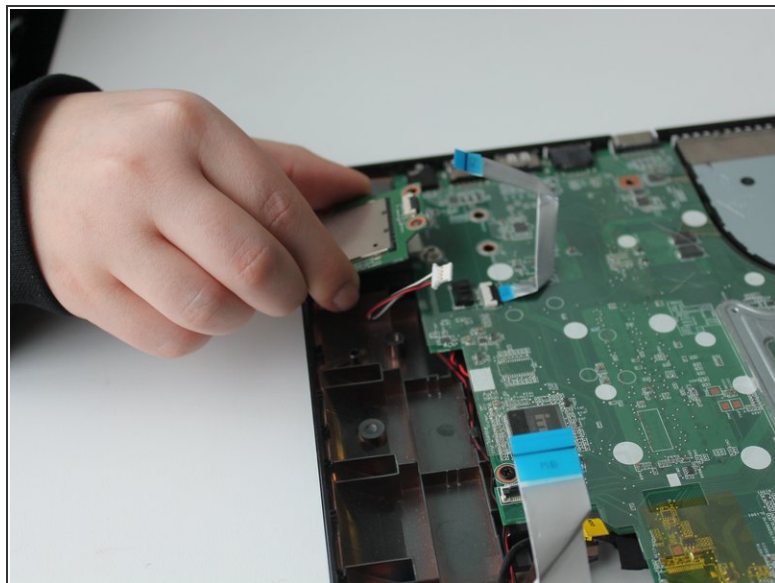
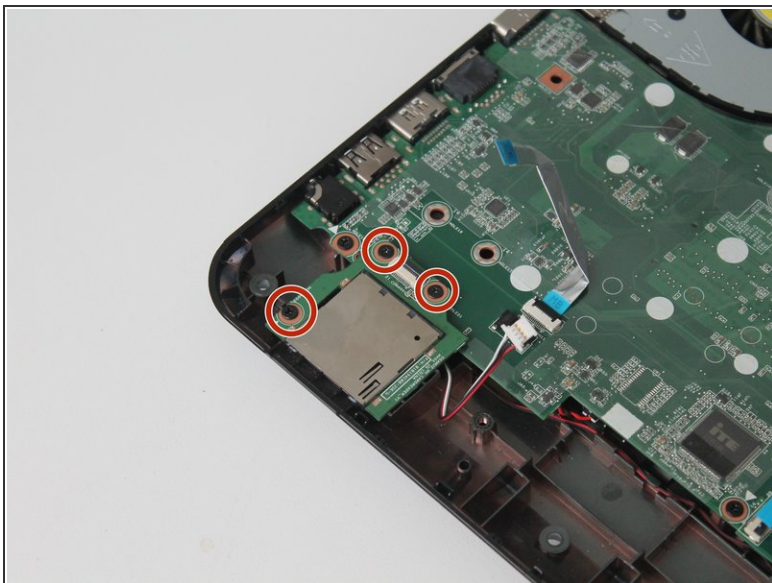
## Step 20



- Lift the black tabs, and disconnect the three ribbon cables.
- Disconnect the red-black-white speaker cable located in the lower left corner.

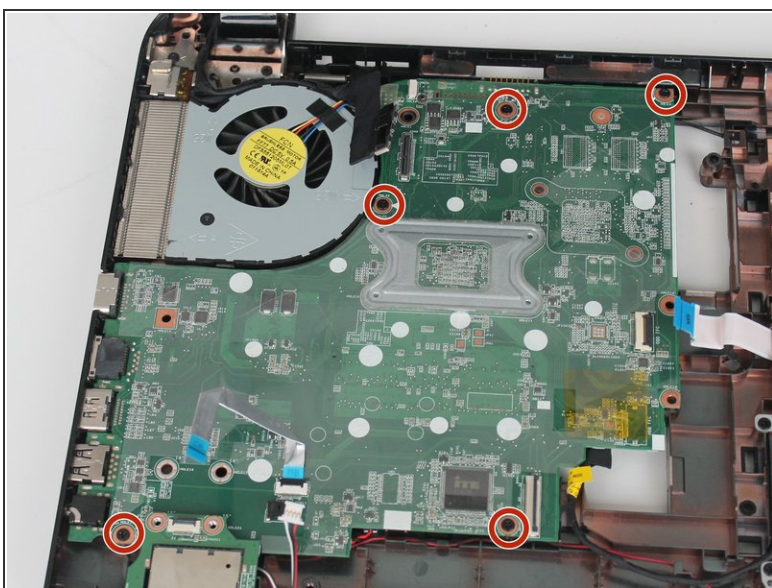


## Step 21



- Remove the three Phillips PM2.5×4.0 screws on the card reader in the bottom left corner.
- Place the screws in a separate container.
- Remove the card reader.

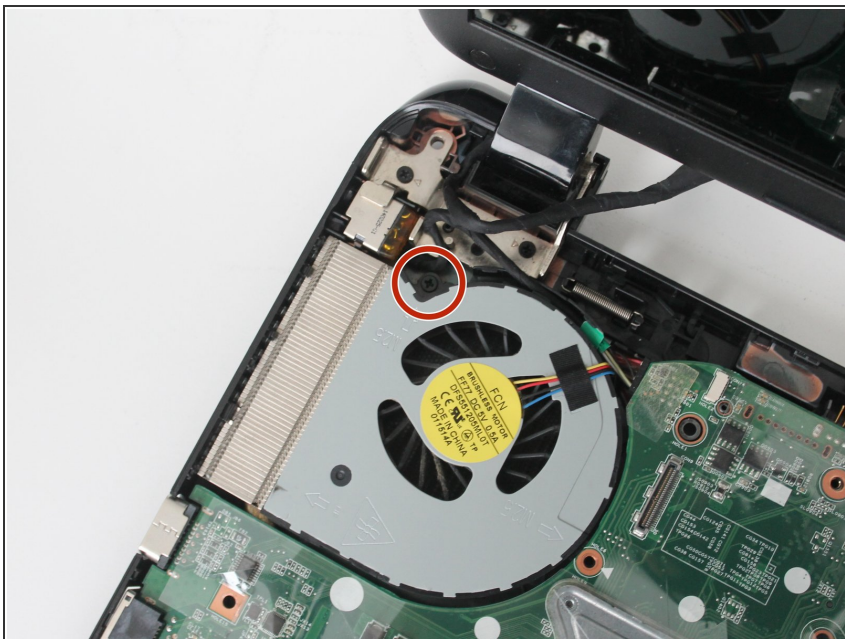
## Step 22



- Remove the five Phillips PM2.5×5.0 screws on the motherboard.

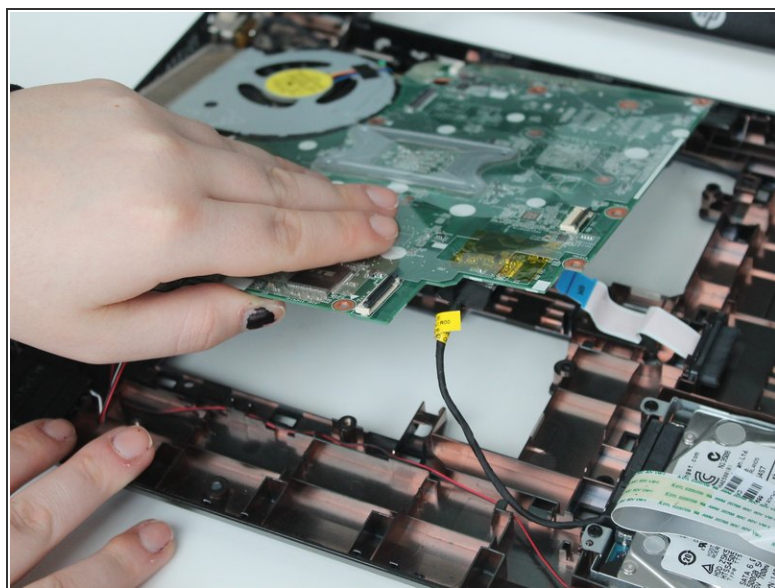
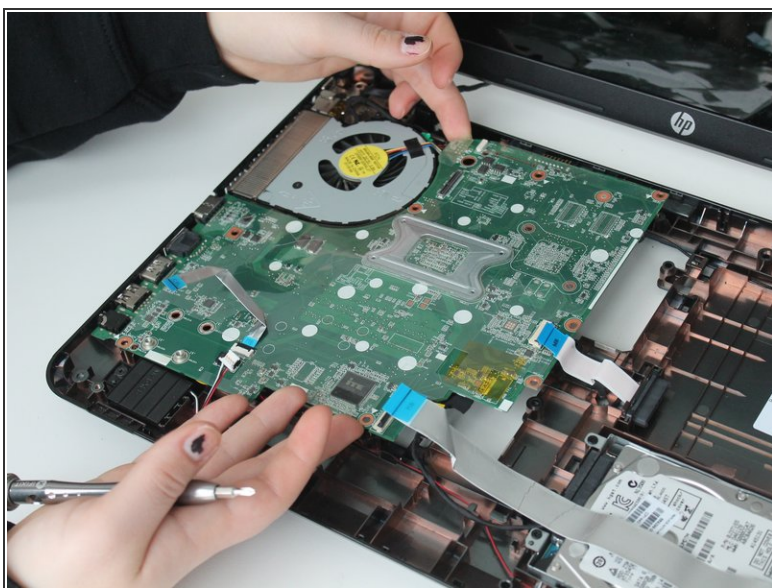


## Step 23




- Remove the Phillips PM2.5x5.0 screw located on the fan, in the upper right corner.

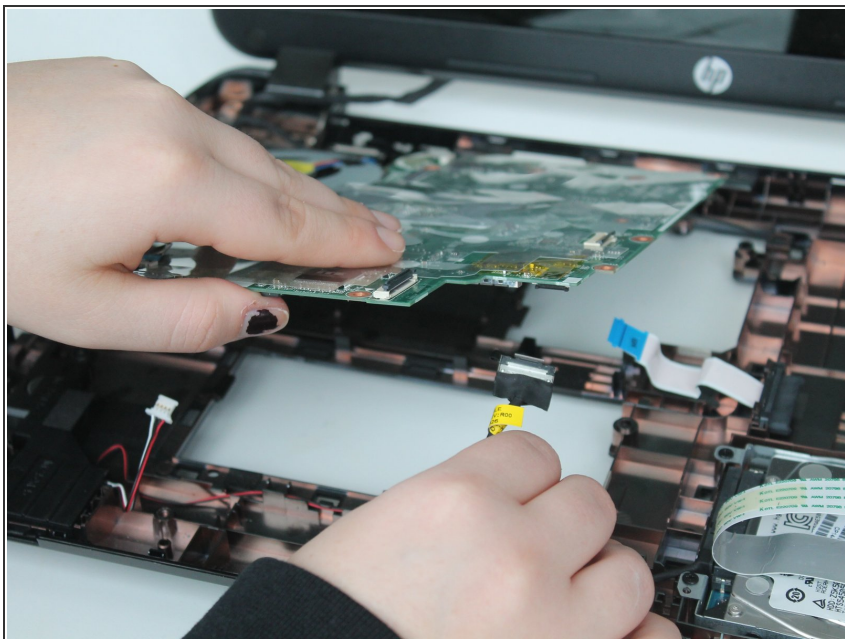
## Step 24



- Carefully lift up the motherboard.

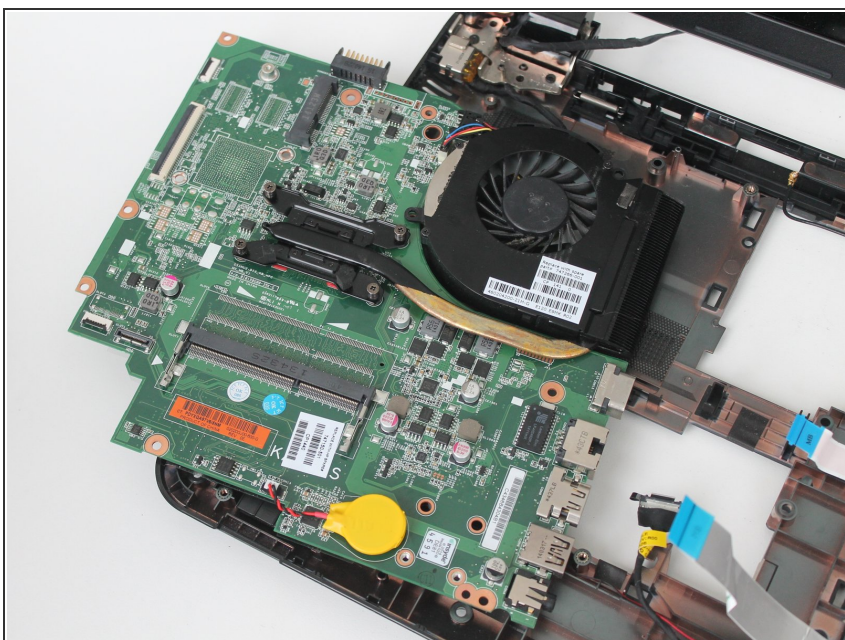
 Do not completely remove the motherboard. Simply lift it. There is a black cable on the bottom of the motherboard that is anchoring it.

## Step 25



- Locate the cable on the underside of the motherboard, in its lower right corner.
- Carefully grip the cable, and pull downward to remove it.

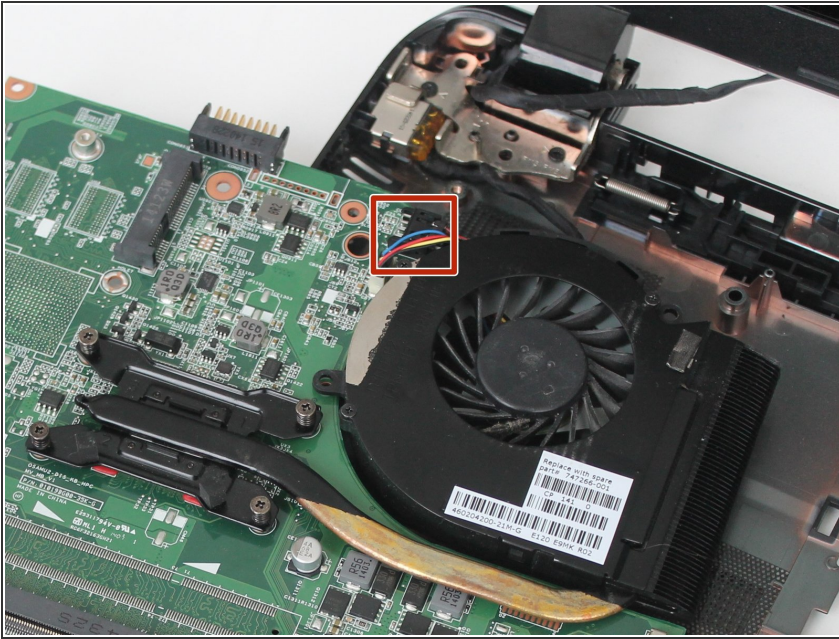
## Step 26



- Flip the motherboard over.

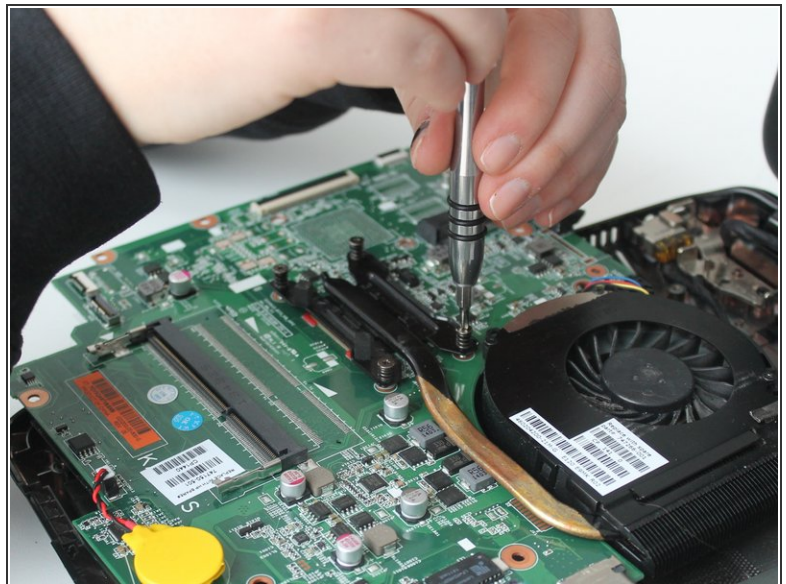
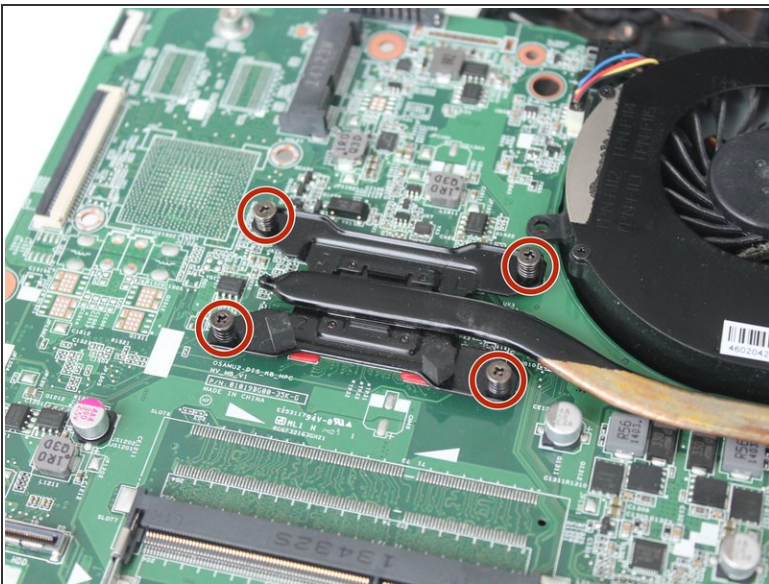


## Step 27



- Locate the charge port cable connection point on the motherboard.
- Grab the charge port cable's connector, and wiggle it to remove it.
- Set the board off to the side.

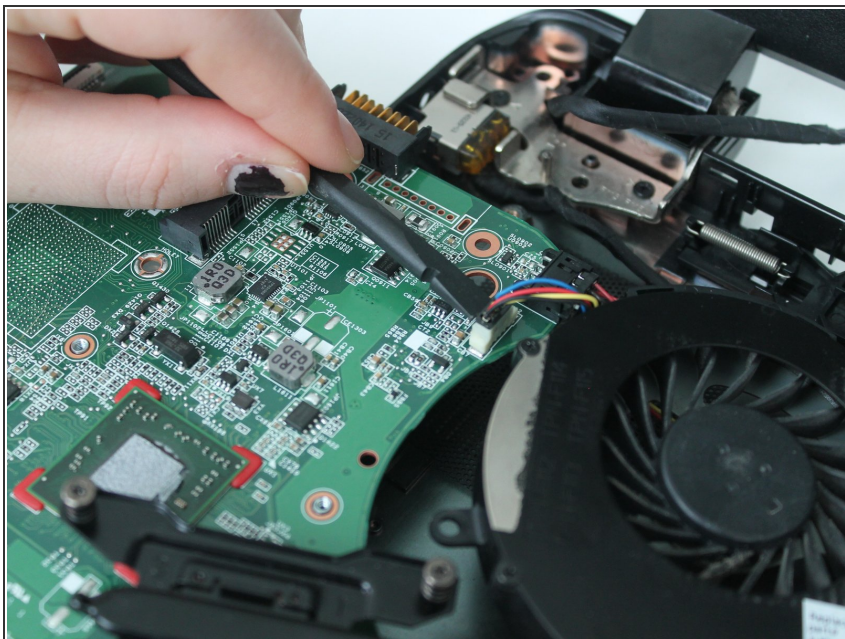
## Step 28 — Fan



- Carefully loosen the four screws on the processor heat sink.
- ⓘ The screws do not come out. They are retained by the heat sink.



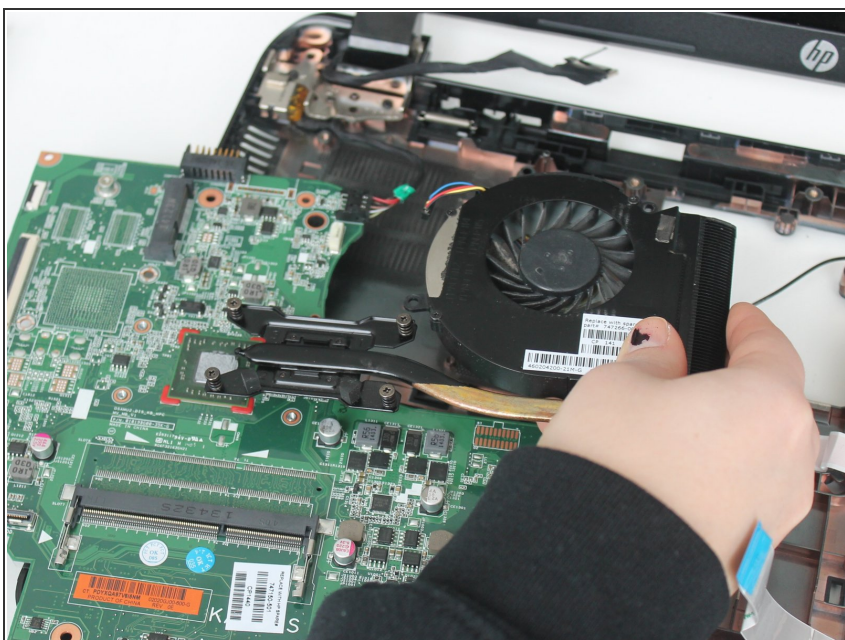
## Step 29



- Disconnect the red-yellow-blue-black cable, next to the fan, on the motherboard.

ⓘ You may need to wiggle it

## Step 30



- Remove the fan.

To reassemble your device, follow these instructions in reverse order.