



Tea Kettle Switch Replacement

It is not an unusual problem: the switch of your kettle pops out of its container and you're not able to put on your kettle anymore.

Written By: Anniek Moll





TOOLS:

- [Phillips #2 Screwdriver](#) (1)
-

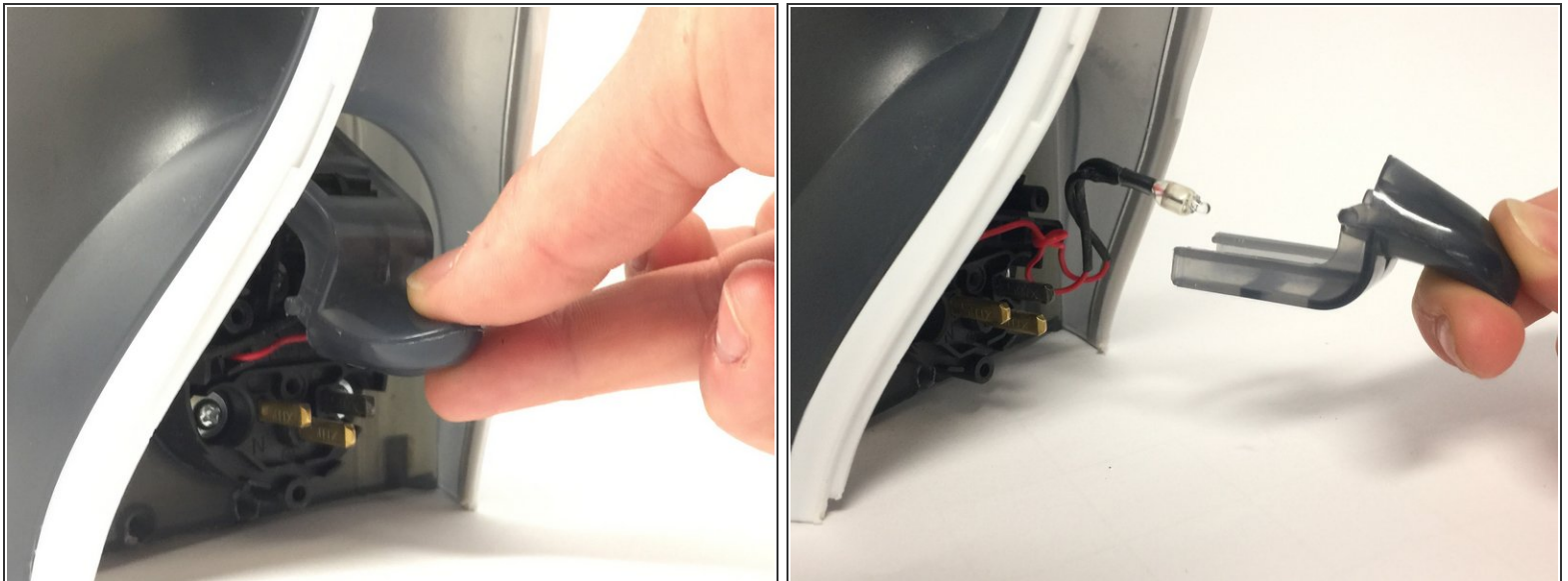
Step 1 — Switch



⚠ Before you start, disconnect the device from its power source.

- Remove the two bottom screws.
- Remove the two top screws.
- Remove the handle from the kettle.

Step 2



- Pull out the switch.

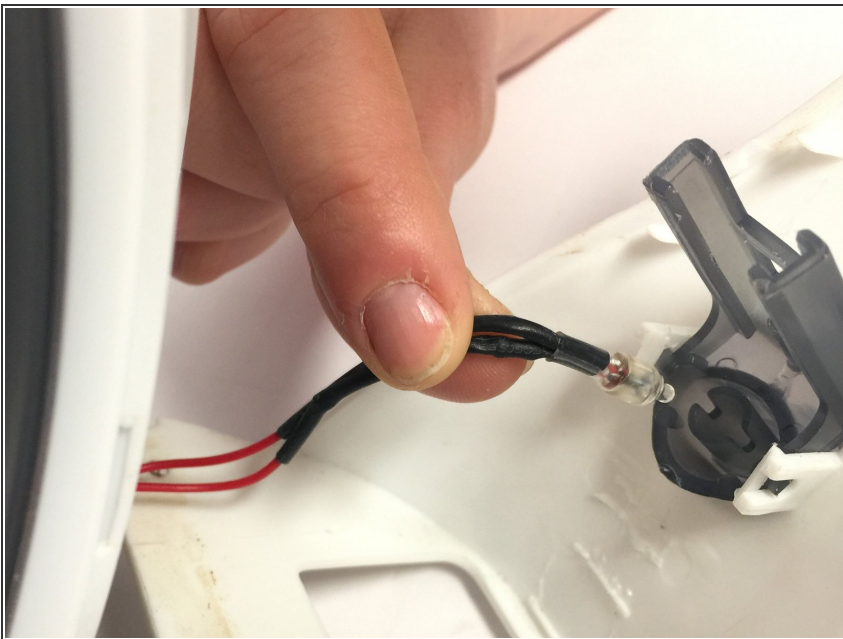
⚠ If you pull too hard, you may dislodge another part as well as the spring that are both positioned behind the switch.

Step 3



- Click the replacement switch back into the handle part.

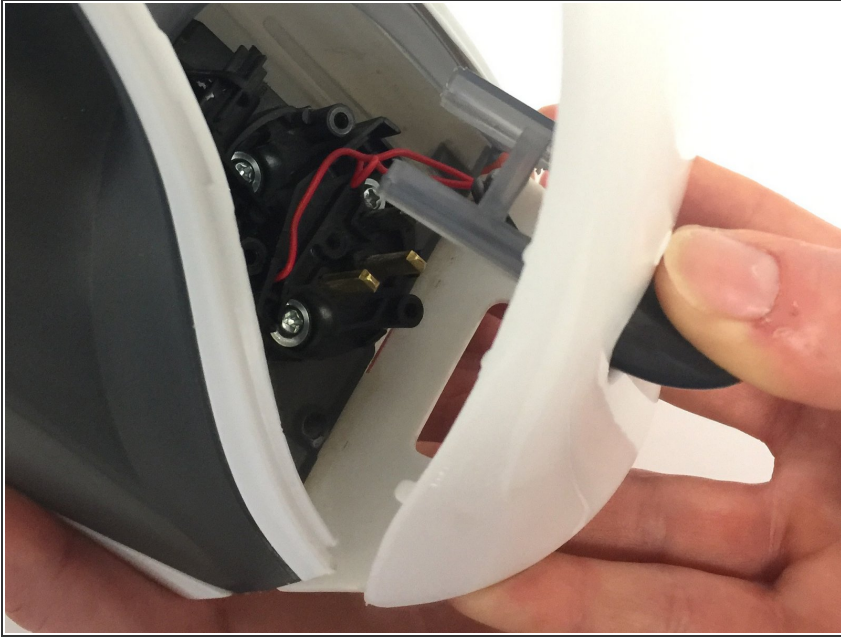
Step 4



- Insert the light back into the switch.

⚠ This might take some extra attention, so be precise.

Step 5



- Place the handle part back on the frame.

Step 6



- Plug in the kettle.
- Press down on the switch to check if it works again.

To reassemble your device, follow these instructions in reverse order.