



Samsung Powerbot R9250 Back Panel Replacement

This guide will illustrate the steps necessary to replace the back panel of the Samsung Powerbot R2950

Written By: Ethen Sanchez





TOOLS:

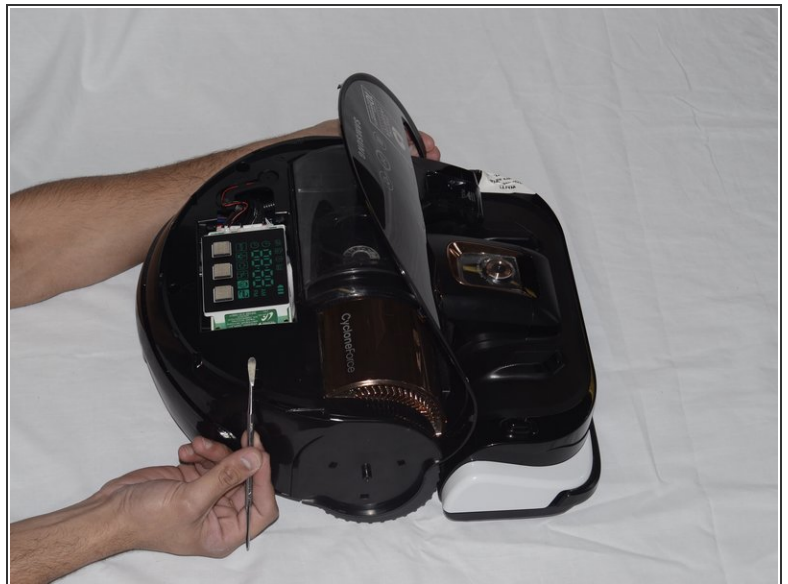
- [Metal Spudger](#) (1)
-

Step 1 — Back Panel



- Find the white outer casing that runs along the rounded back of the bot and pry it out starting from one edge and moving to the other.
- Continue until the whole white case pops off.

Step 2



- On the edge where the back panel meets the protective casing on the side of the bot (below the Samsung logo), pry the panel up, causing it to pop up.

Step 3



- Continue pulling up the panel until it comes off.

To reassemble your device, follow these instructions in reverse order.