



Samsung Powerbot R9250 Battery Replacement

This guide will illustrate the steps needed to take in order to replace the battery.

Written By: Ethen Sanchez

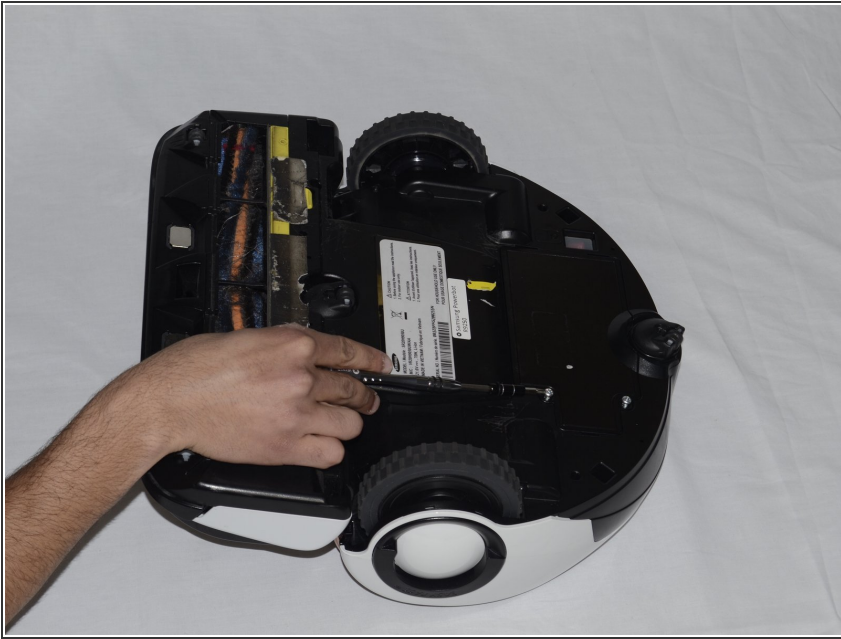




TOOLS:

- [Mahi Driver Kit - 48 Bit Driver Kit](#) (1)
-

Step 1 — Battery



- On the bottom of the bot, locate the battery lid along the curved edge of the bot.

Step 2



- Unscrew each of the two screws and remove the lid to expose the battery.

Step 3



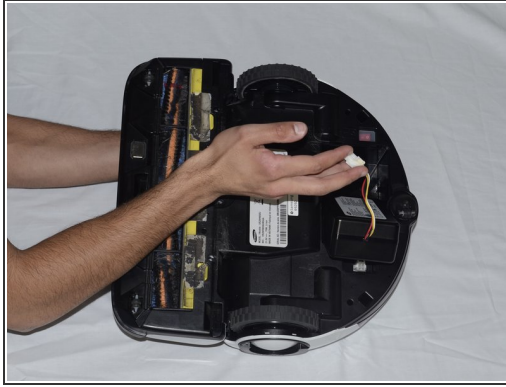
- Follow the wires to find the small white box next to the battery.

Step 4



- On the side of the white box facing the battery, find the rigid tab.

Step 5



- Push this tab into the white box, and pull the wires up. This releases the wire from the white box, allowing you to fully remove the battery.

To reassemble your device, follow these instructions in reverse order.