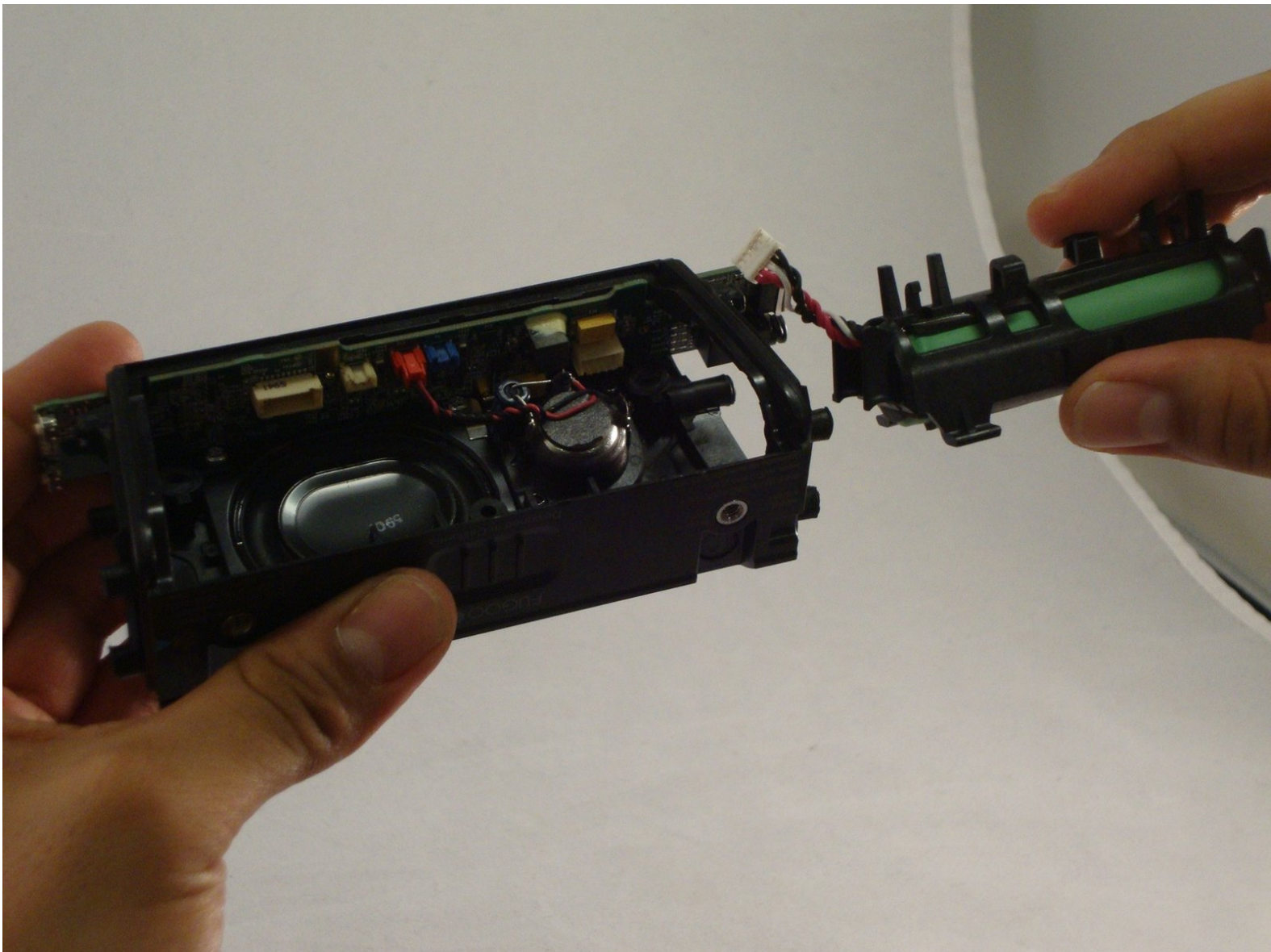




Fugoo Tough Battery Replacement

This guide shows how to remove and replace the battery of the Fugoo+Tough.

Written By: Alicia Edwards



INTRODUCTION

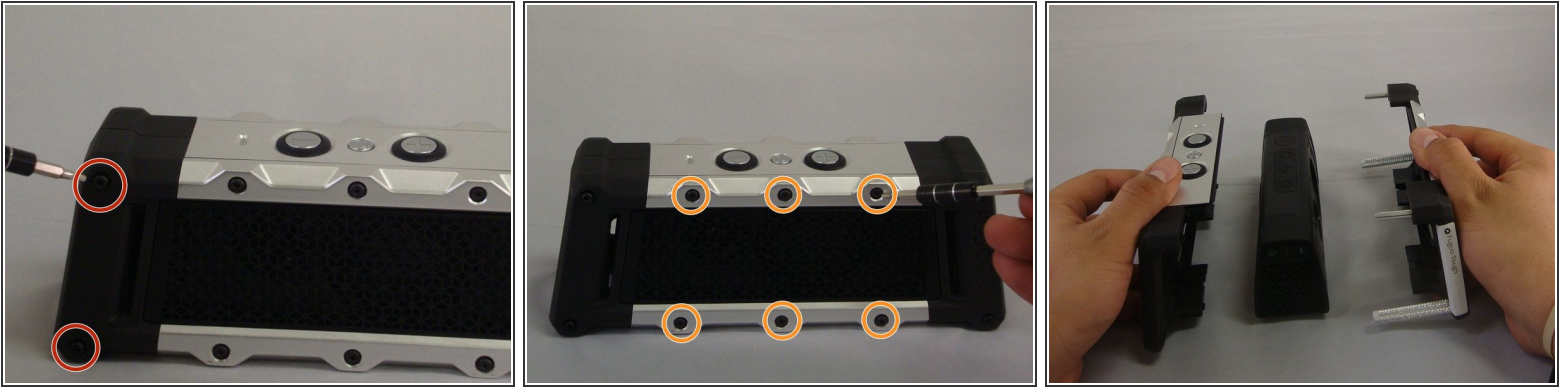
This guide shows how to remove and replace the battery of the Fugoo Tough.



TOOLS:

- [iFixit Opening Tools](#) (1)
 - [Mako Driver Kit - 64 Precision Bits](#) (1)
-

Step 1 — Battery



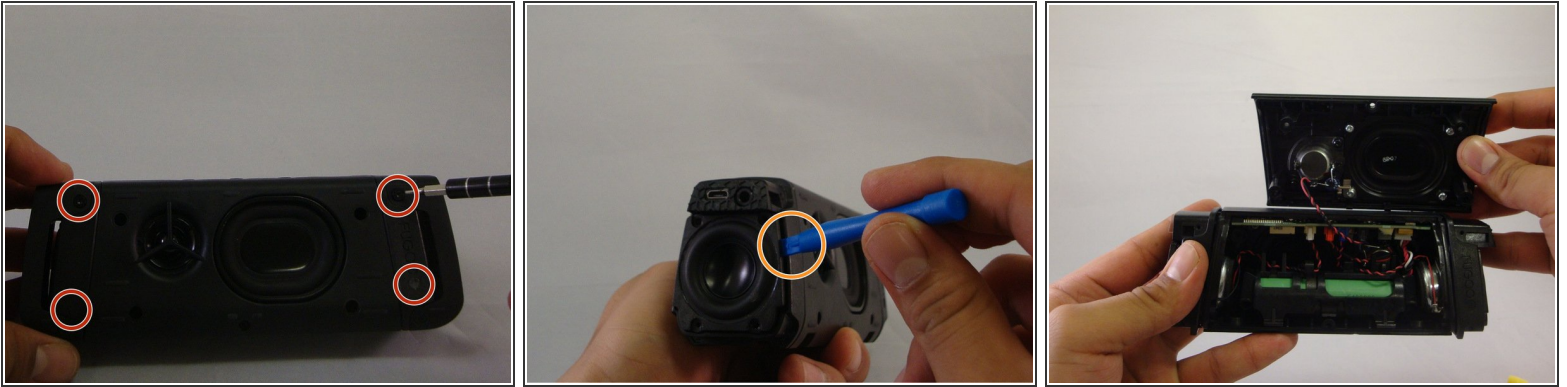
- Begin by unscrewing the four 10.72mm corner screws using the Hex 2.0 screwdriver.
- Using the Hex 1.5 screwdriver, remove the remaining six 5.79mm screws on the front of the speaker.
- Pull the front part of shell away from the back part of shell.

Step 2



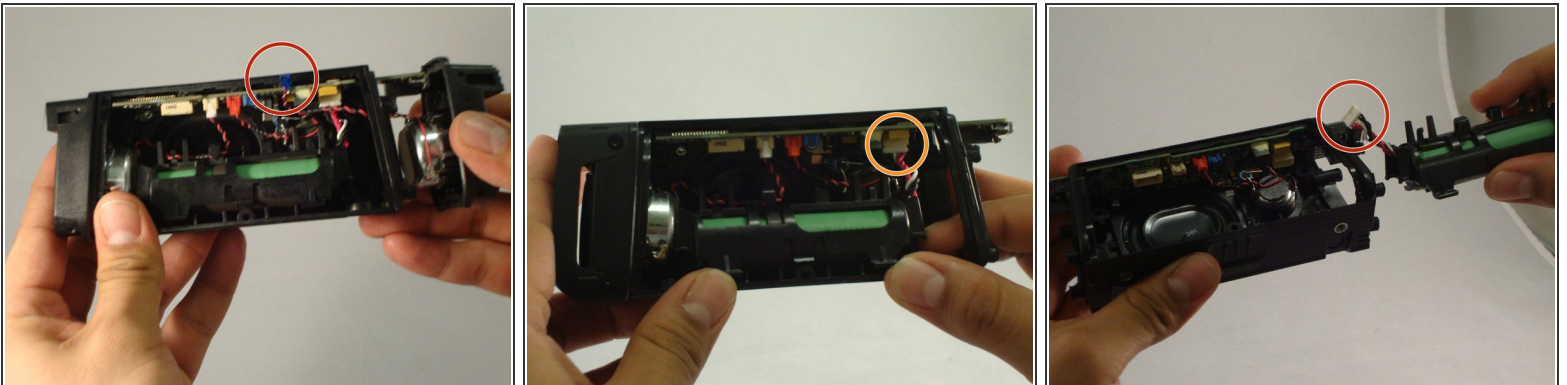
- Change to the h1.3 head. Remove all four 5.57mm screws on both speaker covers.
- Pull on the speaker covers to remove them.
- Rotate to side the speaker that has the charging port. Remove the four 5.57mm screws facing you.
- Rotate the speaker 180 degrees and then remove the four 5.57 screws on the side speaker that has the power/bluetooth buttons.

Step 3



- Have back of speaker facing you, remove 5-12.70mm screws using 1/16 flat head screwdriver.
- Using the plastic opening tool, you will be able to wedge back face of speaker off.

Step 4



- ⓘ The circuit board will be revealed, you will notice the various clips/wires that go to the speakers and the battery
- Remove the blue "clip" from the mother board, then pull the on the speaker and remove it, to give you more room to work
- Gently pull down on the largest bundle of wires connected to the mother board by a white clip.
- ⓘ Battery isn't anchored down, you will be able to pull it out of device
- The battery can now be replaced

To reassemble your device, follow these instructions in reverse order.