



# Classique 087CQA Switches Replacement

This guide will show you how to replace the hot, cold, and power switches.

Written By: Brandon Jestis



---

## INTRODUCTION

Defective switches can prevent the hair dryer from working properly, so we are replacing the switches. Replacing the switches should ensure the hair dryer turns on and off, and changes to hot or cold air.



### TOOLS:

- [Pro Tech Toolkit](#) (1)
-

## Step 1 — Switches



- Begin with the side with switches

## Step 2



- Remove the Phillips PH0 bit
- Insert the bit into the screwdriver

### Step 3



- Unscrew the shell screw (1) with the screwdriver
- 5mm Phillips flat-head screw

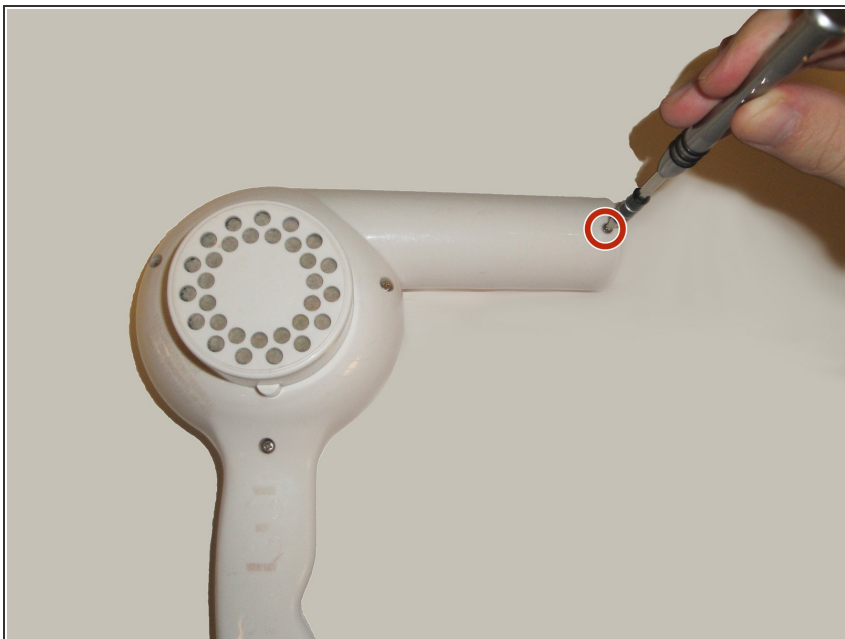
### Step 4



- Flip the hair dryer over to the side without switches



## Step 5



- Unscrew the shell screw (1) with the screw driver
- 5mm Phillips flat-head screw

## Step 6



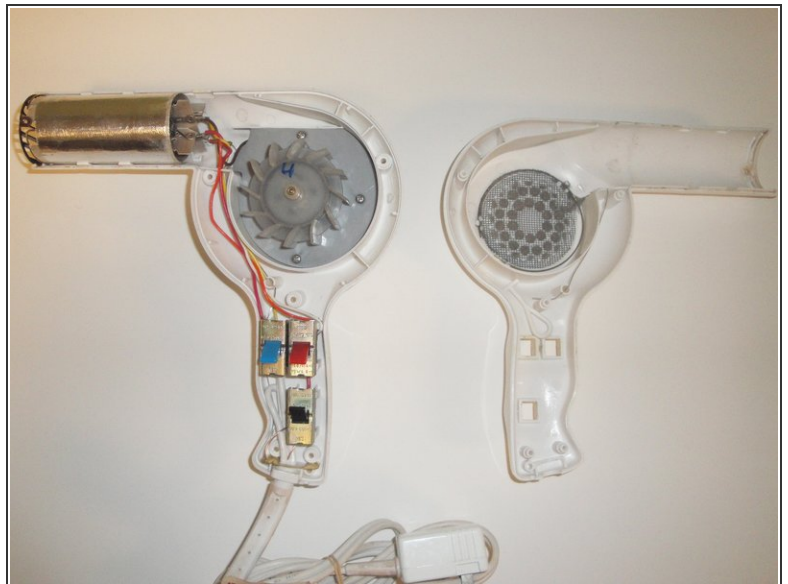
- Remove the bit from the screwdriver and insert the Phillips PH2 bit

## Step 7



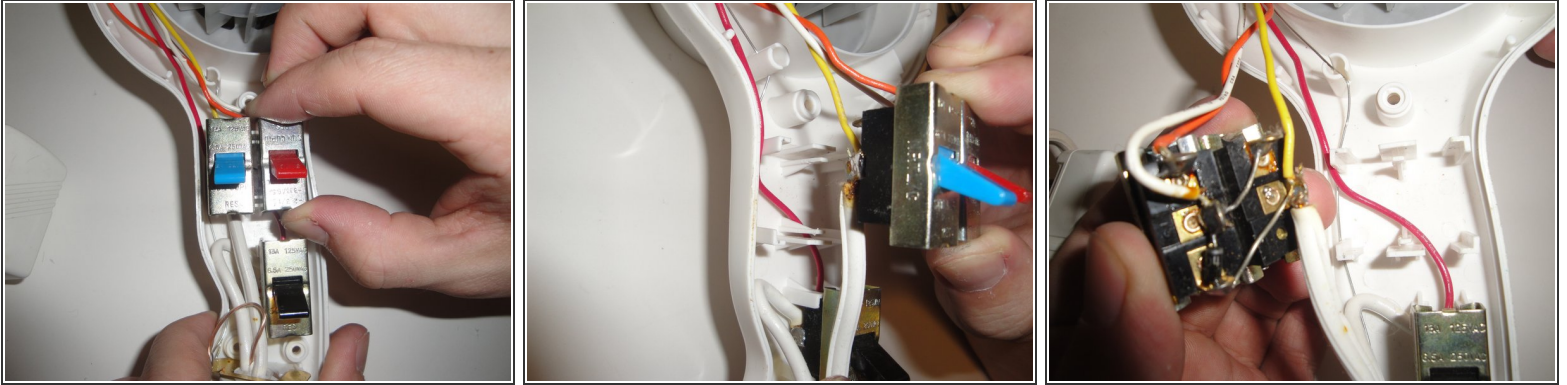
- Unscrew the remaining shell screws (5) with the screwdriver
- 15mm Phillips round-head screws

## Step 8



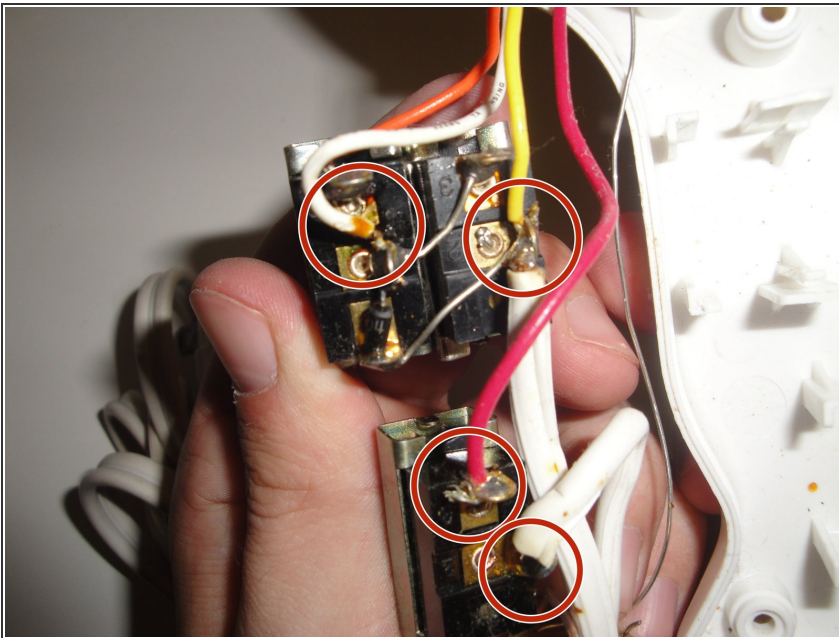
- Gently pull the two sides apart
- Separate each side

## Step 9



- Pull up on the switches

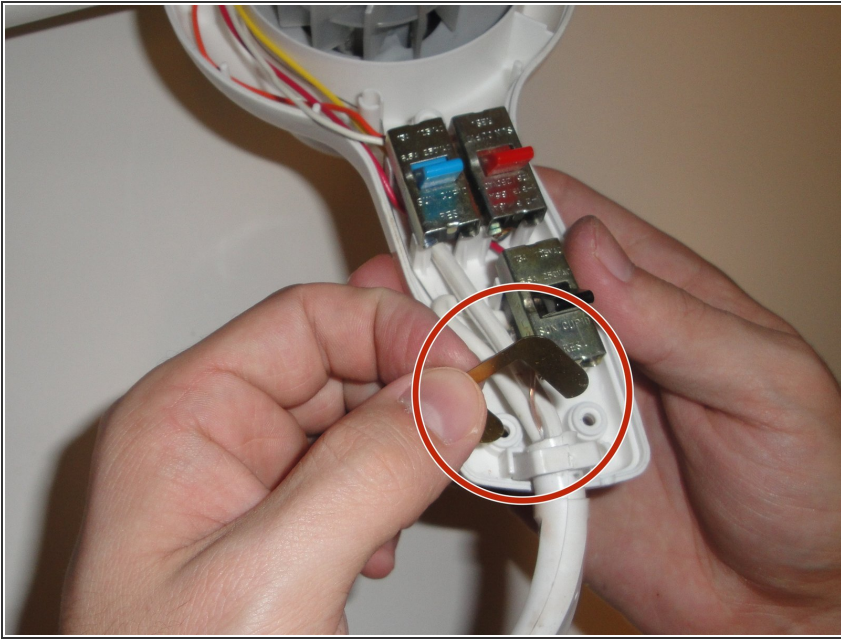
## Step 10



- Verify wires are connected to each switch and are in good condition

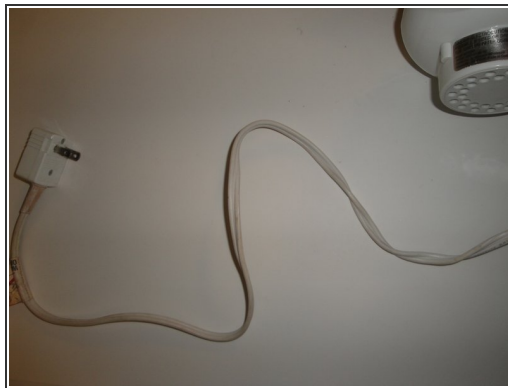
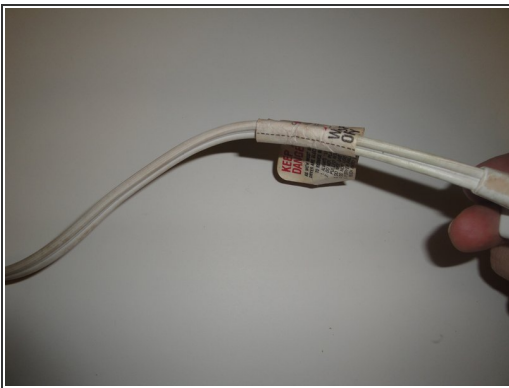


## Step 11



- Reseat the switches

## Step 12



- Check power cord for tears or kinks

To reassemble your device, follow these instructions in reverse order.