



Classique 087CQA Heating Element Replacement

This guide will show you how to replace the heating element.

Written By: Brandon Jestis



INTRODUCTION

A defective heating element can prevent the hair dryer from heating blown air, so we are replacing the heating element. Replacing the heating element should ensure hot air when blown.



TOOLS:

- [Pro Tech Toolkit](#) (1)
-

Step 1 — Heating Element



- Begin with the side with switches

Step 2



- Remove the Phillips PH0 bit
- Insert the bit into the screwdriver

Step 3



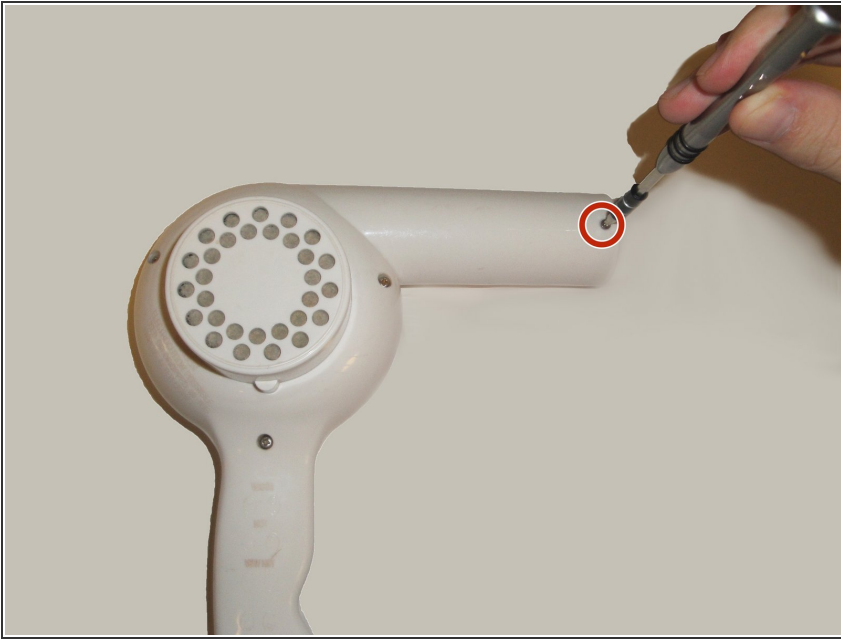
- Unscrew the shell screw (1) with the screw driver
- 5mm Phillips flat-head screw

Step 4



- Flip the hair dryer over to the side without switches

Step 5



- Unscrew the shell screw (1) with the screwdriver
- 5mm Phillips flat-head screw

Step 6



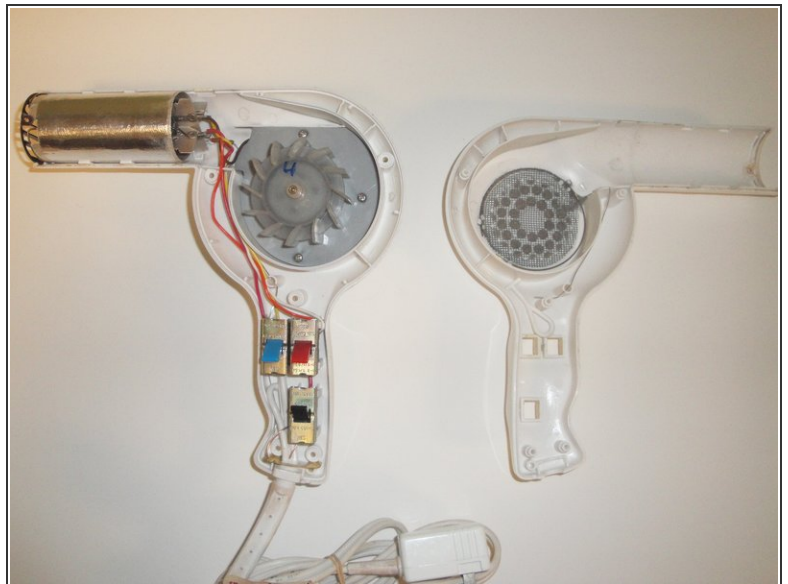
- Remove the bit from the screwdriver and insert the Phillips PH2 bit

Step 7



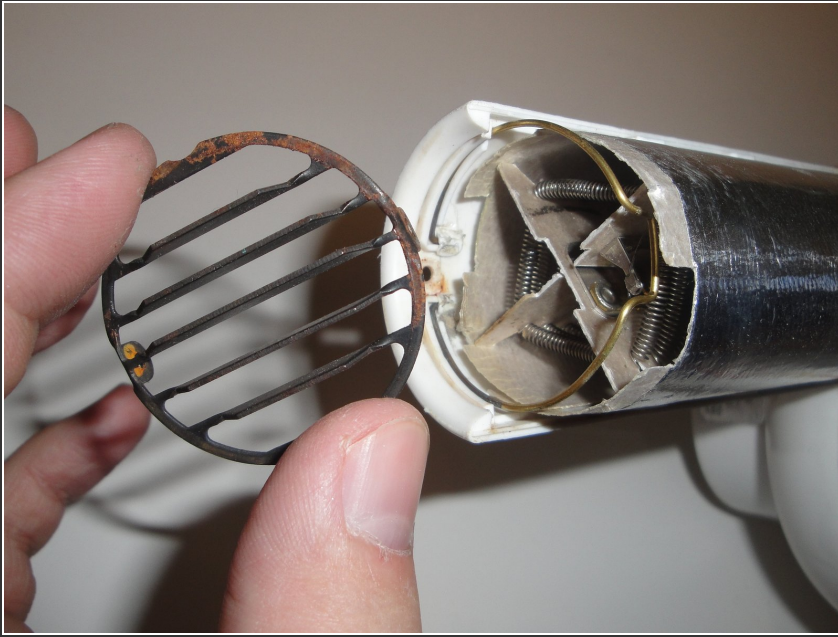
- Unscrew the remaining shell screws (5) with the screwdriver
- 15mm Phillips round-head screws

Step 8



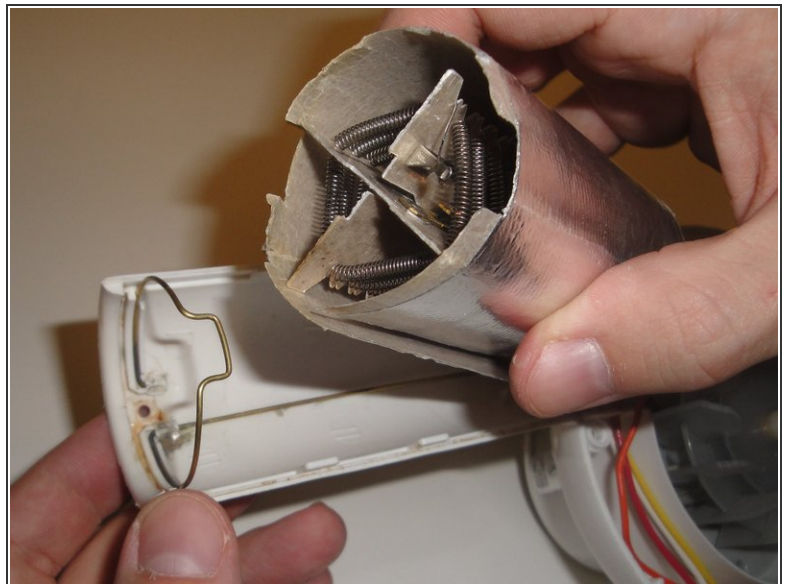
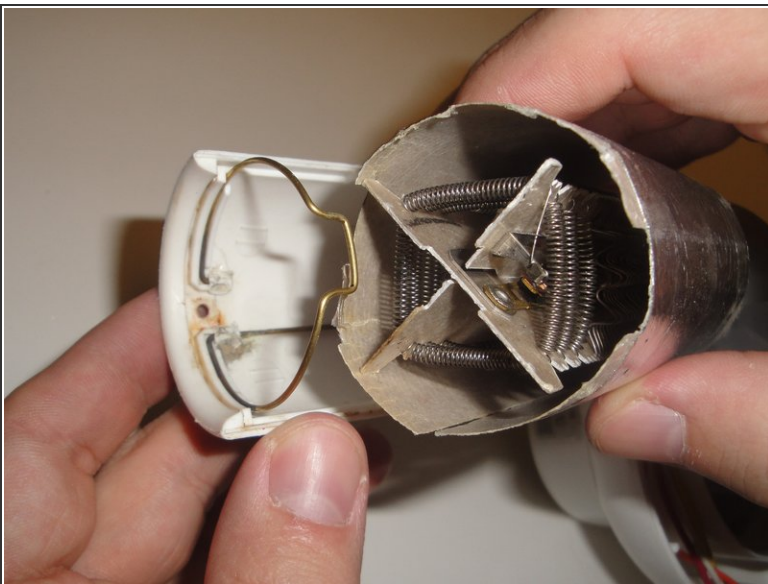
- Gently pull the two sides apart
- Separate each side

Step 9



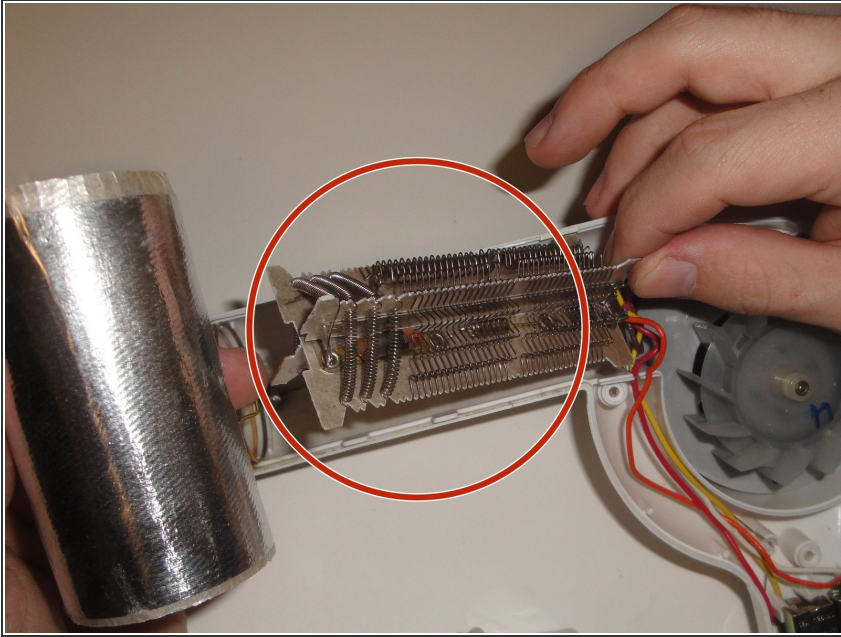
- Remove front grill

Step 10



- Pull up and remove the heating element assembly

Step 11



- Remove the outer sleeve and replace the heating element

To reassemble your device, follow these instructions in reverse order.