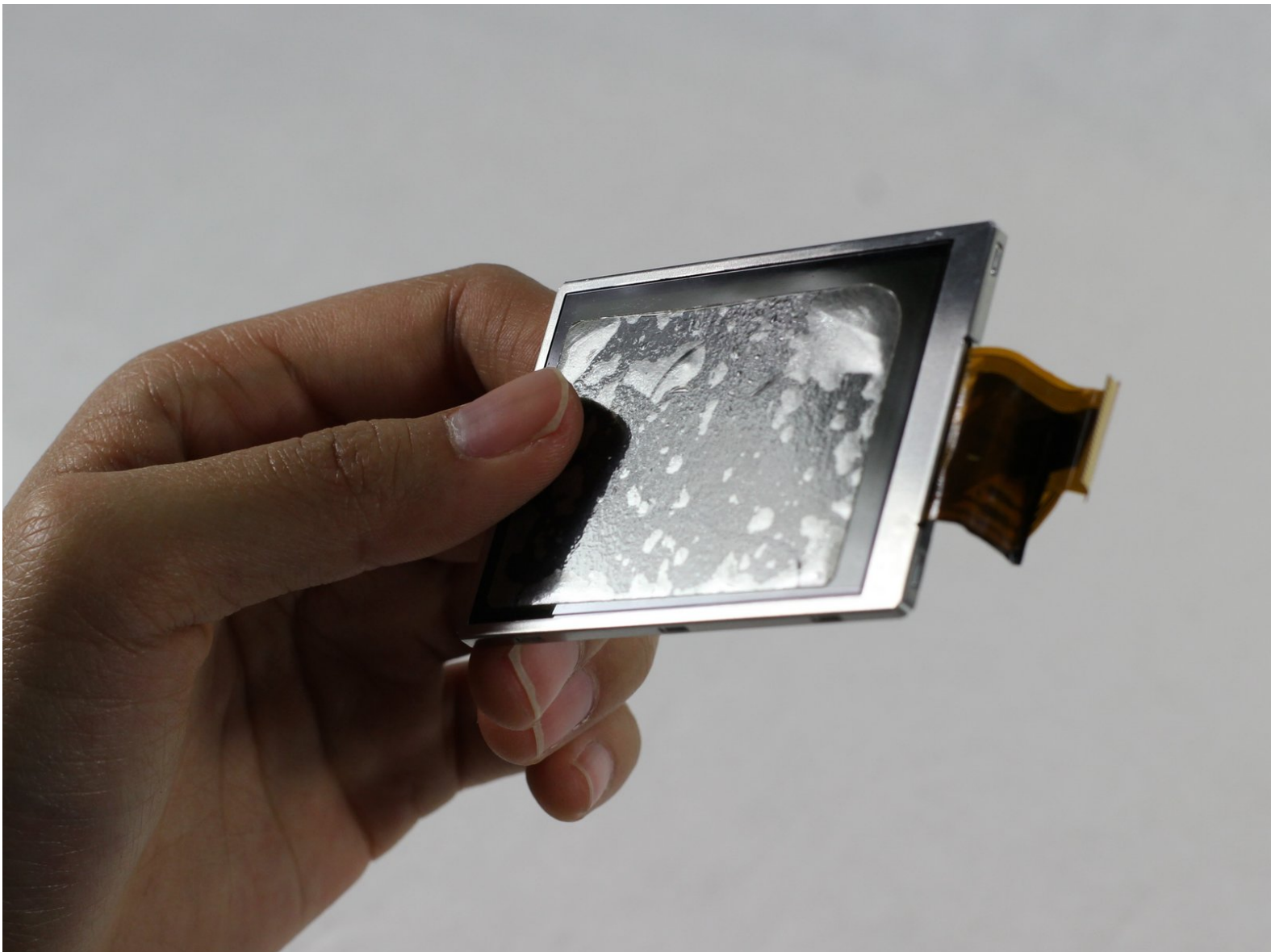




# Fujifilm Finepix S1000fd Display Screen Replacement

If you need to replace the display screen, here is an easy to follow repair guide for Fujifilm Finepix S1000fd's display screen

Written By: Lizzie Eller



## INTRODUCTION

Use caution when going through with the procedure. This procedure involves doing operations near the motherboard of the device, which has many sensitive components.

---

### TOOLS:

- [iFixit Opening Tools](#) (1)
  - [Phillips #00 Screwdriver](#) (1)
  - [Tri-point Y0 Screwdriver](#) (1)
-

## Step 1 — Rear Cover Casing



- Use the Phillips PH00 screwdriver to remove all the 0.5mm screws on the side.

## Step 2



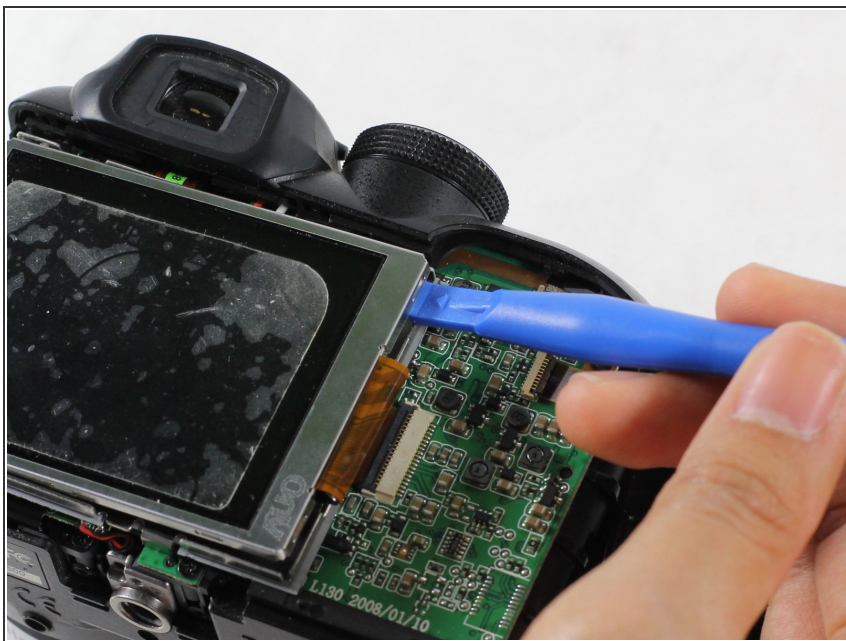
- Use the Tri-point Y0 screwdriver to remove the two 0.5mm screws on the horizontal axis.
- Remove the other two 0.5mm screws on the bottom with the PH00 screwdriver.

## Step 3



- Once you unscrew all of the screws, carefully remove the rear casing.
- ⚠ Be careful not to pull the rear casing, otherwise you will rip the ribbon cable.
- Detach the ribbon cable by lifting the tab on the connector.

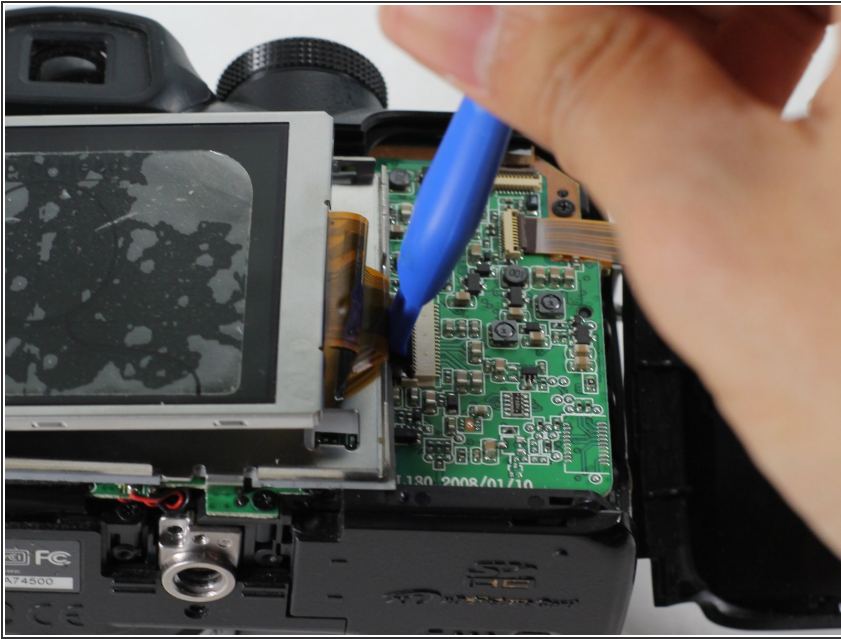
## Step 4 — Display Screen



- Use a plastic opening tool to lift up the right side of the display screen.



## Step 5



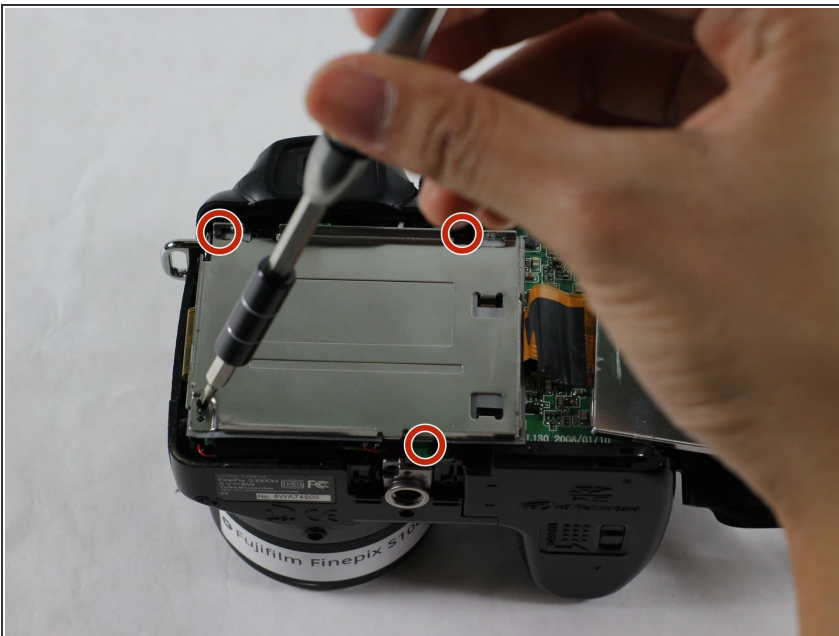
- Once the screen is out, you will realize that it is still connected to the ribbon cable. To unplug this ribbon cable, use a plastic opening tool to pull up and to the left on the ribbon cable connector and release the ribbon cable.

## Step 6



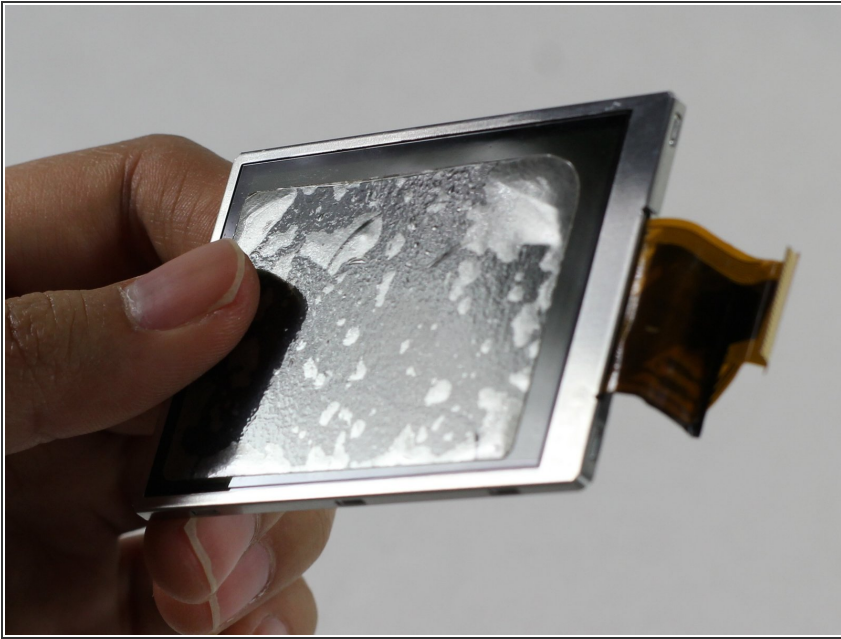
- Using your PH00 screwdriver, unscrew the 0.5mm screw located on the bottom left hand corner where the display screen used to be.

## Step 7



- Use the PH00 screwdriver to unscrew the 0.5mm screws located near the top left corner, top right corner, and bottom right corner.

## Step 8



- Lift up the gray component where the display screen use to sit in.

To reassemble your device, follow these instructions in reverse order.