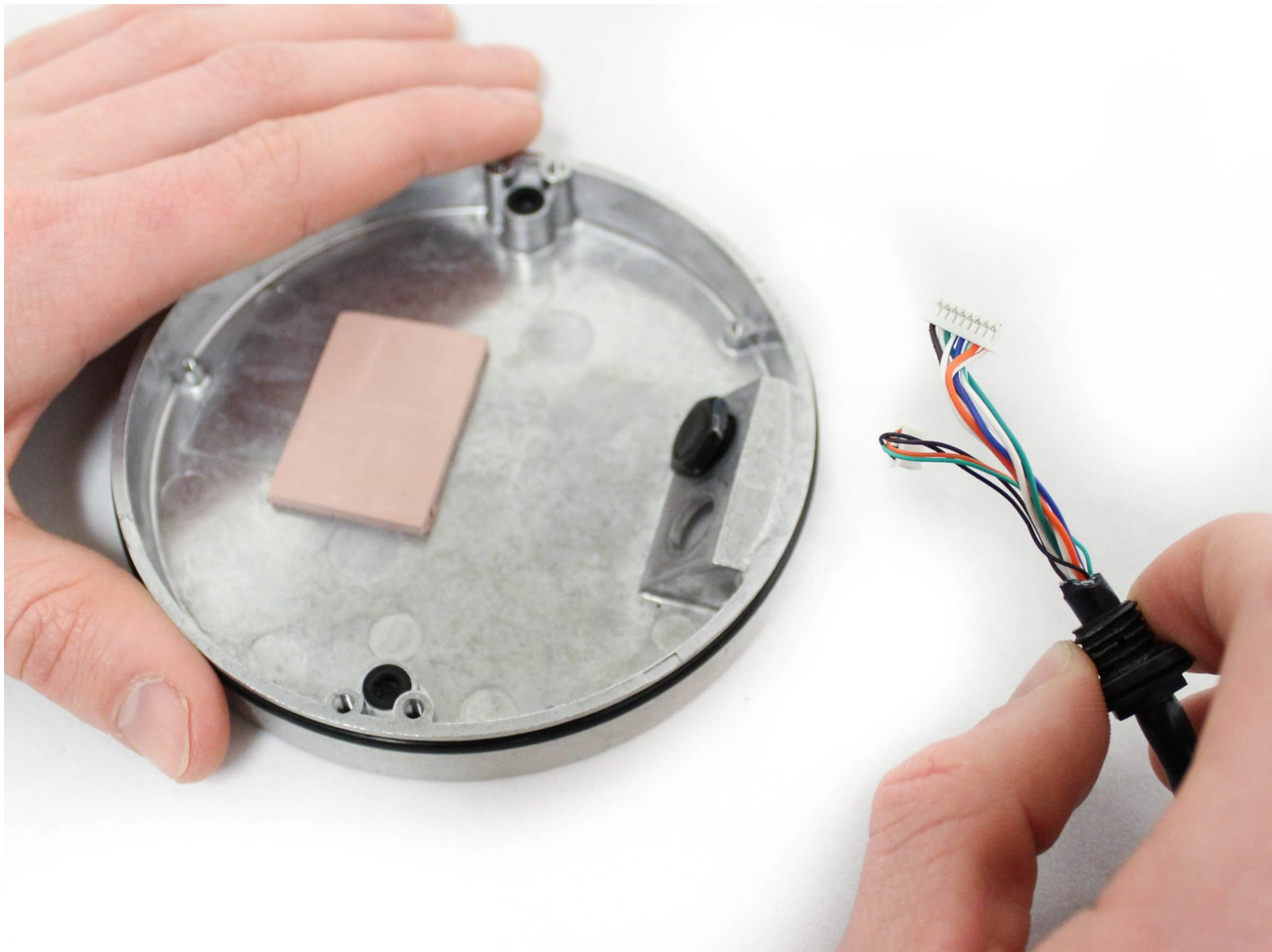




# AvertX HD810 PoE Cable Replacement

This guide covers the replacement of the PoE Cable in the AvertX HD810 dome camera.

Written By: Luke Browning



## INTRODUCTION

This is the replacement guide for the PoE (Power over Ethernet) cable for the AvertX HD810. The only prerequisite for this guide is the Clear Dome Cover. **Make sure to completely turn off, power down, and unplug your AvertX HD810 before attempting this operation.**

---

### TOOLS:

- [T10 Torx Security Bit Screwdriver](#) (1)
  - [Phillips #1 Screwdriver](#) (1)
  - [1/2" Wrench](#) (1)
  - [Phillips #000 Screwdriver](#) (1)
-

## Step 1 — Clear Dome Cover



- Lift off the paintable snap-on cover from the AvertX HD810 dome security camera.

⚠ Optimally, the device should be turned off and the PoE (Power over Ethernet) unplugged.

## Step 2



- Loosen **both** 10mm screws on either side of the clear dome cover housing using a T10 Torx security screwdriver.

**i** It is not recommended to remove the screws from the clear dome cover housing. The screws are apart of the cover and not intended to come out.

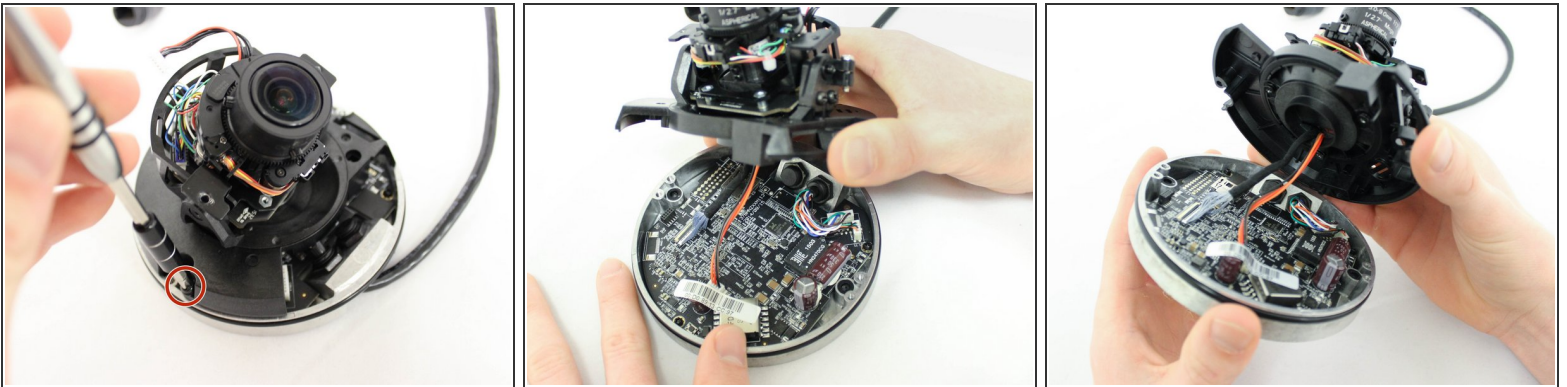


### Step 3



- Gently pull off the clear dome cover from the camera base.

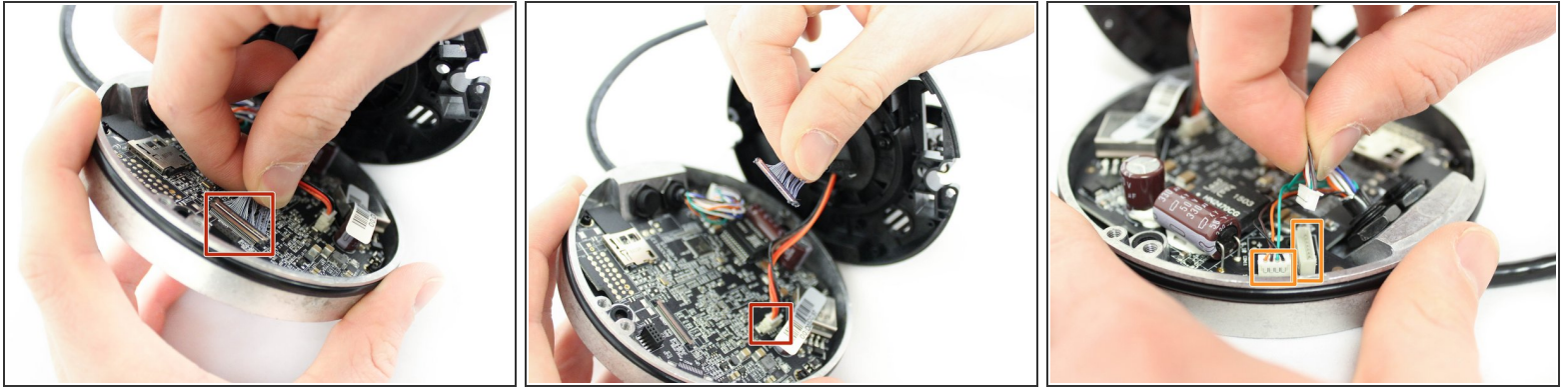
### Step 4 — PoE Cable



**⚠ Make sure the device is turned off and unplugged *completely* before attempting any more disassembly .**

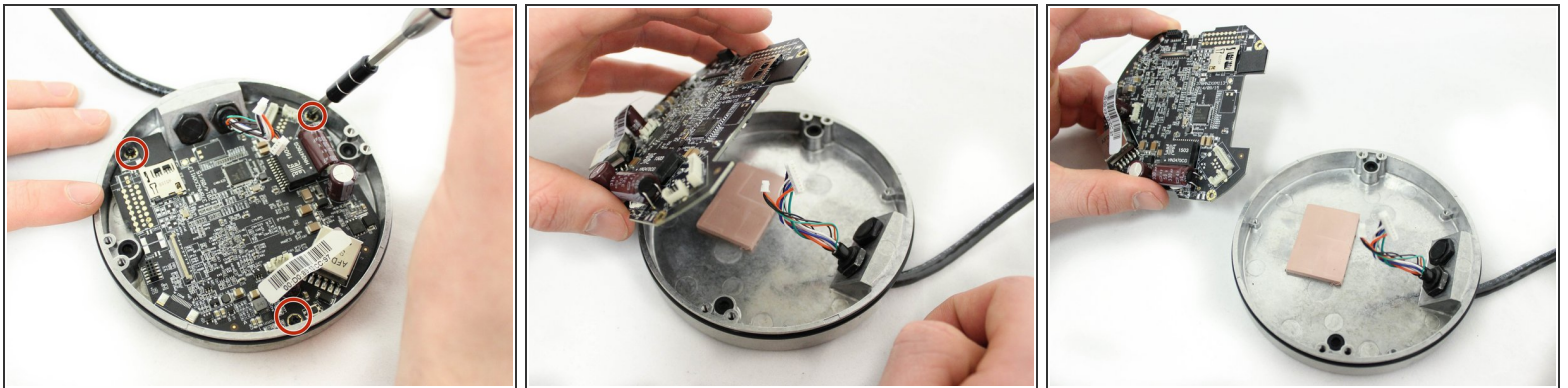
- Unscrew the two 10mm screws holding the plastic camera base to the metal camera base using the PH1 screwdriver.
- **Be aware that cables are still connected under this base**, and gently lift the plastic base with the camera away from the metal base with the motherboard.

## Step 5



- Disconnect the two cables from the camera base motherboard by **gently but firmly** pulling *directly* away from their respective ports.
- Disconnect the two PoE (Power over Ethernet) cables from the motherboard by **gently but firmly** pulling the connected cables directly away from their respective ports.

## Step 6



- Using a **nonmagnetic**, PH000 Phillips Head screwdriver, remove the three 6mm screws that hold the motherboard to the metal base.
- Set the motherboard aside on a non-static surface.

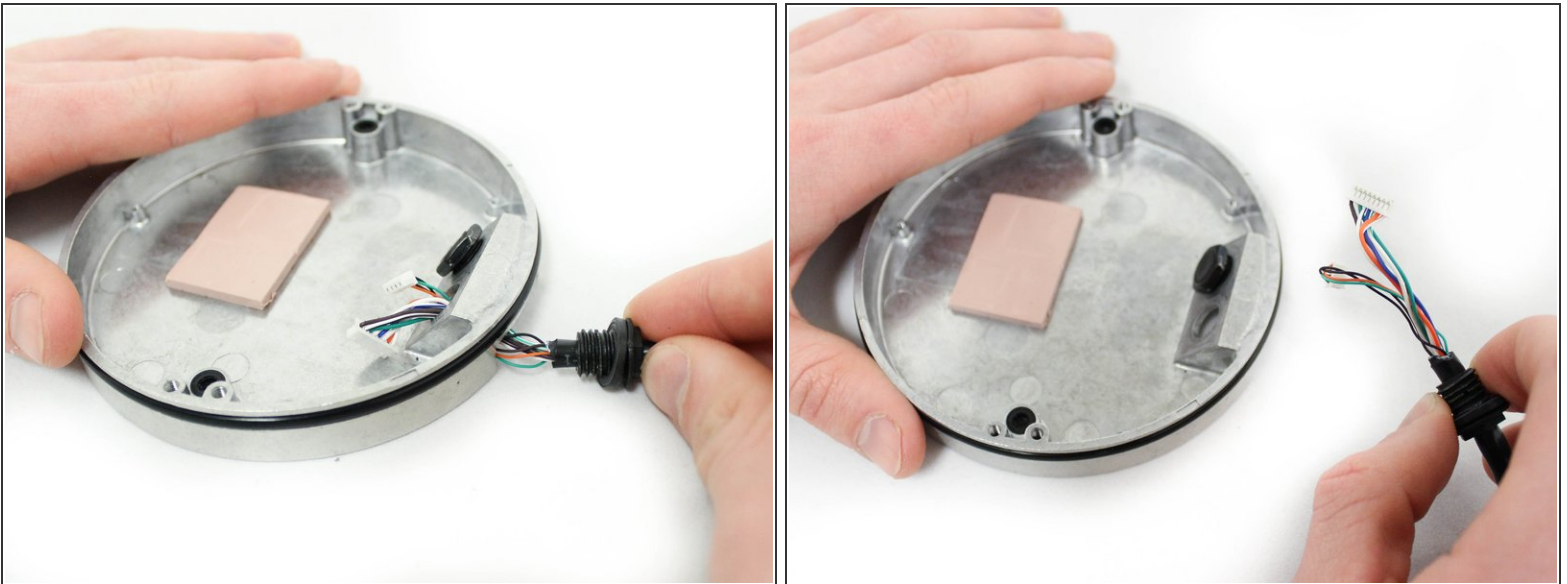


## Step 7



- Remove the 1/2" hex nut holding the cable in place to the metal base with a 1/2" open-ended wrench.

## Step 8



- Pull the PoE cable away from the metal camera base while angling the plastic connectors through the hole

To reassemble your device, follow these instructions in reverse order.