



Garmin Nuvi 42LM USB Replacement

If there are problems charging the battery or the USB port is bent, follow the guide to replace the USB port.

Written By: Elina Zhukov



INTRODUCTION

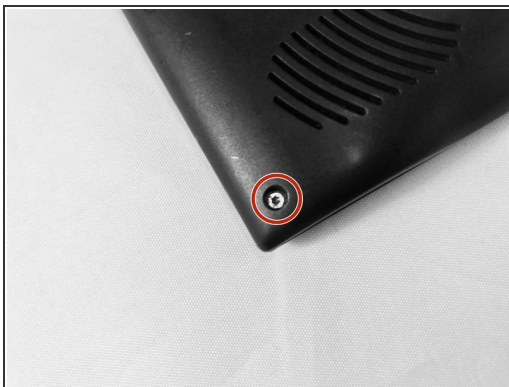
Here you will be removing several parts of the device to get to the USB port.



TOOLS:

- [T5 Torx Screwdriver](#) (1)
 - [iFixit Opening Tools](#) (1)
 - [Soldering Iron](#) (1)
-

Step 1 — Back Cover



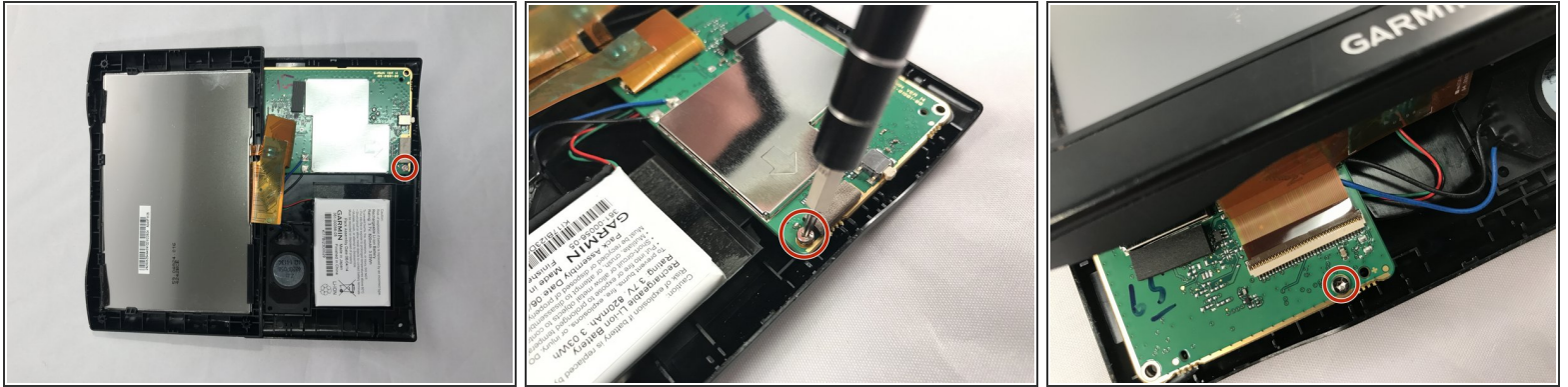
- Remove the four screws on the back of the GPS using the T5 Torx screwdriver.

Step 2



- Pry the GPS open using a plastic opening tool.
- ⓘ When prying open the device, use caution to avoid damaging the motherboard.

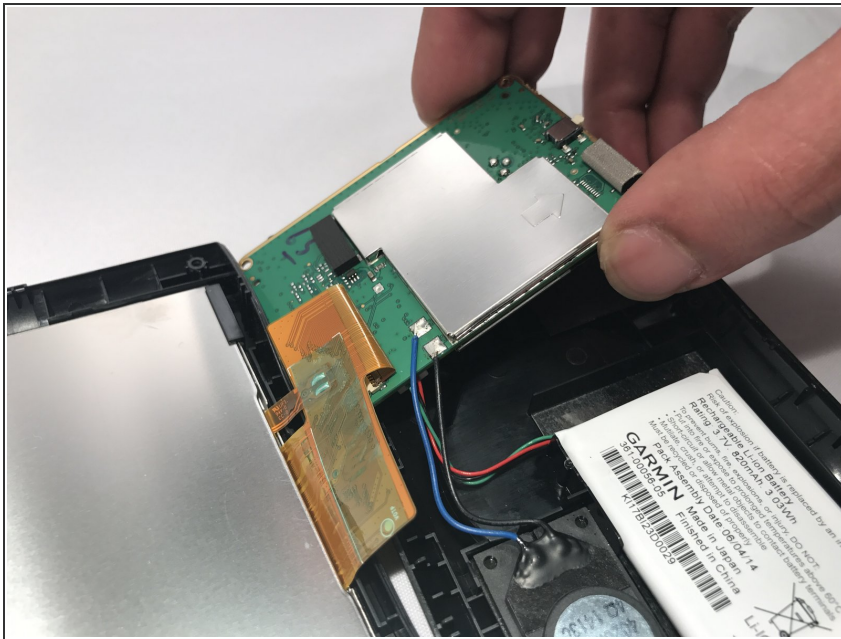
Step 3 — USB



- Using the T5 Torx screwdriver, remove the two screws located on the motherboard.

i There are two screws - one in the front and one in the back of the motherboard.

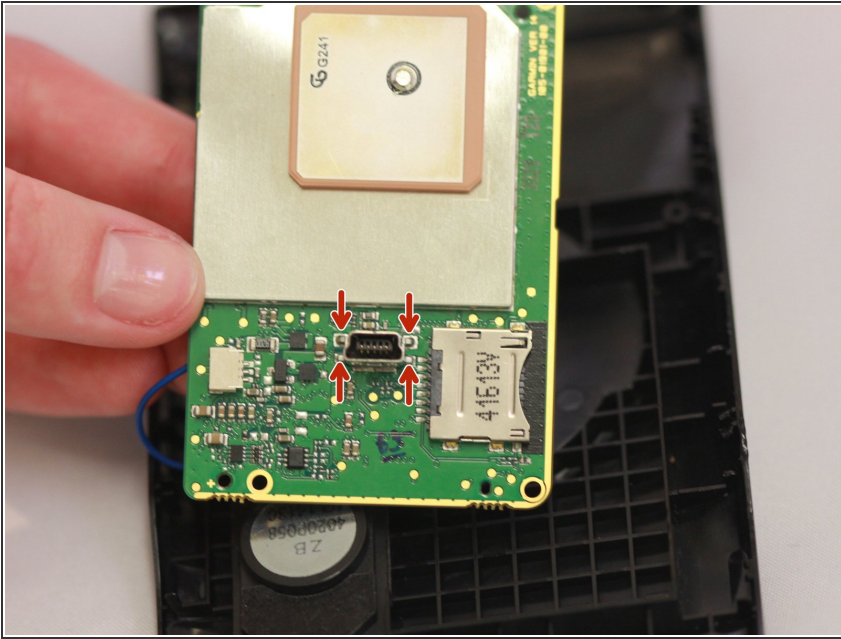
Step 4



- Move the motherboard from from its designated location on the GPS.

i Do not pull on red, green, blue and black cables when repositioning the motherboard.

Step 5



- Using a soldering iron, desolder the USB port connected to the motherboard.
- Check out this awesome guide on [how to solder and desolder connections](#).

To reassemble your device, follow these instructions in reverse order.