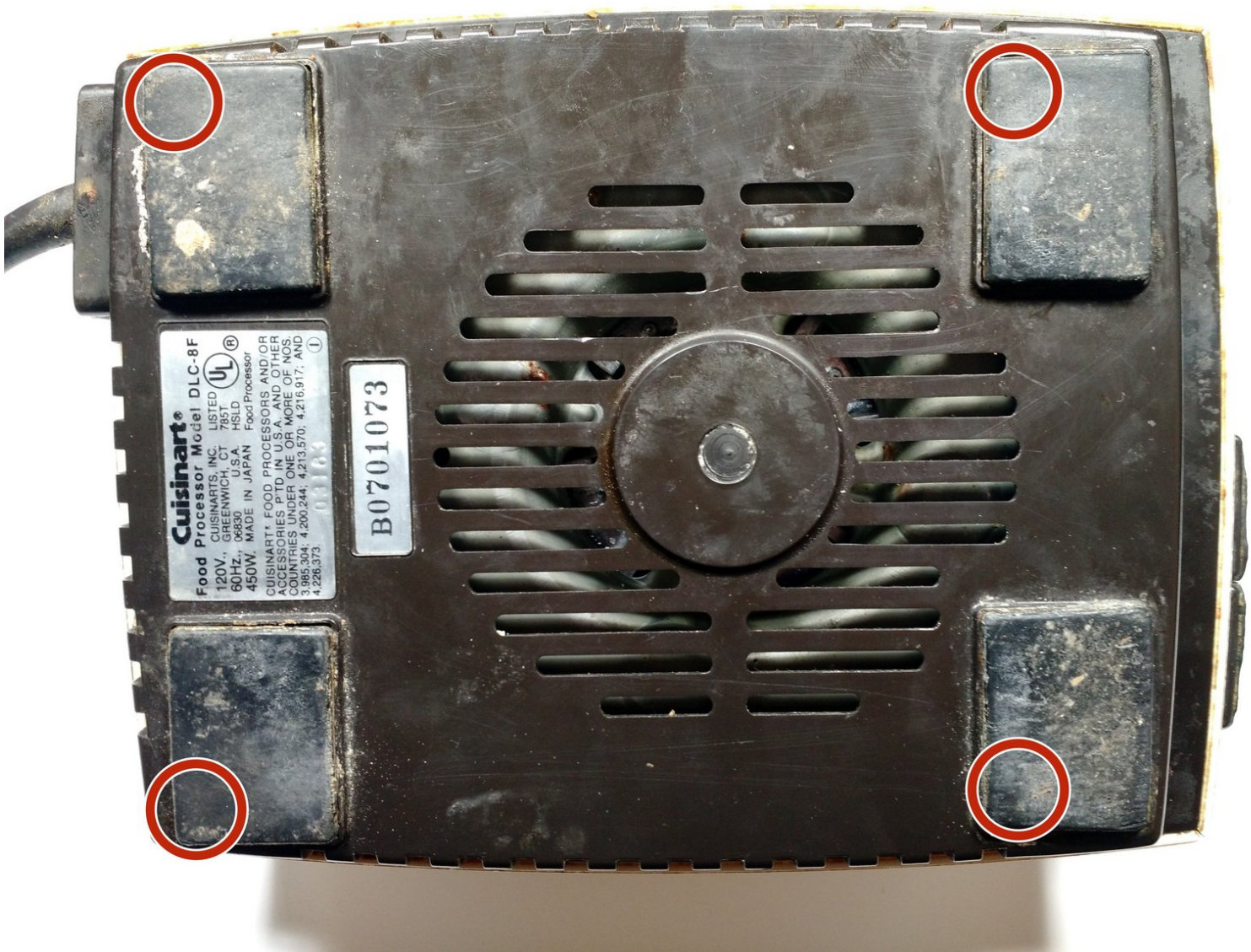




# Cuisinart DLC-8F Safety Switch Replacement

Use this guide to replace the safety switch in your Cuisinart DLC-8F.

Written By: David Colman



## INTRODUCTION

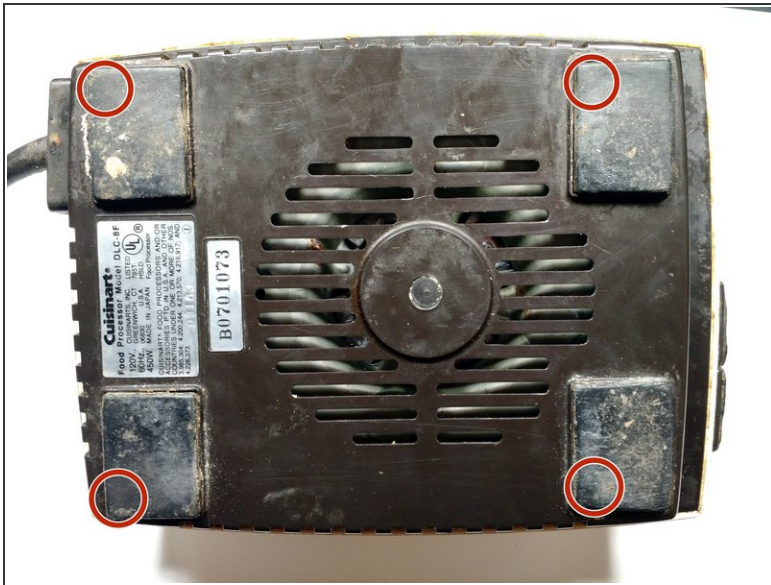
This guide teaches the user how to replace the safety switch in your Cuisinart DLC-8F. The removal of the safety switch first requires the removal of the bottom hood and all of this can be done with just a Phillips #2 screwdriver. This is an easy process and should only take about 10 minutes.



### TOOLS:

- [Phillips #2 Screwdriver](#) (1)
-

## Step 1 — Safety Switch



- Remove the four 18 mm Phillips #2 screws from the bottom by prying up the rubber feet to access the screw hole.

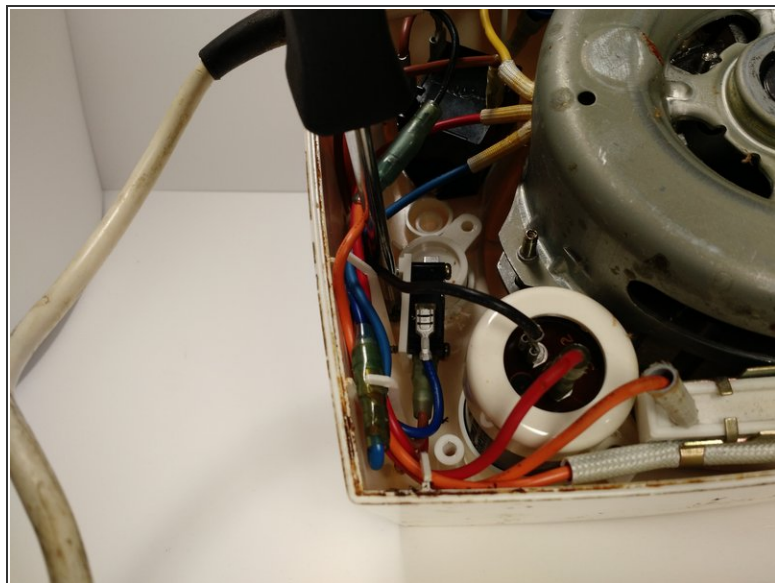
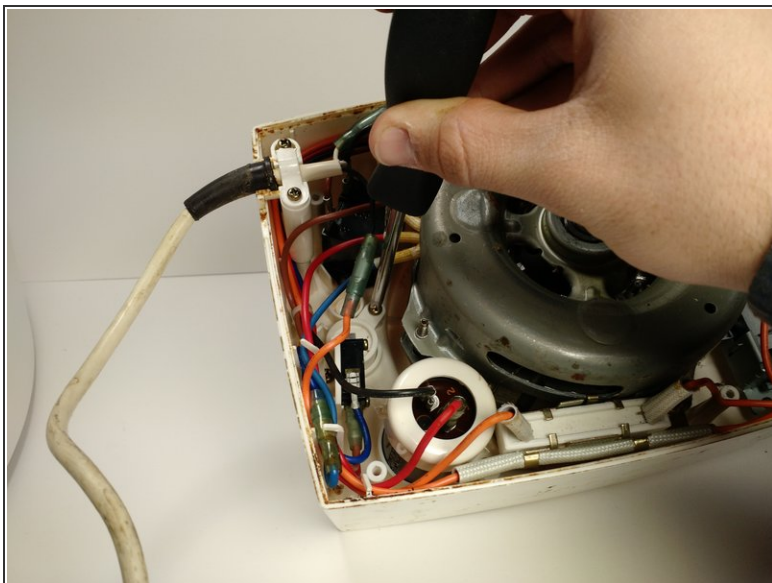
## Step 2



- Gently lift the bottom cover from the main body.

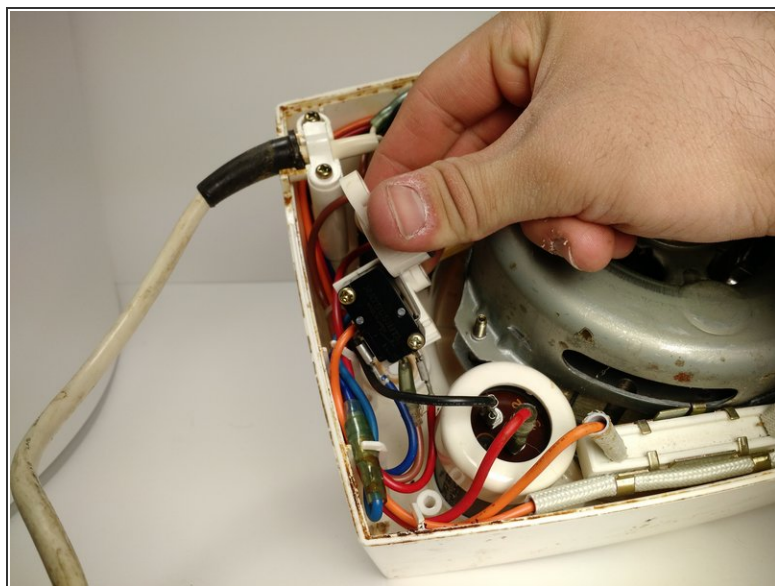
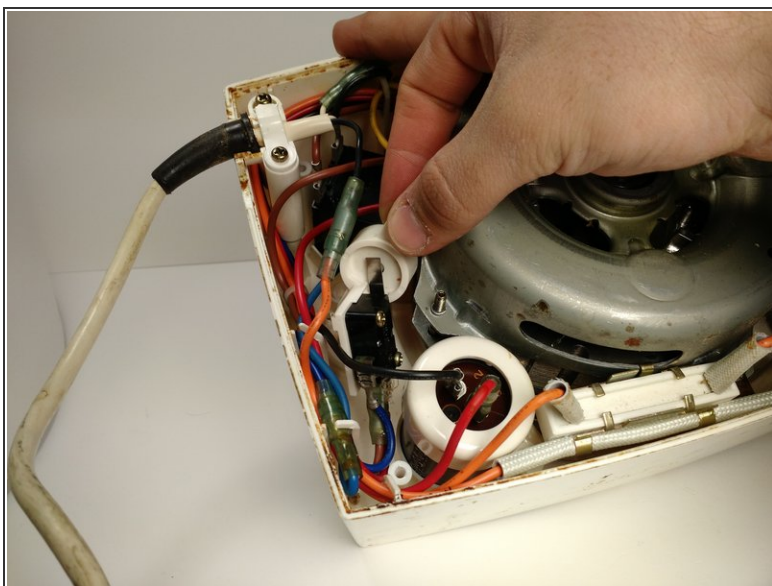


### Step 3



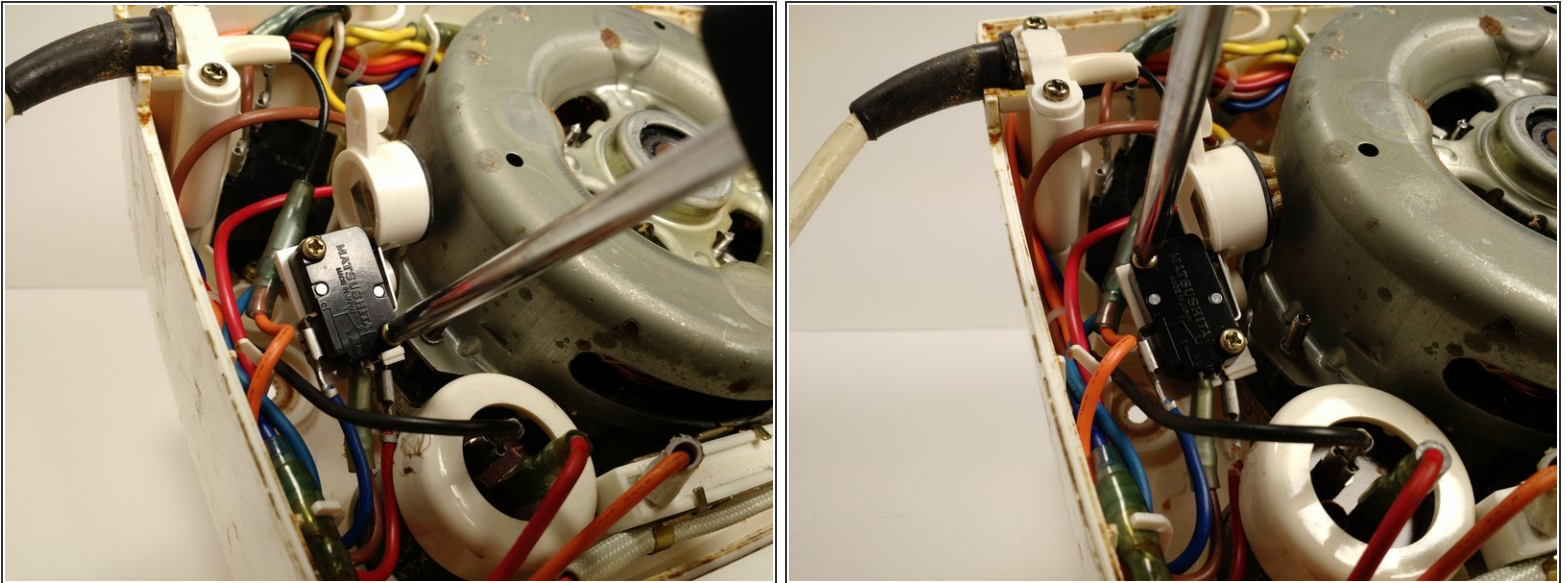
- Remove the two 14 mm Phillips #2 screws holding in the safety switch bracket.

### Step 4



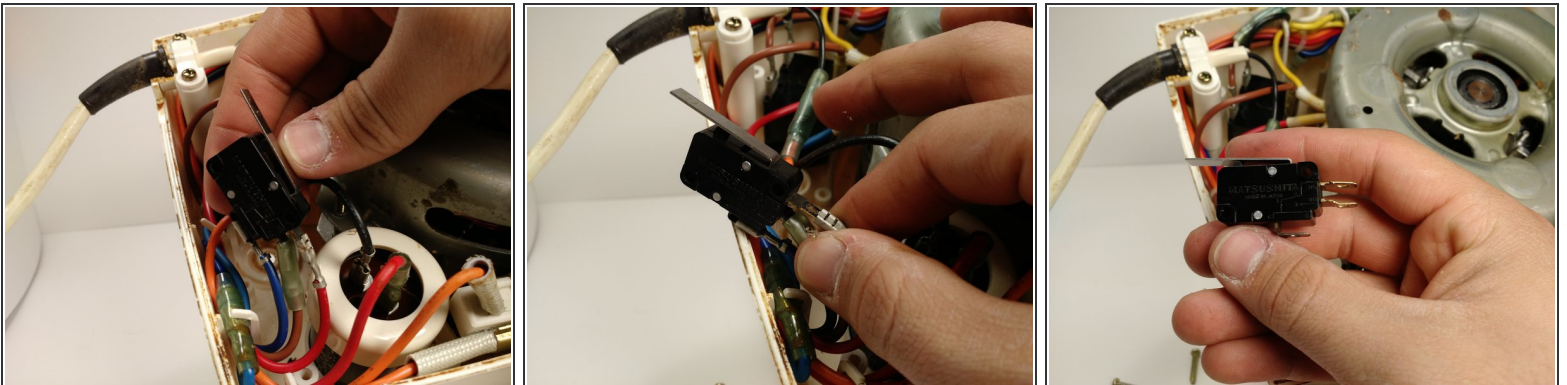
- Pull out the safety switch bracket with your hand.

## Step 5



- Remove the two 19 mm Phillips #2 screws holding the safety switch in the bracket.

## Step 6



- Pull off the three wires on the safety switch with your hand by firmly grabbing the wires at the base.

To reassemble your device, follow these instructions in reverse order.