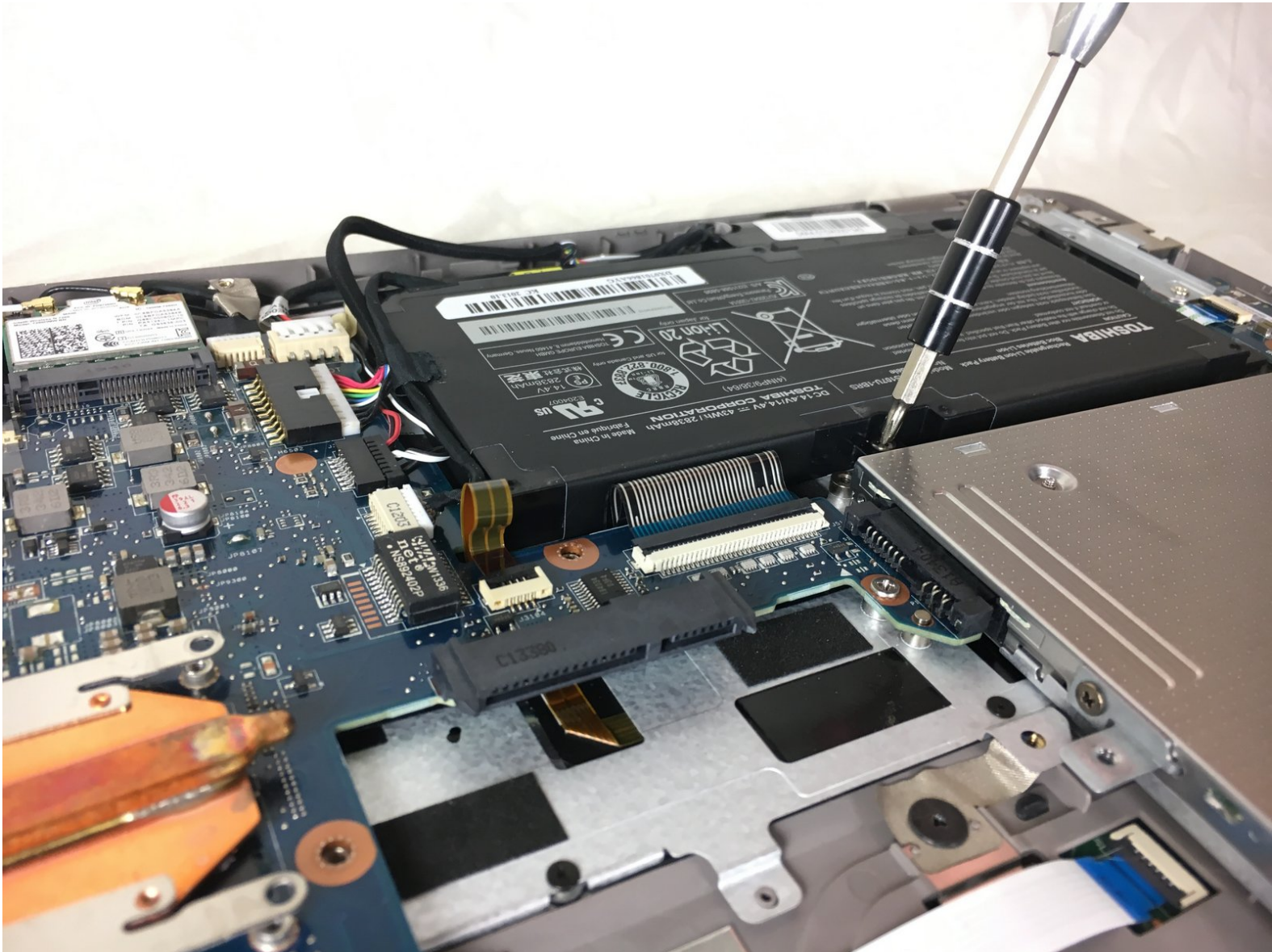




# Toshiba Satellite P55-A5312 Battery Replacement

This guide will help you replace a broken or malfunctioning battery in your laptop.

Written By: ohatae



---

## INTRODUCTION

Replacing a broken or damaged battery can increase the lifespan of your laptop and improve performance. In this guide we will show you how to replace your Toshiba Satellite battery. We will first open the back of the laptop. After, we will carefully unscrew and remove the battery for replacement.



### TOOLS:

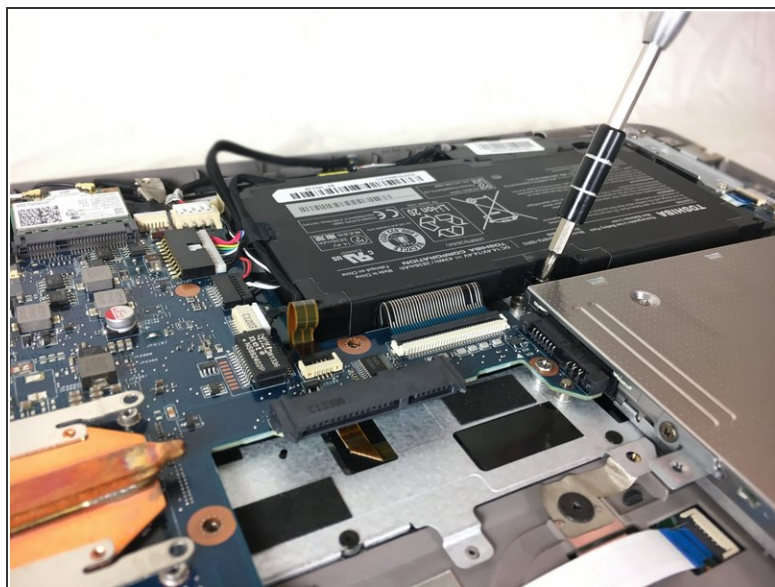
- [Phillips #00 Screwdriver](#) (1)
-

## Step 1 — Battery



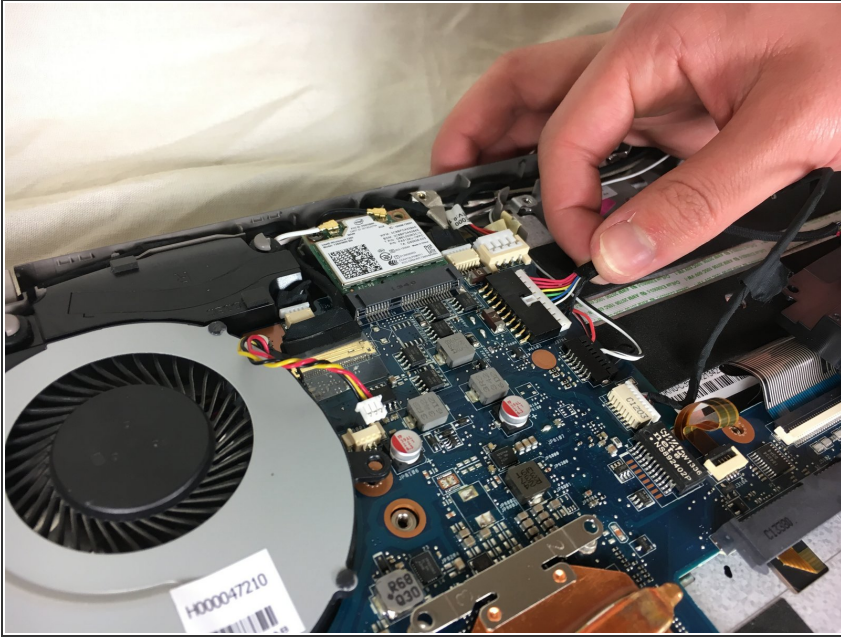
- Remove the bottom cover of your laptop. For instructions on how to do this, take a look at the [Toshiba Satellite P55-A5312 Back Cover Removal Guide](#)

## Step 2



- Locate the battery, which is in the top right hand corner of the laptop.
- Remove all the 2.5x6mm screws that secure the battery with a Philips 00 screwdriver.

### Step 3



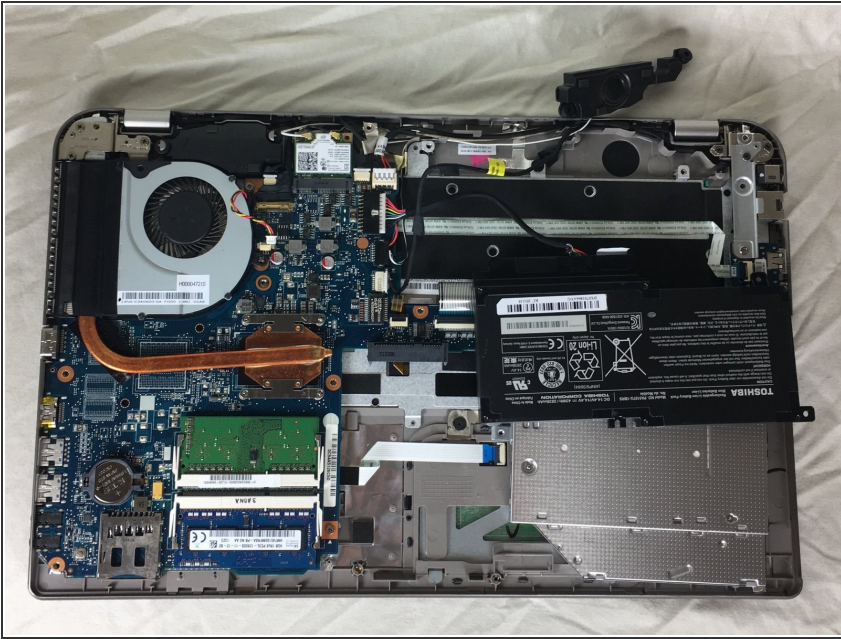
- Locate the intersection of the wires that connect the battery to the motherboard.
- Unplug these wires by gently pulling on the white plug, as shown in the picture.

### Step 4



- Carefully remove the speaker that is placed above the battery by gently pulling upward from one end. Be careful not to break a wire.
- Move the speaker elsewhere while replacing the battery (do not disconnect it).

## Step 5



- Remove the battery from the laptop after it has been completely disconnected.

To reassemble your device, follow these instructions in reverse order.