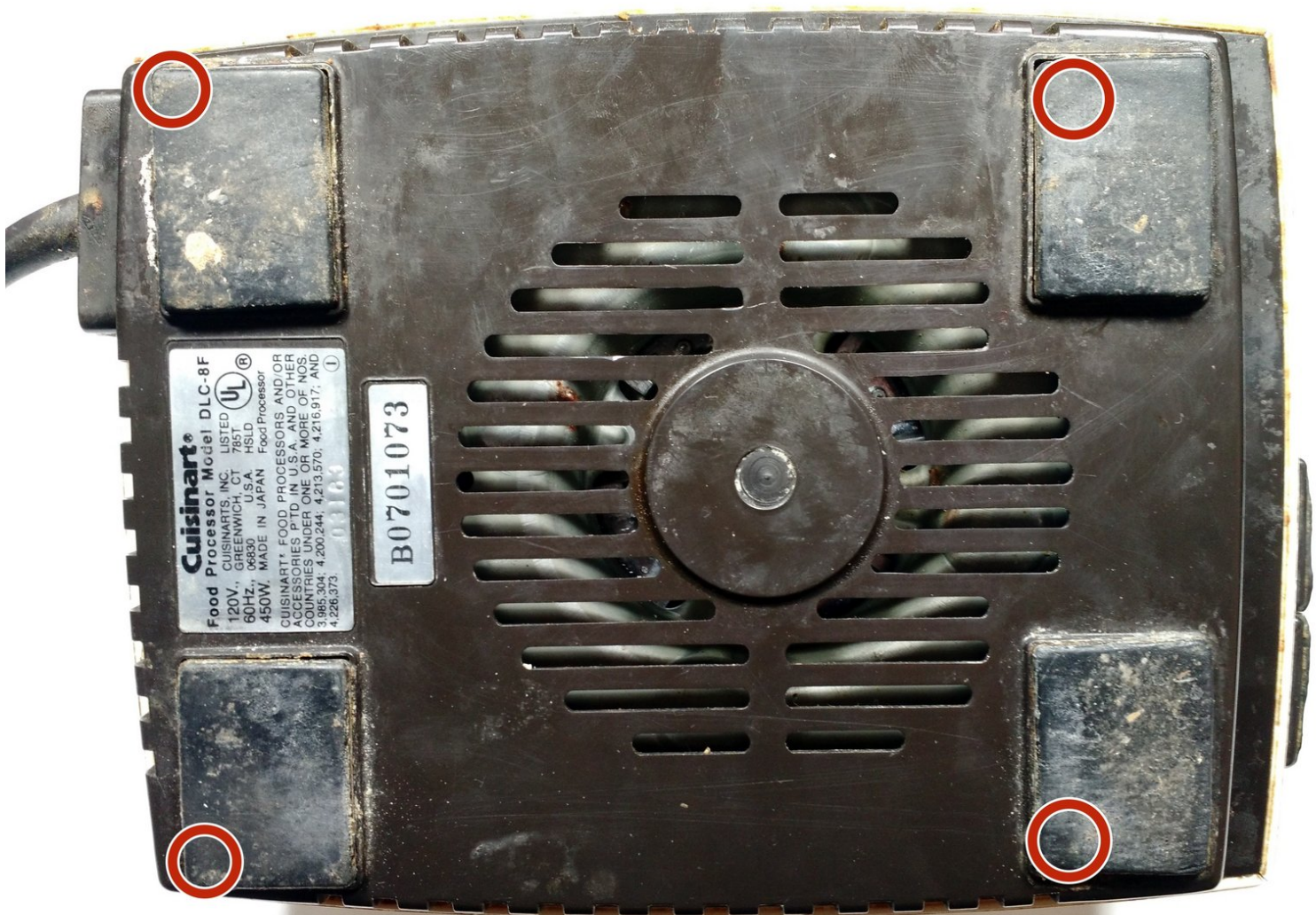




# Cuisinart DLC-8F Power Switch Assembly Replacement

Use this guide to replace the power switch assembly on your Cuisinart DLC-8F.

Written By: David Colman



## INTRODUCTION

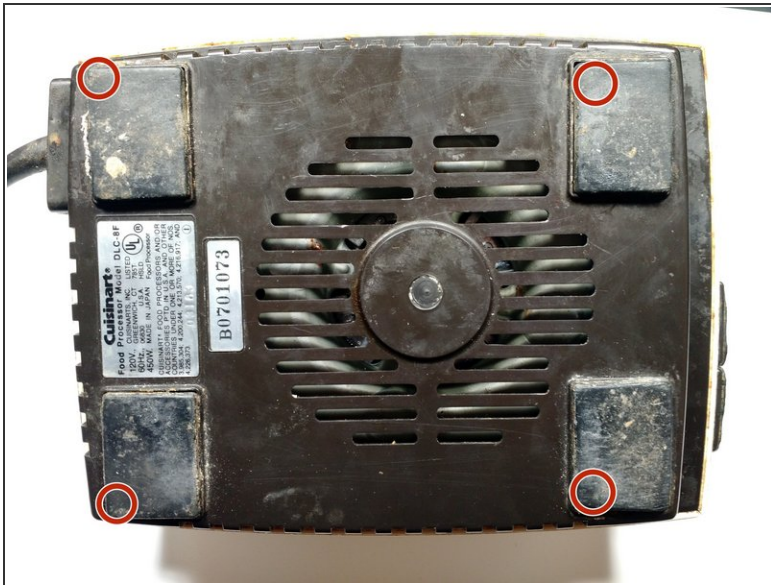
This guide teaches the user how to replace the power switch assembly in your Cuisinart DLC-8F. The removal of the power switch assembly first requires the removal of the bottom hood and all of this can be done with just a Phillips #2 screwdriver. This is an easy process and should only take about 10 minutes.



### TOOLS:

- [Phillips #2 Screwdriver](#) (1)
-

## Step 1 — Power Switch Assembly



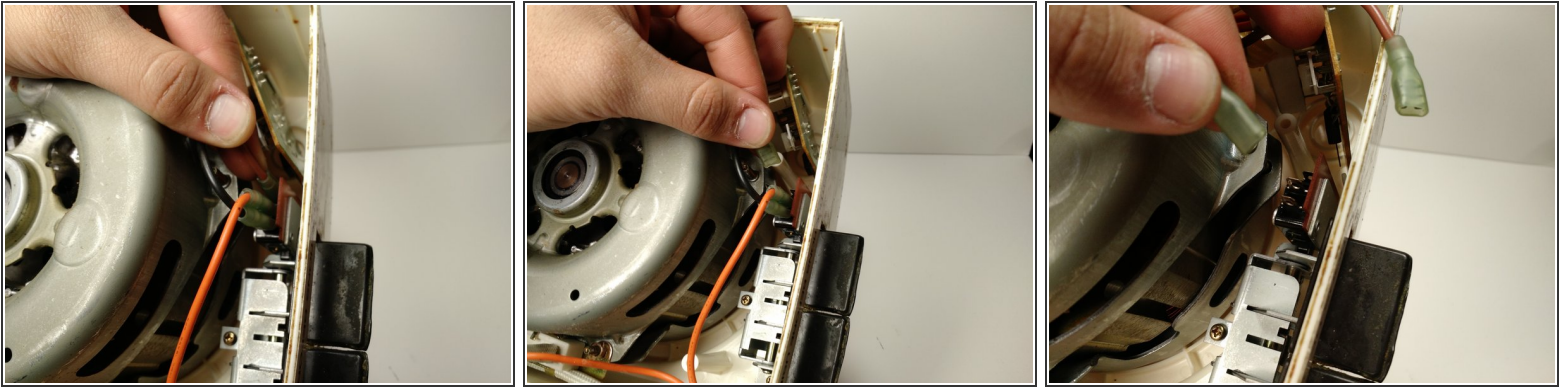
- Remove the four 18 mm Phillips #2 screws from the bottom by prying up the rubber feet to access the screw hole.

## Step 2



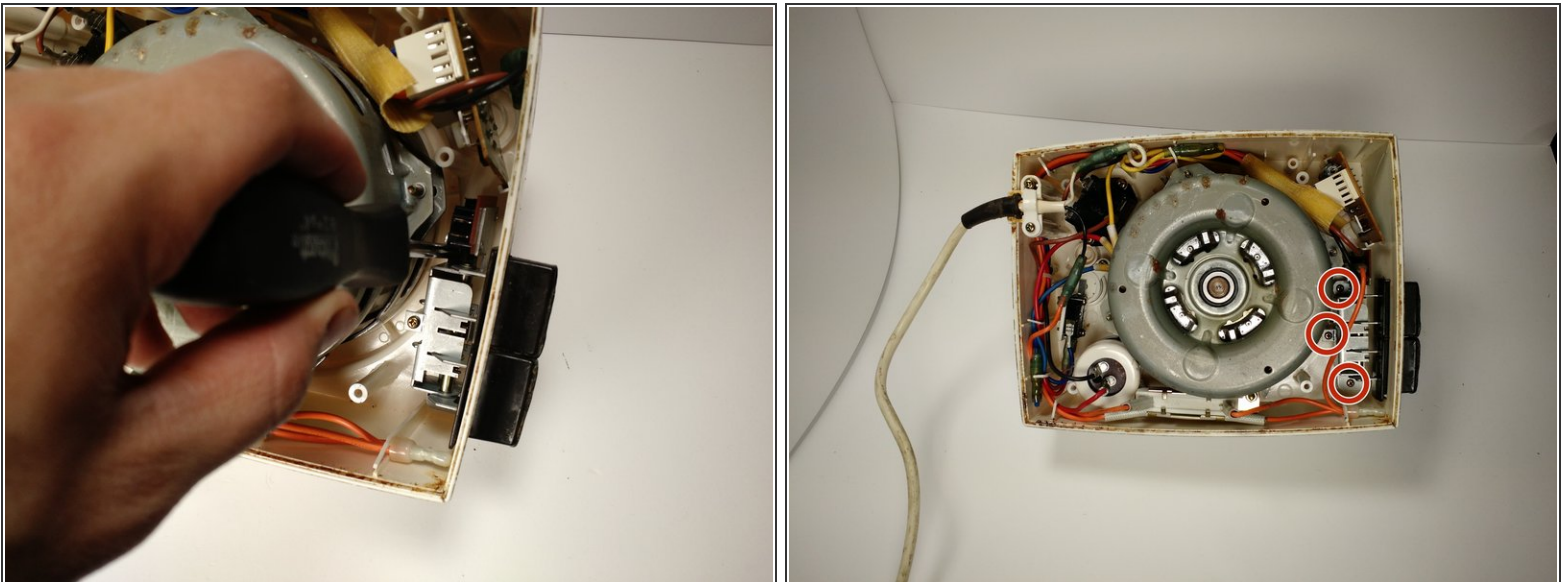
- Gently lift the bottom cover from the main body.

### Step 3



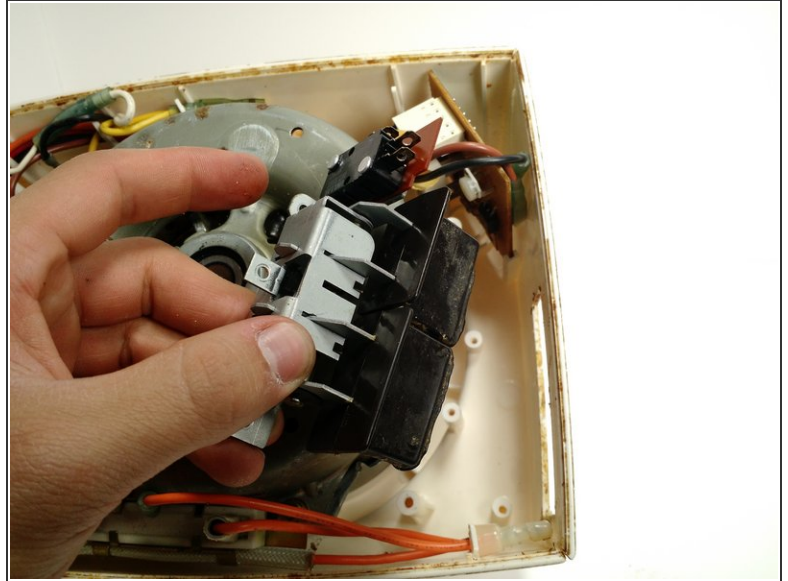
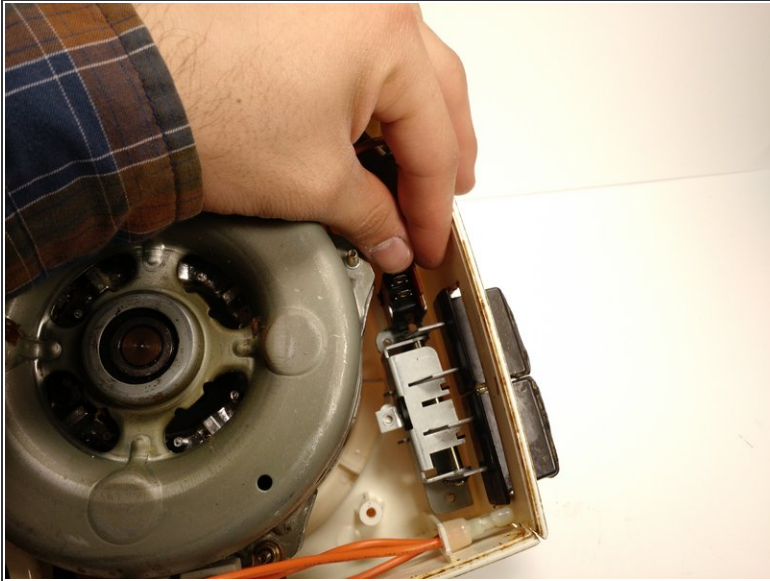
- Pull out the three wires coming out of the power switch assembly by firmly grabbing the base of the wires and pulling.

### Step 4



- Remove the three 12 mm Phillips #2 screws from the power switch assembly.

## Step 5



- Pull out the power switch assembly with your hand.
- This might take some jiggling and effort.

To reassemble your device, follow these instructions in reverse order.