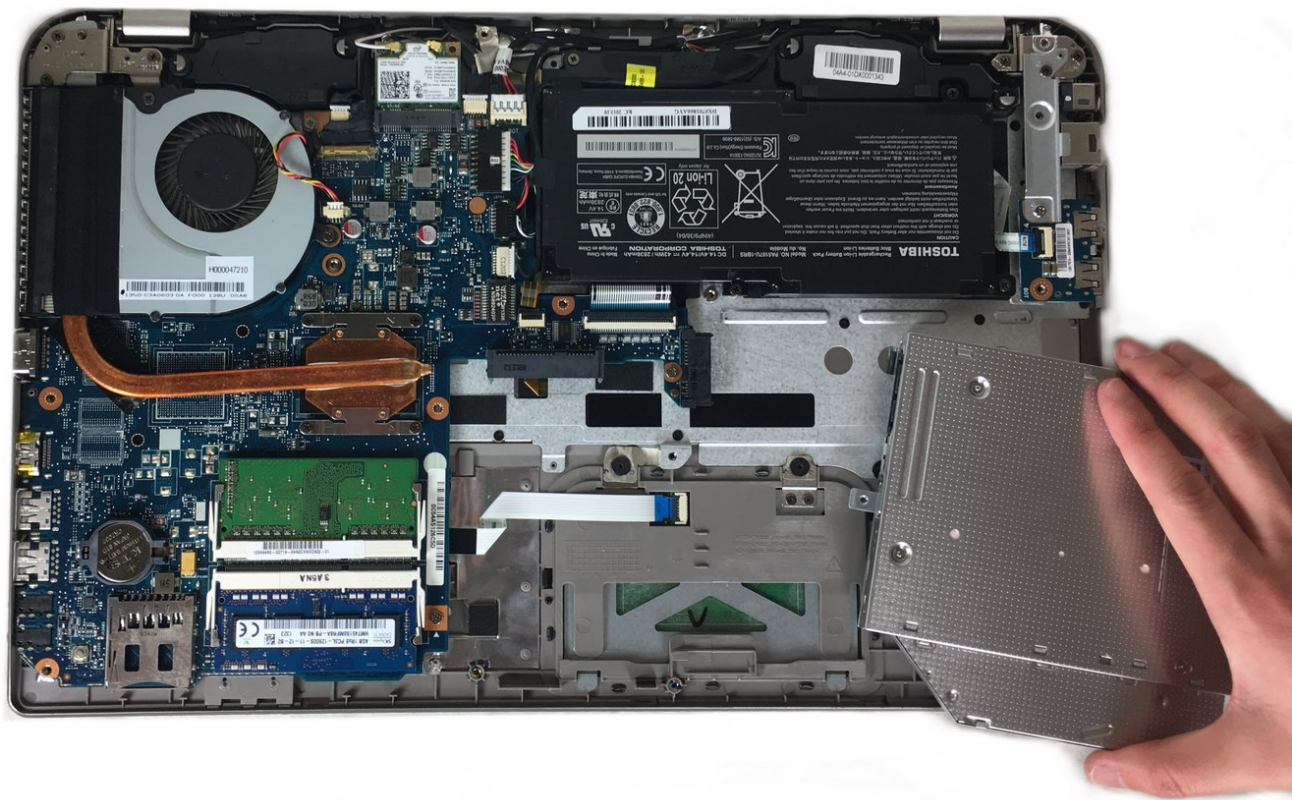




Toshiba Satellite P55-A5312 CD Drive Replacement

This guide will show you how to replace a broken or malfunctioning CD drive in your Toshiba Satellite.

Written By: ohatae



INTRODUCTION

The CD drive lets you play CD's and DVD's and you will learn how to replace a malfunctioning one with this guide. We will start by opening the back of the laptop. After, we can easily find and replace the CD drive.



TOOLS:

- [Phillips #0 Screwdriver](#) (1)
-

Step 1 — CD Drive



- Remove the bottom cover of your laptop. For instructions on how to do this, visit the [Toshiba Satellite P55-A5312 Back Cover Removal Guide](#)

Step 2



- Locate the CD drive at the lower right hand corner of the laptop.
- Unscrew any screws that are holding the drive in place. However, there should only be one. The other screws holding the drive in place are also responsible for holding the bottom casing.

Step 3



- Carefully remove the CD drive by pulling it from its connection to the motherboard.
- Replace it by inserting a new CD drive and replacing any screws you have removed.

To reassemble your device, follow these instructions in reverse order.