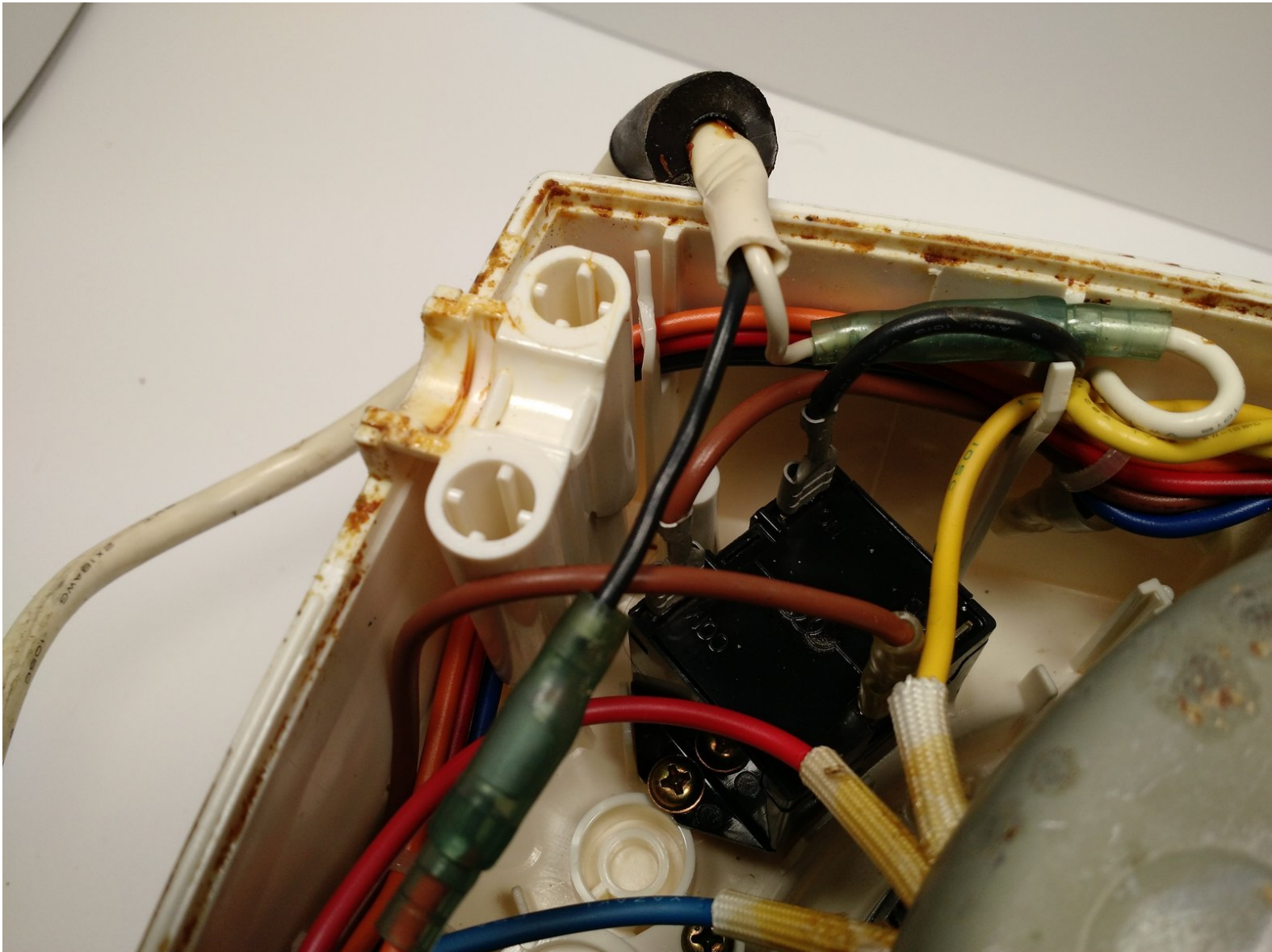




Cuisinart DLC-8F Automatic Circuit Breaker Replacement

Use this guide to replace the automatic circuit breaker in your Cuisinart DLC-8F

Written By: David Colman



INTRODUCTION

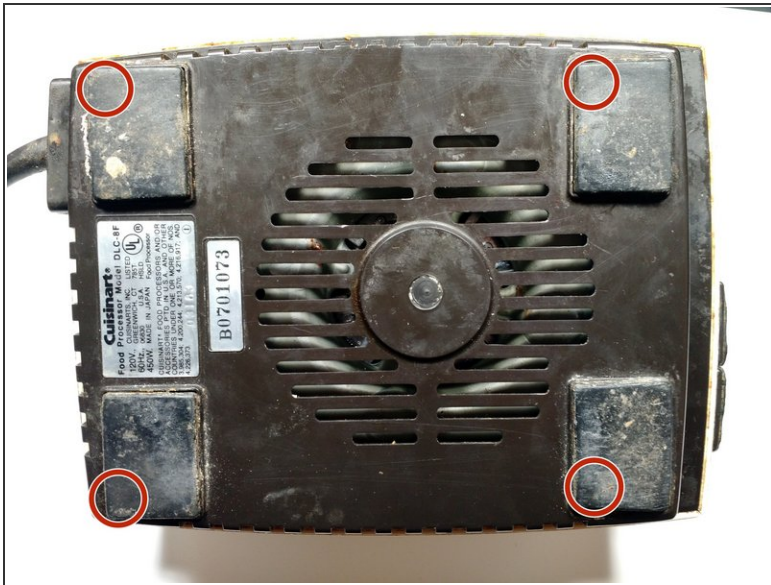
This guide teaches the user how to replace the automatic circuit breaker in your Cuisinart DLC-8F. The removal of the automatic circuit breaker first requires the removal of the power cable and all of this can be done with just a Phillips #2 screwdriver. This is an easy process and should only take 15 minutes.



TOOLS:

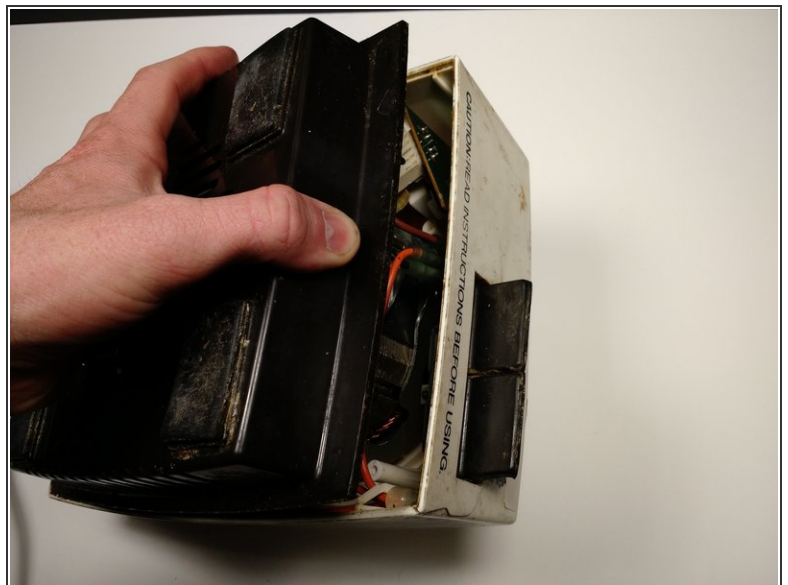
- [Phillips #2 Screwdriver](#) (1)
-

Step 1 — Power Cable



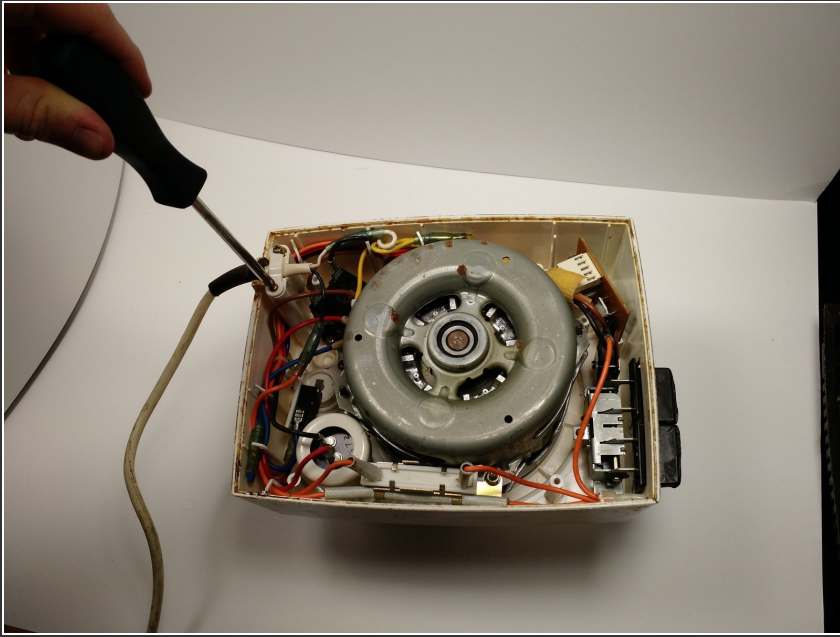
- Remove the four 18 mm Phillips #2 screws from the bottom by prying up the rubber feet to access the screw hole.

Step 2



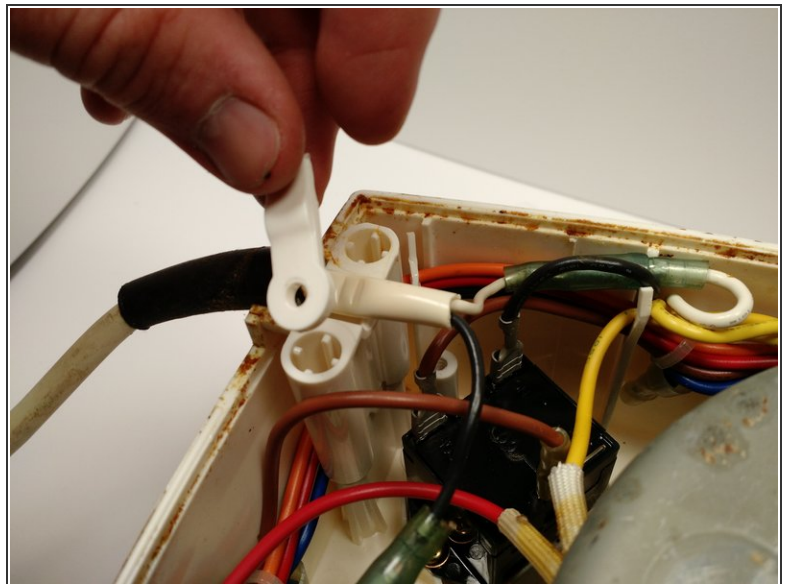
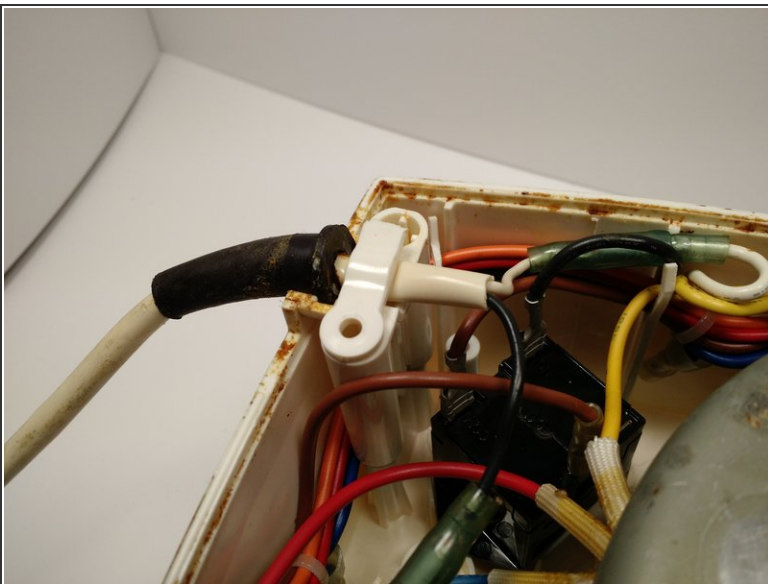
- Gently lift the bottom cover from the main body.

Step 3



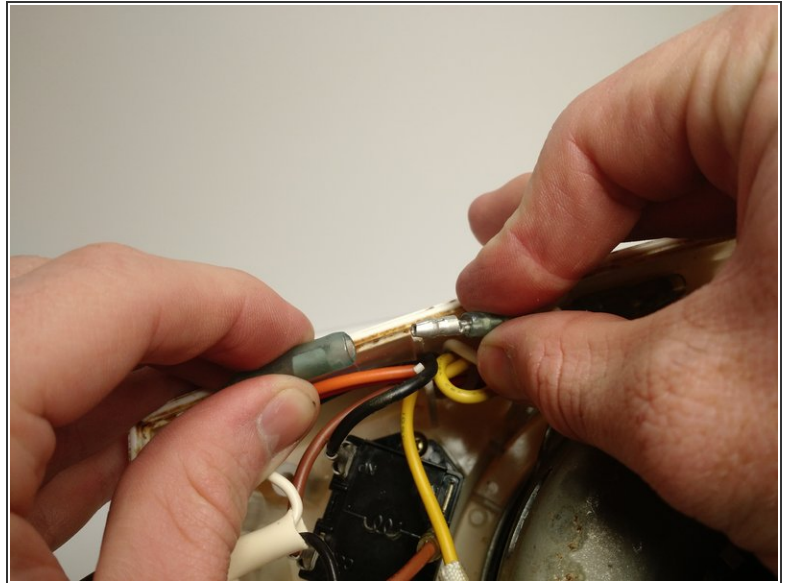
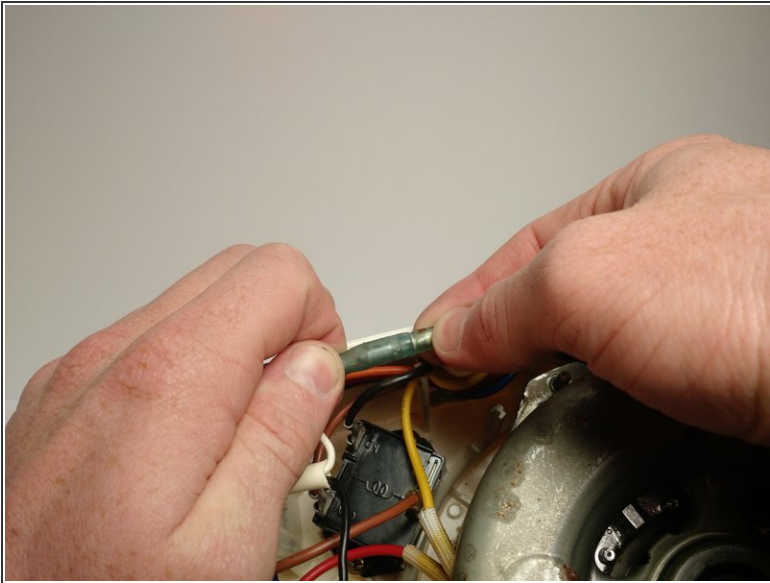
- Remove the two 62 mm Phillips #2 screws from the cable retaining clip.

Step 4



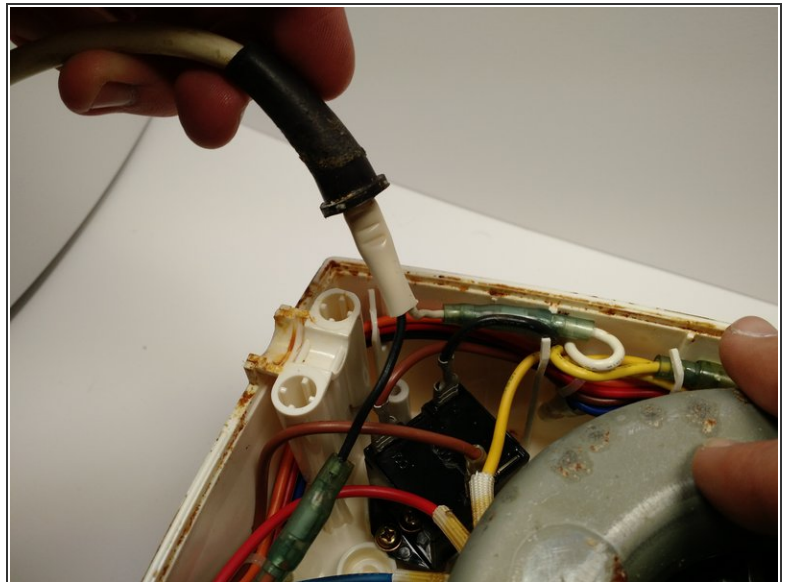
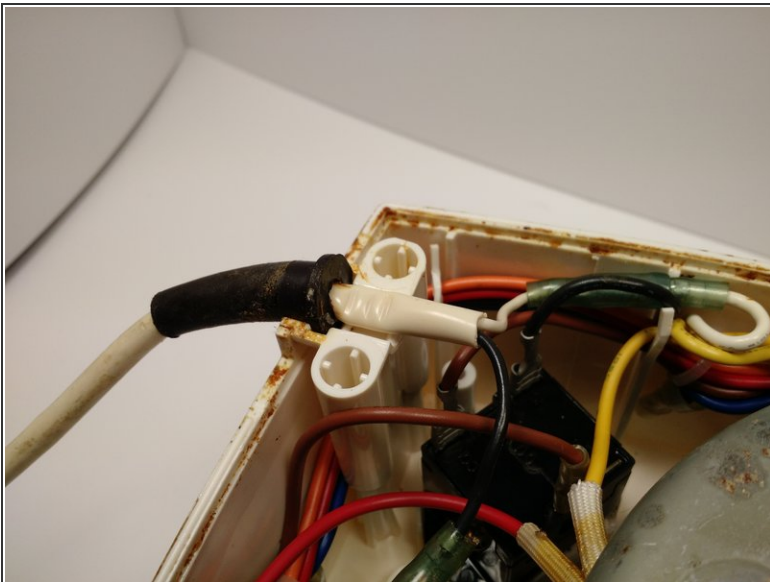
- Lift off the cable retaining

Step 5



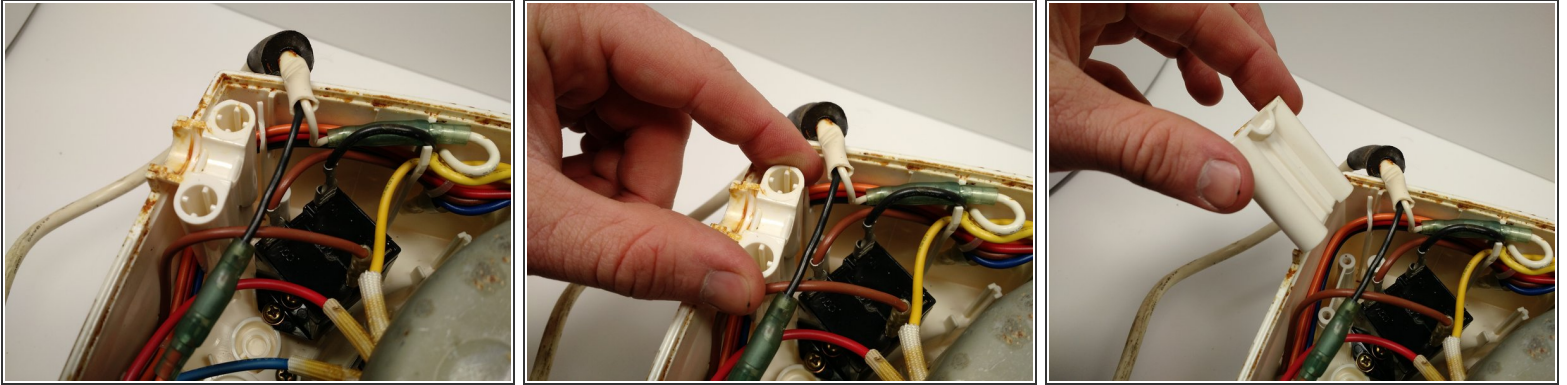
- Pull apart the two wires of the power cable at their connections as shown.

Step 6



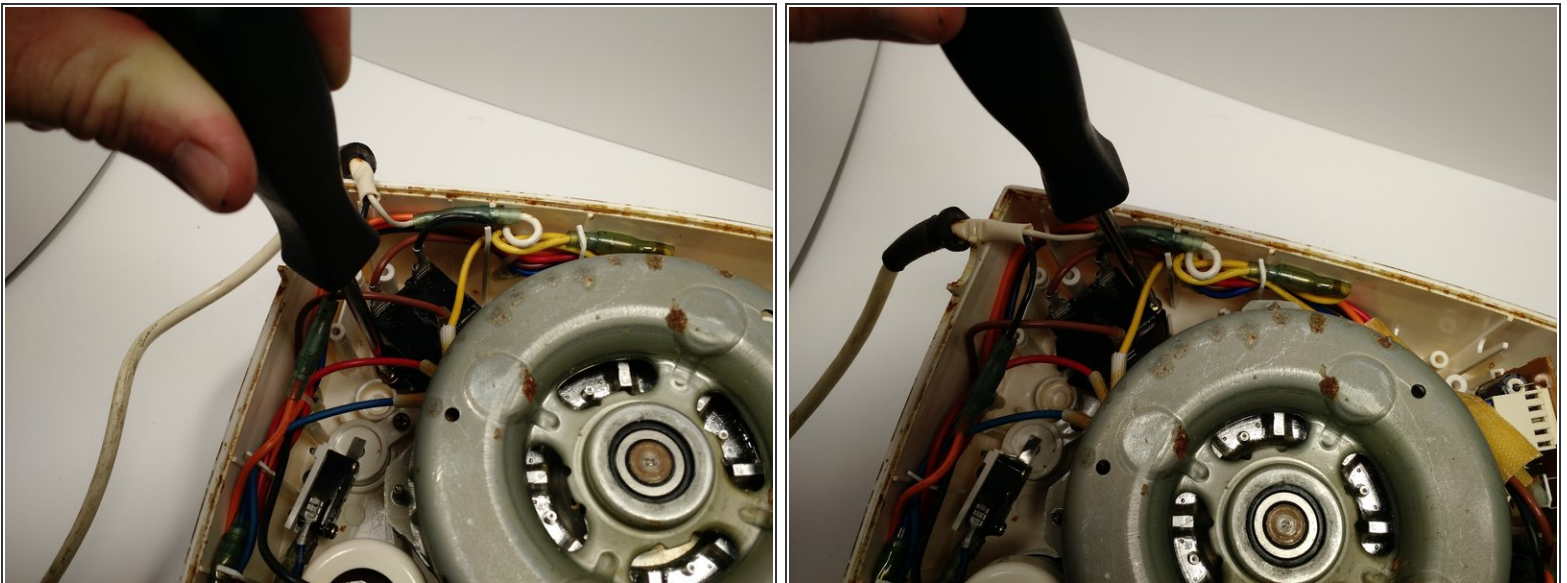
- Lift out the cable.

Step 7 — Automatic Circuit Breaker



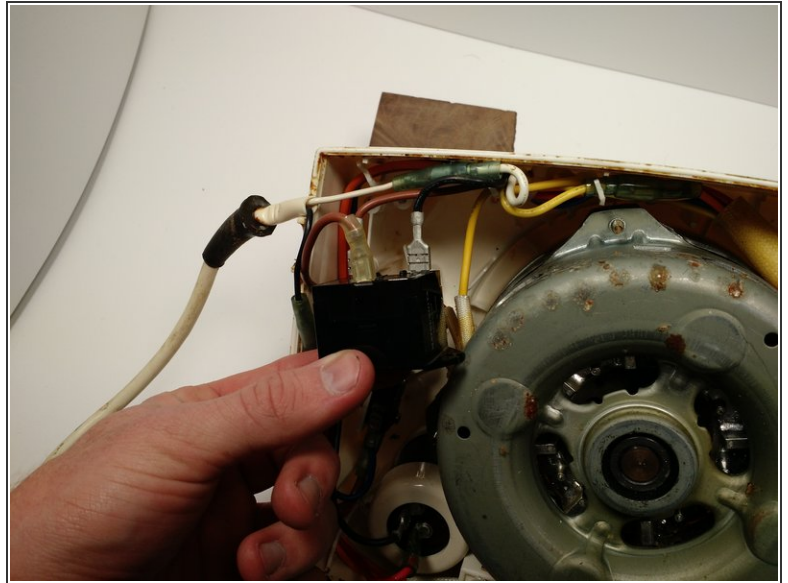
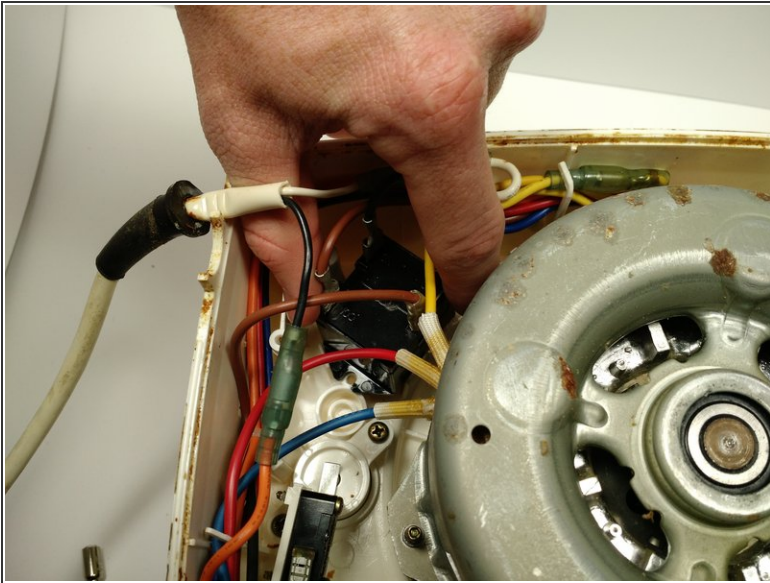
- Pull out the power cable screw stand with your hand.

Step 8



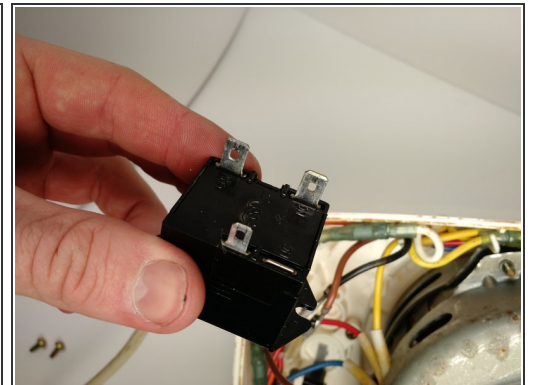
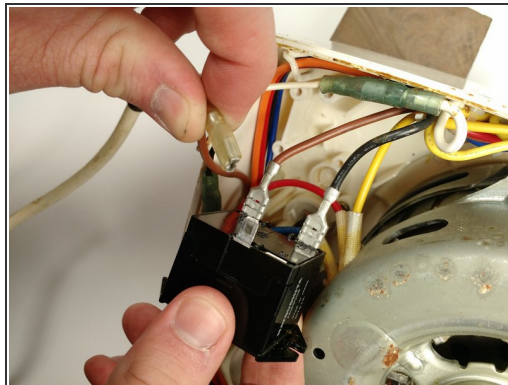
- Remove the two 15 mm Phillips #2 screws on the automatic circuit breaker.

Step 9



- Pull out the automatic circuit breaker with your hand.

Step 10



- Pull off the three wires by grabbing from the base of the wire.

To reassemble your device, follow these instructions in reverse order.