



Hamilton Beach 70740 Gears Replacement

Replacement of the drive gears to allow power transfer to blades.

Written By: Angel



INTRODUCTION

Replacement of the drive gears. Do not remove grease as it helps the gears move smoothly.



TOOLS:

- [Heavy-Duty Spudger](#) (1)
 - [Phillips #2 Screwdriver](#) (1)
-

Step 1 — Bowl and Lid



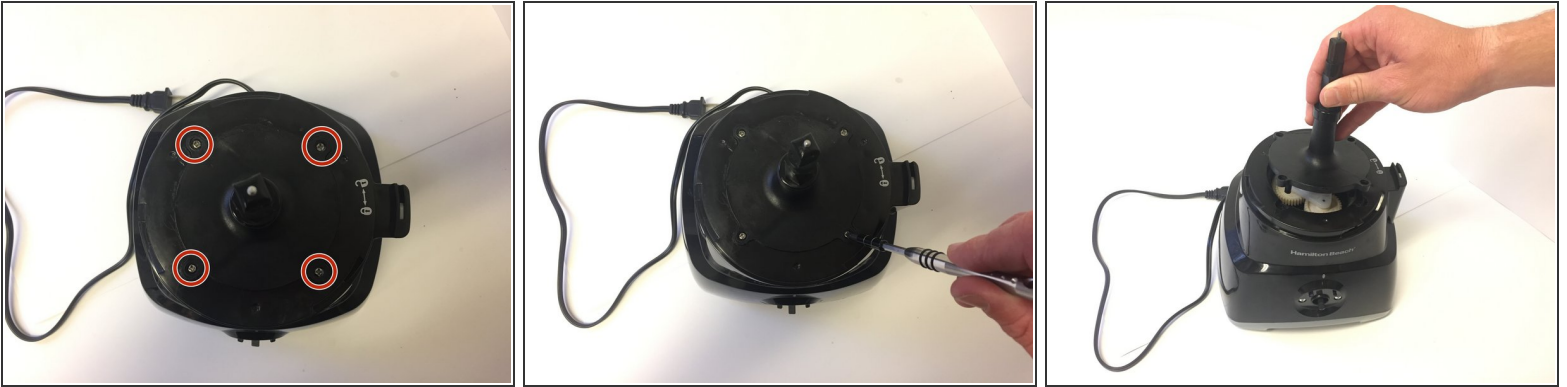
- Turn the bowl counterclockwise and lift.

Step 2 — Gears



- Use the nylon spudger to remove the plastic screw covers.

Step 3



- Using a #2 Phillips head screwdriver, remove the four 10 mm screws and pull the shaft straight upwards to uncover gears.

Step 4



- Firmly grasp center piece of gear mechanism and pull straight upward.

To reassemble your device, follow these instructions in reverse order.