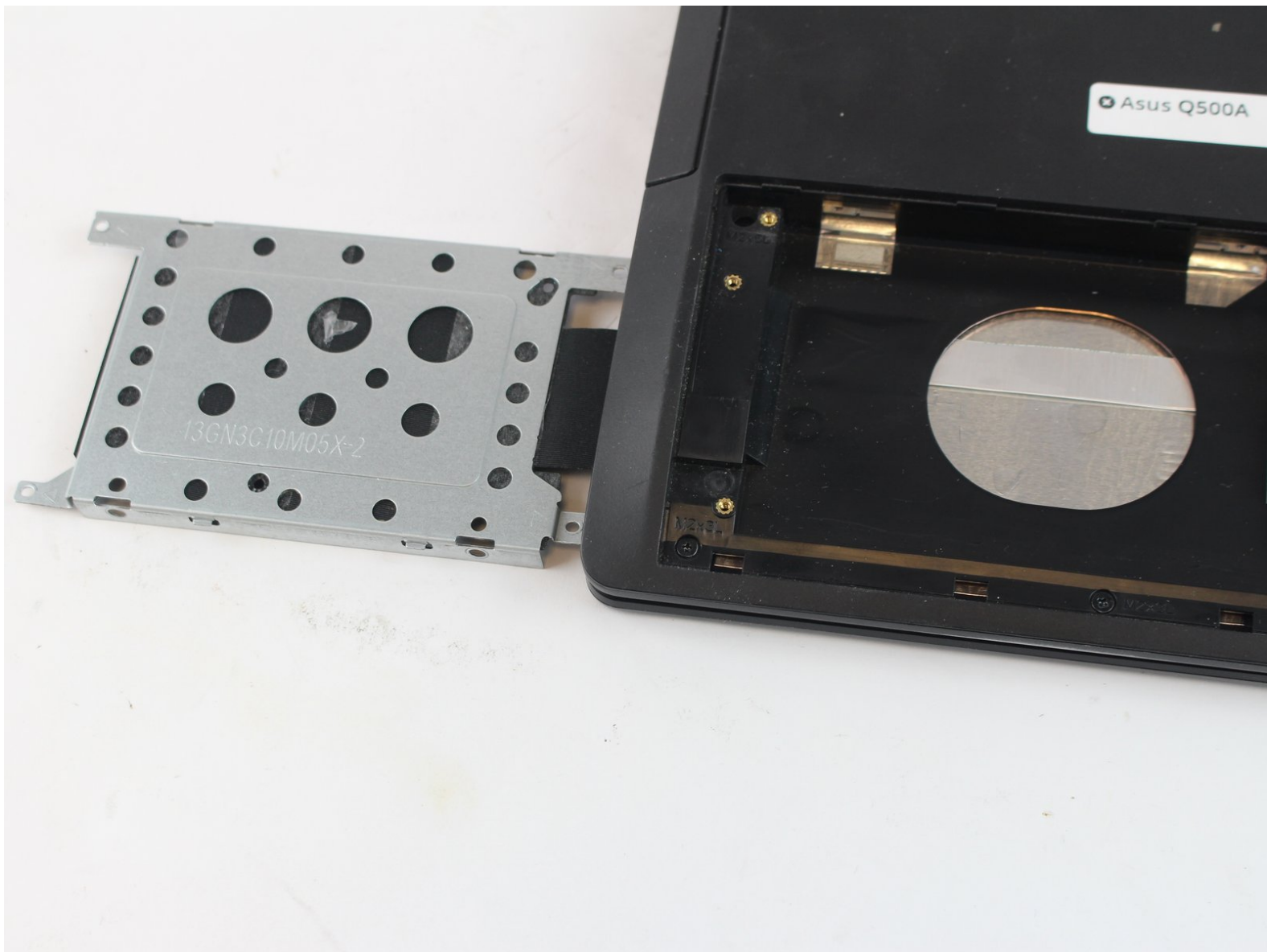




Asus Q500A Hard Drive Replacement

This guide will demonstrate how to replace the hard drive on the Asus Q500A.

Written By: cameron



INTRODUCTION

This guide will demonstrate how to replace the hard drive on the Asus Q500A.



TOOLS:

- [JIS Driver Set](#) (1)



PARTS:

- [1 TB SSD / Upgrade Bundle](#) (1)

Step 1 — Hard Drive



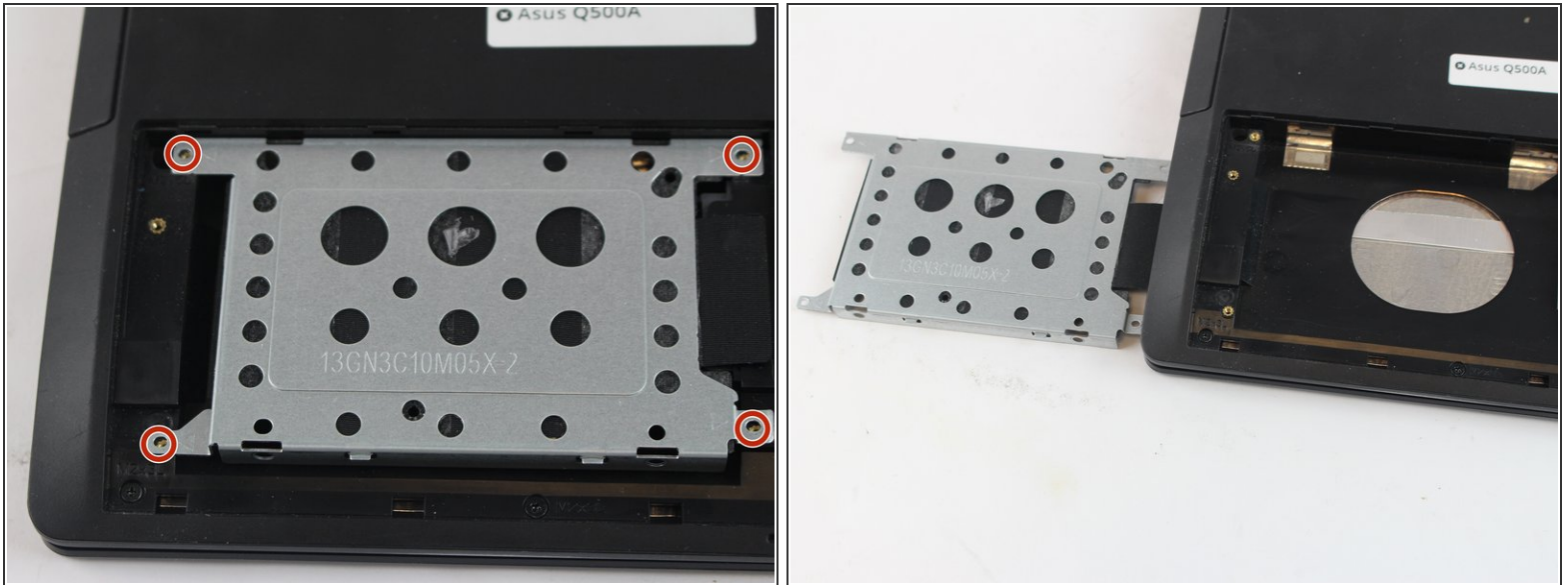
- Flip device onto backside

Step 2



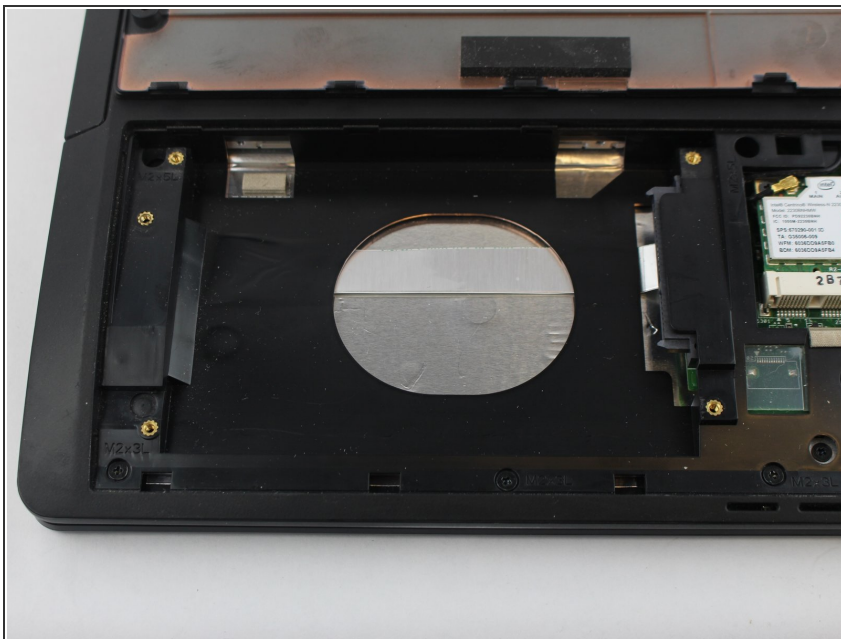
- Use a J0 screwdriver bit to remove both screws on the back-plate, found at the bottom of device.
- Remove back-plate.
- Note: Use prying tool if your having issues lifting back-plate.

Step 3



- Remove 4 screws from the metal hard-drive case. There will be one in each corner.
- Remove the hard-drive case from the device.

Step 4



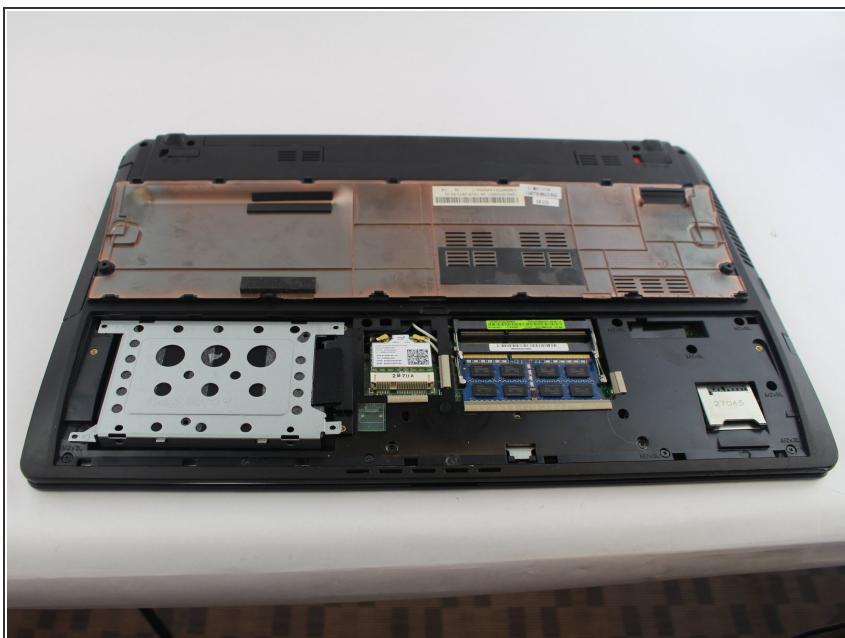
- Remove the hard-drive. It will be connected to the integrated sata-port in the device.

Step 5



- Place hard-drive into slot and connect to the integrated sata port.
- Place hard drive case back on top of the new hard-drive.
- Screw in the four screws on the hard-drive case.

Step 6



- Place back-plate back on device.
- Screw in the 2 screws on the back of the plate.

To reassemble your device, follow these instructions in reverse order.