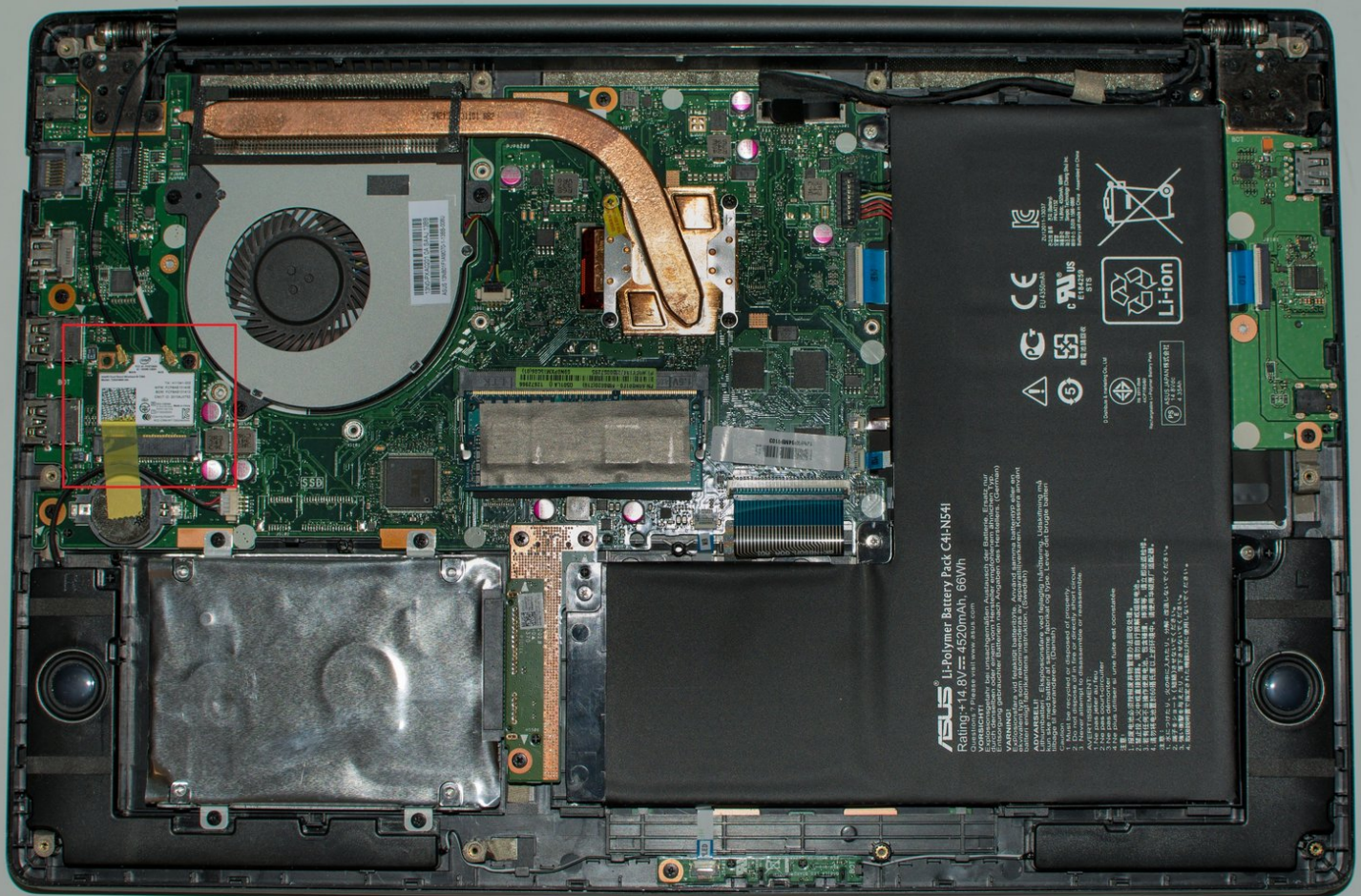




# Asus Q501LA-BBI6T03 Wireless Card Replacement

If you are having trouble connecting to the internet and find that your wireless card is faulty, this guide will help you replace it.

Written By: Aodhan Arias



## INTRODUCTION

If you are having difficulties connecting to the internet and find that your wireless card is affecting your connectivity, this guide will help you in replacing the wireless-n card.



### TOOLS:

- [Phillips #0 Screwdriver](#) (1)
- [iFixit Opening Tools](#) (1)




### PARTS:

- [Asus Q501LA-BBI5T03 Wireless-n Card](#) (1)

## Step 1 — Back Panel



 Ensure the laptop is powered down before continuing.

- Use a Phillips #0 screwdriver to remove the ten 3mm Phillips head screws on the base of the laptop.

## Step 2



- Use the spudger to pry open the rear cover at either hinge.



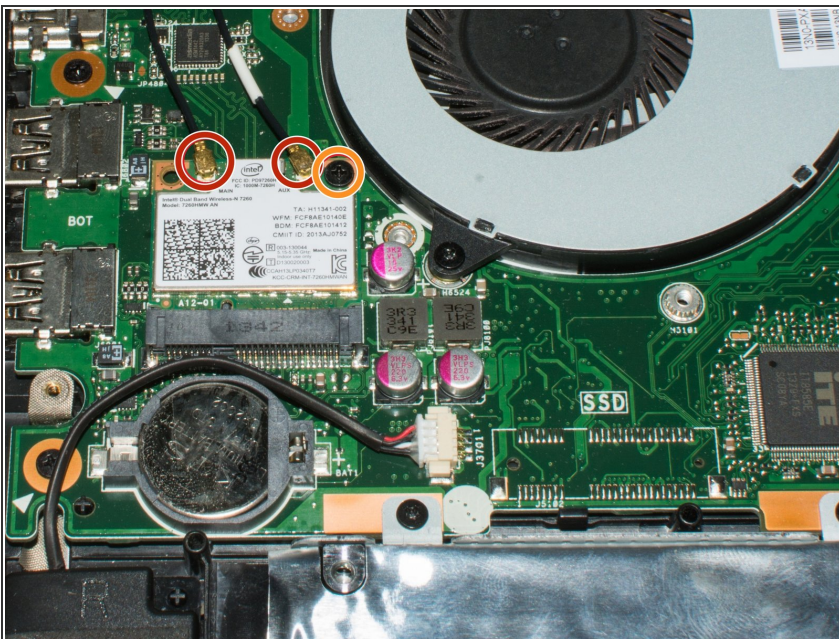
### Step 3



- Grab the cover with your fingers and gently lift it away from the board.

**i** Be careful not to break any tabs on the cover when lifting it off.

### Step 4 — Wireless Card



- Pull up on the two metal tabs attached to the card .
- Unscrew the single 2mm Phillips #0 screw in the top right hand corner.

## Step 5



- Gently slide the card out of its connection ports.
- ⚠ Make sure to pull straight out of the connection ports to avoid bending of the card or port.

Once finished, follow prerequisite guide in reverse order to finish your repair.