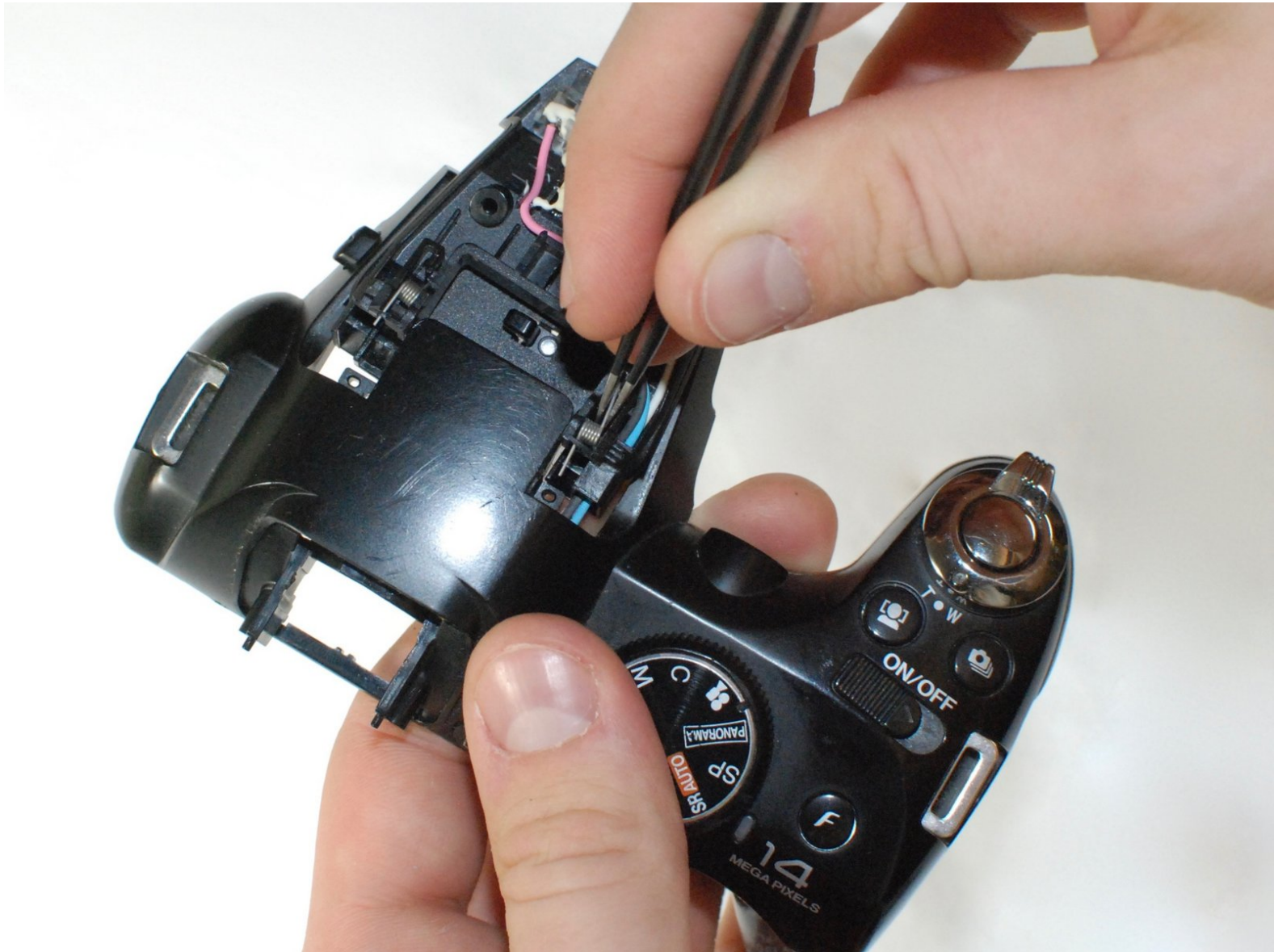




FujiFilm FinePix S4500 Flash Springs Replacement

Follow these steps to remove the flash springs.

Written By: Vicente Rios



INTRODUCTION

The springs in your flash mechanism may break or become worn out. If this happens, follow these steps to replace them.

TOOLS:

- [iFixit Opening Tools](#) (1)
 - [Tweezers](#) (1)
 - [Phillips #1 Screwdriver](#) (1)
-

Step 1 — LCD



- Remove the two 3.5 mm Phillips #1 screws in these positions on the left side of the camera with a screwdriver.

Step 2



- Remove the three 3.5 mm Phillips #1 screws in these locations on the bottom of the camera with a screwdriver.

Step 3



- Remove the four 3.5 mm Phillips #1 screws in these positions on the right side of the camera with a screwdriver.

Step 4



- Use a plastic opening tool to separate the back panel from the camera on the left side.

Step 5



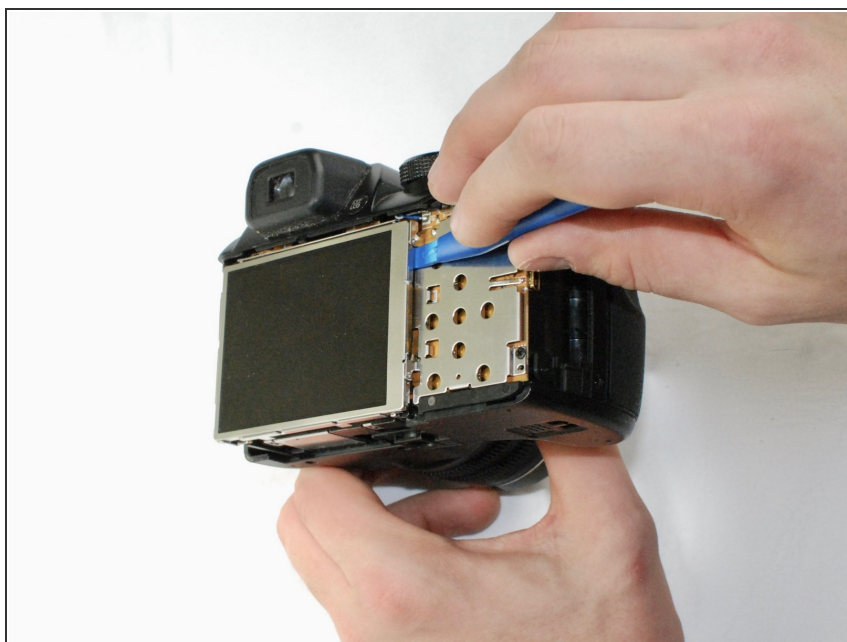
- Use a plastic opening tool to separate the back panel from the camera on the bottom.

Step 6



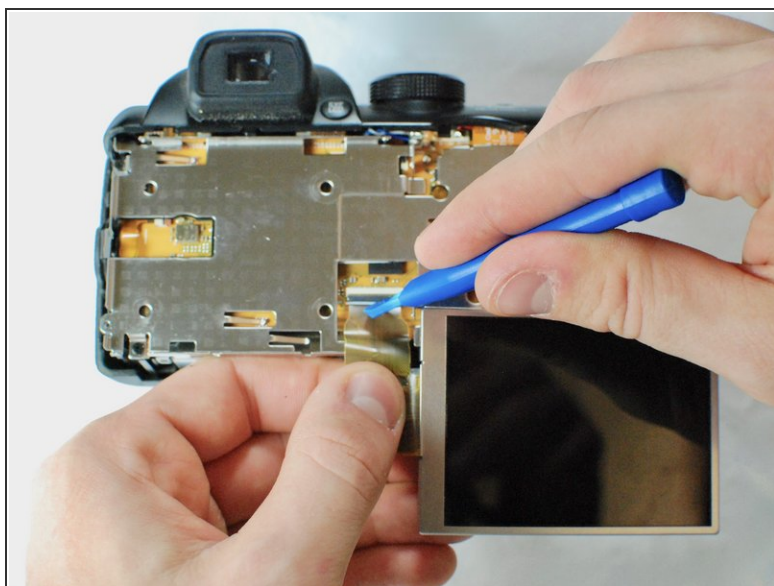
- Use a plastic opening tool to separate the back panel from the camera on the left side, then remove the back panel from the camera.

Step 7



- Use a plastic opening tool to separate the LCD screen from the camera.

Step 8



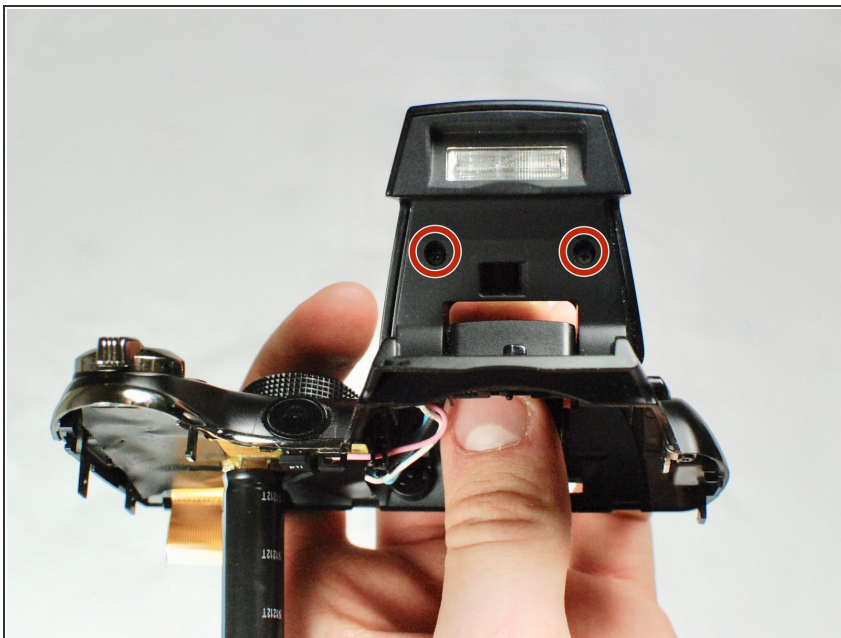
- Flip up the black tab holding the LCD ribbon wire in place and remove wire.

Step 9 — Flash Springs



- Remove the 3.5 mm Phillips #1 screws holding the top to allow access to the flash mechanism.

Step 10



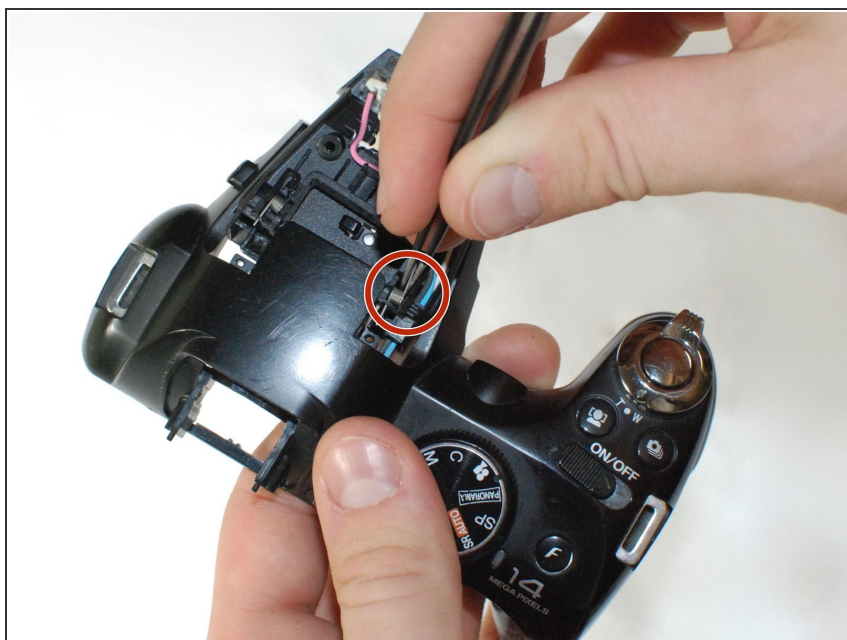
- Remove the top and use a screwdriver to remove the highlighted 2.7 mm Phillips #1 screws.
- Remove the top cover of the flash.

Step 11



- Remove the pins holding the flash mechanism in place. Tweezers may be required.

Step 12



- Use a pair of tweezers to remove the flash mechanism springs , then replace with the new springs.

To reassemble your device, follow these instructions in reverse order.