

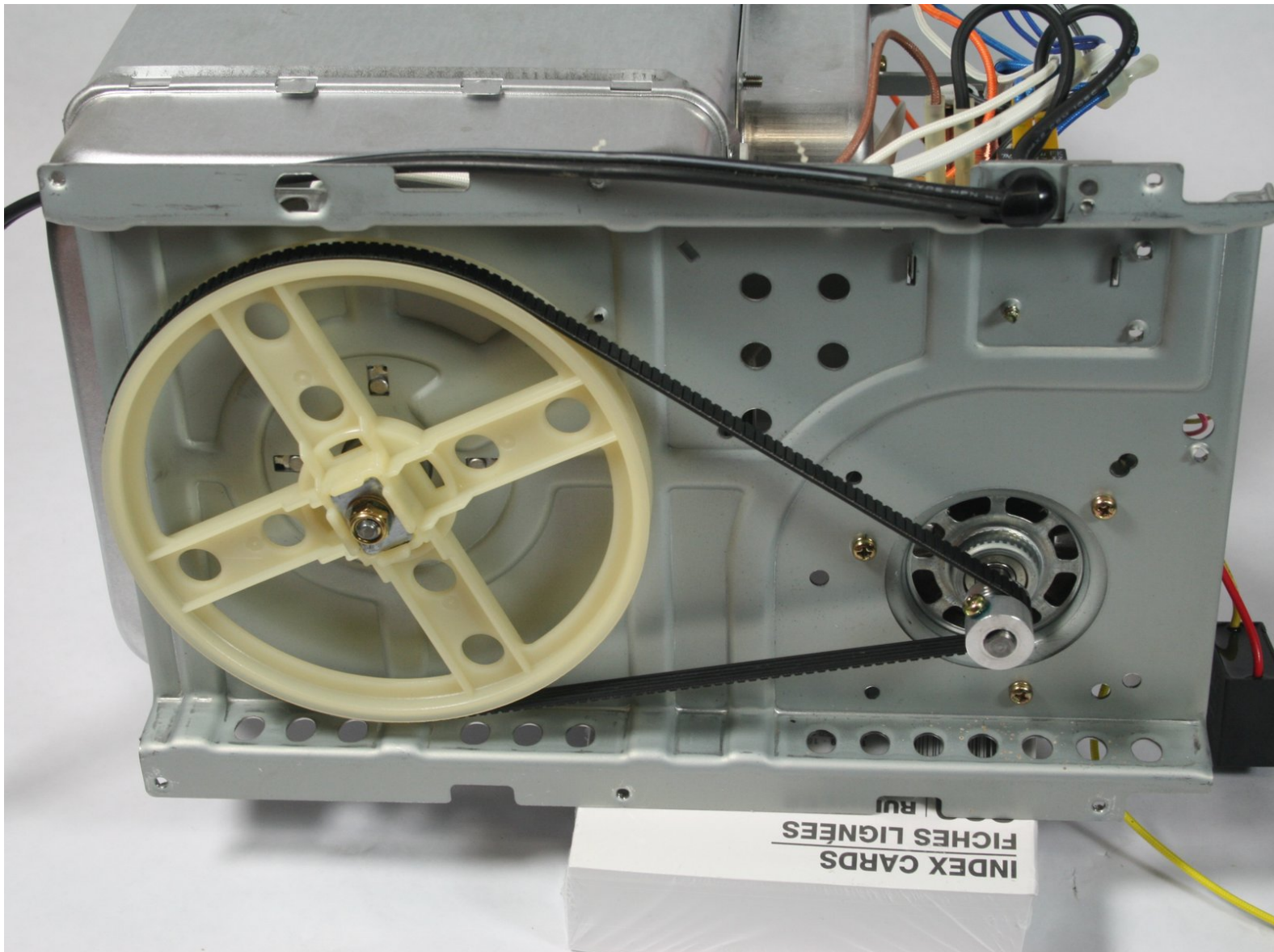


Hitachi HB-B102 Automatic Home Bakery II

Belt Replacement

This guide will illustrate how to remove, and reinstall a new mixing paddle drive belt.

Written By: Mike



INTRODUCTION

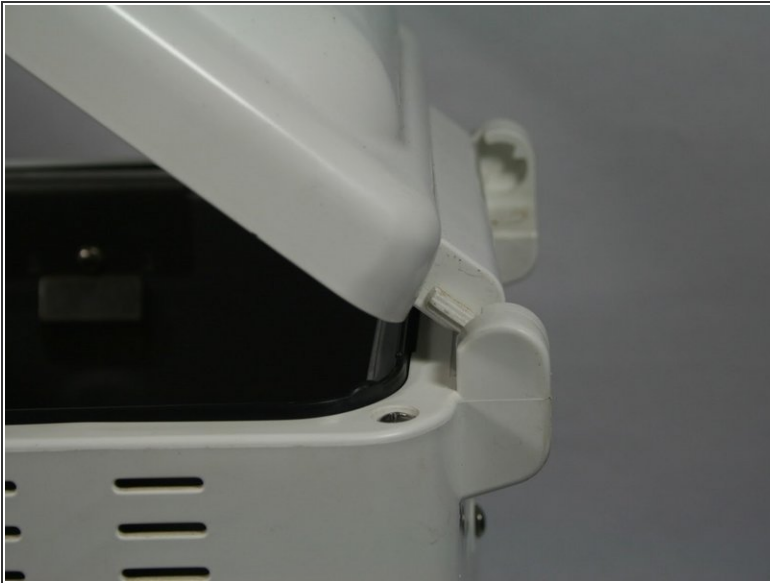
The mixing paddle drive belt is turned by the motor and in turn, turns the mixing paddle axel (...bad pun). After prolonged or improper use, the belt can become stretched or even break. This guide will show you how to remove and replace the belt on your machine.



TOOLS:

- [Phillips #2 Screwdriver](#) (1)
 - [Metal Spudger](#) (1)
-

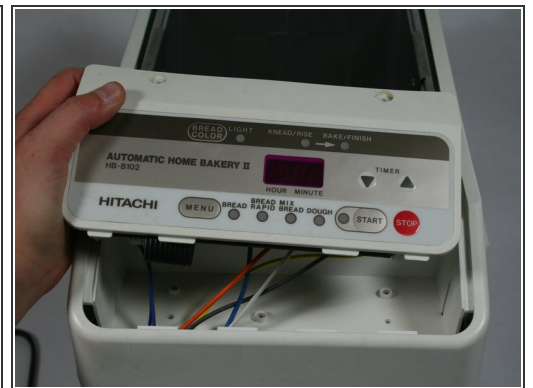
Step 1 — Outer Casing



⚠ Make sure to unplug the device before starting.

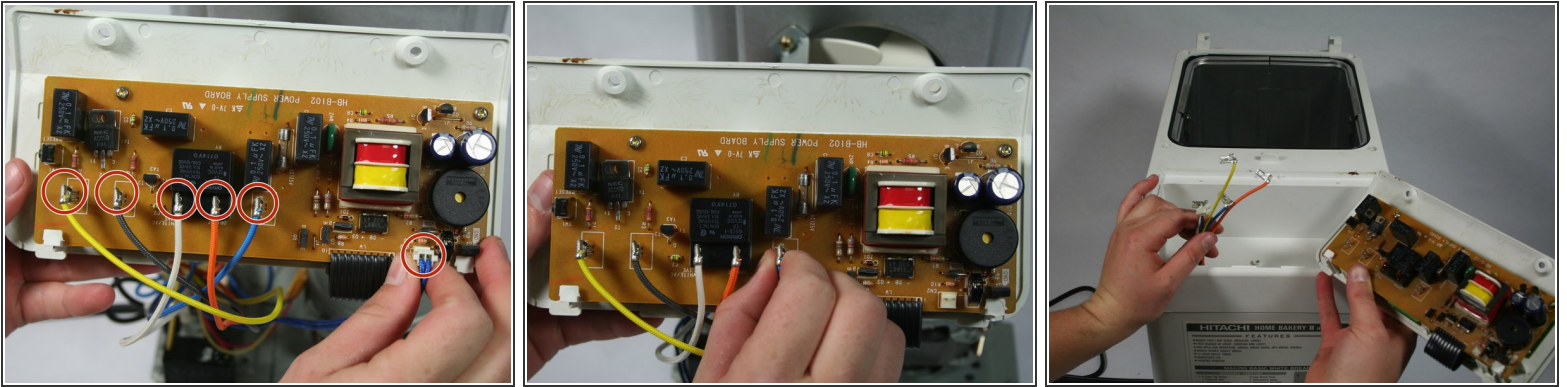
- Remove the lid by opening it to a 45 degree angle and pulling out.

Step 2



- Next, remove the two 1.3cm screws that hold on the control panel with a #2 Phillips head screwdriver. These screws, and the rest of the screws in this guide can all be removed using a #2 Phillips head screwdriver.
- Then pull the control panel out of the device by using a metal spudger to pry it up. Flip it over and look at the back of the motherboard.

Step 3



- You will then have to disconnect the six wires that connect the motherboard to the device. This can be done by firmly grasping a connector and pulling straight out from the unit. Once all of the wires have been disconnected, set aside the control unit.

Step 4



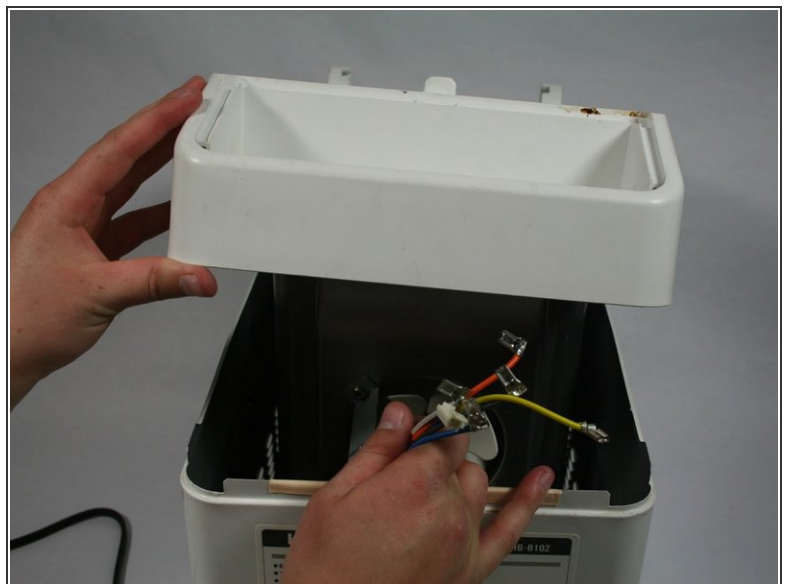
- Remove the five 1cm screws that hold the the casing together. There will be two on each side, and one on the back.

Step 5



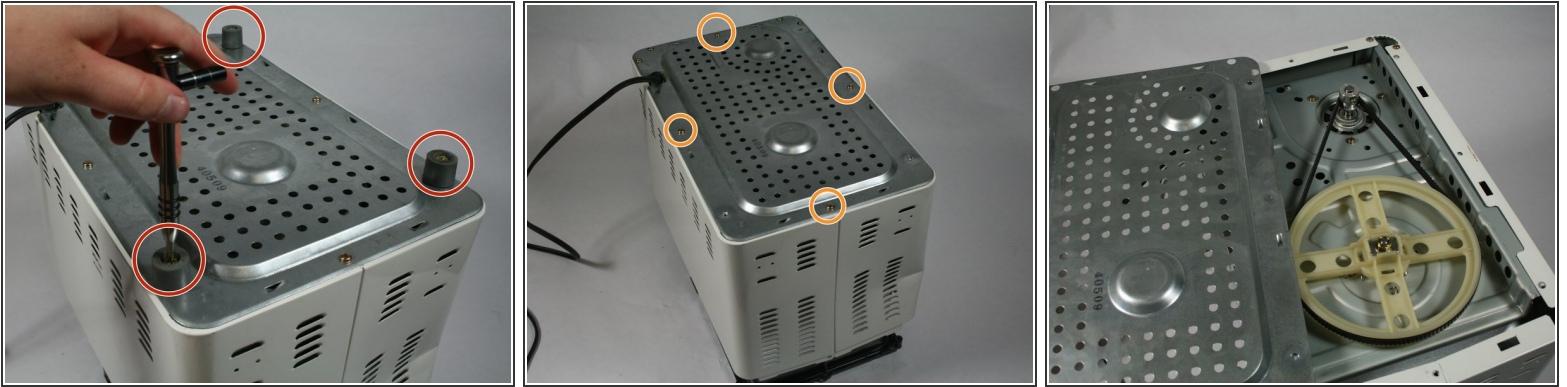
- Unscrew the four 1.4 cm screws surrounding the slot for the bread pan.

Step 6



- Now you can remove the top part of the assembly off by pulling straight up. Don't forget to gently pull your wires through.

Step 7



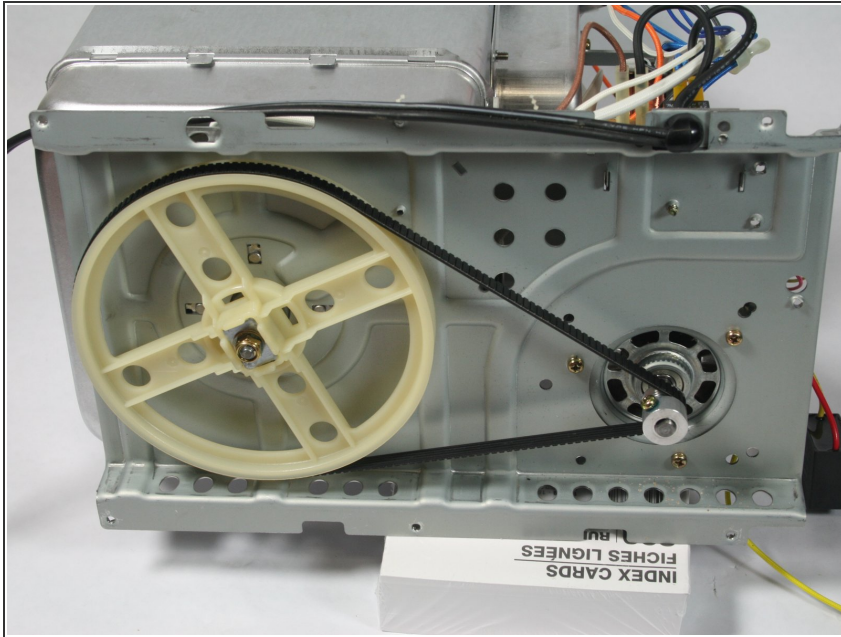
- Flip the machine over so that the bottom is facing straight up. Then unscrew the four feet on the device with a #2 Phillips head screwdriver. The screws will stay in the rubber feet.
- Next, remove the four 8mm screws on the four sides of the machine. You do not need to unscrew the screws on the front end corners.
- Once the feet and screws are undone gently pull the metal plate off.

Step 8



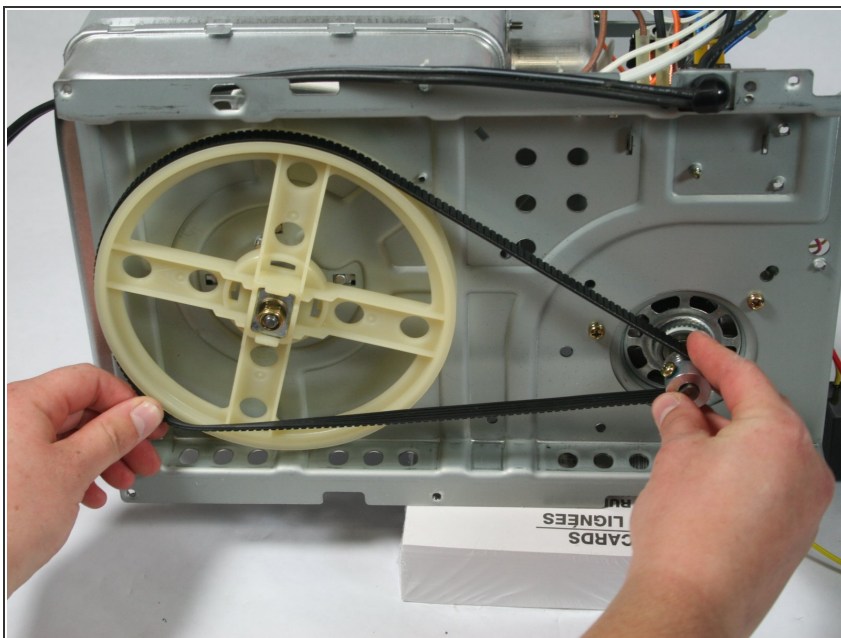
- Now that the bottom plate and top housing are off, you can gently pull the inner components out of the outer metal housing . This can be done by grabbing hold of the bread pan casing and slowly lifting the entire inner assembly straight up.
- You now have access to the belt and motor.

Step 9 — Mixing Paddle Drive Belt



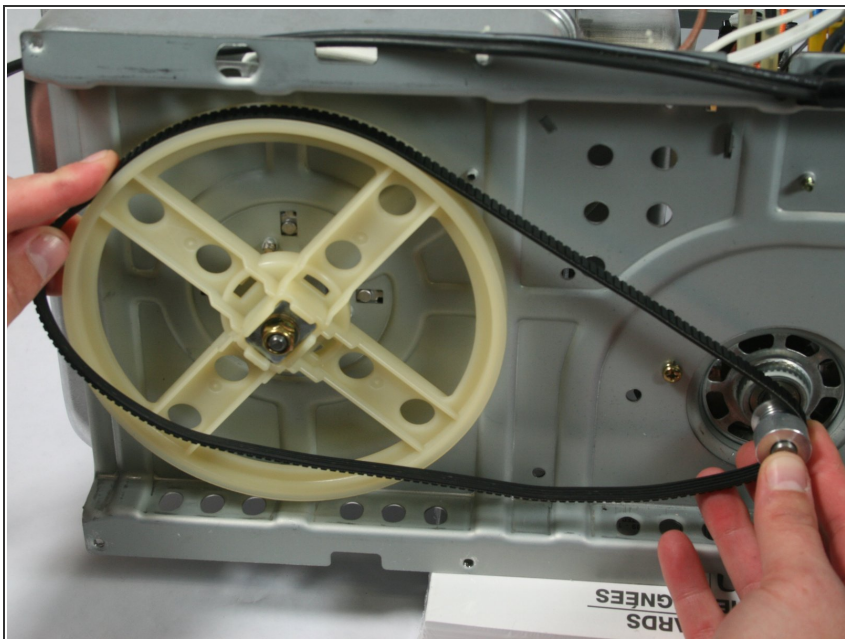
- The Belt assembly can be found on the bottom of the bread maker.

Step 10



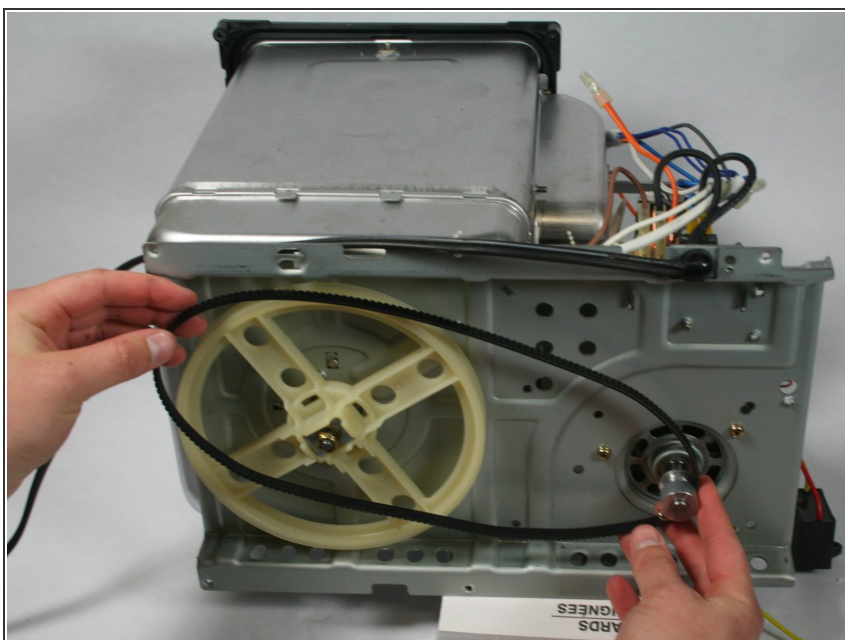
- Begin by pulling the belt off of the large wheel just slightly at the bottom.

Step 11



- Then rotate the large wheel upwards until the belt becomes loose in your hands.

Step 12



- Now that the belt is free you can discard a loose or damaged belt and replace it with a new one.

To reassemble your device, follow these instructions in reverse order.