



Panasonic DMC-FZ70 Back Frame Replacement

This guide will show you how to replace the back frame and access the back panel buttons of a Panasonic FZ70.

Written By: Emily Kuzmicky



INTRODUCTION

This guide will show you how to access the front frame of the camera. This is the area of the camera that contains buttons like the playback and cursor buttons, as well as the window through which you can view the LCD screen. If these buttons have come loose, or if the frame is cracked, this guide will help you replace the frame. Before you begin, make sure that the battery and SD card have been removed.



TOOLS:

- [Phillips #00 Screwdriver](#) (1)
 - [Metal Spudger](#) (1)
 - [iFixit Opening Tools](#) (1)
 - [Pro Tech Toolkit](#) (1)
- 150 mm Flex Extension*
- [Phillips #0 Screwdriver](#) (1)
-

Step 1 — Back Panel



- i** All screws should be removed using a Phillips #0 screwdriver.
- Using your screwdriver, unscrew the two 5.0 mm Philips screws to the right of the LCD screen.

Step 2



- Flip the camera over to the left side of the screen and unscrew the 5mm Phillips screw found there.

Step 3



- Turn the camera upside down and unscrew the three 5mm screws found on the bottom.

Step 4



- On the top of the camera locate the two rails with a thin sheet of metal on the floor between them.
- With a metal spudger, lift this sheet and push it out of the rail device to detach it from the camera.

Step 5



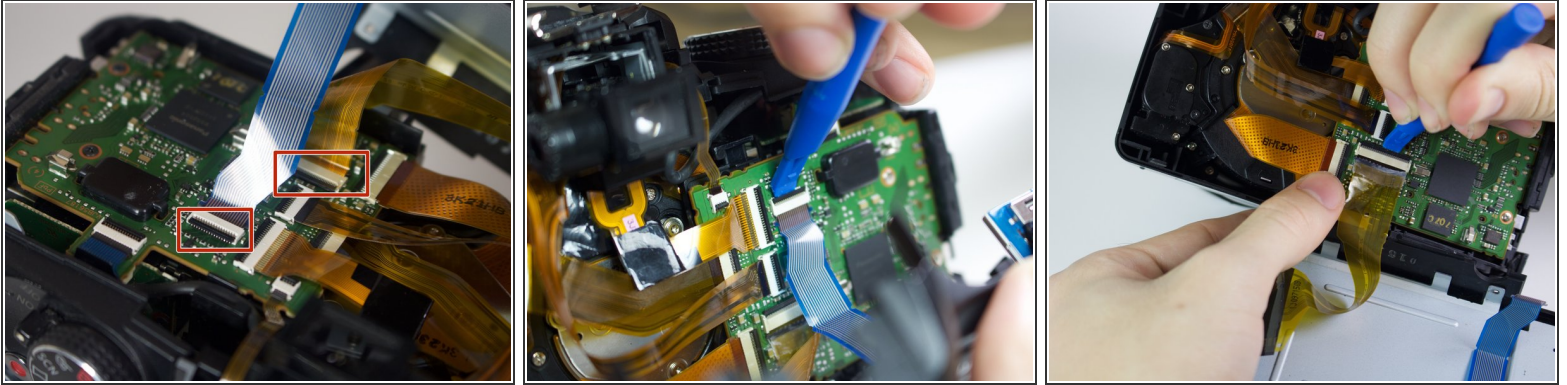
- Proceed to remove the four 5mm Phillips screws that you just uncovered.

Step 6



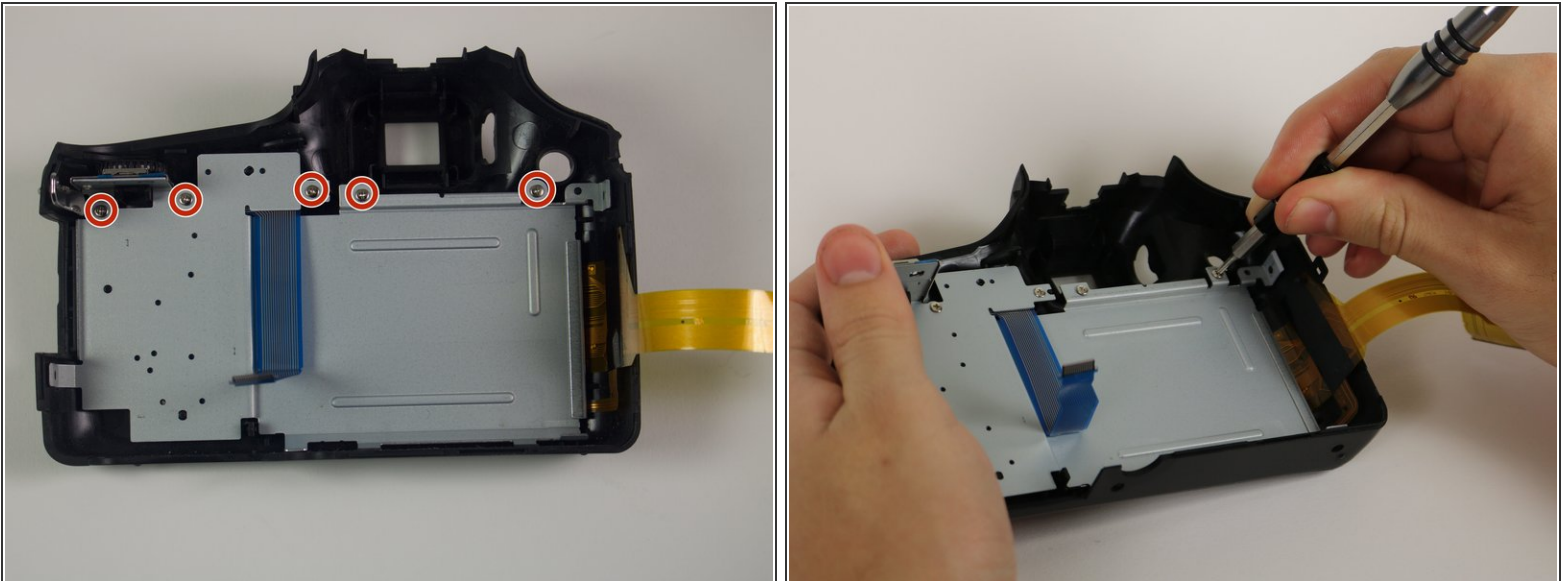
- Slowly pull on both side of the camera, until both halves begin to separate from each other.
- ⚠ Do not pull too hard, as both halves are held together with ZIF connector cables.

Step 7



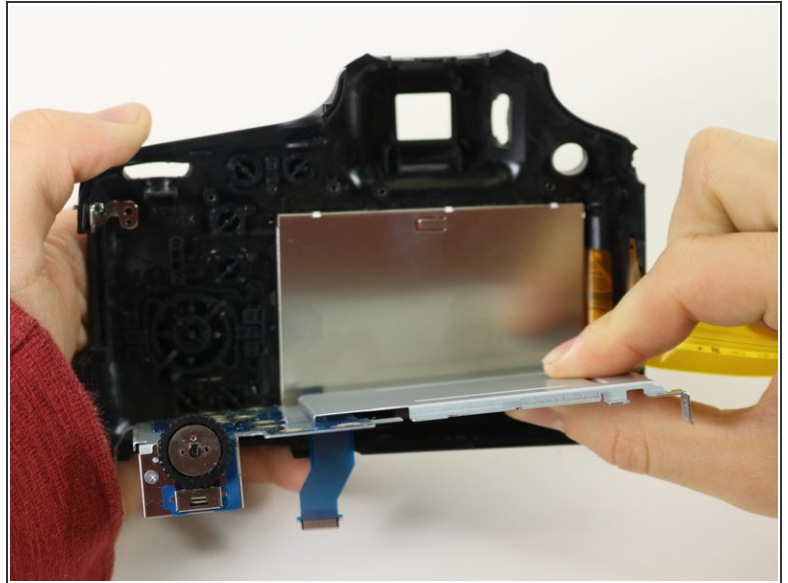
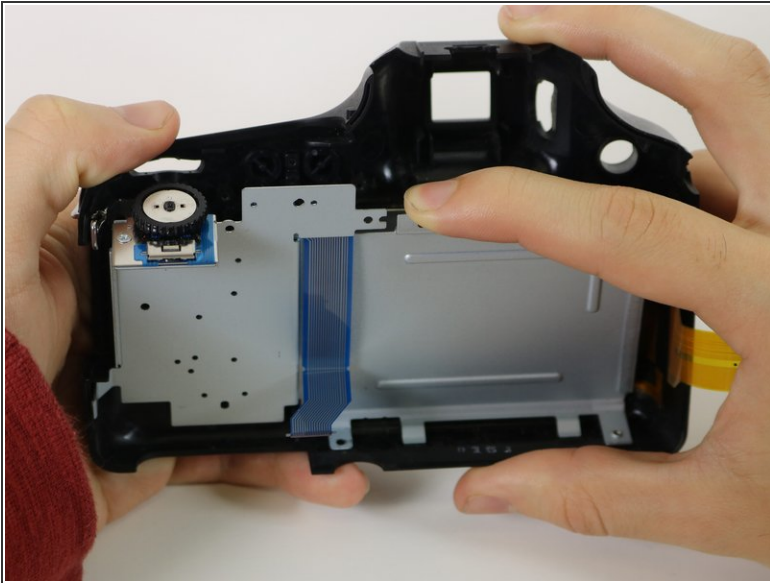
- Using a plastic opening tool, carefully flip up the small black levers that attach the ribbon cables to the ZIF connectors on the motherboard.
- Carefully pull the ribbon cables out of the slot once they have been released.
- ⓘ Only the two indicated connectors need to be removed to separate the two halves of the camera.

Step 8 — LCD Screen



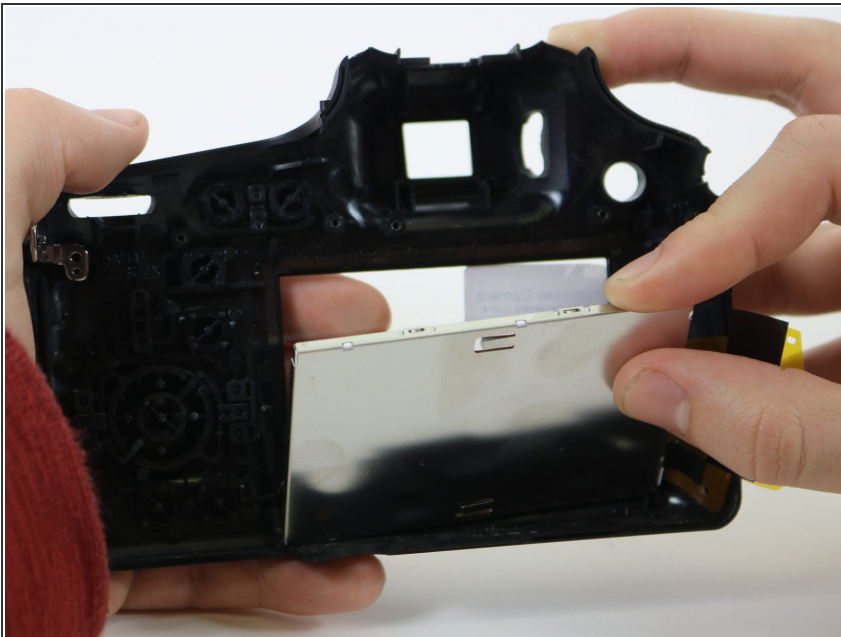
- Unscrew the five 5mm screws on the panel that you just removed.

Step 9



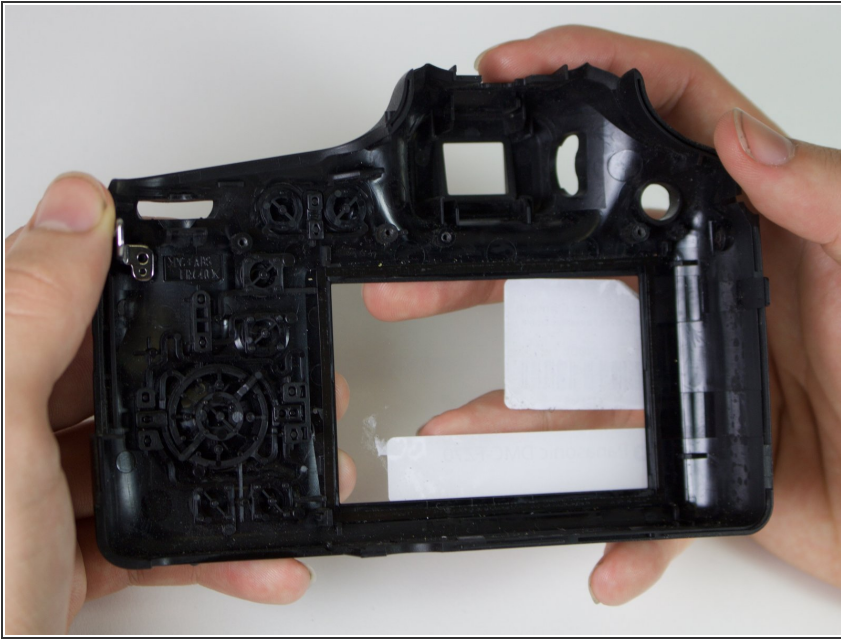
- Remove the entire silver panel to reveal the back of the LCD screen

Step 10



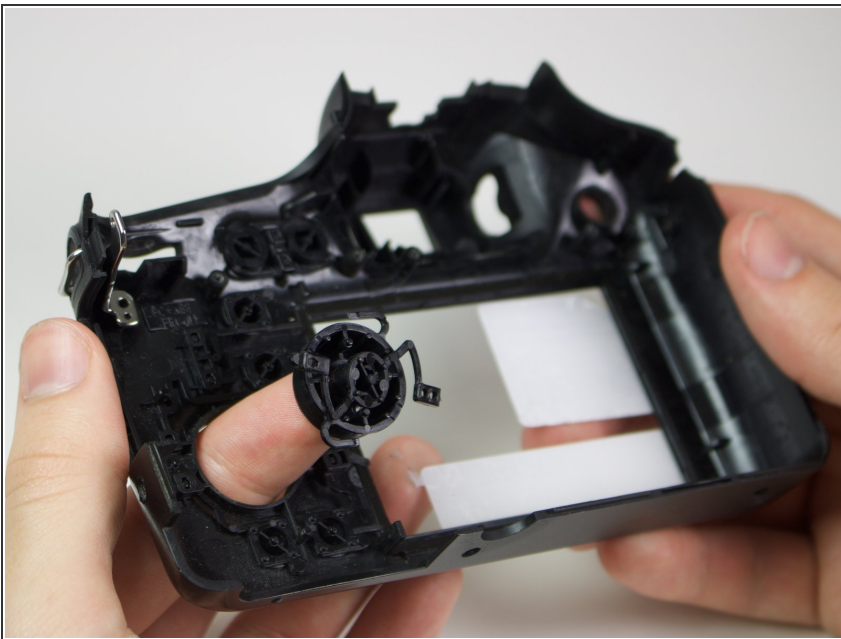
- Remove the LCD screen.

Step 11 — Back Frame



- You can now access the back panel and the buttons on it.

Step 12



- To remove a button, lightly press its front face and it should detach with ease.
- To put a button back into the camera, press on front its back face until it snaps back on.

To reassemble your device, follow these instructions in reverse order.