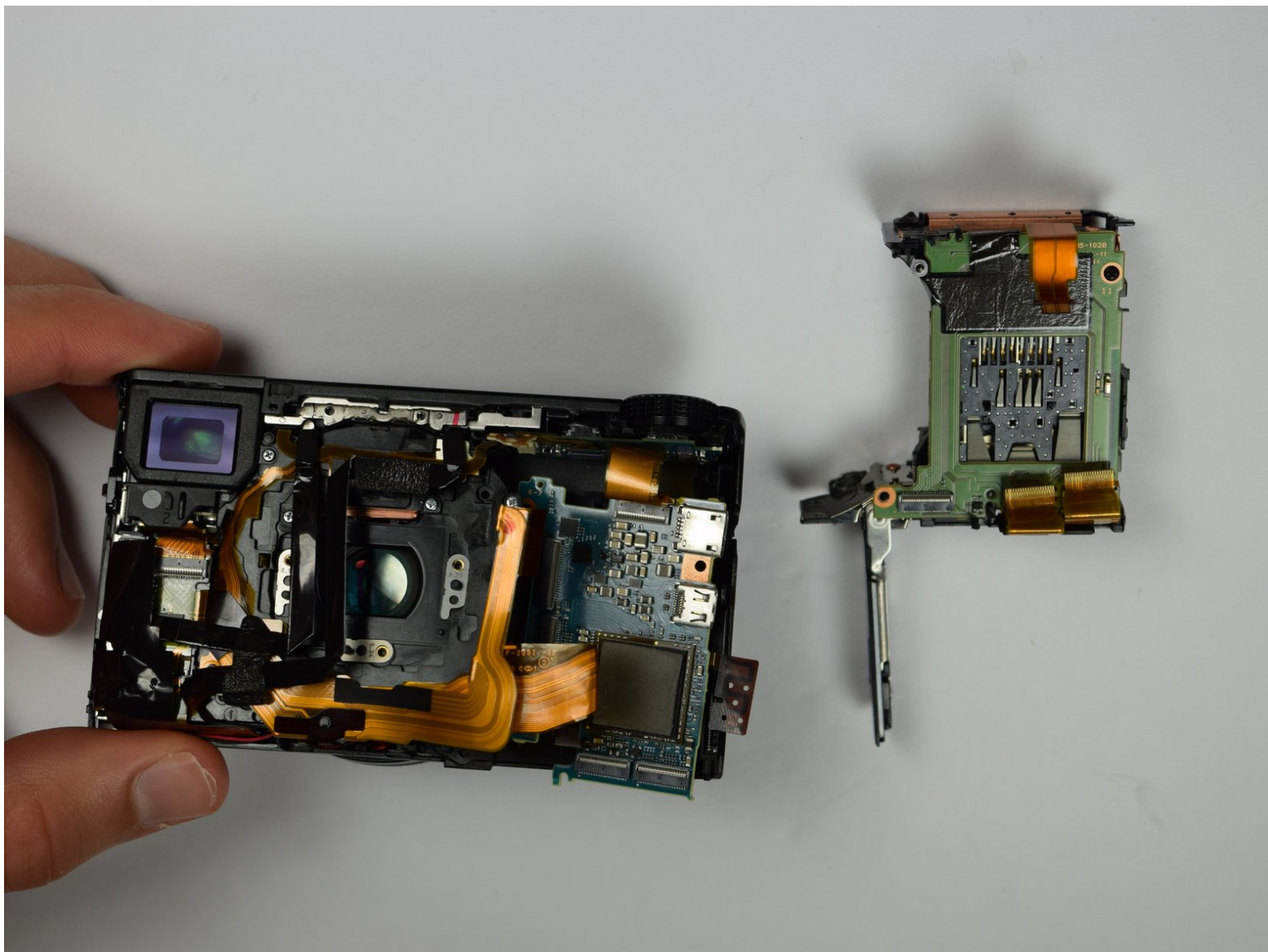




# Sony DSC-RX100MA SD Card Holder Replacement

This guide will show you how to replace the SD card holder inside the camera.

Written By: Isaiah De Leon





## TOOLS:

- [Phillips #0 Screwdriver](#) (1)
- [iFixit Opening Tools](#) (1)
- [Tweezers](#) (1)

## Step 1 — Back Cover



- Remove battery by sliding the tab to open the cover

## Step 2



- Using the screwdriver, remove all screws (black 2.5mm) from outermost layer of the assembly.

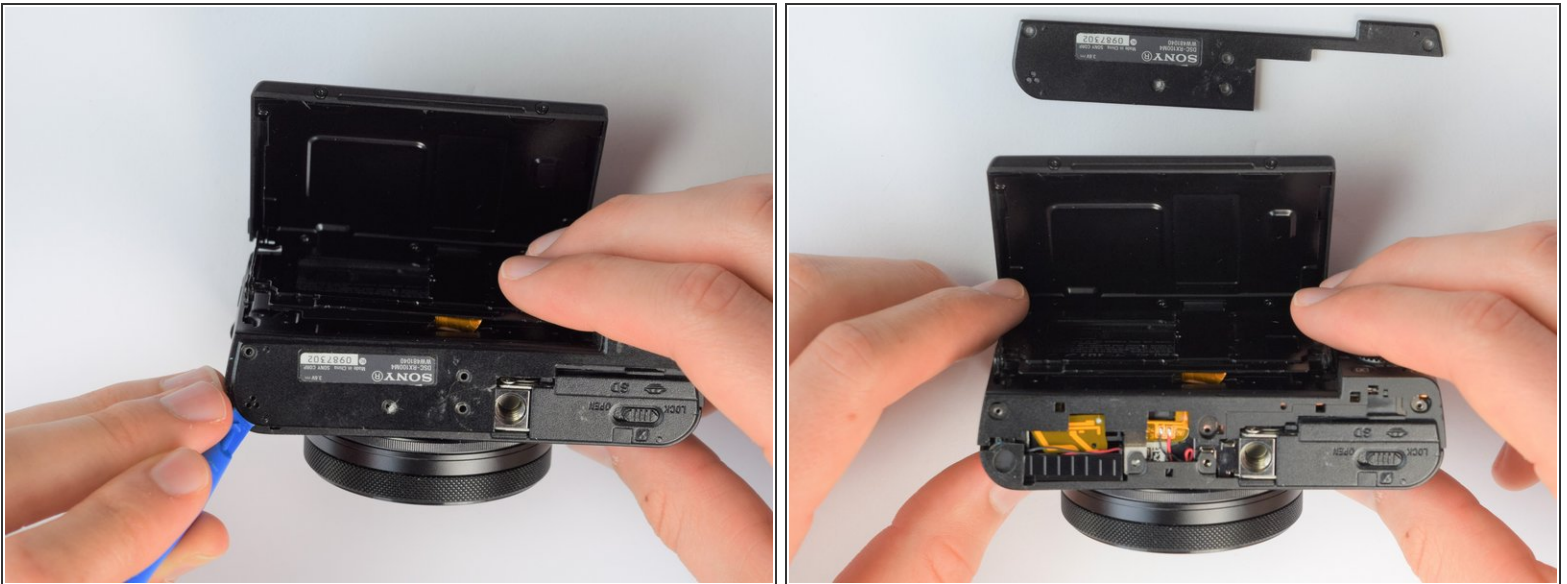
***i*** All screws in the camera can be removed with the PH 0 driver head.

### Step 3



- Also using the screwdriver, remove screws (black 1mm) underneath articulated LCD screen.
- Remove the marked 2.5 mm screws with the screwdriver

### Step 4



- Using the plastic opening tools, carefully pry off the bottom plate.

⚠ Do not pull too hard as you may break the plastic casing.

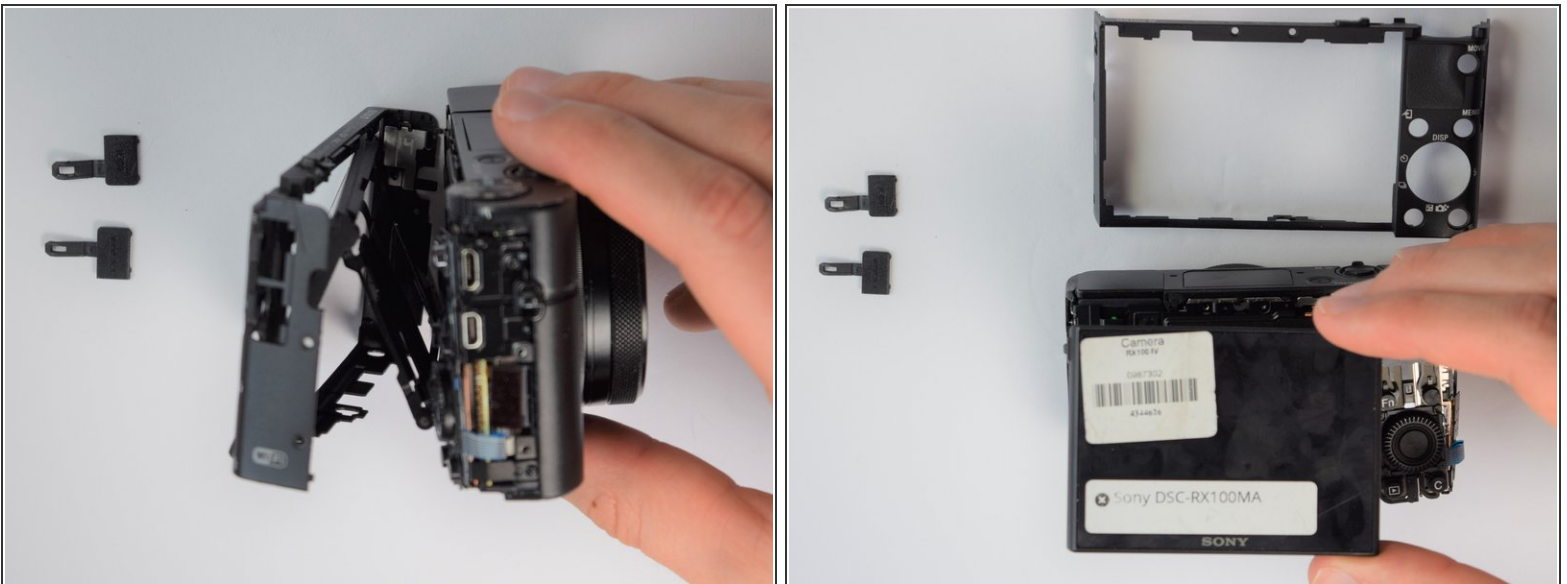


## Step 5



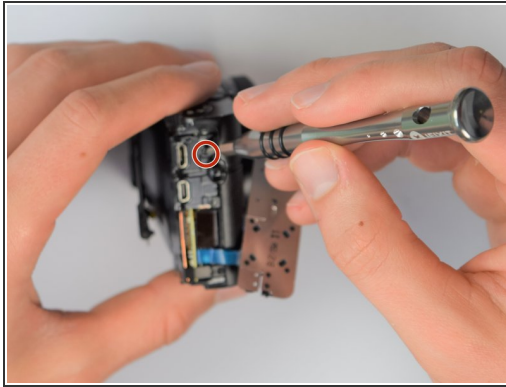
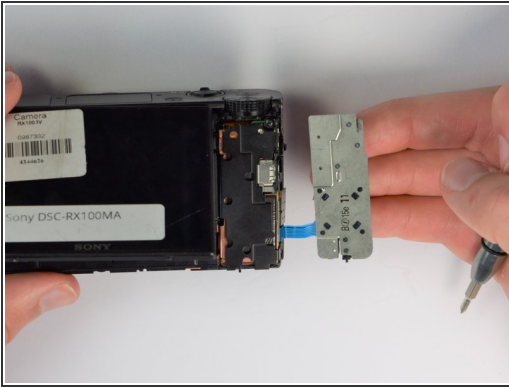
- Using the same plastic opening tools, separate the screen and back assembly from the front portion of the camera
- Once the back assembly is slightly detached, pull the media covers for the HDMI and Multimedia ports

## Step 6



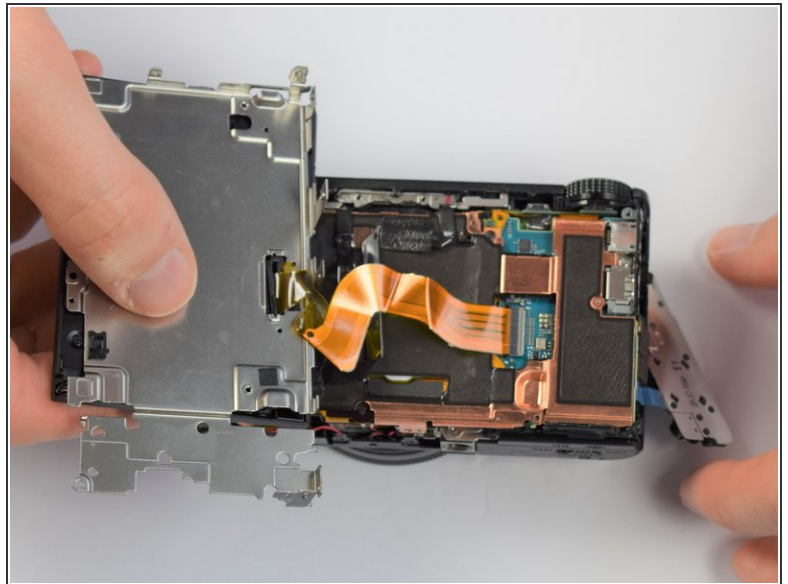
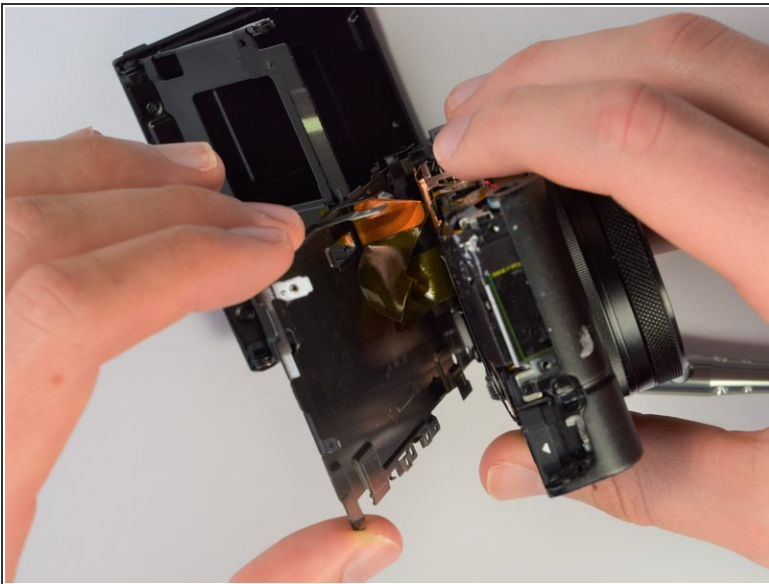
- Remove the back cover

## Step 7 — Screen



- Move side panel to get access to screws
- Remove two screws (black 2.5mm) with PH #0 screwdriver

## Step 8

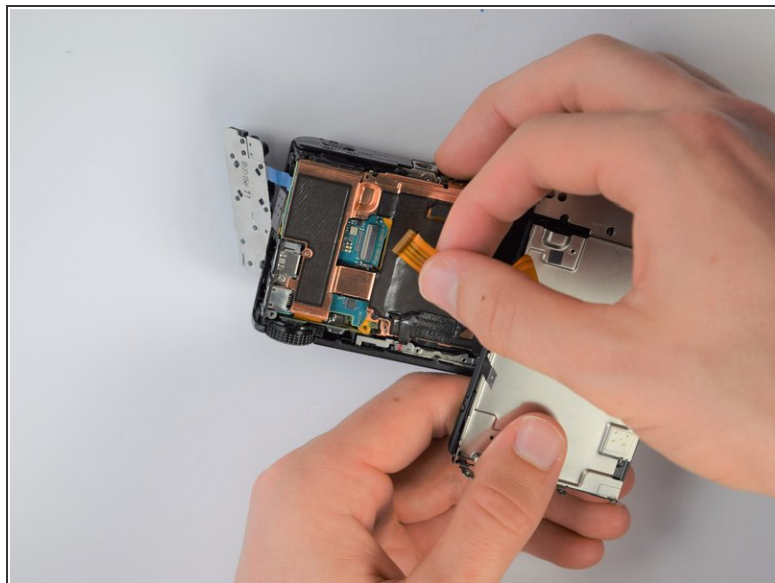
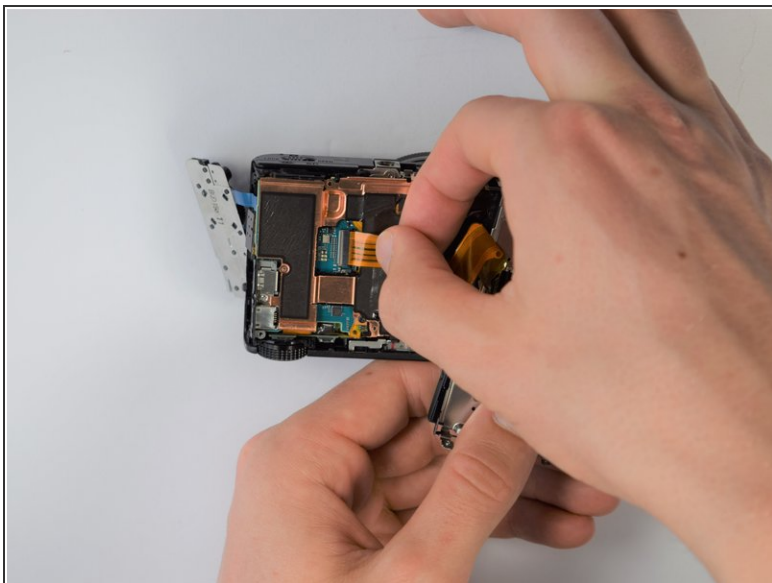


- Remove back panel assembly while still keeping ribbon cable attached

⚠ Be very gentle and care not to tear the gold ribbon cable. This will be a common theme throughout these replacement guides.

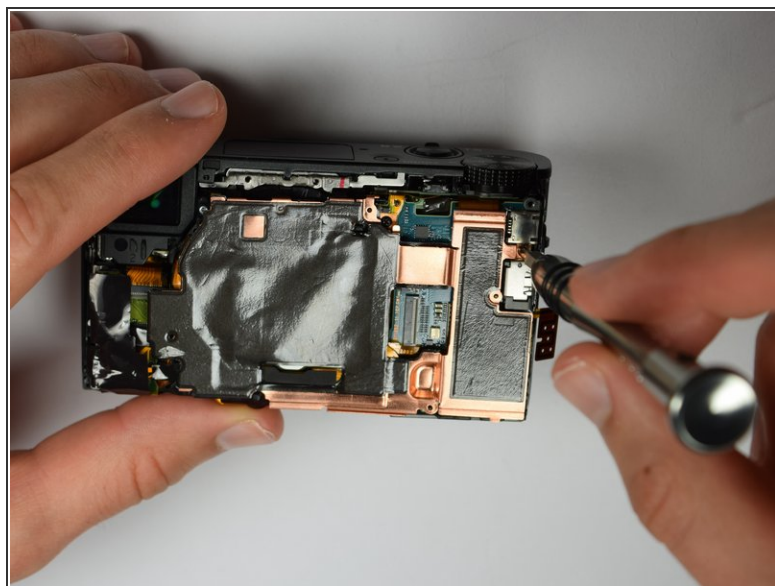
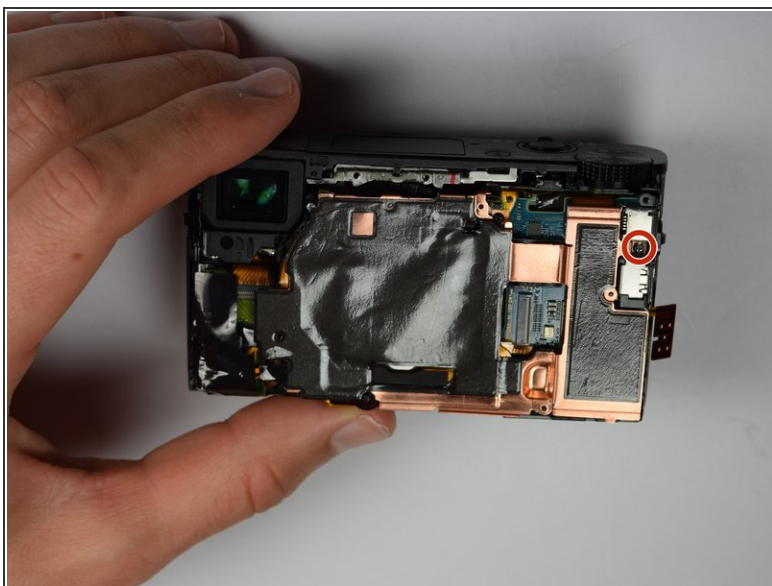


## Step 9



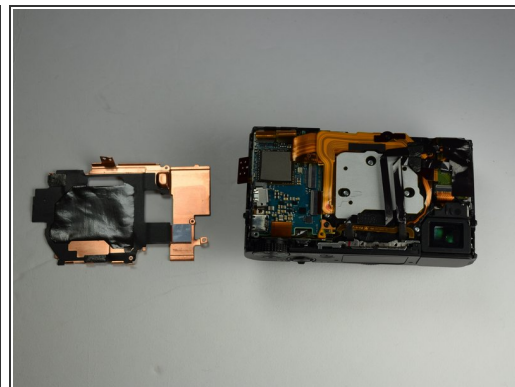
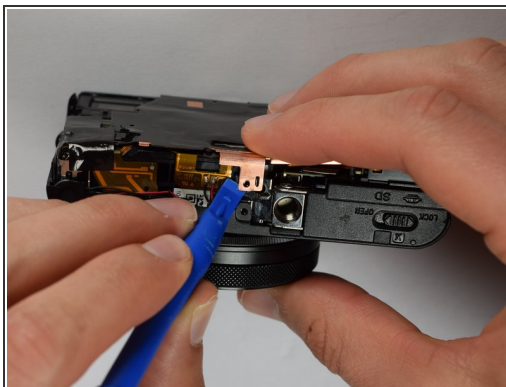
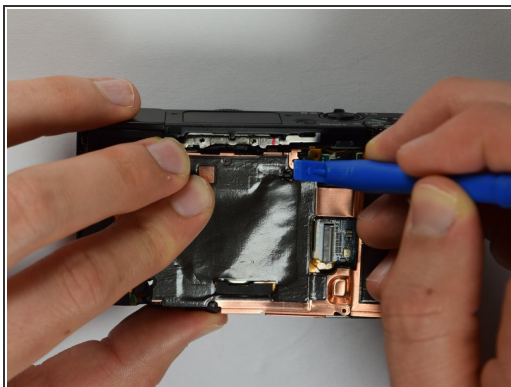
- Carefully unplug ribbon connector to fully detach LCD screen assembly from camera

## Step 10 — SD Card Holder



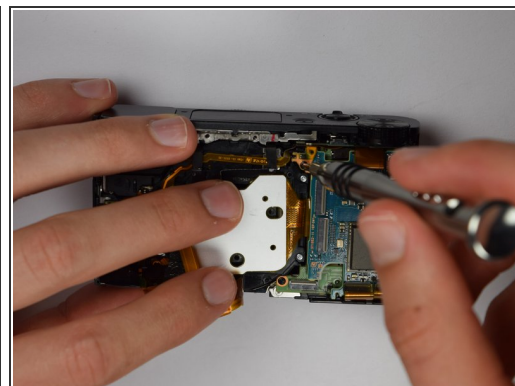
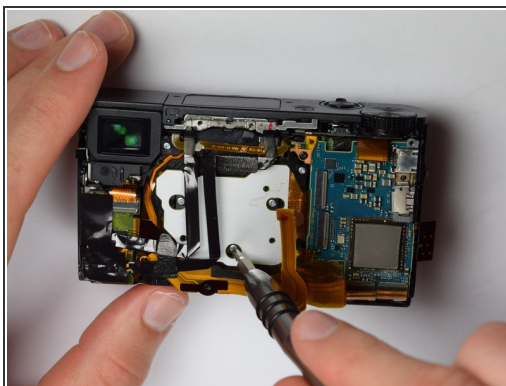
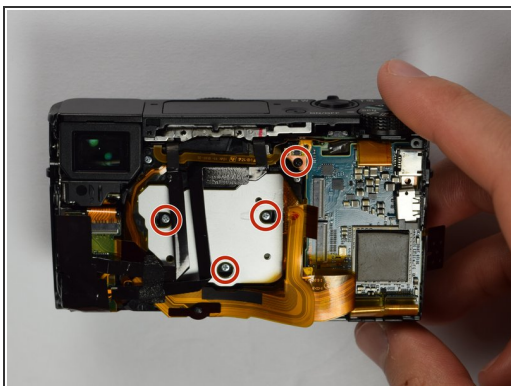
- Remove remaining screw which holds the copper casing in the camera

## Step 11



- Using the plastic opening tools, carefully pry off the copper casing at the two pictured points.
- Remove casing

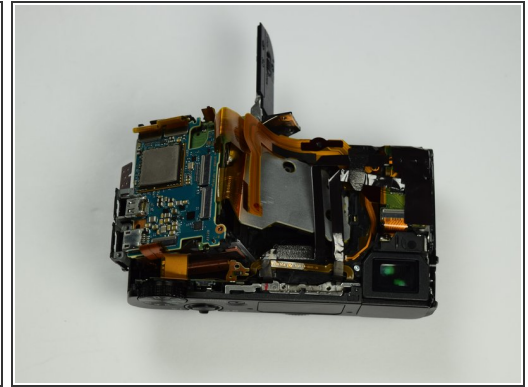
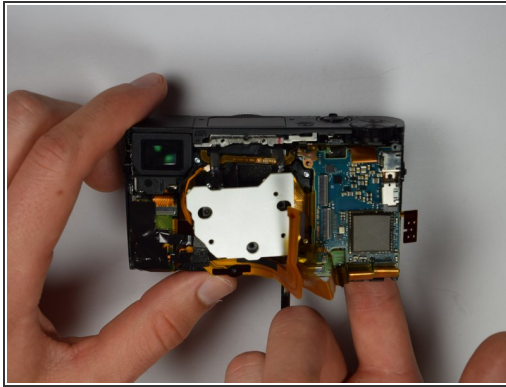
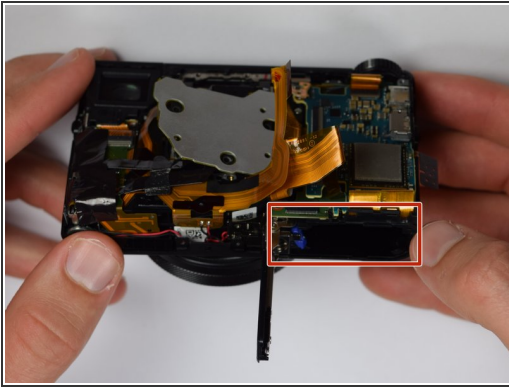
## Step 12



- Using Philips Screwdriver, remove the four screws as marked on the picture

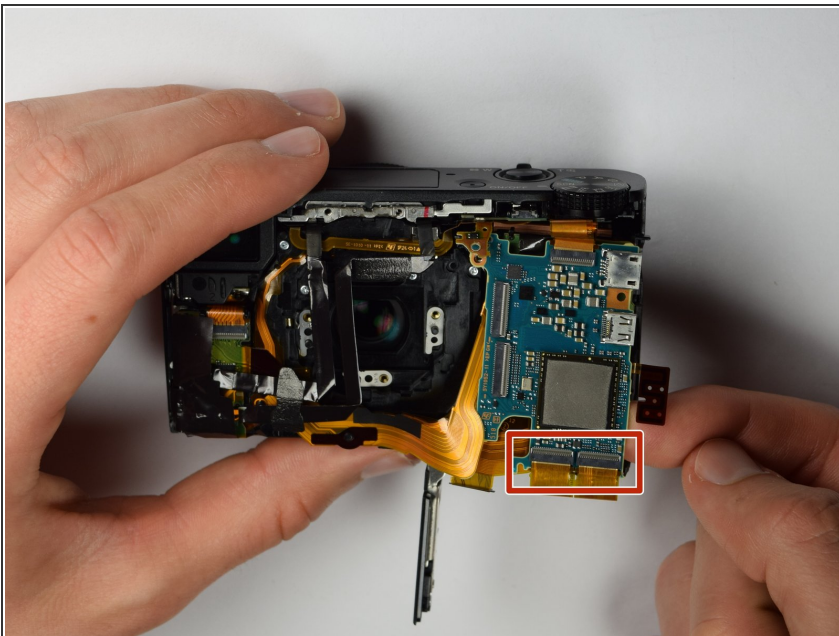


## Step 13



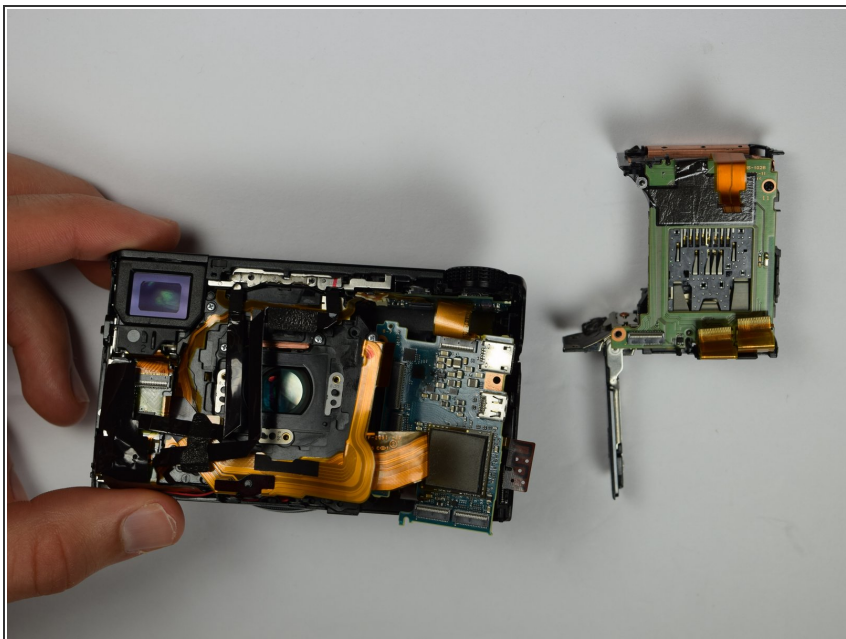
- Place your finger into the battery port and push up on the SD card holder to push it out of its socket.
- ⓘ Give it a little wiggle and you should feel the SD card holder come out.

## Step 14



- Carefully remove the gold ribbons from the ports of the motherboard by lifting the gray tabs and pulling away the ribbon
  - You may want to use tweezers to remove the gold ribbons as a more delicate and safe approach, but this is not required
- ⚠ Do not pull away motherboard too hard as the ribbons are very fragile**

## Step 15



- Remove the SD card holder. It should easily come out because all of the prerequisite screws were already removed.

To reassemble your device, follow these instructions in reverse order.