



How to Replace a Chain Link Fence Gate

This guide explains how to replace a chain link fence gate.

Written By: Lucy Wiswall



INTRODUCTION

This guide explains how to replace a chain link fence gate.



TOOLS:

- [1/2" Socket Wrench](#) (1)
- [Adjustable Wrench](#) (1)



PARTS:

- [Drive through chain link fence gate](#) (1)
- [Galvanized Drive Gate Set](#) (2)

Step 1 — Chain link fence gate



- Spray WD-40 on each hinge bolt. This will make it easier to remove them.

Step 2



- Remove the bolt from the hinge strap on the fence post.
- Wipe the excess lubricant from the bolt to avoid slipping.
- Slide the loosened hinge strap up to remove the pin from the loop on the gate hinge.
- ⓘ Use a 9/16" socket wrench or a crescent wrench.
- Repeat this process for the bottom hinge.

Step 3



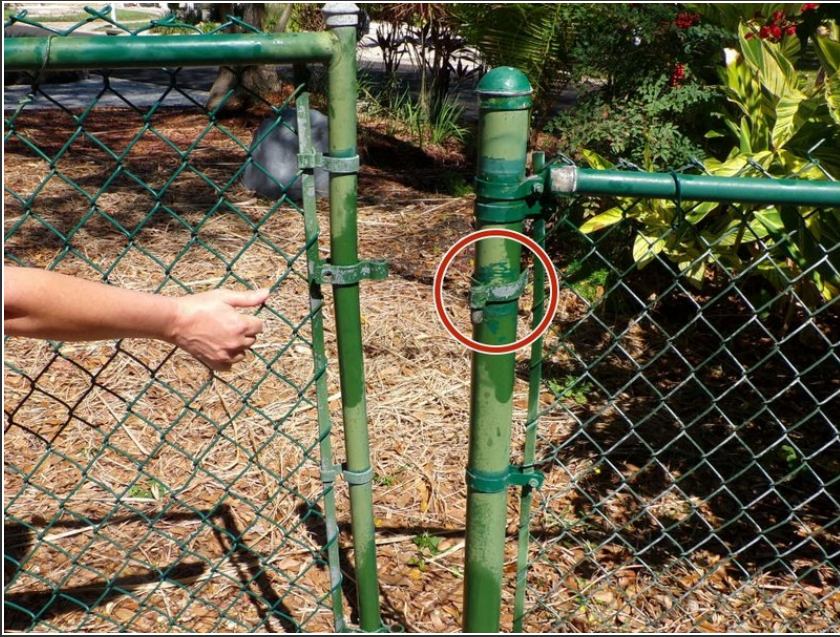
- Slide the gate away from the fence post set it aside.

Step 4



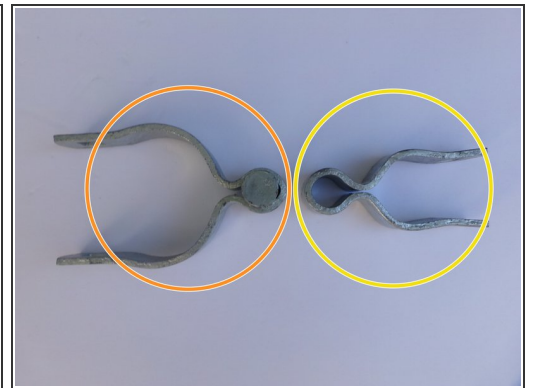
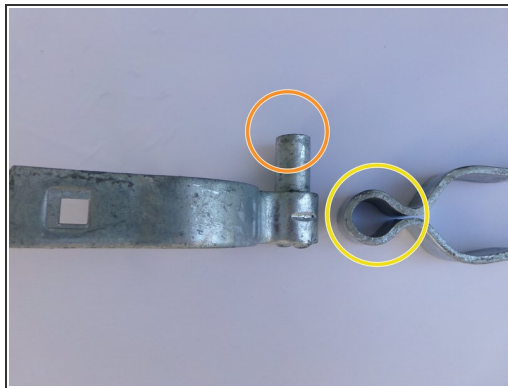
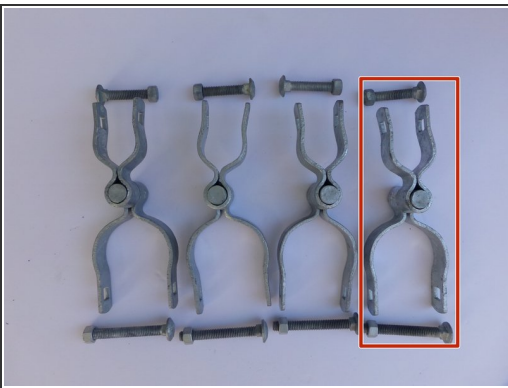
- Repeat the previous steps to remove the second gate pane.

Step 5



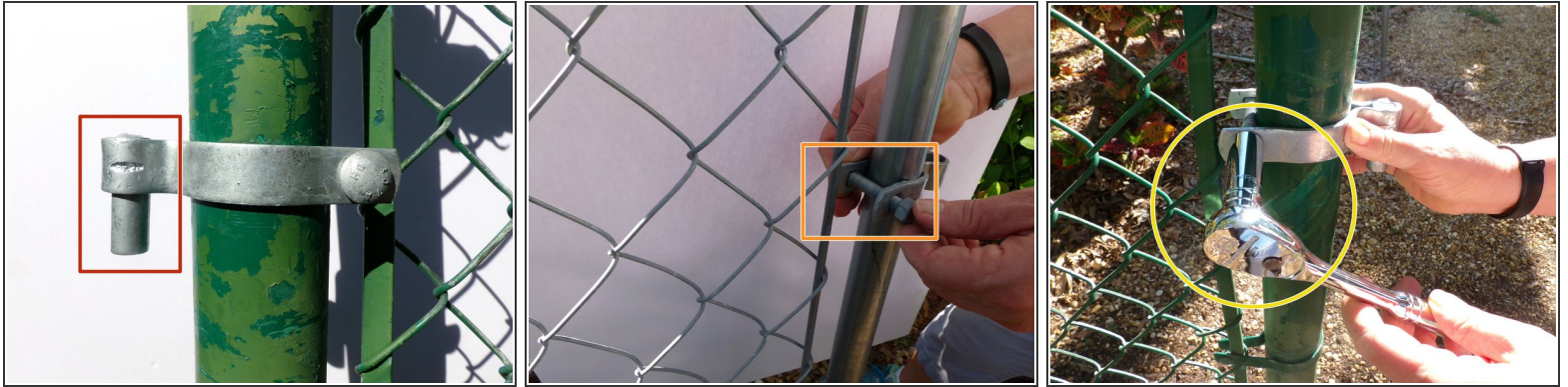
- Remove the unbolted post hinges from the fence posts.

Step 6



- Open the Galvanized Drive Gate Set and verify that you have four hinge pairs.
 - Separate one of the hinge pairs.
- i** The Post Hinge has a pin. The Gate Hinge has a loop.

Step 7



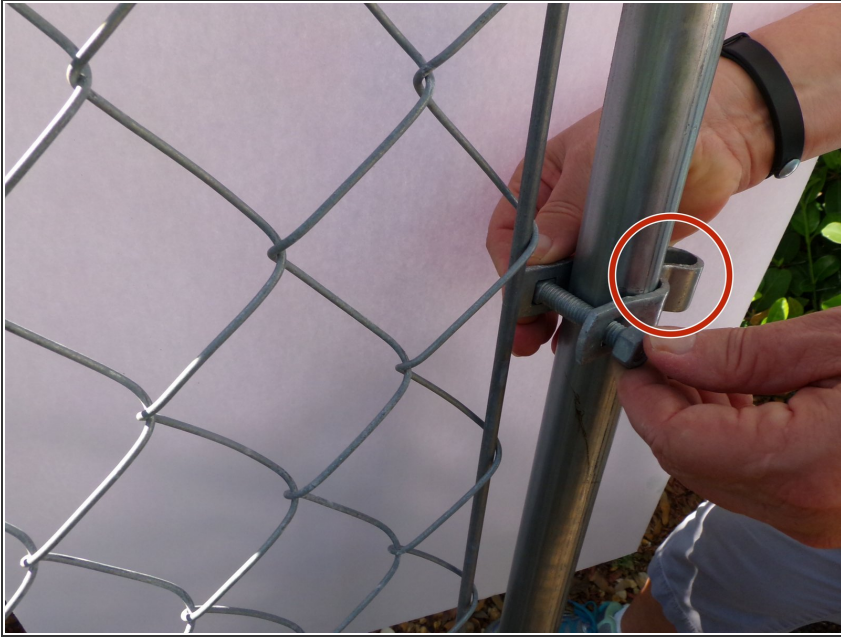
- Slide the hinge strap onto the post so that the pin is facing down.
- Slide the hinge strap onto the post so that the pin is facing down.
- Slide a nut onto the end of the bolt.
- Tighten the nut using the socket wrench.

Step 8



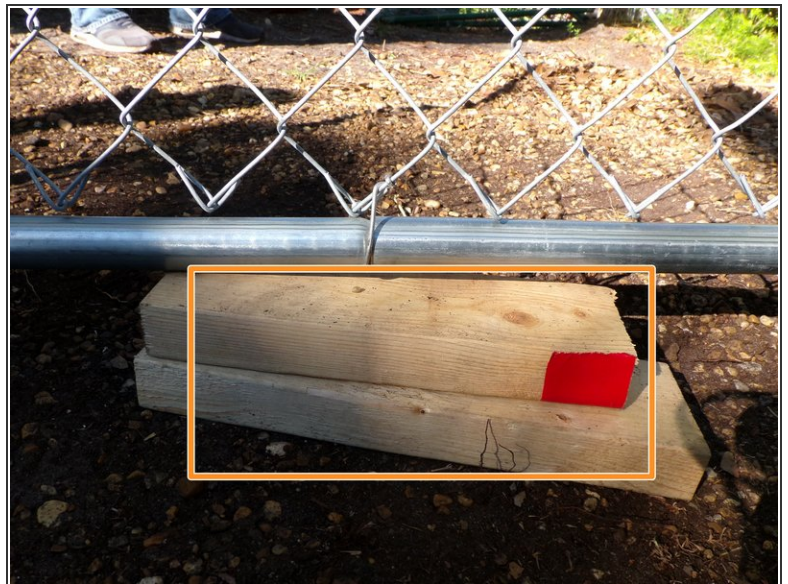
- Slide the hinge strap onto the post so that the pin is facing up.
- Slide a bolt through the holes in the strap.
- Slide a nut onto the end of the bolt.
- Tighten the nut using the socket wrench.

Step 9



- Attach the two gate hinges to the side of the gate frame with the loops facing out.
- ⓘ Keep the straps loose enough so that you can slide the hinges up and down on the gate frame, since you will need to adjust them once the gate is in position.

Step 10



- Place blocks on the ground at the where you will install the gate. These will support the gate while you are connecting the hinges.
- Lift the gate panel into position so that the gate lines up with the fence and at the desired height. Adjust the blocks as necessary to achieve the desired height.

Step 11



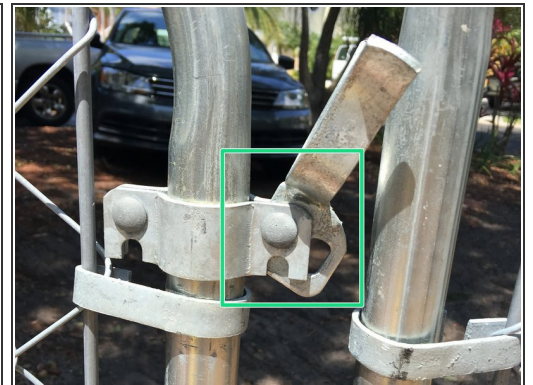
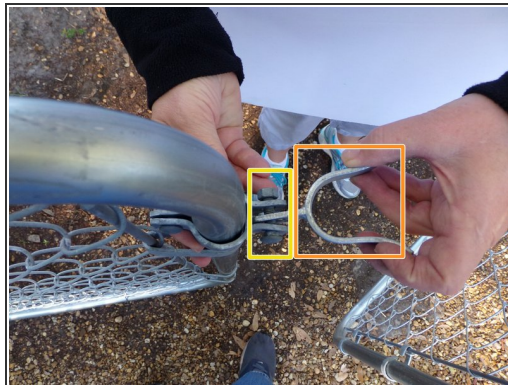
- Slide the top gate hinge up as you slide the loop over the pin on the top post hinge.
- Tighten the nut on the gate hinge straps.
- Repeat for the bottom gate hinge.

Step 12



- Adjust the hinges so that the gate can swing freely.
- ❗ If the gate is too wide to close properly, adjust the angle of the hinges so that they are almost perpendicular, which brings the gate edge closer to the fence post.

Step 13



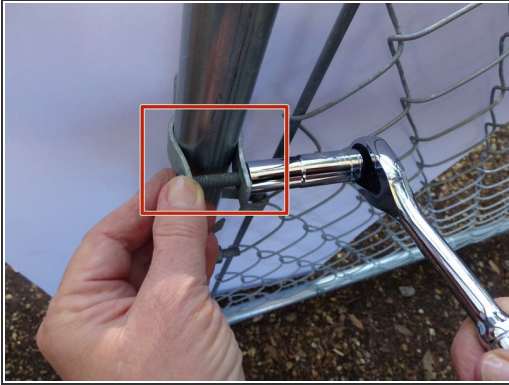
- Using a 1/2" socket wrench or adjustable wrench, bolt the two latch plates on the inside of the gate frame together on one end.
- Insert the latch between the two plates on the outside of the gate frame.
- Insert a bolt and nut. Tighten to secure the latch.

Make sure the latch is loose enough to swing up and down.

This document was generated on 2020-11-13 01:45:54 PM (MST).



Step 14



- Bolt the two post holders onto the gate frame.
- Slide the post down through the post holders and secure in the ground.