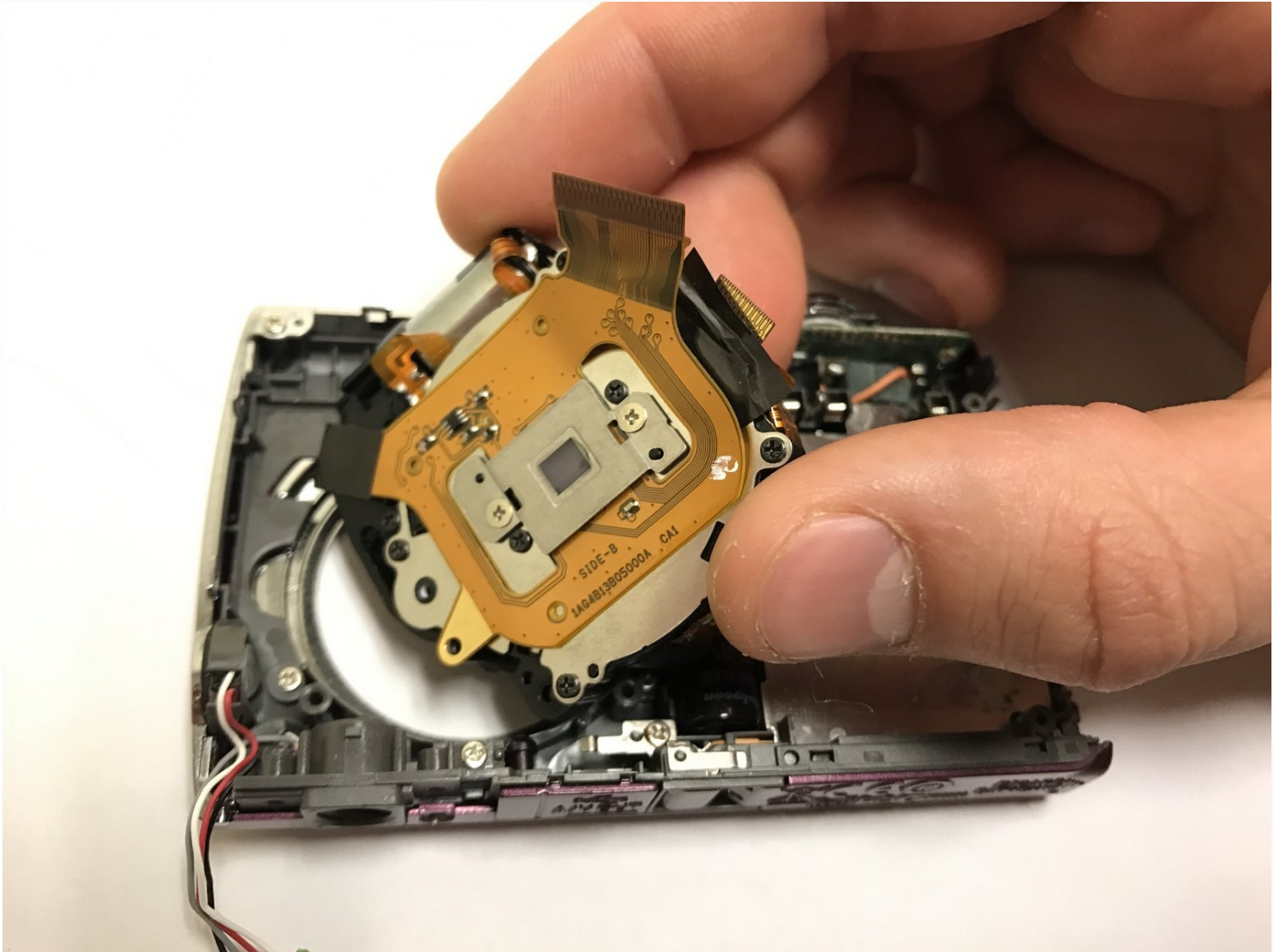




Nikon Coolpix S230 Lens Assembly Replacement

Has the lens on your Nikon Coolpix S230 ceased...

Written By: Chris Helms



INTRODUCTION

Has the lens on your Nikon Coolpix S230 ceased to function properly due to scratches, exposure to water, or other damage? This guide will walk you through all the steps to access and remove the damaged lens assembly so that it can be replaced with a working assembly.

TOOLS:

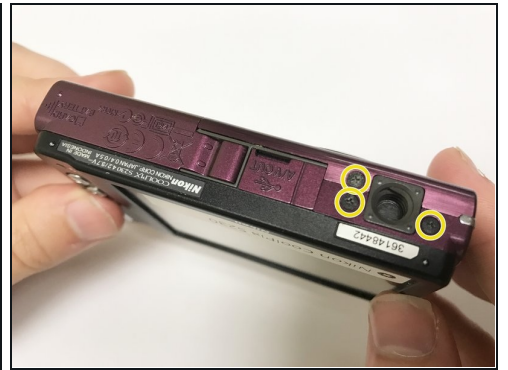
Tweezers (1)

Phillips PH000 Screwdriver (1)

iFixit Opening Tool (1)

Soldering Iron (1)

Step 1 — LCD Screen



 Ensure the camera is turned off and the battery is removed.

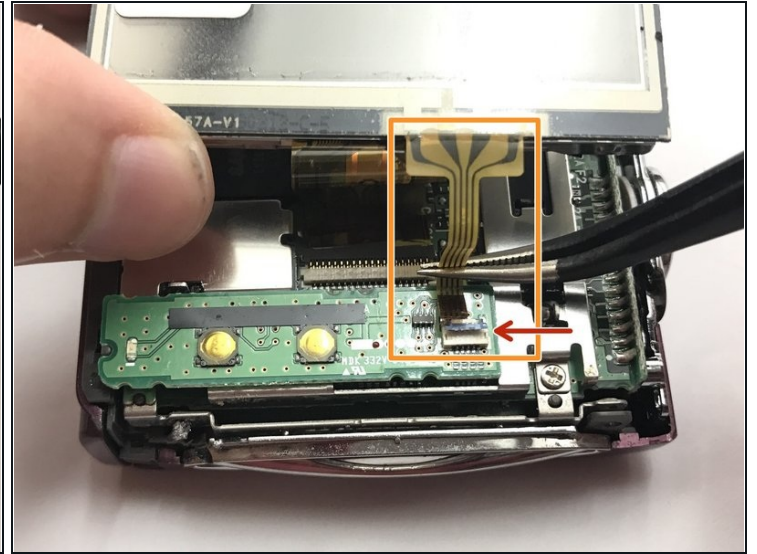
- Using a Phillips #000 screwdriver, remove the four 2-mm screws from the side of the camera.
- Remove the two 3-mm screws from the other side of the camera.
- Finally, remove the three 4-mm screws from the bottom of the camera.

Step 2



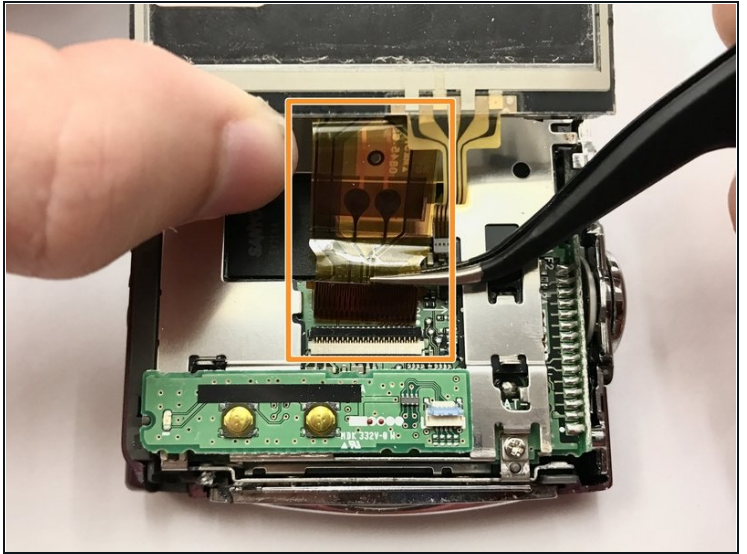
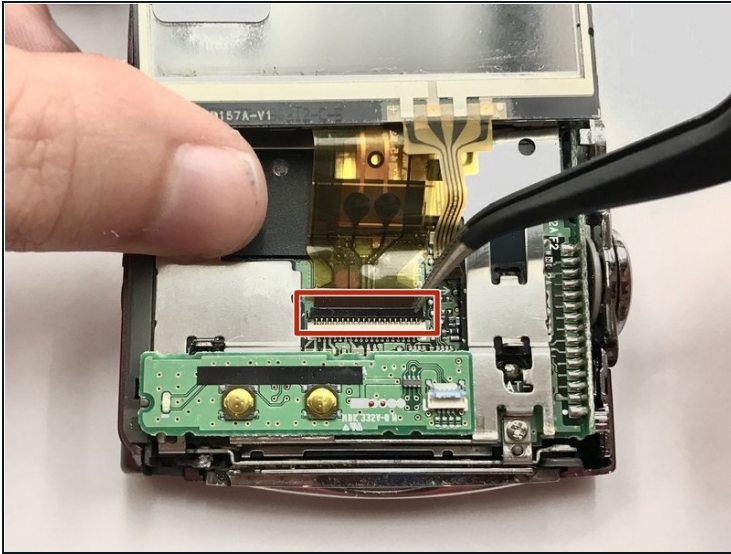
- Insert the plastic opening tool into the seam where the front and back parts of the case meet on the bottom of the camera, and slide it along the bottom. Continue along the next side to separate the back part of the case.
 - ① If necessary, continue along the third and fourth sides until the case separates easily.
- Lift the back off of the case.

Step 3



- Carefully lift the LCD screen to reveal two orange ribbons connecting the screen to the camera.
- Use [tweezers](#) to carefully lift the blue retaining flap holding down the orange ribbon cable. (Flap can be seen open in the second photo)
- Slowly wiggle the ribbon cable back and forth while pulling away from the zero insertion force (ZIF) connector to disconnect the cable.

Step 4



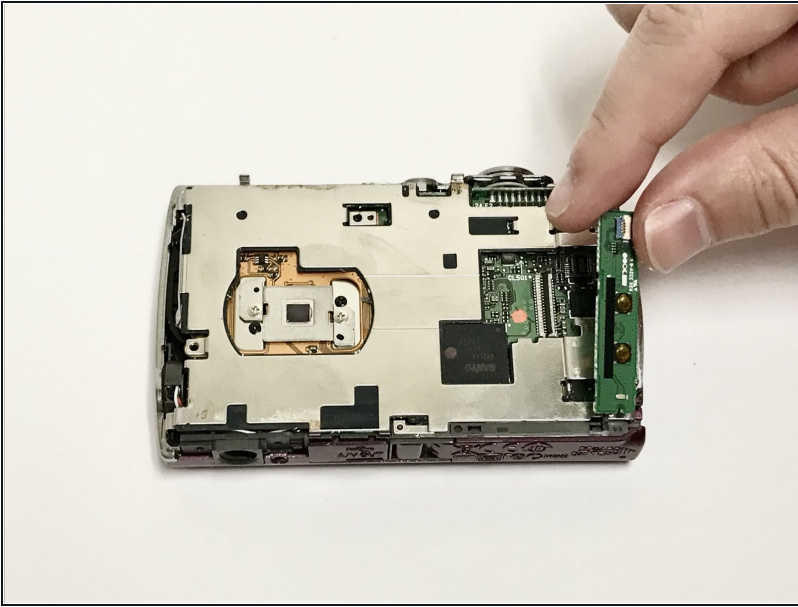
- Using tweezers, lift the black retaining flap holding down the larger orange ribbon cable.
- Carefully remove the ribbon cable from the ZIF connector as before.

Step 5



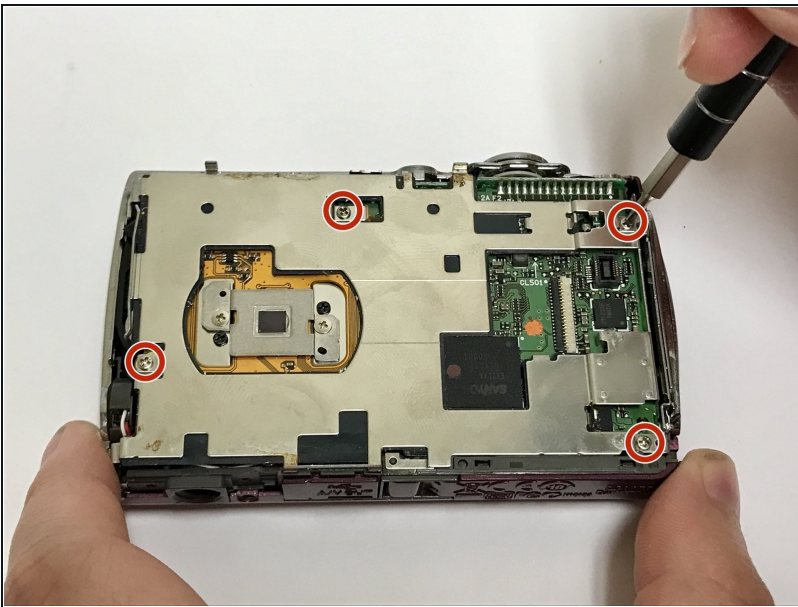
- Lift the LCD screen away from the camera.

Step 6 — Button Circuit Board



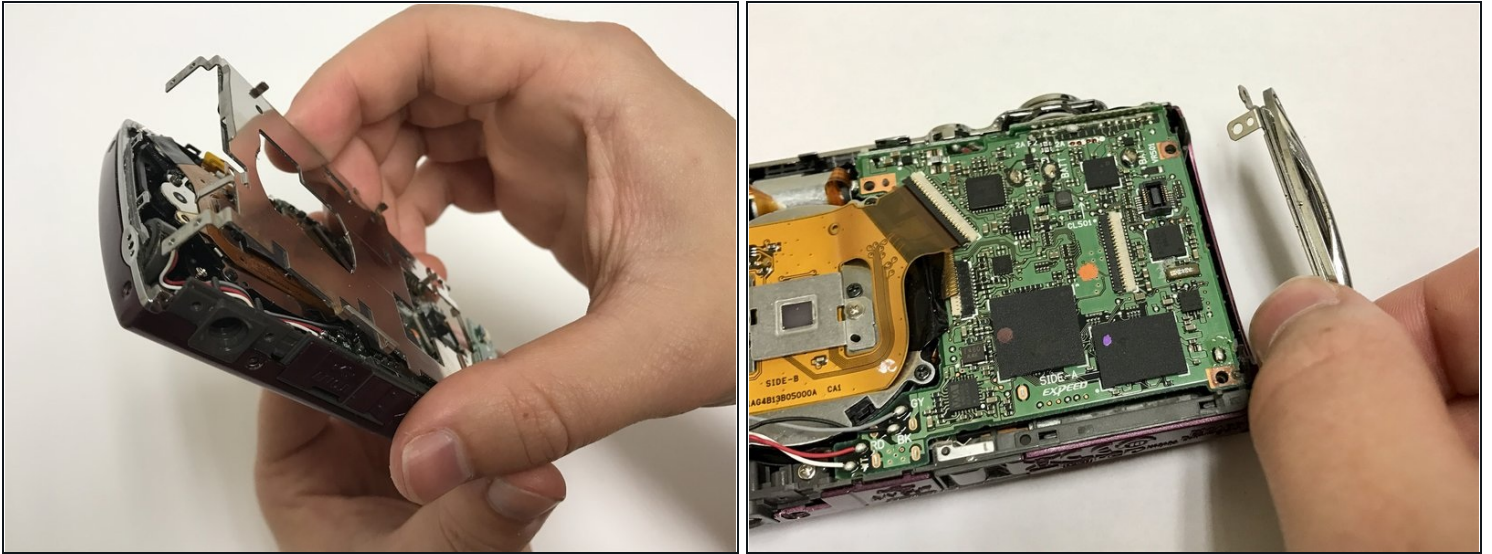
- Lift the button circuit board by gently popping it out of its connector.

Step 7 — Lens Assembly



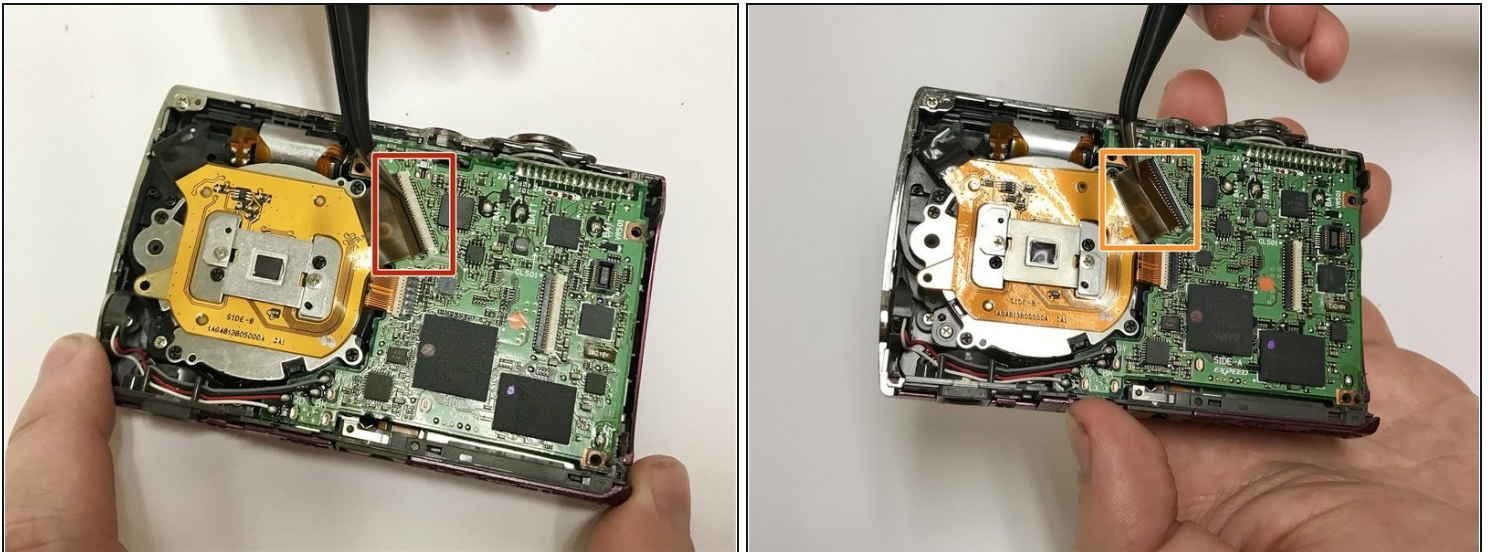
- Using a Phillips #000 screwdriver, remove the four 4-mm screws from the metal place.

Step 8



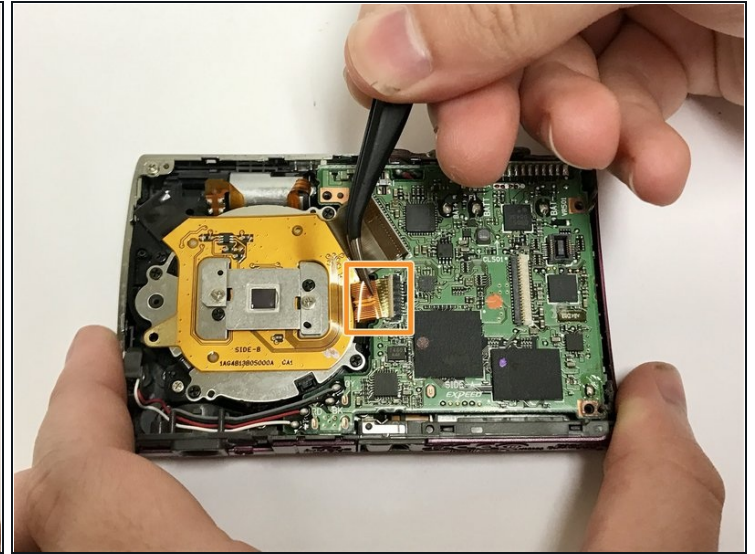
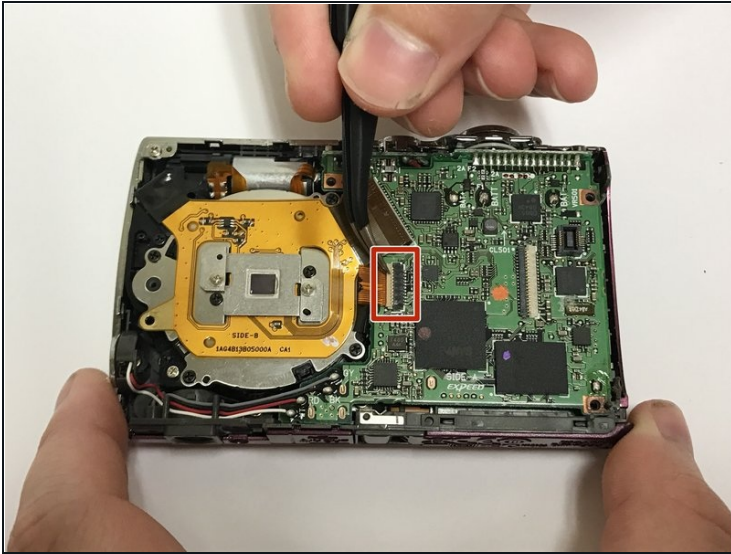
- Lift the plate from the camera to reveal the motherboard.
 - ① Once the plate is removed, the metal attachment for the camera strap on the side of the camera will no longer be secured to the device, and should be set aside.

Step 9



- Use [tweezers](#) to lift the black retaining flap for the larger ribbon cable connecting the motherboard to the lens.
- Continue using the tweezers to gently pull the ribbon cable out of the ZIF connector.

Step 10



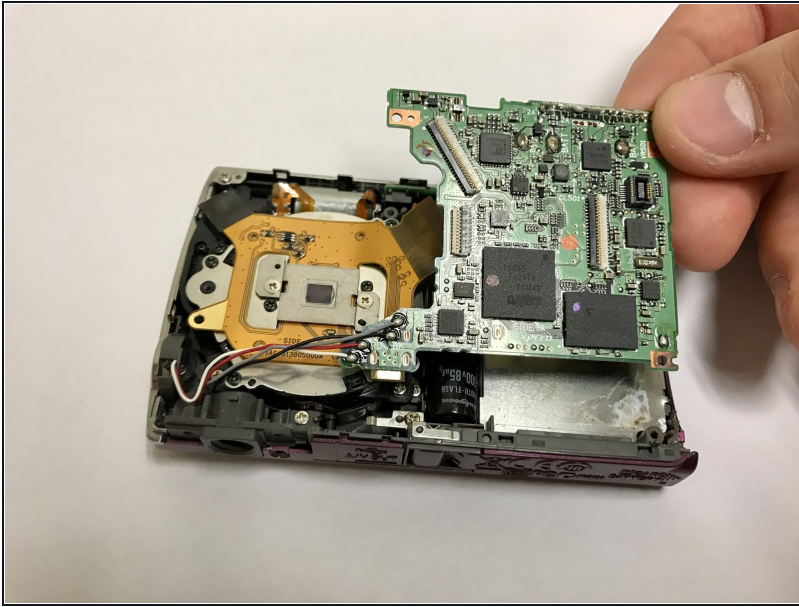
- Use tweezers to lift the beige retaining flap for the smaller, orange ribbon cable that attaches the motherboard to the lens.
- Use tweezers to gently pull the orange ribbon cable from the ZIF connector.

Step 11



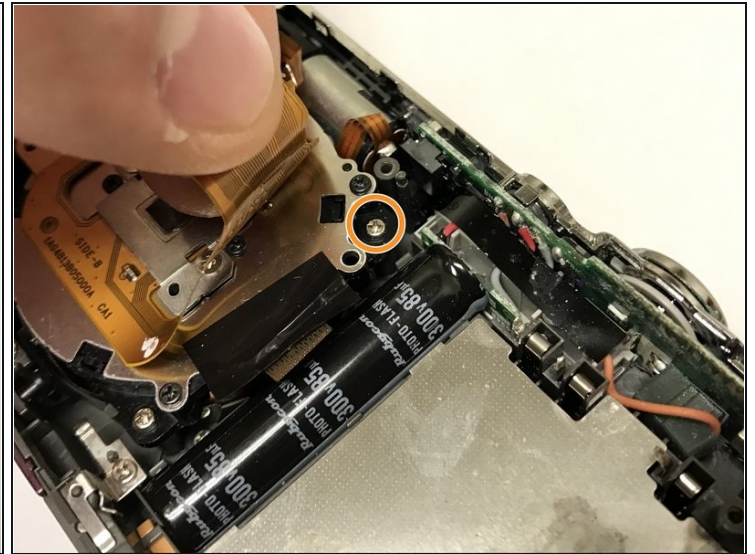
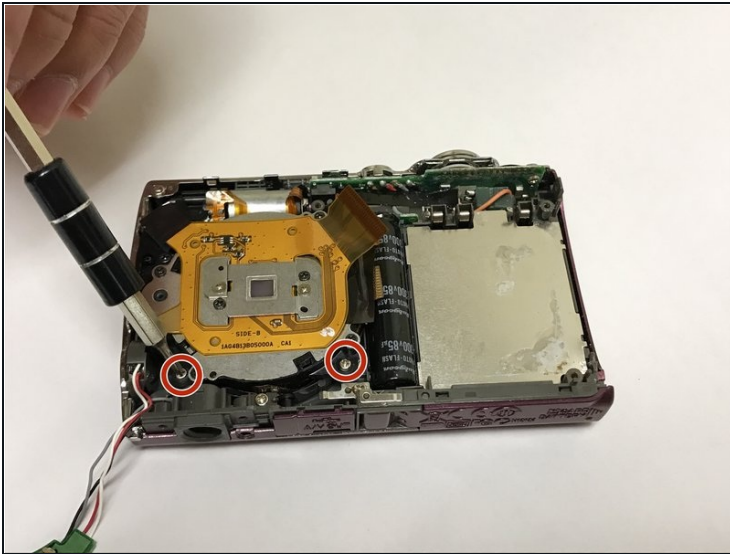
- Remove the solder using a soldering iron by following the instructions in [this guide](#).

Step 12



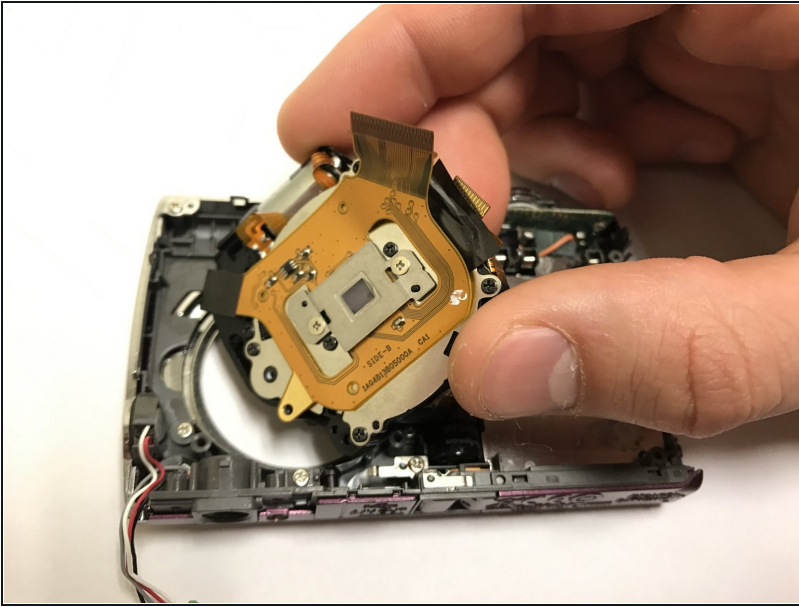
- Lift the motherboard from the camera to reveal the lens assembly.
- ① The motherboard is still attached to the camera by the wires connected to the speaker and mic.

Step 13



- Using a Phillips #000 screwdriver, remove the two visible 5-mm screws that attach the lens to the camera.
- Remove the third 5-mm screw by carefully lifting the large ribbon cable that is attached to the lens.

Step 14



- Lift the lens assembly from the camera.

To reassemble your device, follow these instructions in reverse order.