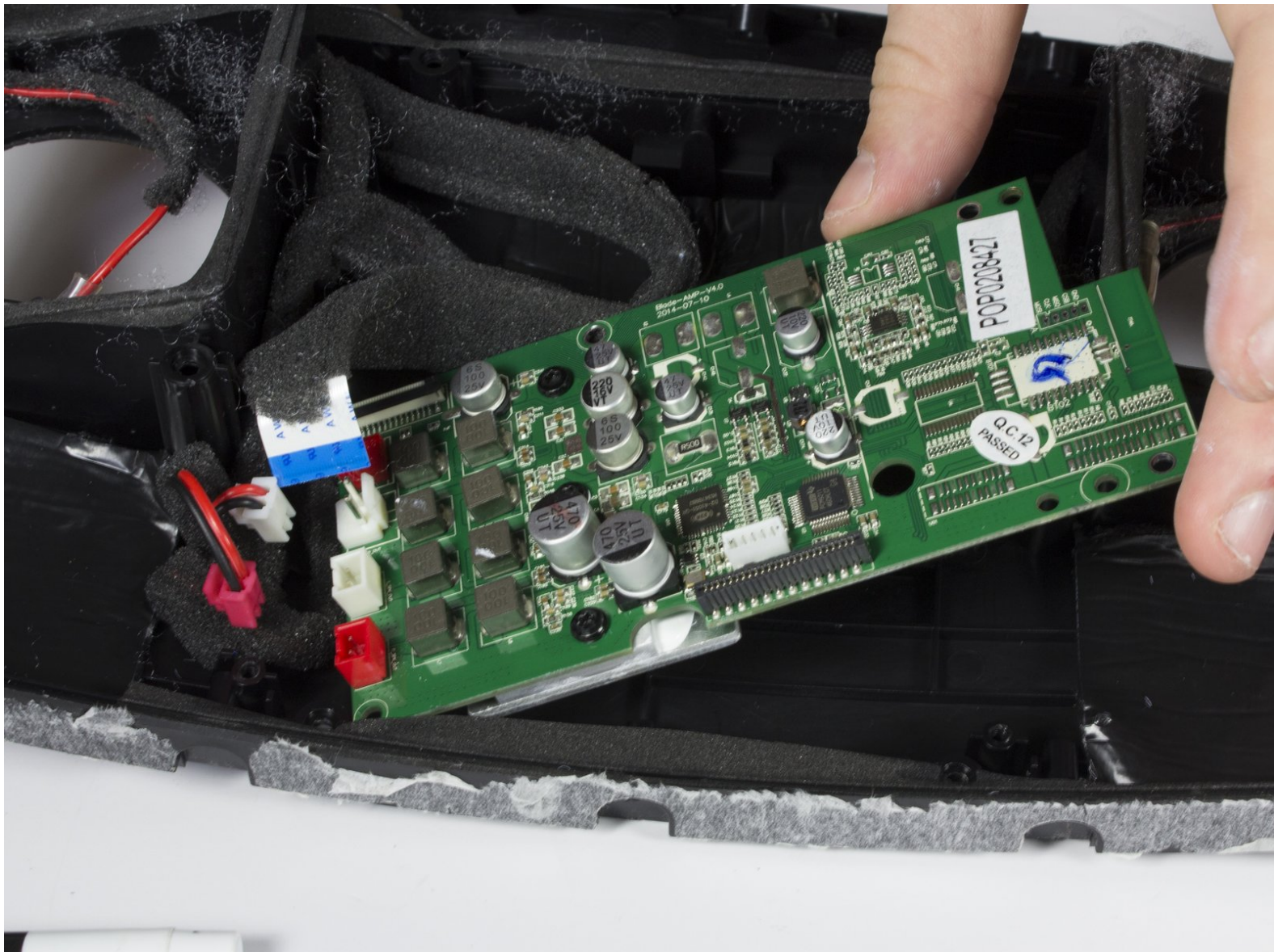




Monster Soundstage S2 Logic Board Replacement

Remove and replacing logic board from Monster Soundstage S2 speaker.

Written By: Shaw Hughes



INTRODUCTION

This guide will aid you in the replacement of the logic board in the speaker.



TOOLS:

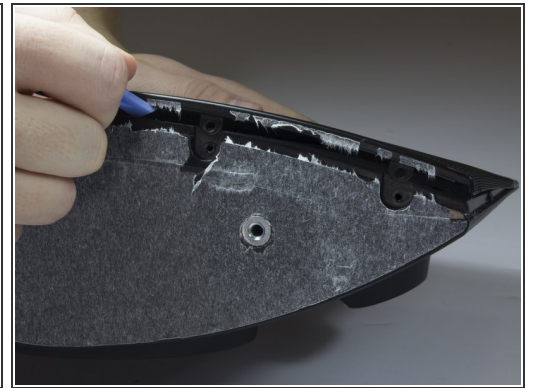
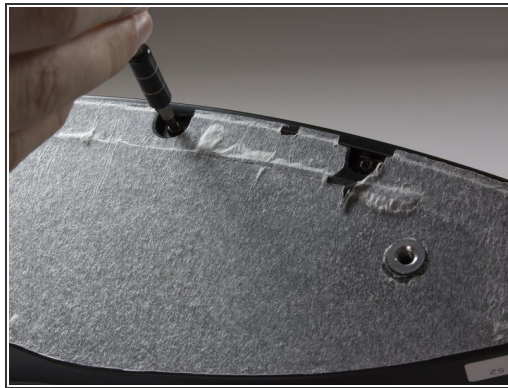
- [Spudger](#) (1)
 - [iFixit Opening Tools](#) (1)
 - [64 Bit Driver Kit](#) (1)
-

Step 1 — Speaker Grille



- Use a spudger or your fingers to pry off and remove the rubber pad on the bottom of the speaker.

Step 2



- Remove the five 10mm screws with a TR 10 screwdriver.
- Use a spudger to break the remaining adhesive holding the grille to the speaker body.

⚠ Be sure you don't bend the grille; it is not free from the speaker yet.

Step 3



- Flip speaker around and use a plastic opening tool to remove the top panel from the speaker.

Step 4



- Use a plastic opening tool to remove the foam and uncover four more screws.
- Use a TR 10 screwdriver to remove the five 10mm screws on the top of the speaker.

Step 5



- Carefully remove the top cover.

⚠ Be careful not to tear or stress the cable that provides power to the power LED.

Step 6




- Use a TR 10 screwdriver to remove two of the 10mm screws that secure the speaker grille.

⚠ Do not attempt to remove the grille just yet.

Step 7



- With the top panel removed, use a spudger to remove the display panel.

 The clips on the display panel are quite fragile. Pry up both edges of the display before attempting removal.

- Use a TR 10 screwdriver to remove the four final 10mm screws securing the speaker grille.

Step 8



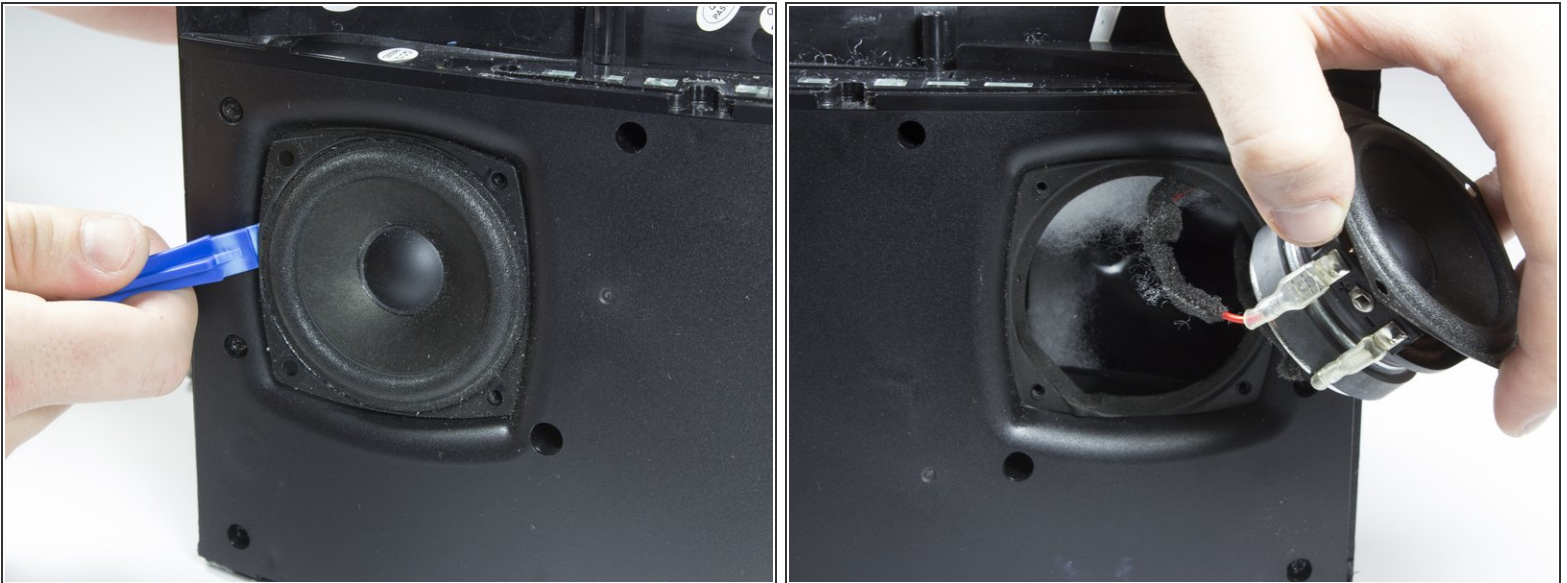
- Remove the front speaker grille.

Step 9 — Front Speakers



- After removing grille, you will see the speakers.
- Remove the eight 10mm screws that surround the speakers. There will be four around each speaker.

Step 10



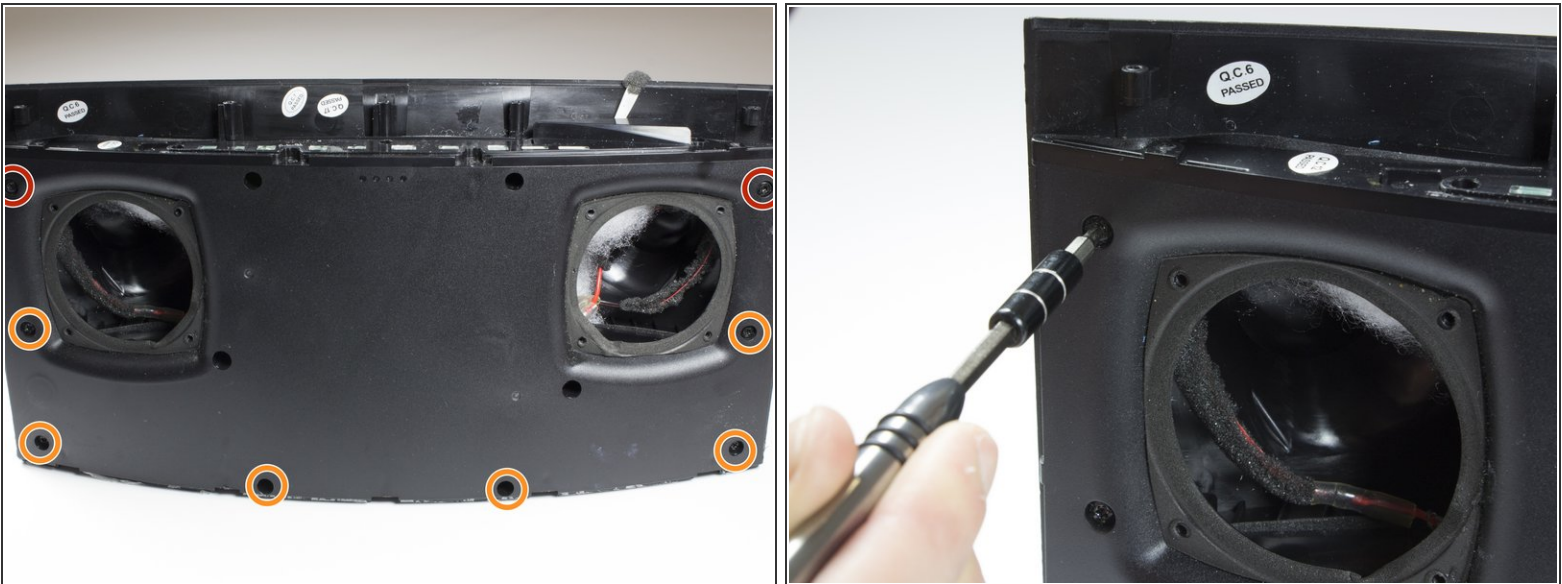
- Carefully lift each speaker from the housing. It may be necessary to break a light adhesive seal.
- ⚠ Be aware of the two wires that are connected to each speaker.
- Set each speaker beside the main housing.

Step 11



- Carefully but firmly unplug the two wires from each driver.
- The front speakers can now be removed.

Step 12 — Front Panel



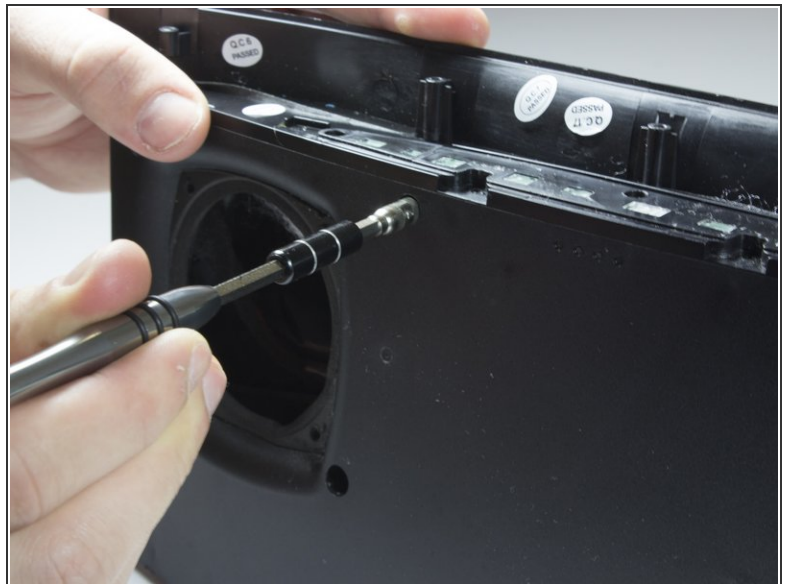
- Identify the eight screws around the border of the front panel.
- Using the TR 10 driver, remove the two 8mm screws.
- Using the TR 10 driver, remove the six 12mm screws.

Step 13



- Use a 5 mm hex driver to extend the TR 10 driver. This allows the driver to access screws with deeper countersinks.

Step 14



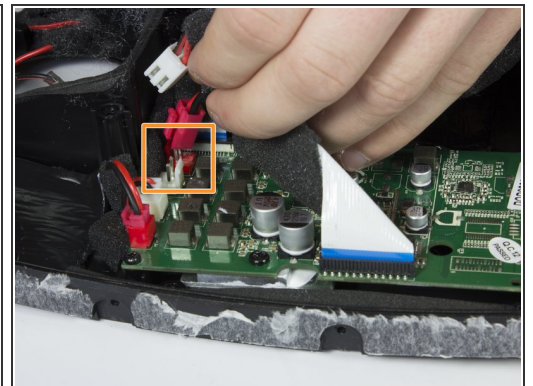
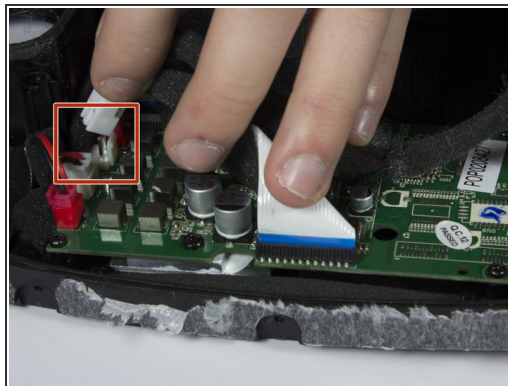
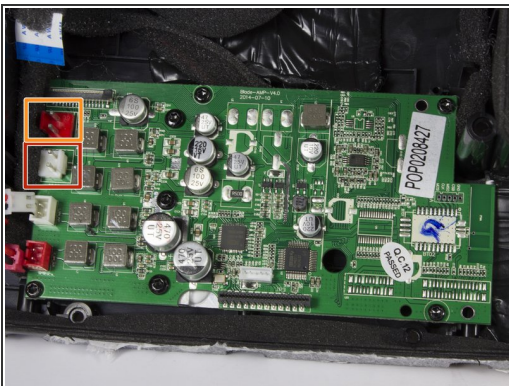
- Identify the remaining four screws in the front panel.
- Use the extended driver from the previous step to remove the four 12mm TR 10 screws.

Step 15



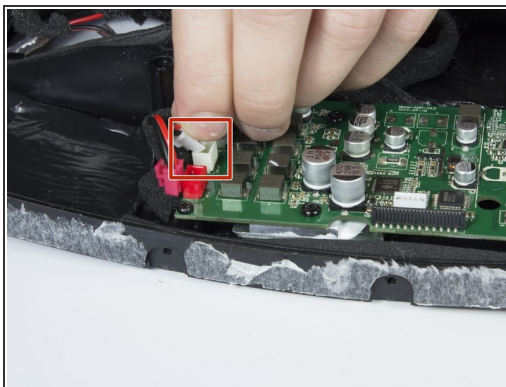
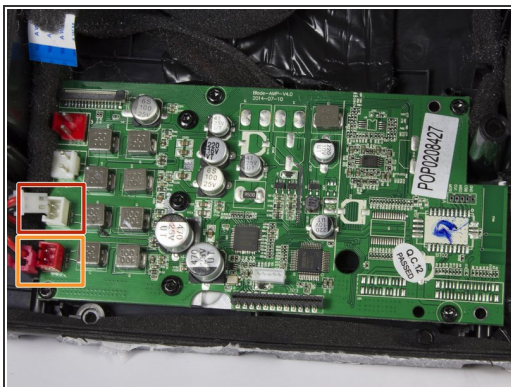
- Gently pull the front panel away from the back panel.
- ⚠ There are wires that connect the front and back panels. The two sides can be safely folded away from each other and laid flat on the table.
- Remove the white sound dampening material from the speaker. Note the location of the material and set aside.

Step 16 — Logic Board



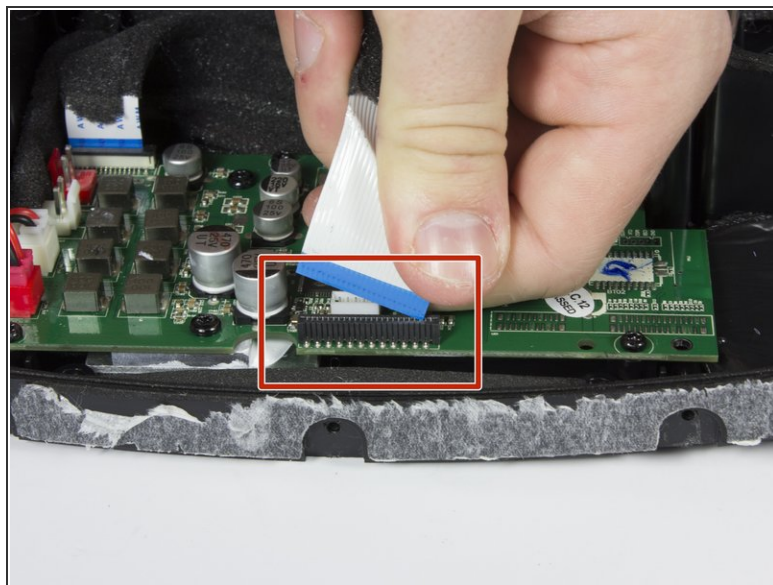
- Unplug the rear white connector from the logic board.
- Unplug the rear red connector beside the white one.

Step 17



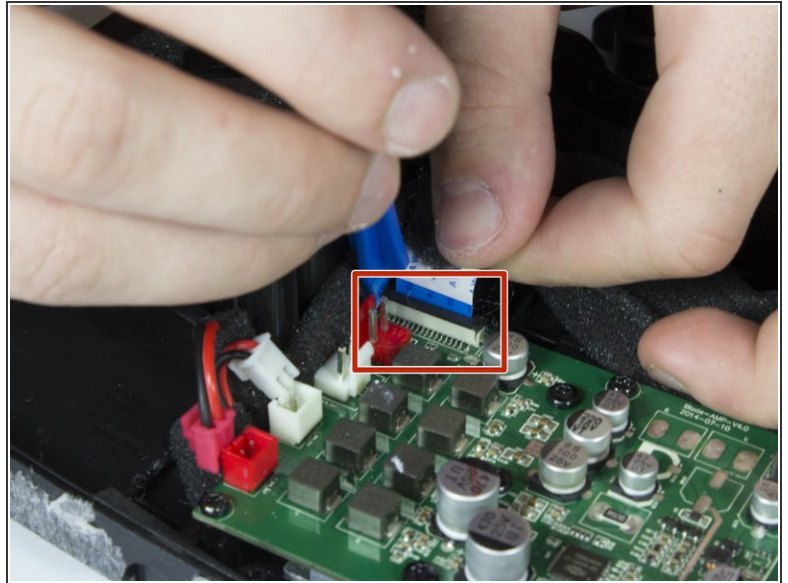
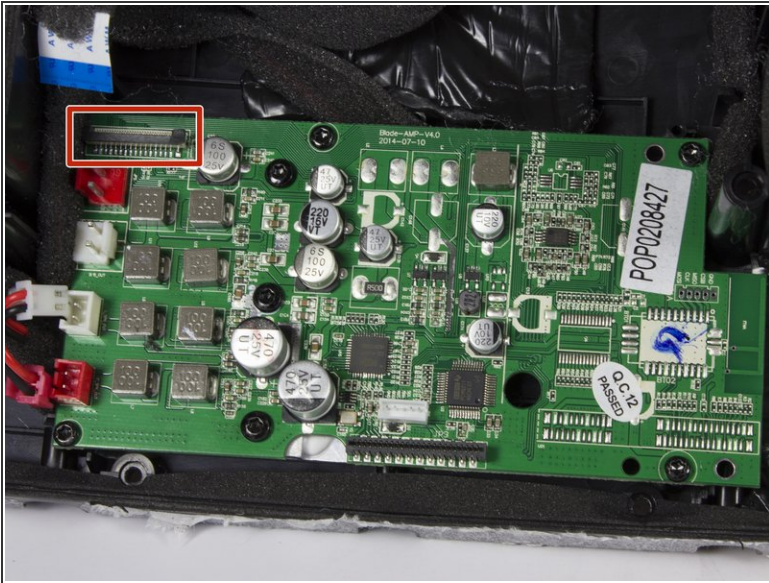
- Unplug the front white connector from the logic board.
- Unplug the rear white connector from the logic board.

Step 18



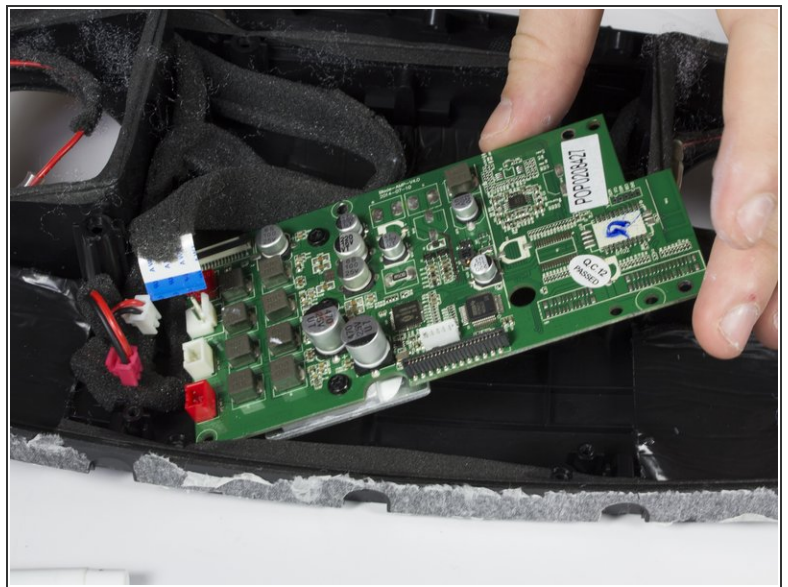
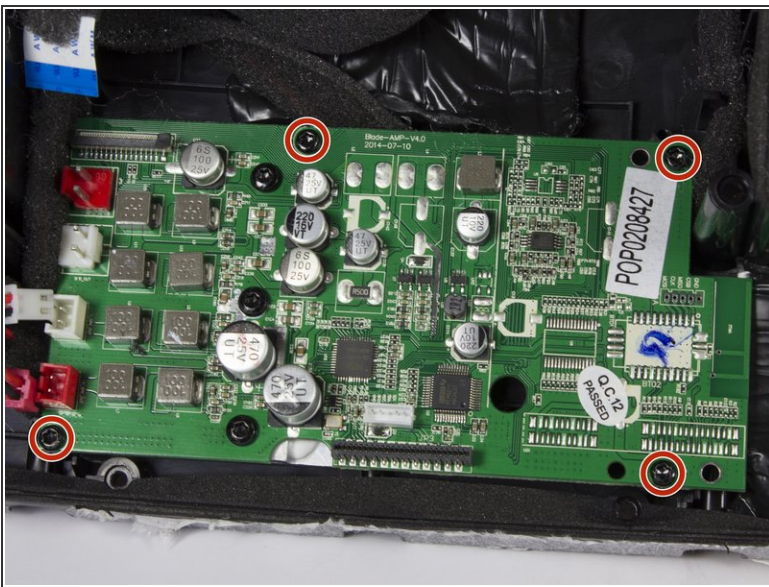
- Remove the front ribbon cable from the logic board.
- i** There is no retention mechanism on this connector.

Step 19



- Use a plastic opening tool to lift the brown ribbon cable retainer clip.
- The ribbon cable can now be removed from the logic board.

Step 20



- Use a TR 10 driver to remove the four 10mm screws that secure the logic board to the front panel.
- Remove the logic board from the speaker.

To reassemble your device, follow these instructions in reverse order.