



# Canon EOS Rebel XSi Front Panel Replacement

Remove and replace the back panel on your camera

Written By: Erik Mork



## INTRODUCTION

This replacement guide shows how to remove the device's front panel. This is necessary to access internal components that are located in the front.

---

### TOOLS:

- [Phillips #000 Screwdriver](#) (1)
  - [Tweezers](#) (1)
-

## Step 1 — Back Panel



- Squeeze the eyepiece between your index finger and thumb and lift up and off.

## Step 2



- Using the PH000 screwdriver head, remove the four 4 mm screws on the bottom of the camera.

## Step 3



- Using the PH000 screwdriver head, remove the two 3mm screws on the right side of the camera (from the LCD screen).

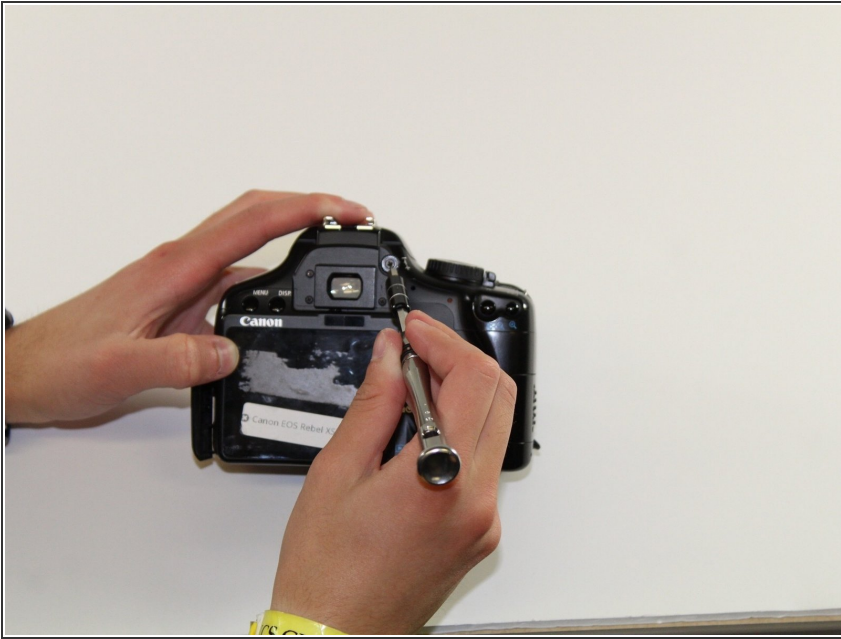
## Step 4



- Remove grip by slowly peeling off.

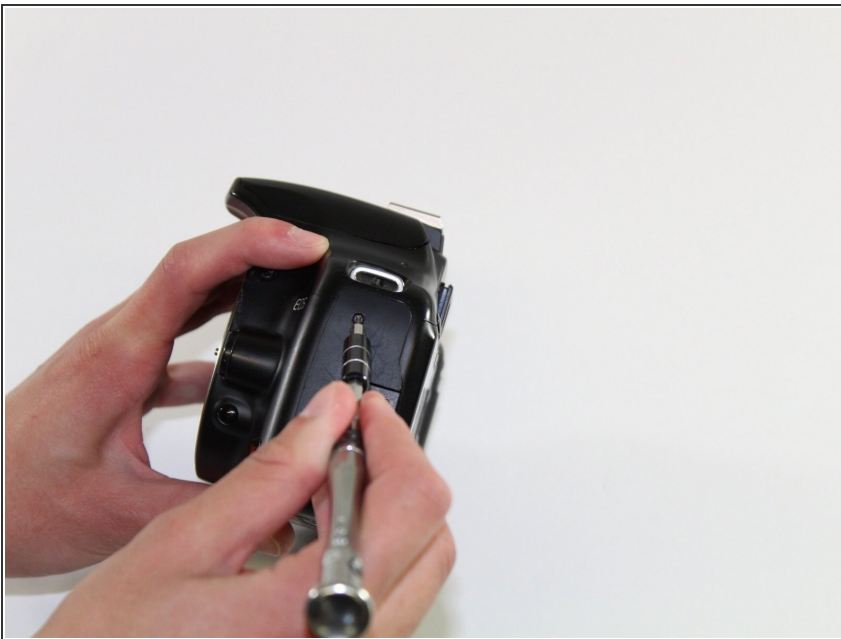


## Step 5



- Using the PH000 screwdriver, remove the four 4mm screws behind the eyepiece.

## Step 6



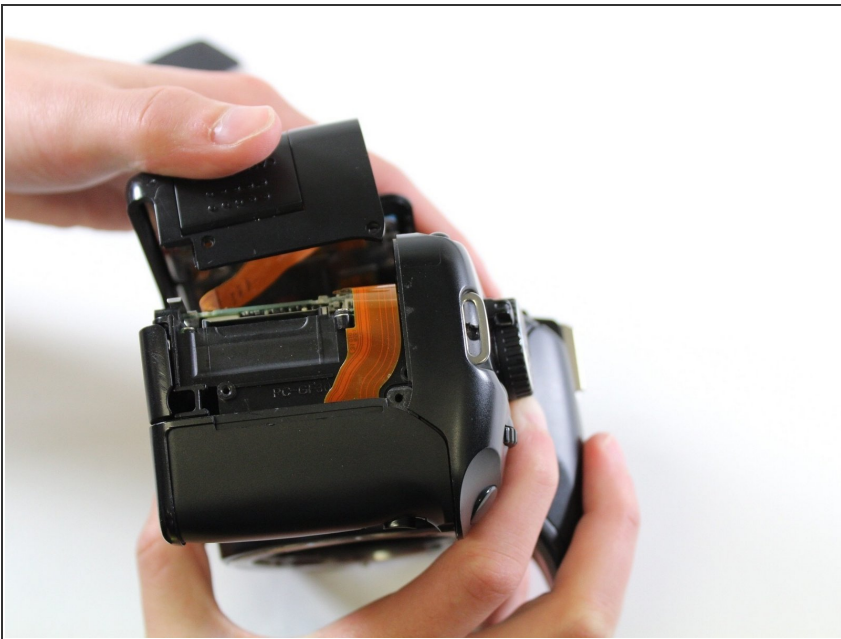
- Using the PH000 screwdriver head, remove one 4 mm screw on the left side of the camera (from the LCD screen).

## Step 7



- Remove the side panel by lifting off with fingers.

## Step 8



- Use hands to pry off the back panel.

## Step 9 — Front Panel



- Using the PH000 screwdriver head, remove the four 3mm screws on the front

## Step 10



- Remove front grip by gently peeling from the edge towards the center of the camera

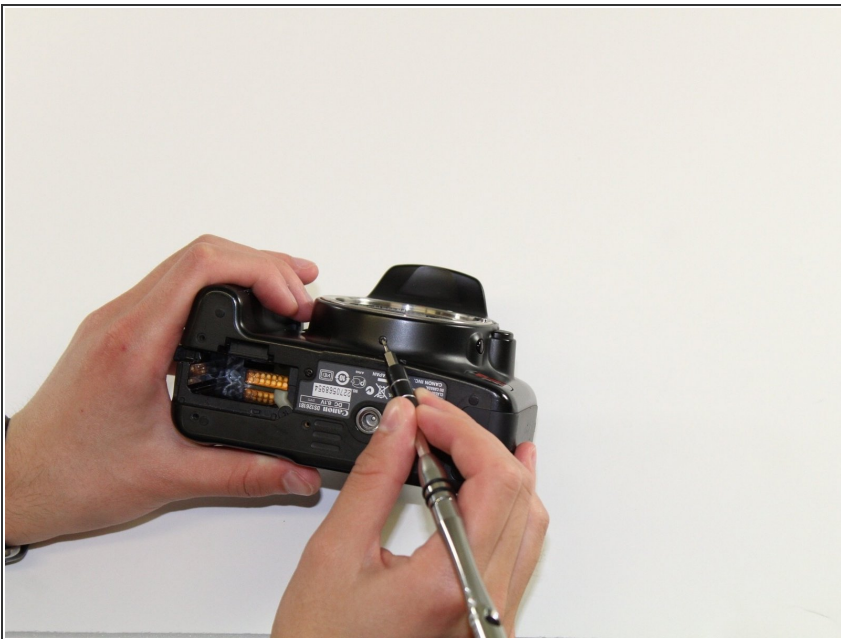


## Step 11



- Using the PH000 screwdriver head, unscrew the 3 mm screw that was under the grip

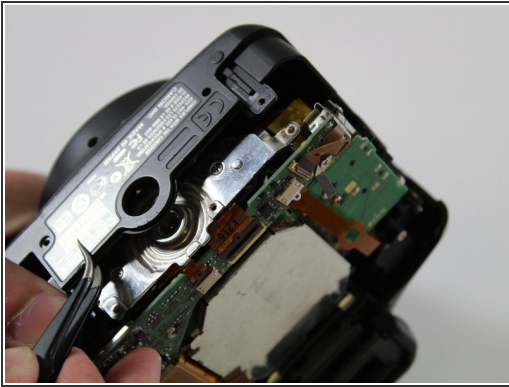
## Step 12



- Using the PH000 screwdriver, remove the 4mm screw at the bottom of the camera



## Step 13



- Remove the front panel by using tweezers to pry the panel over the metal ring protrusion

To reassemble your device, follow these instructions in reverse order.