



Neato Botvac 80 Battery Replacement

This guide will help you to remove the battery from your Neato Botvac 80.

Written By: Alexander Silfa



INTRODUCTION

This guide will show you how to replace a faulty battery.



TOOLS:

- [Philips Head Screwdriver: Size J1](#) (1)



PARTS:

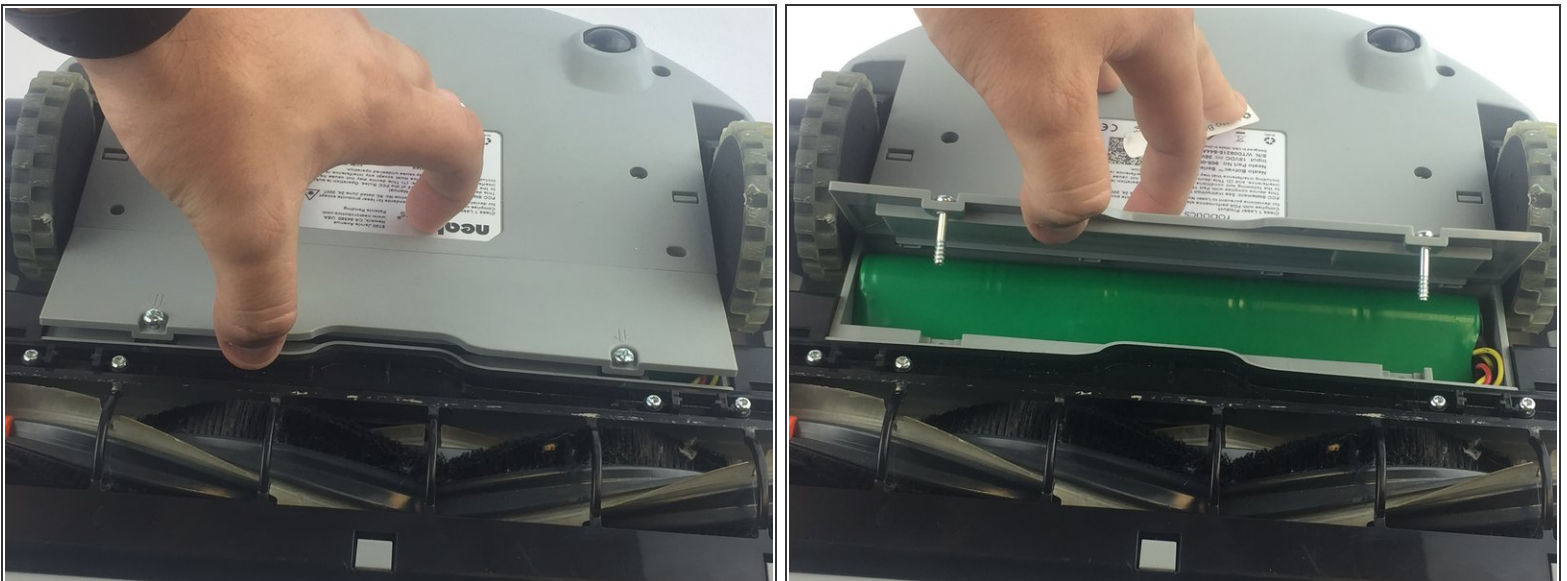
- [Neato Botvac 70e, 75, 80 and 85 Repalcement Battery](#) (1)

Step 1 — Loosening screws



- First, open the bin compartment and flip the switch to the off position.
 - Once you have done this, flip the robot over. Loosen the 2 screws, and lift the flap off
 - You will need to remove the 22.5mm bolts with a J1 Torx screwdriver.
- i** Screws cannot be removed from the cover.

Step 2 — Remove battery cover



- Gently lift to remove battery cover.

Step 3 — Removing battery



- Locate battery clip.
- Press down on latch with thumb and slide clip back.
- Remove the battery.

To reassemble your device, follow these instructions in reverse order.