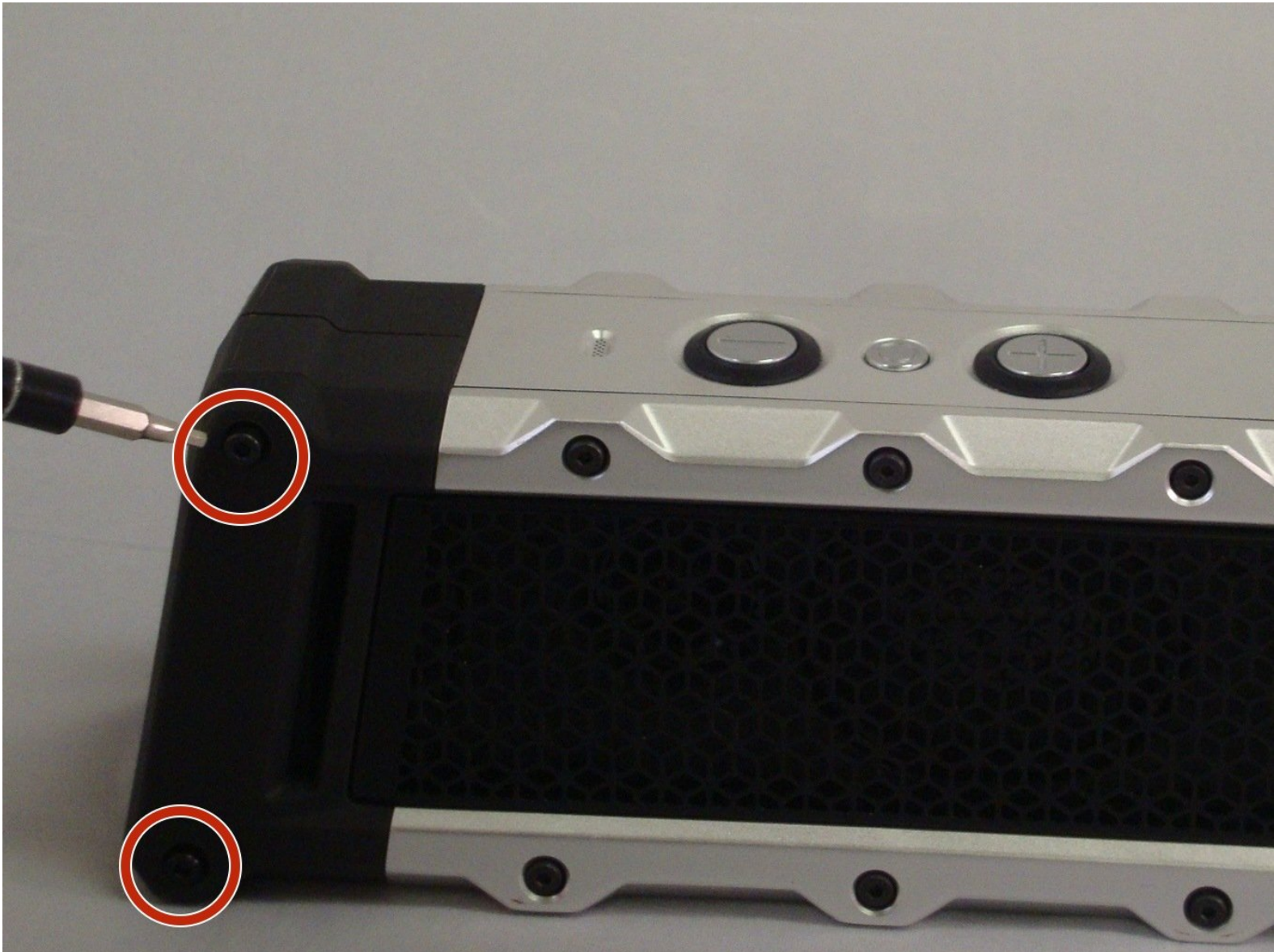




Fugoo Tough Speaker Replacement

Showing the consumer how to change the speakers.

Written By: Daniel



INTRODUCTION

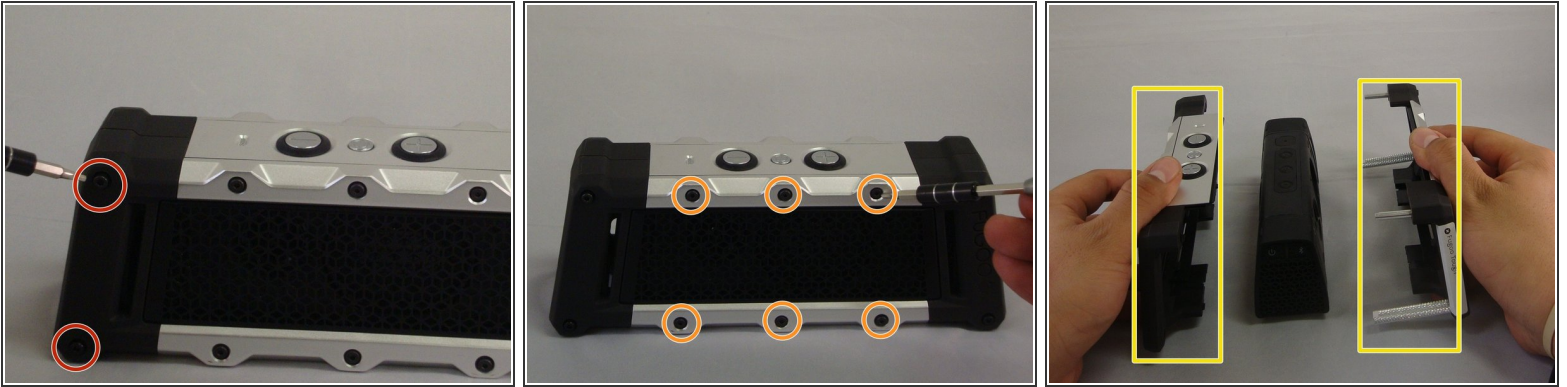
In this replacement guide, we will be showing the consumer how to correctly replace the inner speaker of the device.



TOOLS:

- [Mako Driver Kit - 64 Precision Bits](#) (1)
 - [iFixit Opening Tools](#) (1)
 - [Tweezers](#) (1)
-

Step 1 — Speaker



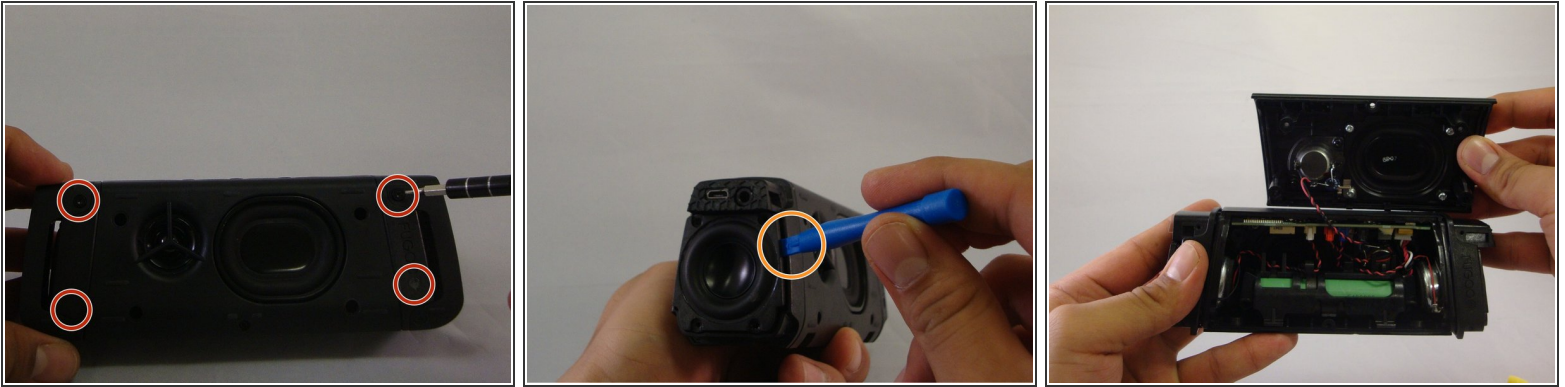
- Begin by unscrewing the four 10.72mm corner screws using the Hex 2.0 screwdriver.
- Using the Hex 1.5 screwdriver, remove the remaining six 5.79mm screws on the front of the speaker.
- Pull the front part of shell away from the back part of shell.

Step 2



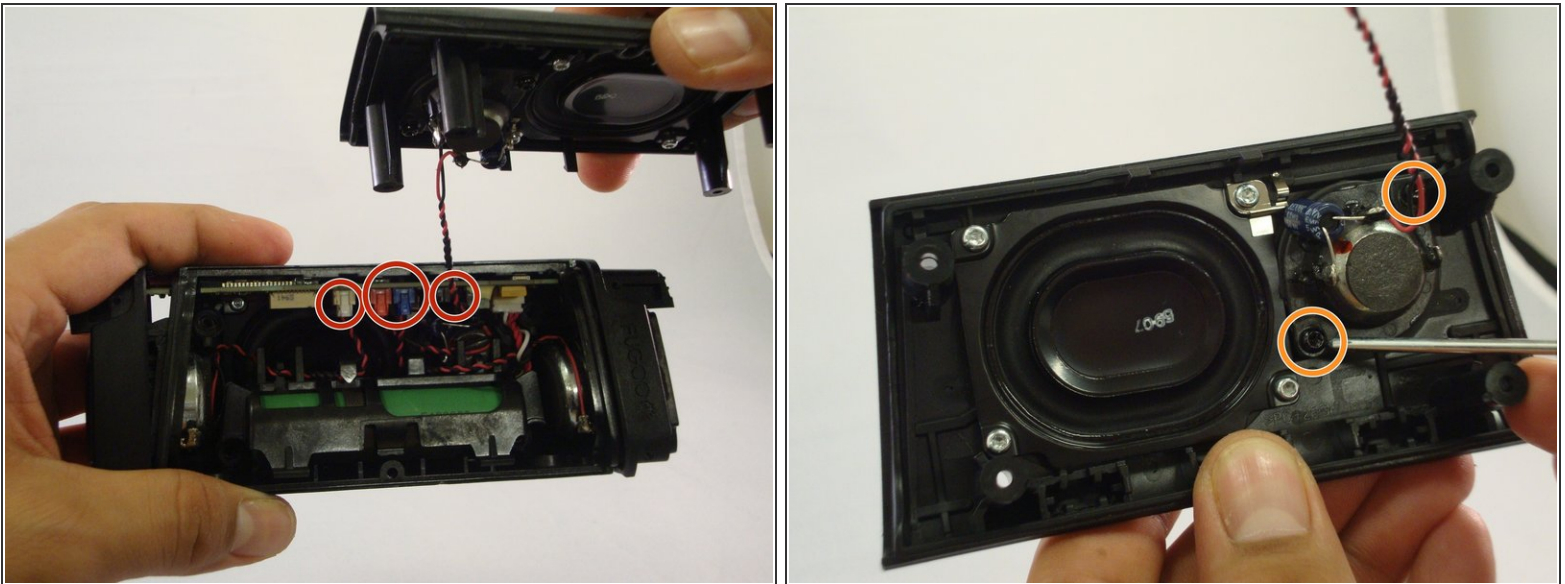
- Change to the Hex 1.3 head. Remove all 4-5.57mm screws on both speaker covers.
- Pull on the speaker covers to remove them.
- Rotate to side the speaker that has the charging port. Remove the 4-5.57mm screws of the facing you.
- Rotate the speaker 180 degrees and then remove 4-5.57 screws on the side speaker that has the power/bluetooth buttons

Step 3



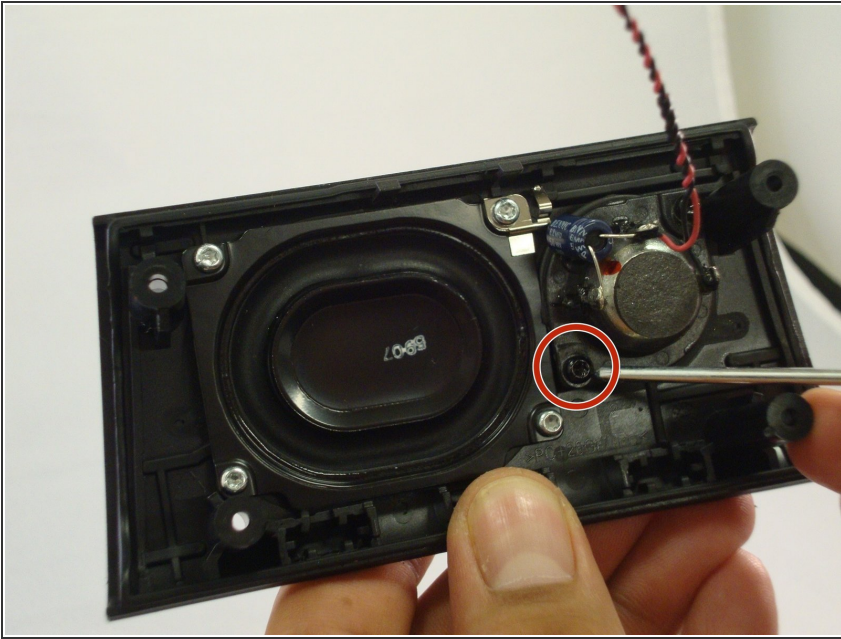
- Have back of speaker facing you, remove 5-12.70mm screws using 1/16 flat head screwdriver.
- Using the plastic opening tool you will be able to wedge back face of speaker off.

Step 4



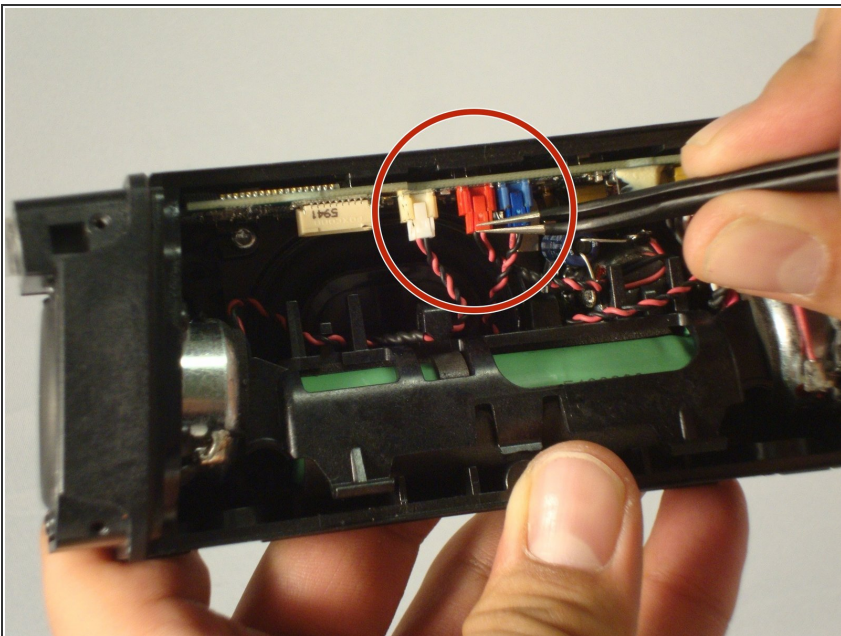
- The circuit board will be revealed, you will notice the various individual speaker connections to the circuit board.
- Remove black "clip" from the circuit board. Using the T9 screwdriver head remove the 2-7.20mm screws, and remove the speaker from the body of the device

Step 5



- At this point, the next step would be to replace the speaker.

Step 6



- Undo the clips that are now exposed inside of the speaker. The colors of these clips are white, red, blue.
- Once the clips are undone, you can freely remove and replace the corresponding speaker within the device.

To reassemble your device, follow these instructions in reverse order.