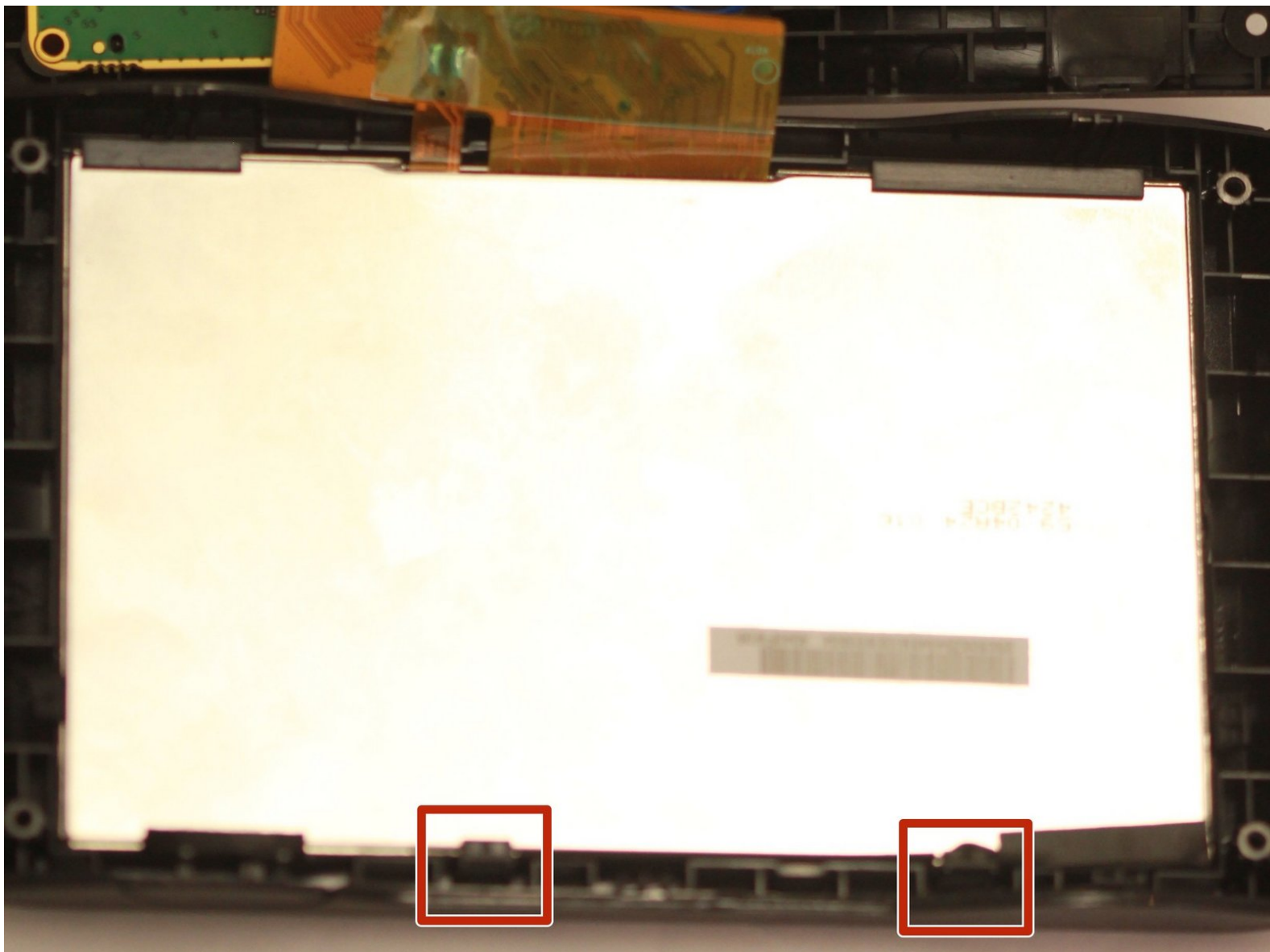




# Garmin Nuvi 42LM Screen Replacement

Follow the steps in this guide if you need to replace the Garmin Nuvi 42 LM screen.

Written By: Elina Zhukov



---

## INTRODUCTION

You will be removing several screws to get to the screen. Eventually, you will pop out the screen to replace it.

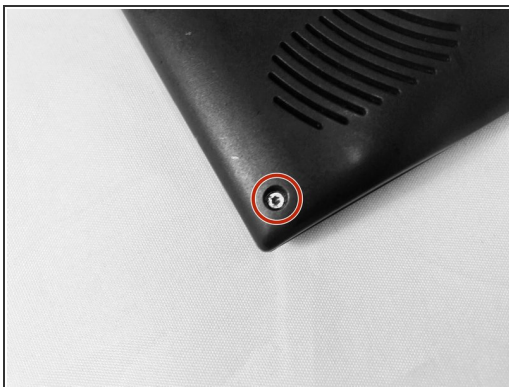
---



### TOOLS:

- [T5 Torx Screwdriver](#) (1)
  - [iFixit Opening Tools](#) (1)
  - [Portable Soldering Iron](#) (1)
-

## Step 1 — Back Cover



- Remove the four screws on the back of the GPS using the T5 Torx screwdriver.

## Step 2



- Pry the GPS open using a plastic opening tool.
- ⓘ When prying open the device, use caution to avoid damaging the motherboard.

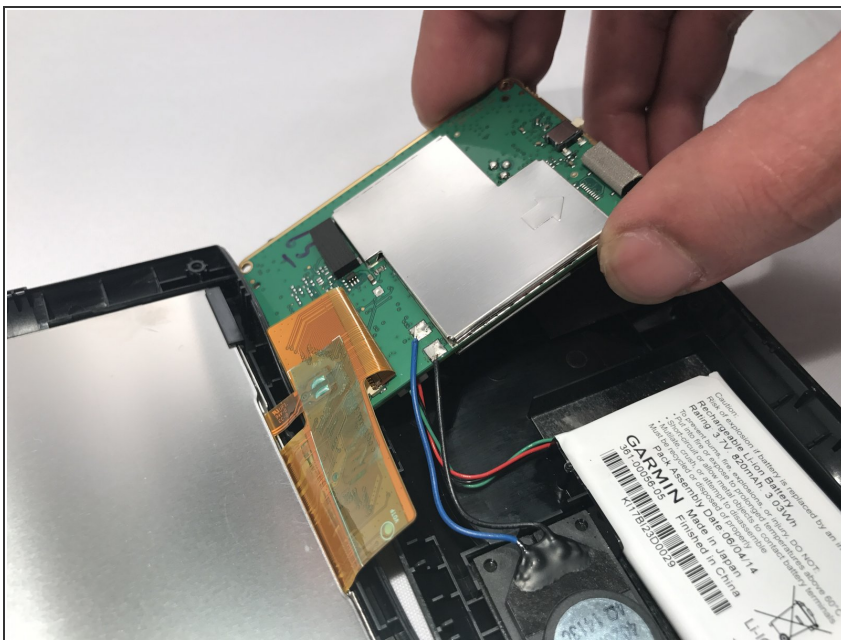
## Step 3 — Motherboard



- Using the T5 Torx screwdriver, remove the two screws located on the motherboard.

**i** There are two screws - one in the back and one in the front.

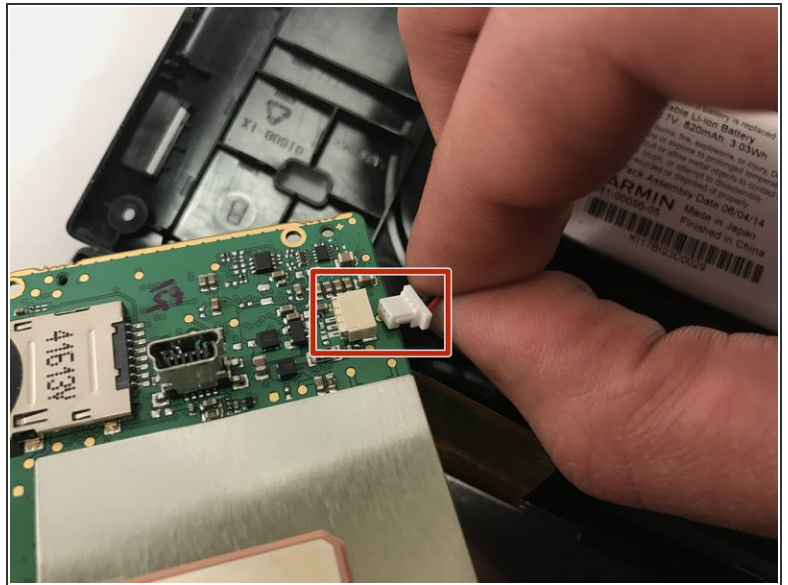
## Step 4



- Move the motherboard from from its designated location on the GPS.
- i** Do not pull on red, green, and black cables when repositioning the motherboard.

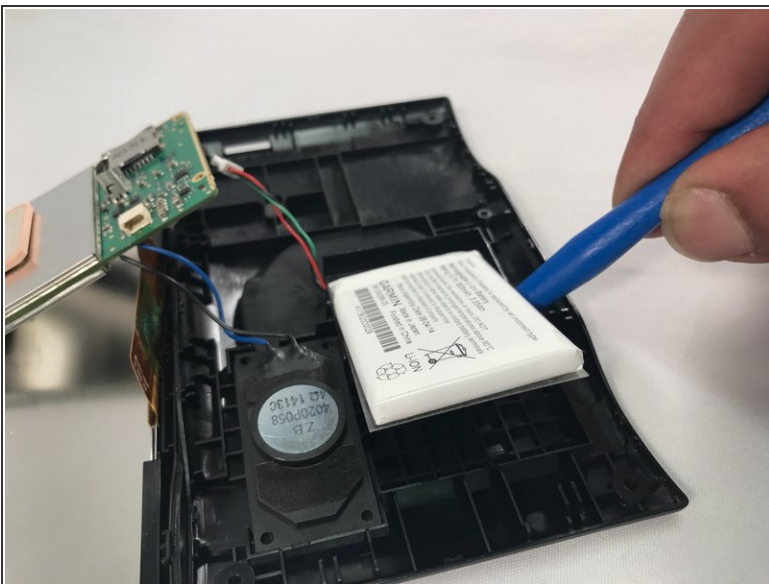


## Step 5



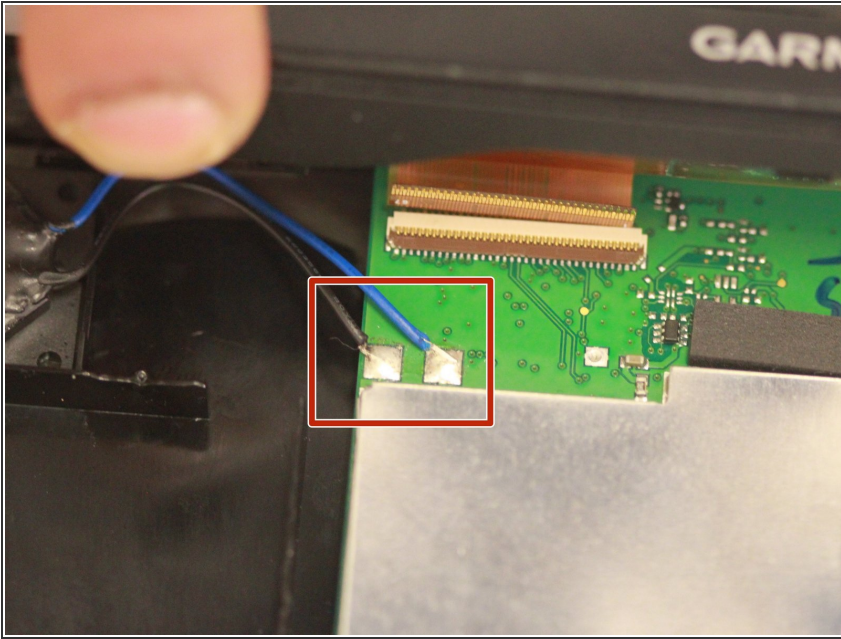
- Gently unplug the red, green, and black bundled cable to remove the battery.

## Step 6



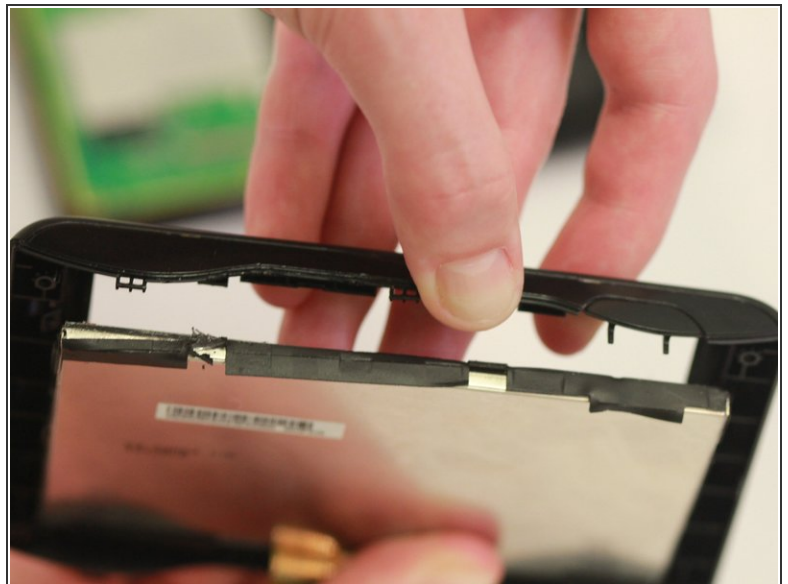
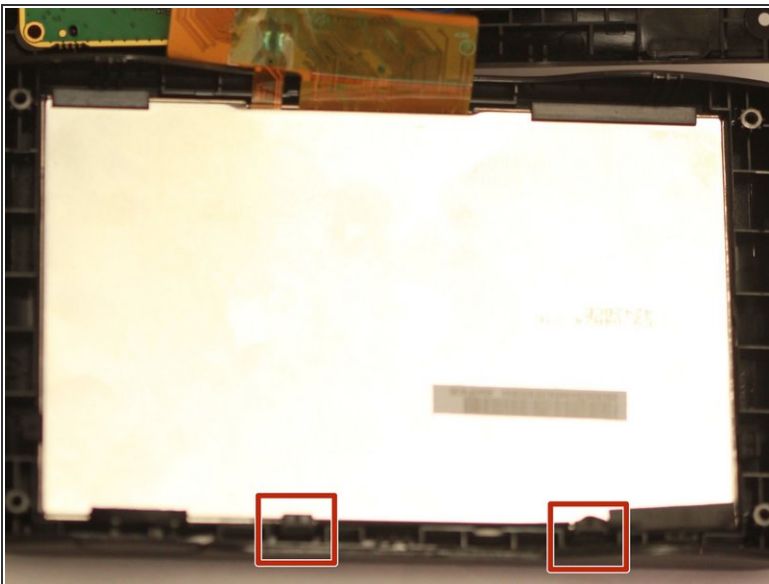
- Use blue plastic opening tool to carefully pry the battery from the GPS.
- ⓘ You might need to use additional force when prying because there is adhesive glue on the back of the battery.

## Step 7



- Using a soldering iron, desolder the black and blue wires connected to the motherboard.
  - Once the black and blue wires are desoldered, lift the motherboard out and away from the device.
- ❗ Check out this awesome guide on [how to solder and desolder connections](#).

## Step 8 — Screen



- Push out the screen by pulling back the black clips.
- ❗ The screen is attached to the motherboard and needs to be replaced with it.

To reassemble your device, follow these instructions in reverse order.