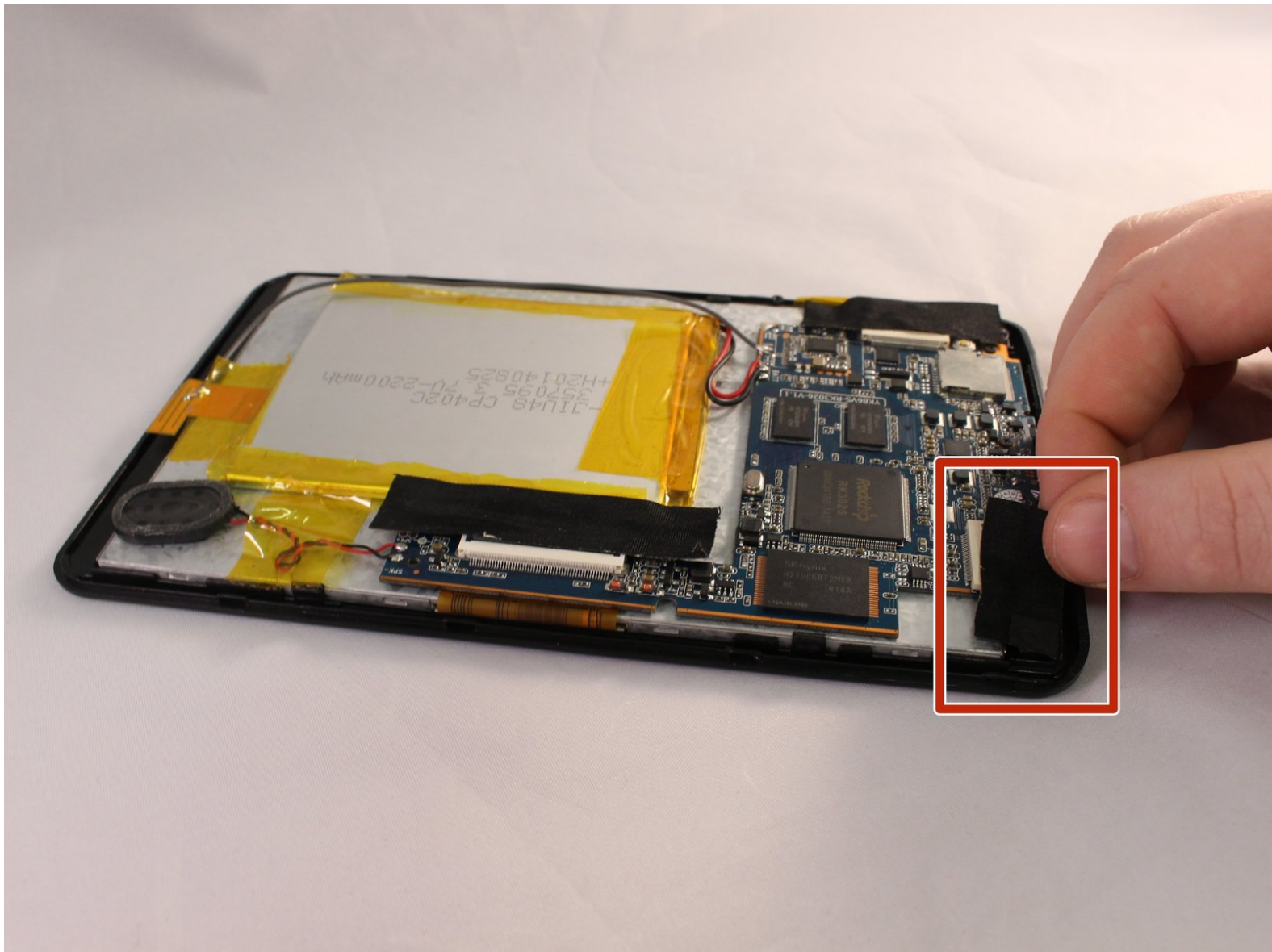




ProScan PLT7050 Camera Replacement

Tablet is taking blurry, dark photos, or not photos at all? It might be time to replace the camera

Written By: Valerie Landguth



INTRODUCTION

This is the camera replacement guide. If you find the camera of the ProScan PLT 7050 is broken, follow these steps to replace the camera.



TOOLS:

- [iFixit Opening Tools](#) (1)
 - [Phillips #00 Screwdriver](#) (1)
-

Step 1 — Open Device



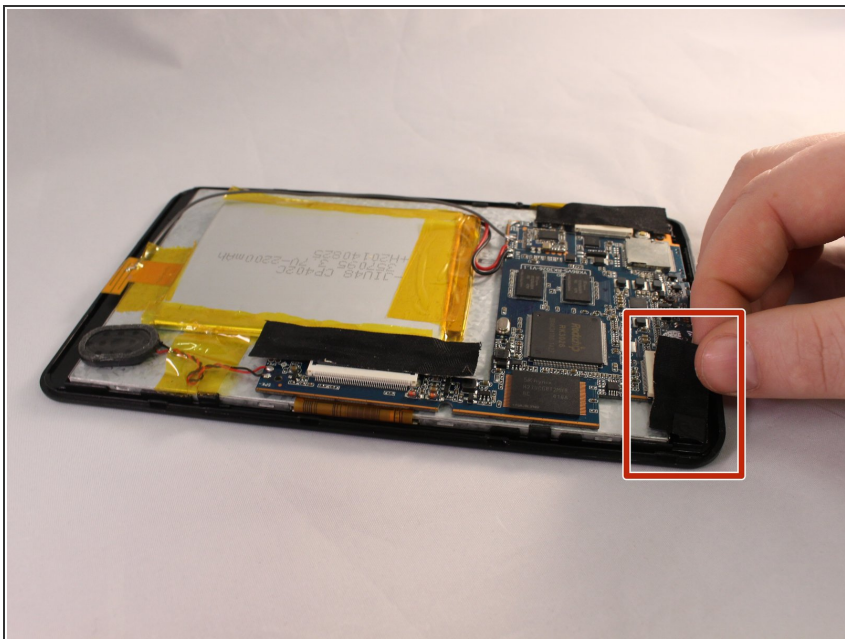
- Make sure device is unplugged and turned off while working on the device.
- Remove 2 Phillips head, 4.3 mm screws from the bottom side of the tablet with a PH00 screwdriver.

Step 2



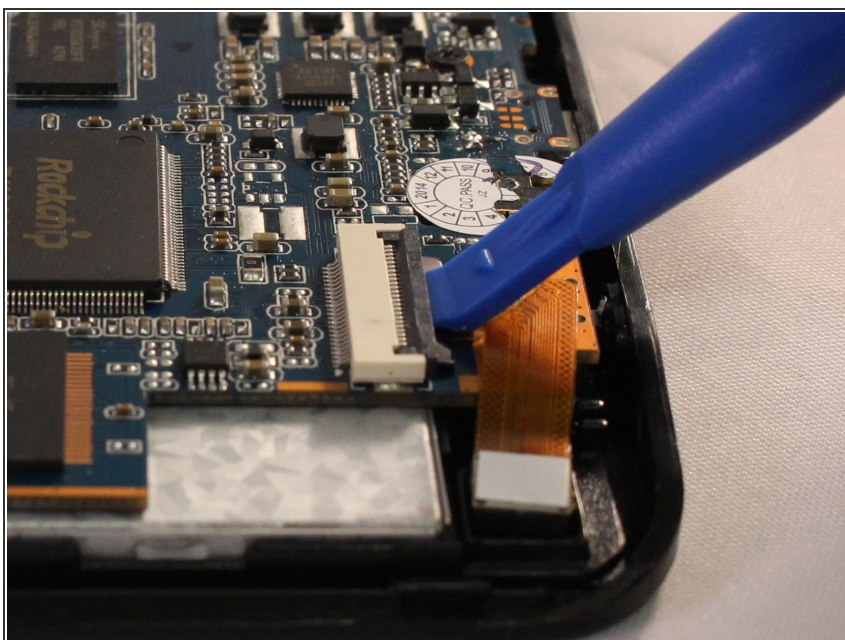
- Use the plastic opening tools to pry the back of the tablet open.
 - You may need to slide the tool along the sides of the device to get it to open. You might hear some popping noises, it is okay.
- i** May be helpful if you start by the microSD slot.

Step 3 — Camera



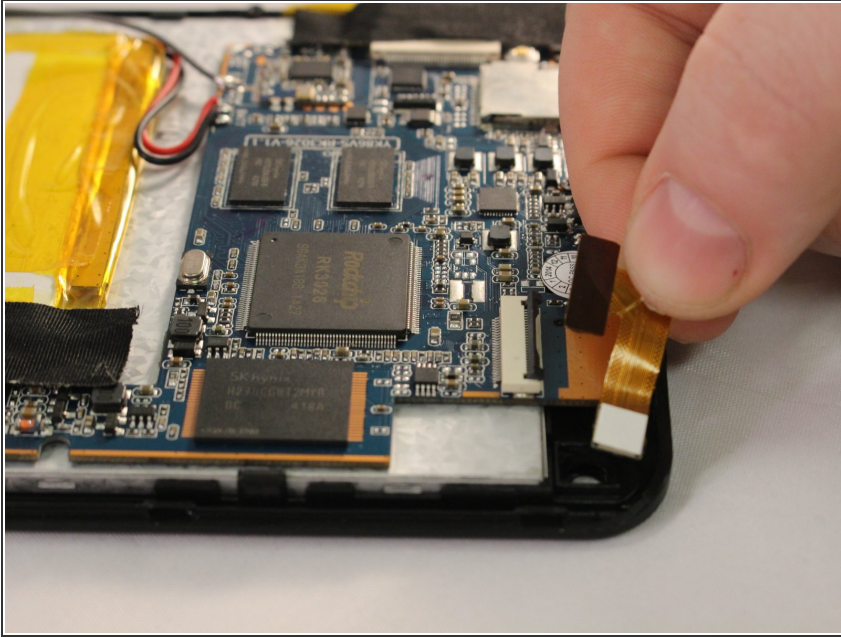
- Remove the black tape carefully.

Step 4



- Use the plastic opening tool to open the ZIF connector tab to release the camera's ribbon cable.

Step 5



- Remove the camera's ribbon cable.

To reassemble your device, follow these instructions in reverse order.