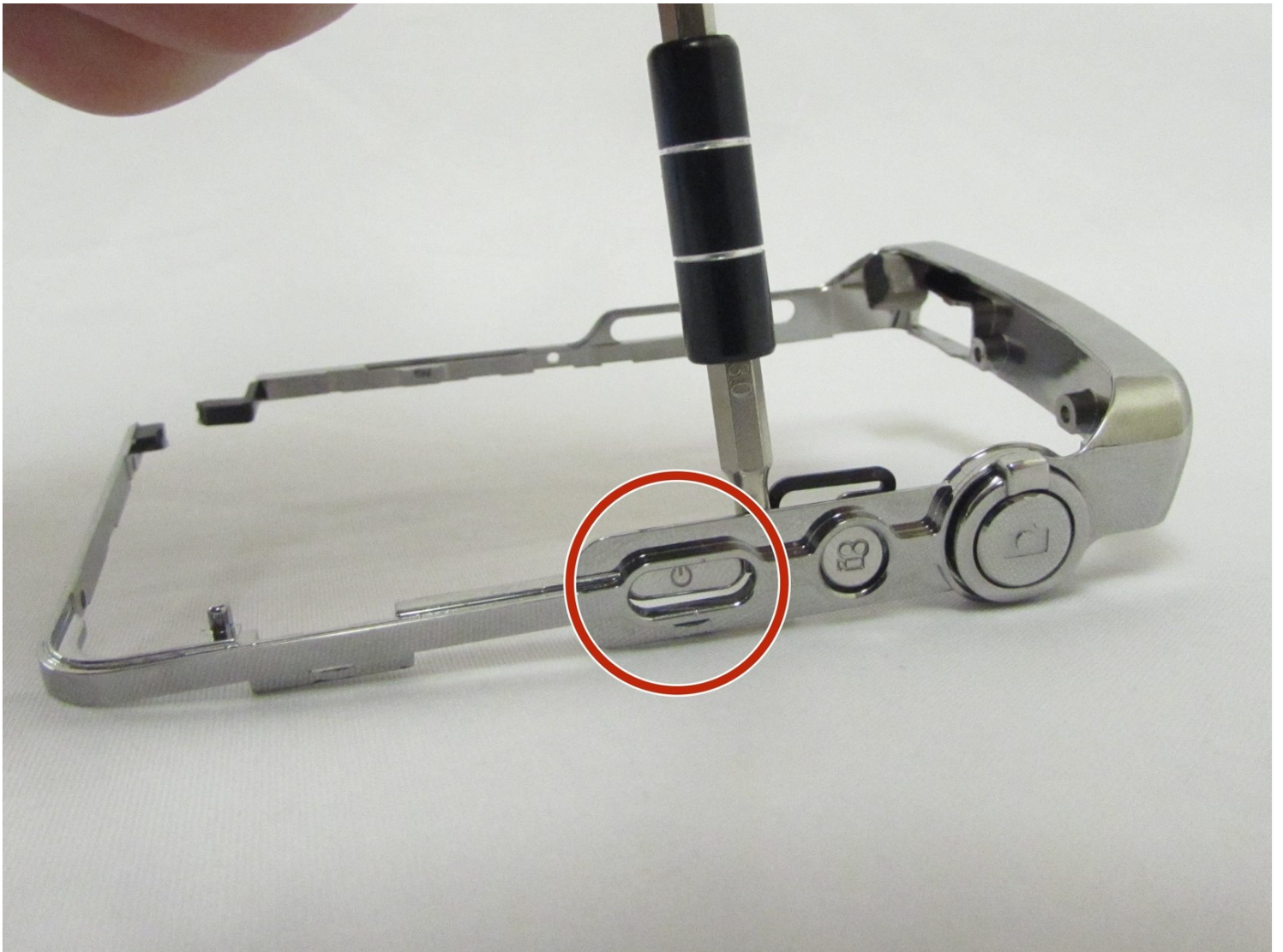




General Electric Create Jason Wu Power Supply Button Replacement

If your camera will not power on, one issue...

Written By: Kylan Hennessy



INTRODUCTION

If your camera will not power on, one issue could be the power supply button. This guide will demonstrate how to fix this issue.

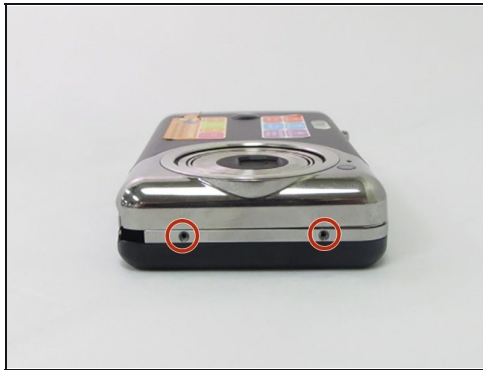
TOOLS:

[Phillips #00 Screwdriver](#) (1)
[iFixit Opening Tool](#) (1)
[Precision Tweezers Set](#) (1)
[Precision screwdriver kit \(Phillips bits\)](#) (1)

PARTS:

[Magnetic Project Mat](#) (1)

Step 1 — General Electric Create Jason Wu Casing Disassembly



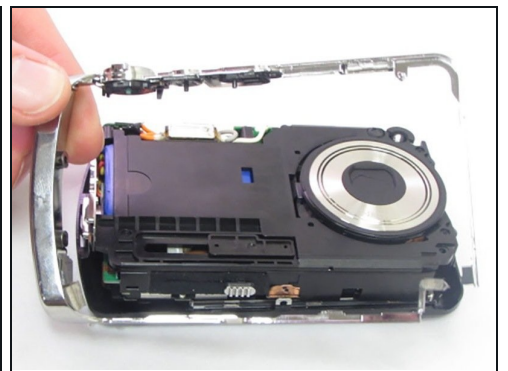
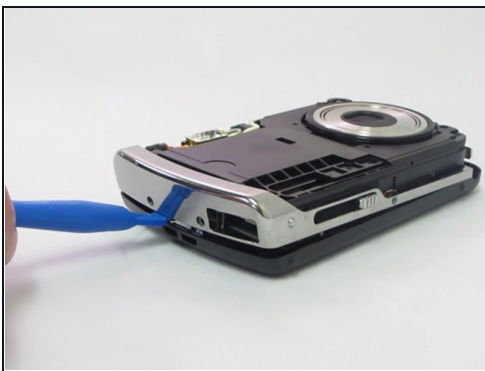
- Begin by removing the 5 screws (located: 2 screws on either side and 1 screw on the bottom) using the PH000 head in the Precision Phillips Screwdriver.
- ⓘ These screws were missing in our example. These screws should have been small Phillips PH000 screws 1.5mm in length.
- ⚠ These screws are very small. To keep from losing any pieces, place all small metals on a magnetic project mat.

Step 2



- After the screws are removed, pull the front casing up and away from the camera.
- ① If the casing is difficult to remove, use a plastic opening tool to gently pry up on the front as shown.

Step 3



- Using your hands or an opening tool, pry off the silver frame, taking special care at the top of the camera where the buttons are as it is a little harder to pry off.
- ① If the back casing is loose from the camera body, it may be easier to perform step 4 first, then accomplish this step. Proceed as your unit allows.

Step 4



- The last part of the casing to disconnect is the back that houses the LCD screen.
 - The screen is attached by a connection ribbon. Gently pull the casing and screen away from the camera body to disconnect the casing.
 - ⓘ The LCD screen is held onto the back casing by a small amount of adhesive. This may come loose during this process. Do not worry if they become separated.
- ⚠ This plug and the connection ribbon are fragile, try not to tear the connection ribbon when disconnecting.

Step 5 — Power Supply Button



- Locate the metal frame removed from around the camera in step 3.
- Lay the frame button side down or flat and gently pry the button out of place with the [3.0 flathead](#) bit or a pair of tweezers.

⚠ This is very brittle plastic so use extreme caution and minimal force.

- The button is secured to the frame by two small black rods pushed into the white colored portion of the button (see picture).

Step 6



i The button will pry off easily and shouldn't take much force

To reassemble your device, follow these instructions in reverse order.

