



Toshiba Satellite P205D-S8804 Keyboard Replacement

How to replace the Toshiba Satellite keyboard.

Written By: Caroline Camp



INTRODUCTION

This is a guide to replace a malfunctioning keyboard. This guide will teach you how to unscrew your keyboard and remove the ribbon cable to allow you to replace the keyboard.



TOOLS:

- [iFixit Opening Tools](#) (1)
 - [Phillips #0 Screwdriver](#) (1)
-

Step 1 — Keyboard



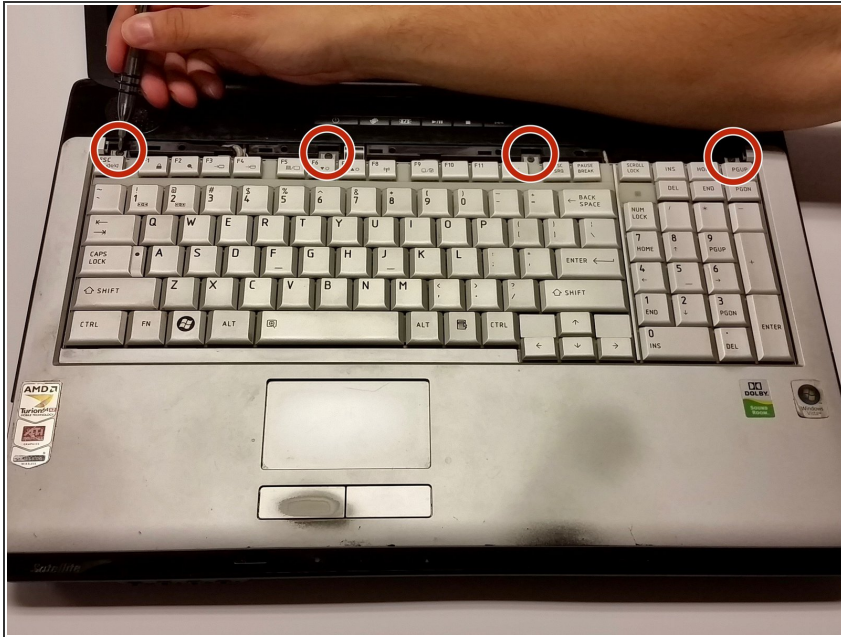
- Place the laptop with the screen facing you and grab the opening tool.
- Insert it into the top corner of the keyboard and slide it to the right along the length of the keyboard.
- *You will feel the popping sensation as it slides along.*

Step 2



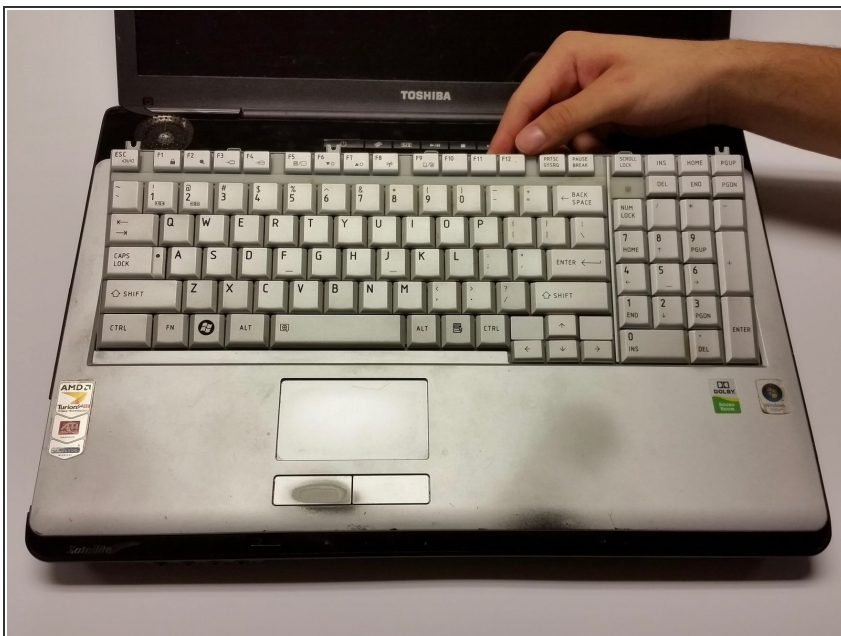
- Lit up the left side of the small plastic bar at the top of the keyboard.
- *Be careful when removing it, because you will need to apply a bit of force .*

Step 3



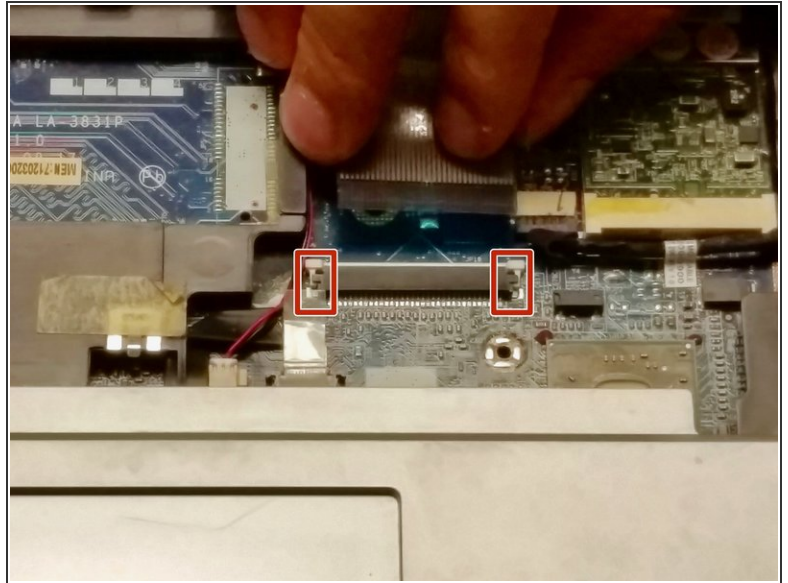
- Use a PH0 screwdriver to unscrew the 4 screws at the top of the keyboard.

Step 4



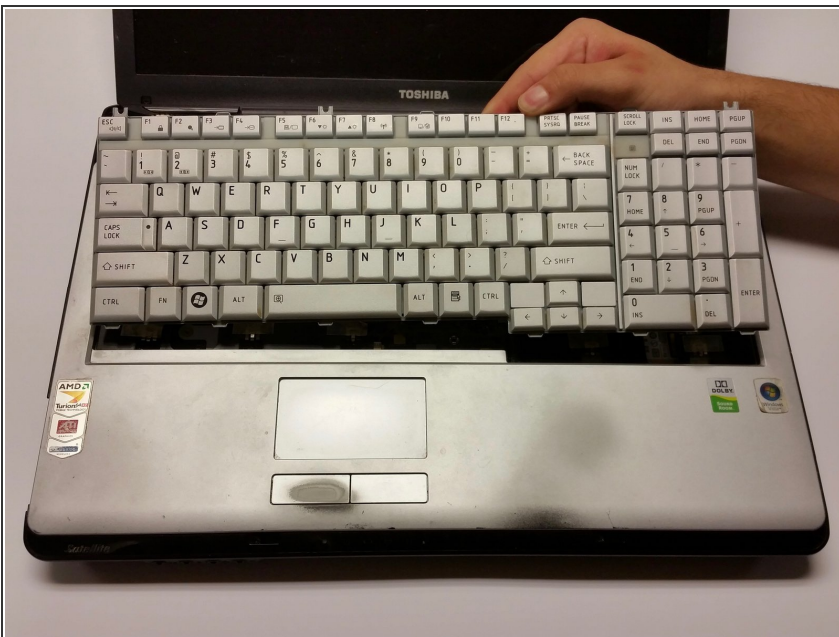
- Lift up the keyboard and pull it toward the screen.
- ⚠ *The keyboard will still be connected to the motherboard by a ribbon cable.*

Step 5



- To remove the ribbon cable, push upward on the small tabs located on either side of the ribbon.

Step 6



- Once the ribbon is released the keyboard can be removed .

To reassemble your device, follow these instructions in reverse order.