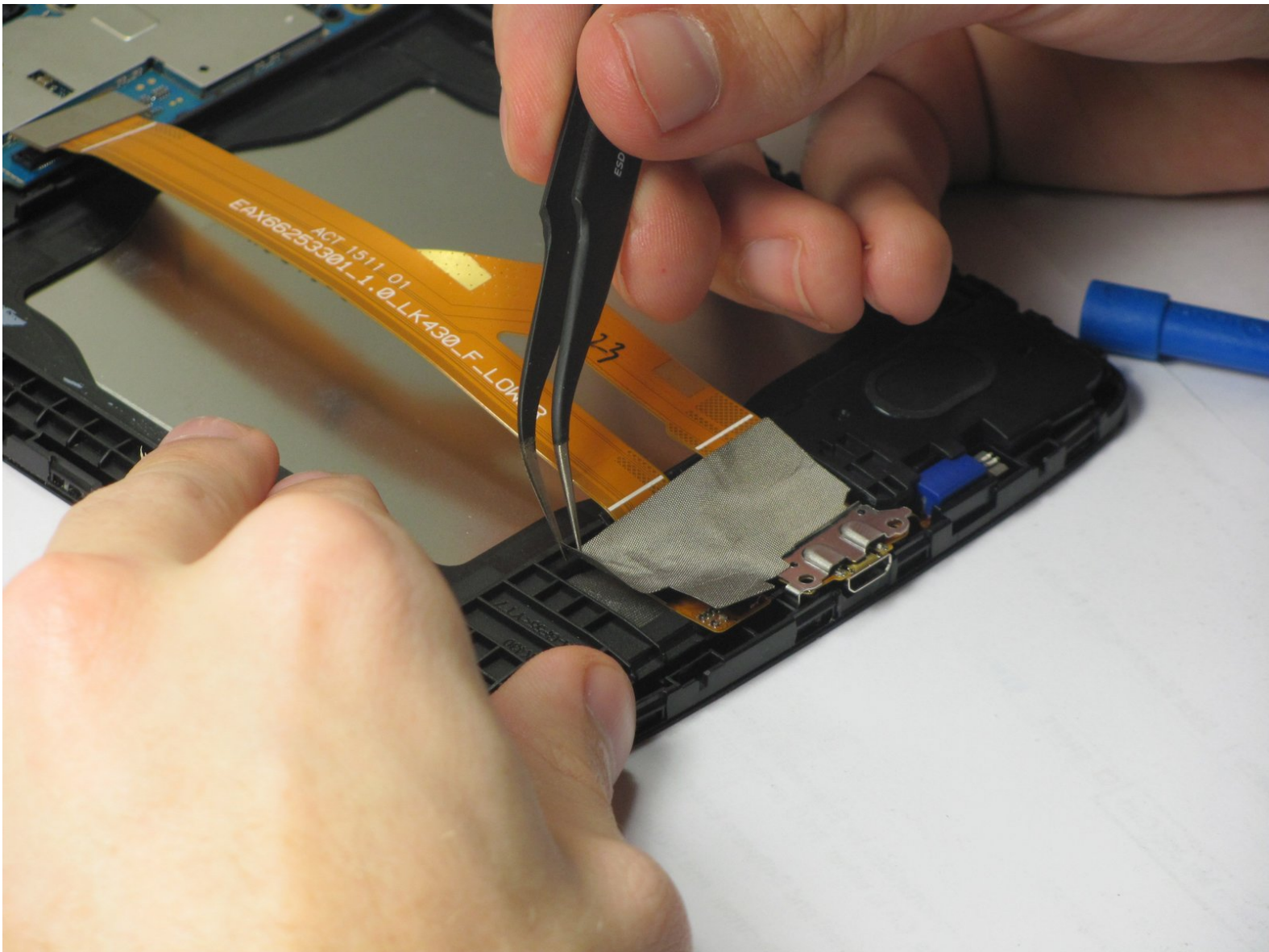




# LG G Pad F 7.0 Charging Port Replacement

This guide will walk you through the process of replacing the charging port located on the bottom of the tablet.

Written By: Erik





## TOOLS:

- [Tweezers](#) (1)
  - [Phillips #0 Screwdriver](#) (1)
  - [iFixit Opening Tools](#) (1)
-

## Step 1 — Charging Port



- Open up the SIM port, on the top right corner (screen face down).
- Press the SIM card (white plastic) to pop it out.
- Remove SIM card and set aside.

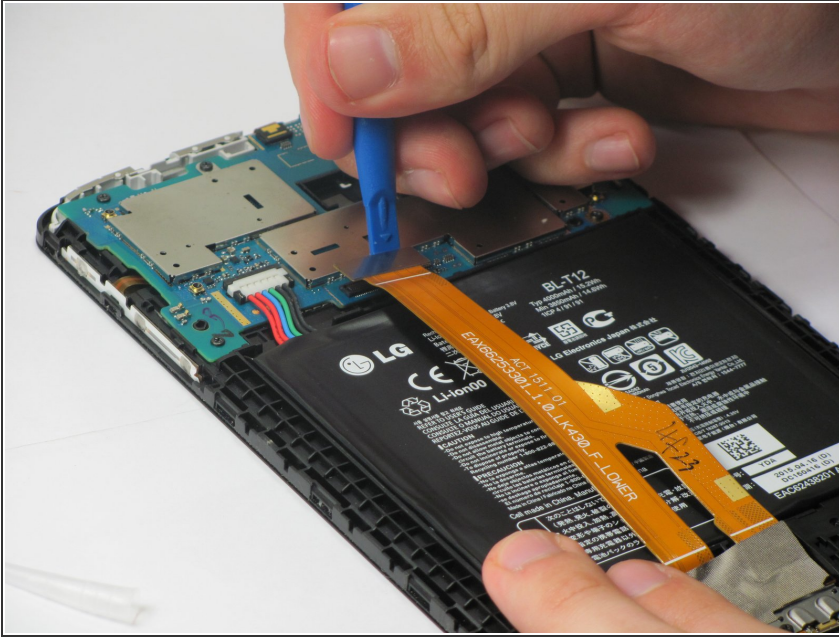
## Step 2



- Use the plastic opening tool to pry the plastic backing off of the internal block. Start at the location with the SIM port to avoid damage to internal components.
- Do this by finding the seam between the edge of the screen and the plastic backing, and prying between the two.
- Work your way all the way around the edge of the screen, and remove the plastic backing when it is loose.



### Step 3



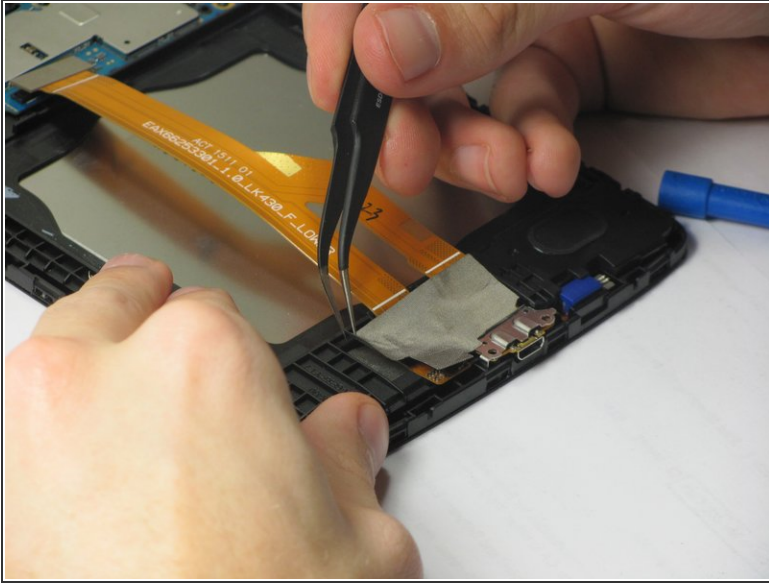
- Locate the top of the large orange ribbon cable.
- Pry it off with the plastic opening tool as shown in the image.

### Step 4



- Remove the gyroscope (the blue rectangular cube) located near the bottom of the device with the plastic opening tool as shown in the image.
- Remove the speaker located in the bottom right corner of the device with the plastic opening tool as shown in the image.

## Step 5



- Remove the two screws located on the charging port as seen in the image using the Phillips screwdriver.
- Using the tweezers, remove the orange ribbon cable along with the charging port.

To reassemble your device, follow these instructions in reverse order.