



# Garmin Nuvi 42LM Back Cover Replacement

This guide shows how to take off the back cover of the Garmin Nuvi 42LM.

Written By: Elina Zhukov



---

## INTRODUCTION

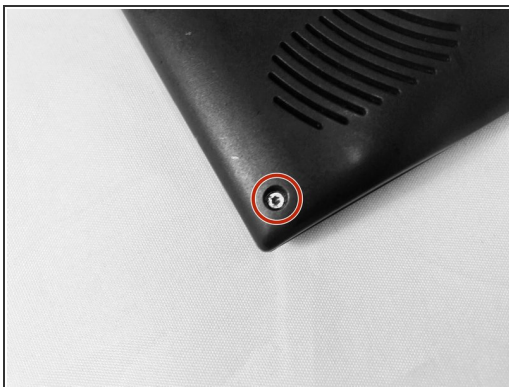
This teardown is a prerequisite to all of the replacement guides for the Garmin Nuvi 42LM. This is because the battery needs to always be removed before working further on the device.

---

### TOOLS:

- [T5 Torx Screwdriver](#) (1)
  - [iFixit Opening Tools](#) (1)
-

## Step 1 — Back Cover



- Remove the four screws on the back of the GPS using the T5 Torx screwdriver.

## Step 2



- Pry the GPS open using a plastic opening tool.
- ⓘ When prying open the device, use caution to avoid damaging the motherboard.

To reassemble your device, follow these instructions in reverse order.