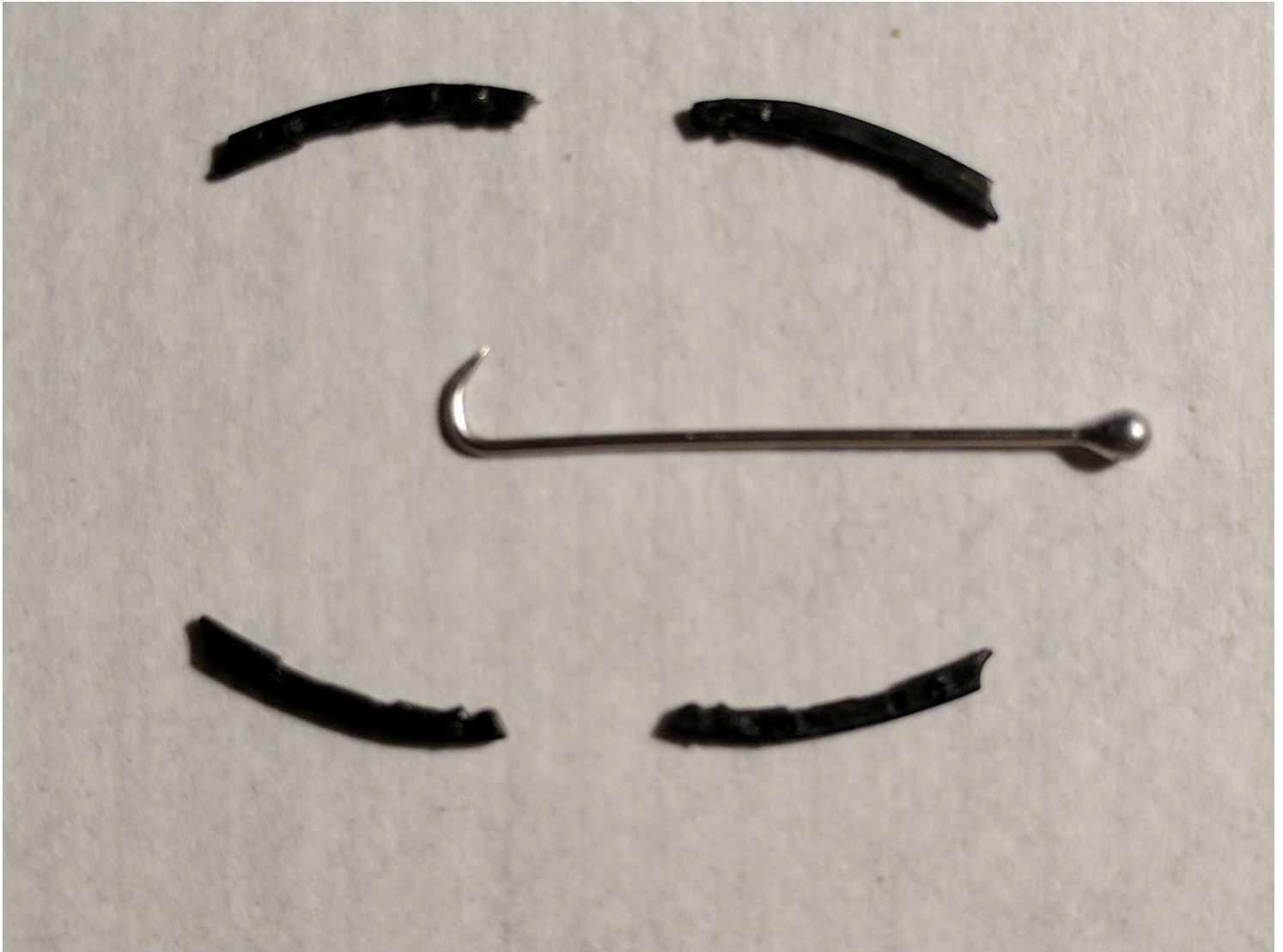




Motorola Moto 360 Case Locking Fastener Replacement

Stop! Don't cook your Moto 360 and go at it...

Written By: Chris K.



INTRODUCTION

Stop! Don't cook your Moto 360 and go at it with an oyster knife just to replace the battery. Just pop out these four fasteners to release the case back.

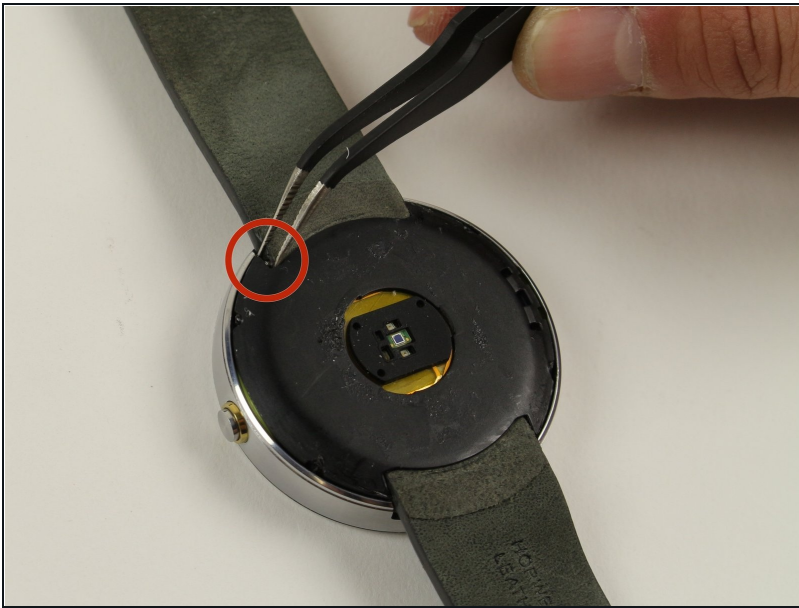
Note: the guide for removing the strap shows a watch with the back cover ripped off. Don't do it! Just remove the strap and go to the next step.

TOOLS:

[Tweezers](#) (1)

[Straight Pin with point bent into a hook.](#) (1)

Step 1 — Wrist Strap



- Locate the spring-loaded pin that attaches the wrist strap to the watch.
- There is a tiny groove on the end of the pin. This is where you will place the [tweezers](#).

Step 2



⚠ Take care not to lose the spring-loaded pin when removing the strap.

- Use the tweezers to compress the spring-loaded pin so the strap can be removed.

Step 3



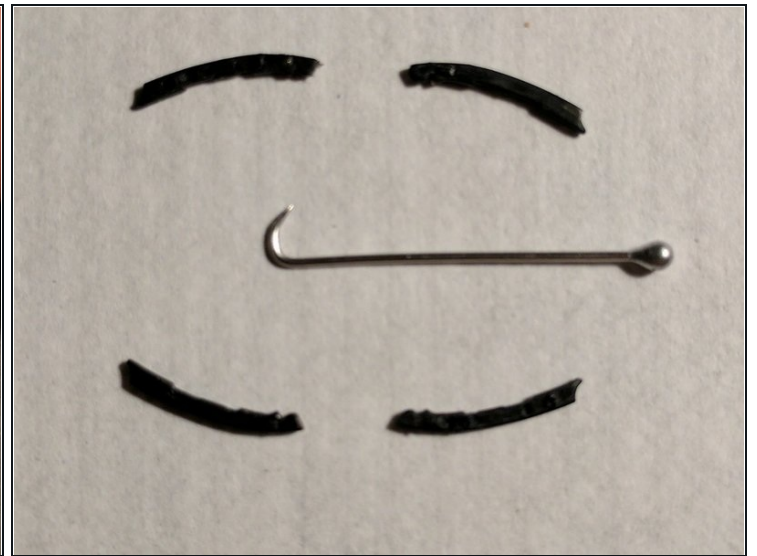
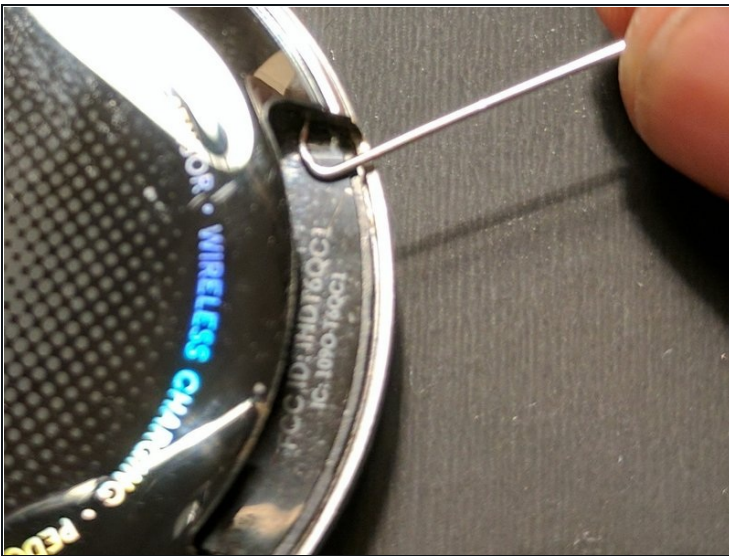
- Pull the wristband away from the watch face.

Step 4 — Case Locking Fasteners



- Locate the rectangular end of the fastener inside the wrist strap mounting pocket.

Step 5



- Push the point of the pin in behind the fastener and pry it out. There is a notch near the end of the fastener which will engage the pin. Once the end pops out, the fastener will slide out of the slot easily. Repeat to remove all four of them.
- That's it. Now the two halves of the watch can be easily separated by just pulling gently with your fingers.

To reassemble your device, follow these instructions in reverse order.