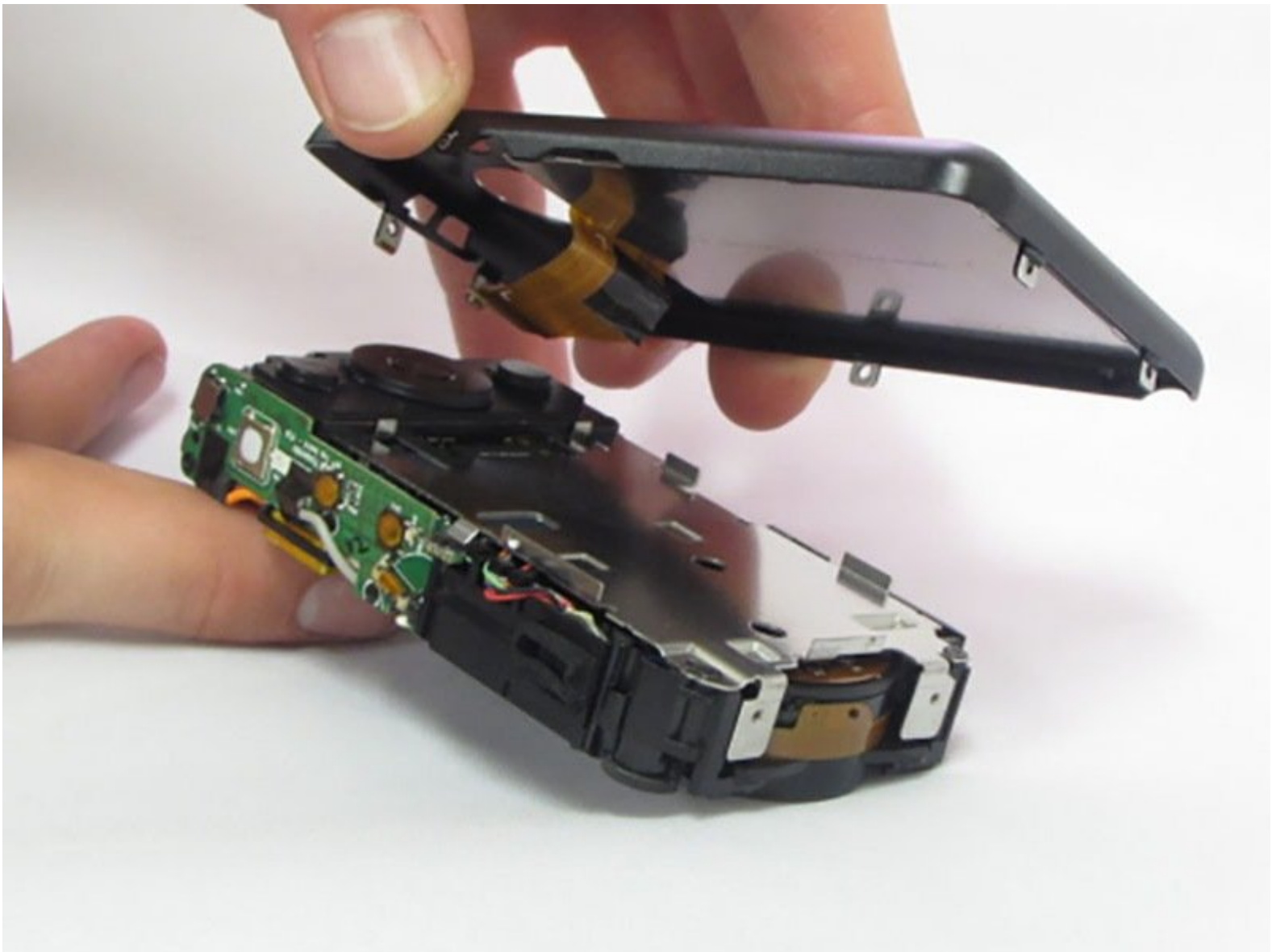




General Electric Create Jason Wu LCD Screen Replacement

This guide will show you the steps necessary to replace the LCD screen in your General Electric Create Jason Wu camera.

Written By: Kailee Poe



INTRODUCTION

This guide will demonstrate how to remove the LCD screen and replace it with a new one.



TOOLS:

- [Phillips #00 Screwdriver](#) (1)
- [iFixit Opening Tools](#) (1)
- [Precision screwdriver kit \(Phillips bits\)](#) (1)
- [Precision Tweezers Set](#) (1)



PARTS:

- [Magnetic Project Mat](#) (1)

Step 1 — General Electric Create Jason Wu Casing Disassembly



- Begin by removing the 5 screws (located: 2 screws on either side and 1 screw on the bottom) using the PH000 head in the Precision Phillips Screwdriver.
- ⓘ These screws were missing in our example. These screws should have been small Phillips PH000 screws 1.5mm in length.
- ⚠ These screws are very small. To keep from losing any pieces, place all small metals on a magnetic project mat.

Step 2



- After the screws are removed, pull the front casing up and away from the camera.
- ⓘ If the casing is difficult to remove, use a plastic opening tool to gently pry up on the front as shown.

Step 3



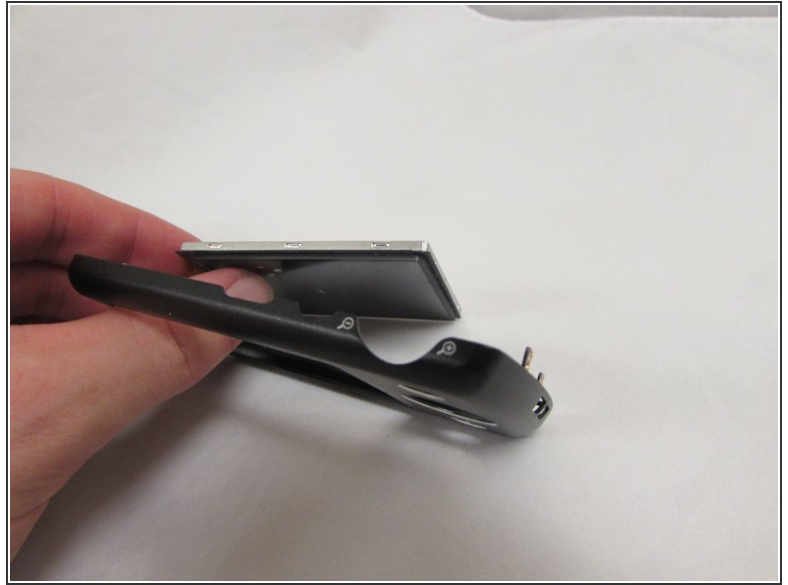
- Using your hands or an opening tool, pry off the silver frame, taking special care at the top of the camera where the buttons are as it is a little harder to pry off.
- ⓘ If the back casing is loose from the camera body, it may be easier to perform step 4 first, then accomplish this step. Proceed as your unit allows.

Step 4



- The last part of the casing to disconnect is the back that houses the LCD screen.
- The screen is attached by a connection ribbon. Gently pull the casing and screen away from the camera body to disconnect the casing.
- ⓘ The LCD screen is held onto the back casing by a small amount of adhesive. This may come loose during this process. Do not worry if they become separated.
- ⚠ This plug and the connection ribbon are fragile, try not to tear the connection ribbon when disconnecting.

Step 5 — LCD Screen



- With the back casing that you just separated from the camera, use your finger to push the LCD screen from the frame.
- ⓘ The LCD screen is secured to the frame with a thin layer of adhesive, not much force is required to removed the screen from the back casing.
- ⓘ Before replacing the back casing with the new LCD screen, please be sure it is secured into the casing with new adhesive.

To reassemble your device, follow these instructions in reverse order.