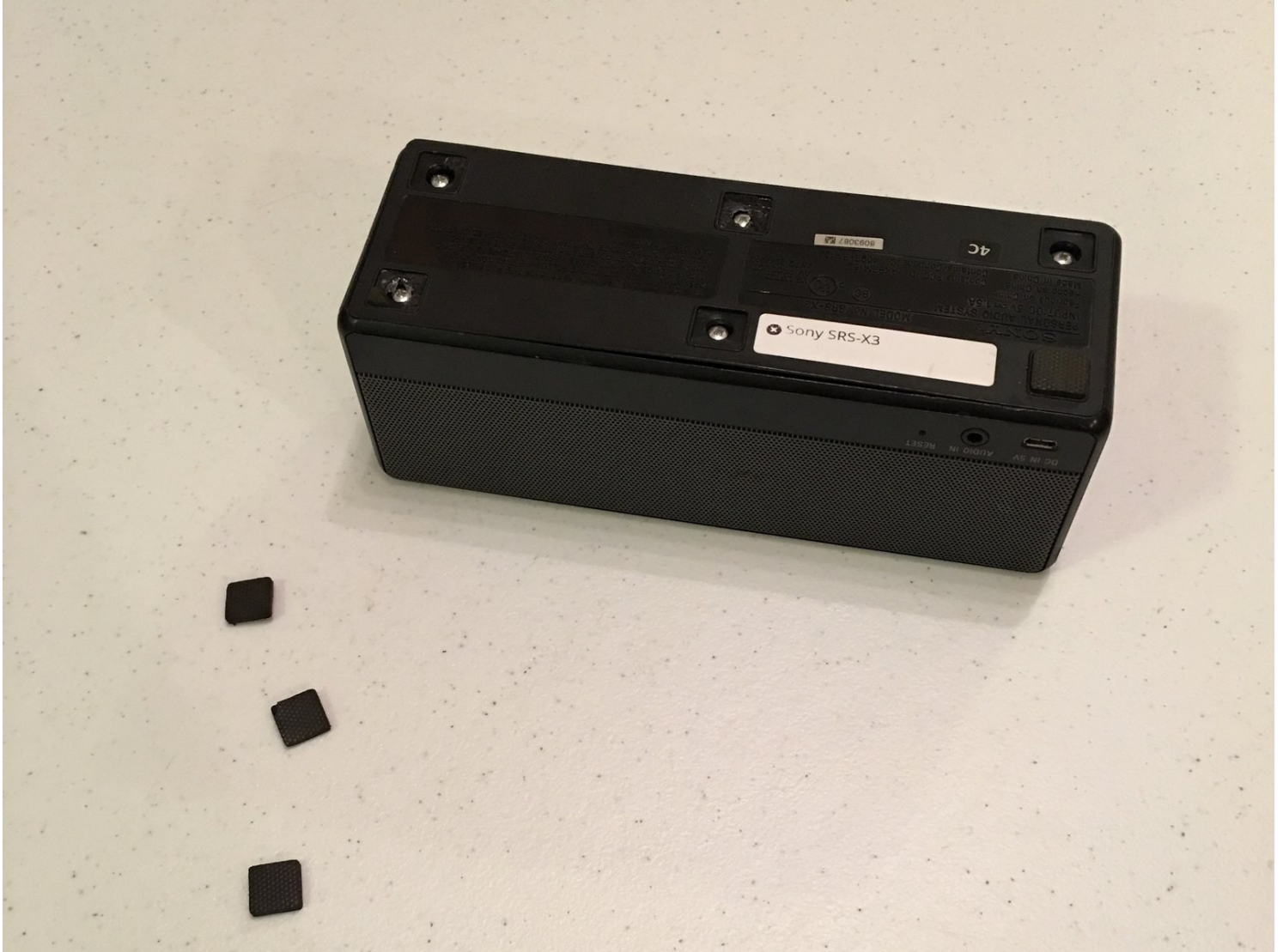




Sony SRS-X3 Speakers Replacement

On this guide, the aim is to teach how to...

Written By: Andrew Troyer



INTRODUCTION

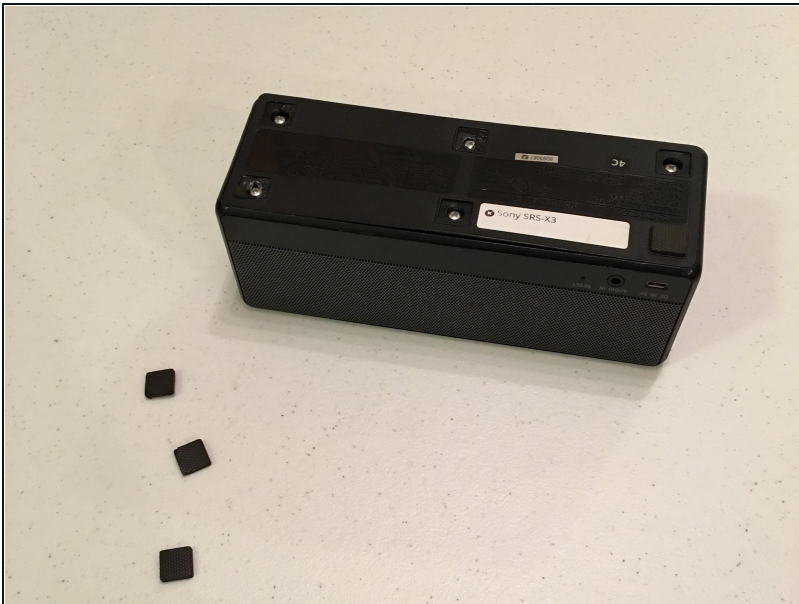
On this guide, the aim is to teach how to disassemble the Sony SRS-X3 bluetooth speaker in order to replace the speakers in the unit. This teardown is fairly simple, and only requires two tools. This speaker replacement is being completed because of a humming sound coming from the unit when music is being played.

TOOLS:

[Metal Spudger](#) (1)

[Phillips #1 Screwdriver](#) (1)

Step 1 — Speakers



- Remove the rubber feet on the bottom of the device.

Step 2



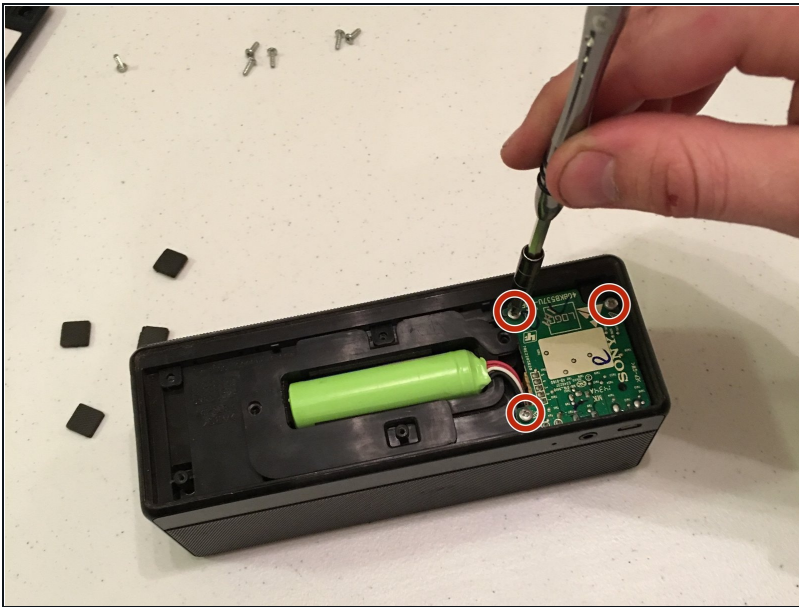
- Remove the 6 silver screws with a Phillips #1 screwdriver.
- Remove the bottom plastic cover of speaker.

Step 3



- Remove the two screws holding the battery pack with the Phillips #1 screwdriver.
- Remove the battery back with a spudger.

Step 4



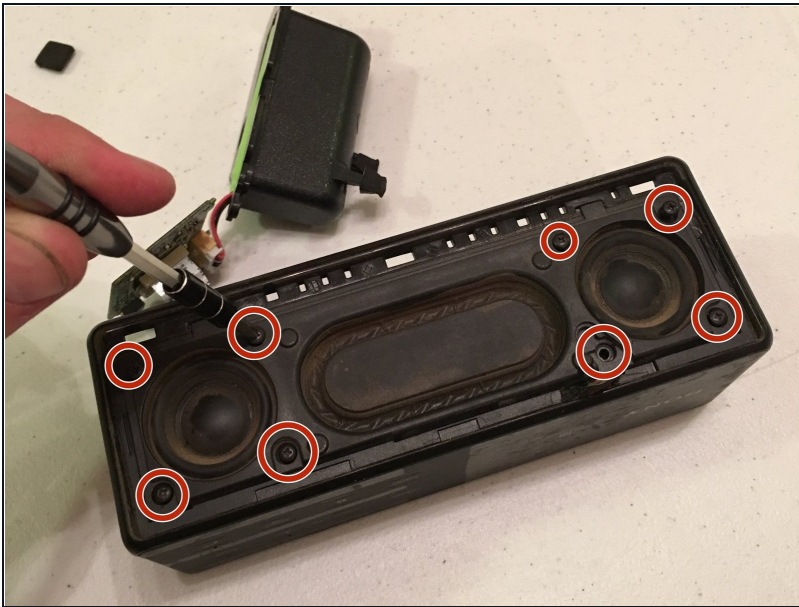
- Remove the three screws using a Phillips #1 screwdriver.
- Remove the green circuit board and the battery pack.
- ⓘ The battery pack and green circuit board will still be connected to the speaker by a ribbon wire.

Step 5



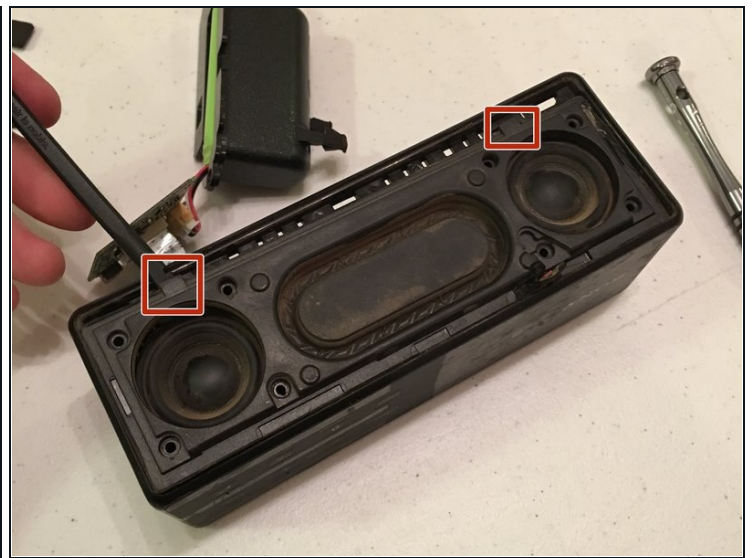
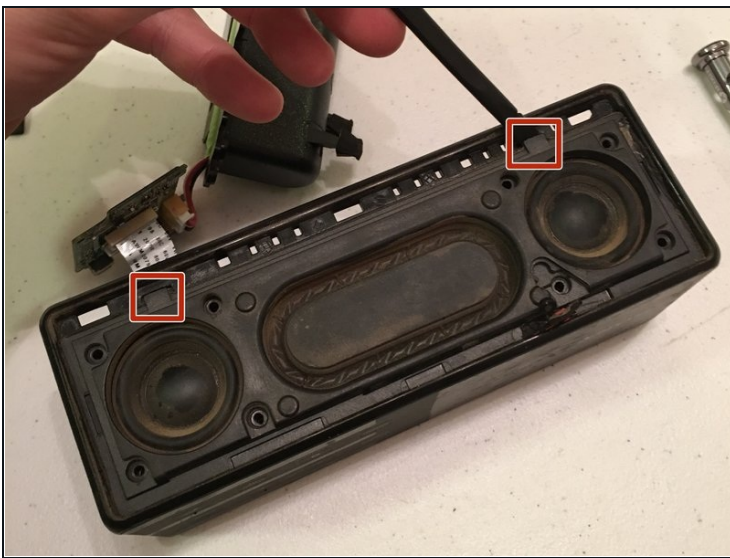
- Pop off the front speaker face (dark grey with little holes) by pushing out 3 tabs where screws were previously located and sticking the spudger in the crack where grey speaker face meets the outer shell.
- You may really have to pry on this part; it is not easy to remove and will pop out when released.

Step 6



- Remove the eight black screws with a Phillips #1 screwdriver.

Step 7



- Remove the front face by prying the two black tabs using a spudger.

ⓘ This face is glued in and may need some elbow grease to remove. Don't worry about breaking anything, as it is all connected.

Step 8



- Remove the speaker wires from each speaker (2 wires per speaker) and take the speakers out of the device.
- ⓘ The speaker wire connectors are made to connect very snug, so they should be hard to remove. Give it a good tug and they should pop off the male end.
- Remove the speakers from the device.

To reassemble your device, follow these instructions in reverse order.