



AvertX HD810 Camera Replacement

This guide covers removing the 4 MP (mega pixel) camera from the plastic housing.

Written By: Luke Browning



INTRODUCTION

This guide will walk you through the necessary steps in order to replace the actual 4MP (mega pixel) camera for the AvertX HD810. Both the 'Clear Dome Cover' and the 'IR LED Light Board' guides are required prerequisites for this guide. You will need a PH1, PH0, and PH000 (Phillips Head) screwdrivers to complete this guide. **It's important to have the camera turned off and unplugged from any power source for this procedure.**



TOOLS:

- [T10 Torx Security Bit Screwdriver](#) (1)
 - [Phillips #1 Screwdriver](#) (1)
 - [Phillips #0 Screwdriver](#) (1)
-

Step 1 — Clear Dome Cover



- Lift off the paintable snap-on cover from the AvertX HD810 dome security camera.

⚠ Optimally, the device should be turned off and the PoE (Power over Ethernet) unplugged.

Step 2



- Loosen **both** 10mm screws on either side of the clear dome cover housing using a T10 Torx security screwdriver.

i It is not recommended to remove the screws from the clear dome cover housing. The screws are apart of the cover and not intended to come out.

Step 3



- Gently pull off the clear dome cover from the camera base.

Step 4 — IR LED Lightboard



- Use the PH1 screwdriver to remove or loosen **both** 10mm screws on either side of the inner protective lens cover. **This will loosen both the cover and the IR LED lightboard.**
- ⓘ The cover and the lightboard are two separate pieces held in place by these two screws. The cover should be set aside first before continuing with the lightboard.

Step 5



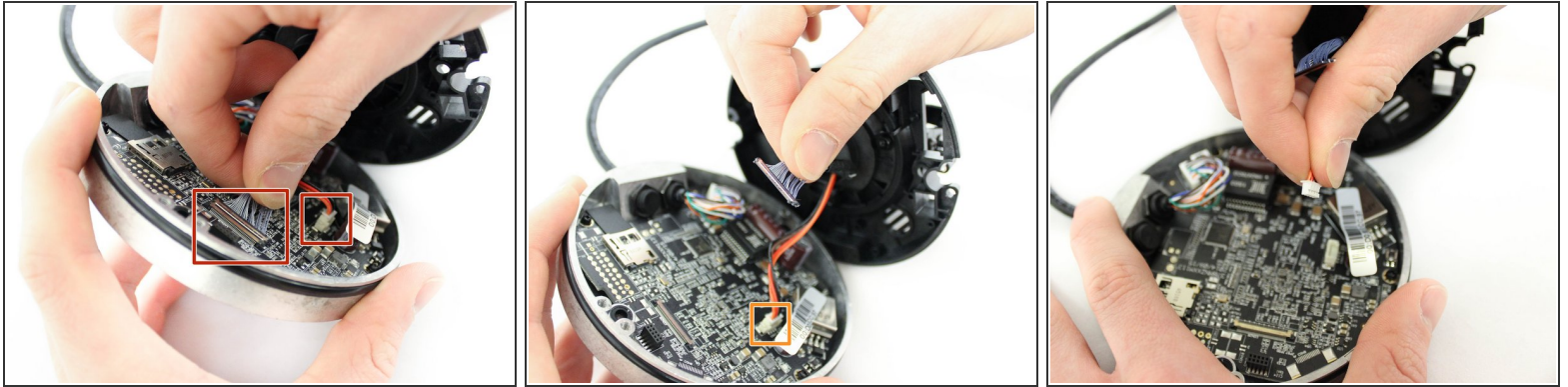
- Pull the IR LED light board gently away from the camera to expose the connecting cable.
- **Firmly but gently** detach the IR LED light board from its cable connector by pulling directly away from the connection port.
- ⓘ A spudger may be used to loosen a stubborn cable connection. Wedge the flat end of the spudger between the connector and the port to ease it off of the port's prongs.

Step 6 — 4 MP Camera



- Using a PH1 screwdriver, remove the two 8mm screws holding the plastic base to the metal base of the camera.
- ☑ Be sure to keep track of your screws and washers. Using the correct Phillips Head screwdriver will help prevent stripping the screws.
- ⚠ Careful when lifting the plastic base away from the metal base. There are two chords that may be damaged if pulled on.

Step 7



- Disconnect the two cables from the camera base motherboard by **gently but firmly** pulling directly away from their respective ports.

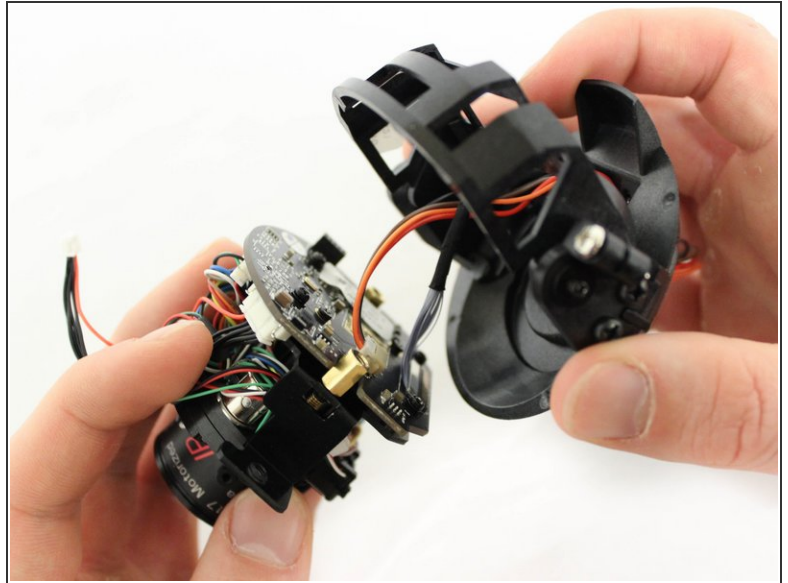
Step 8



- Remove the three 6mm screws with a PH1 screwdriver. These hold the camera's plastic housing to the plastic part of the camera base.

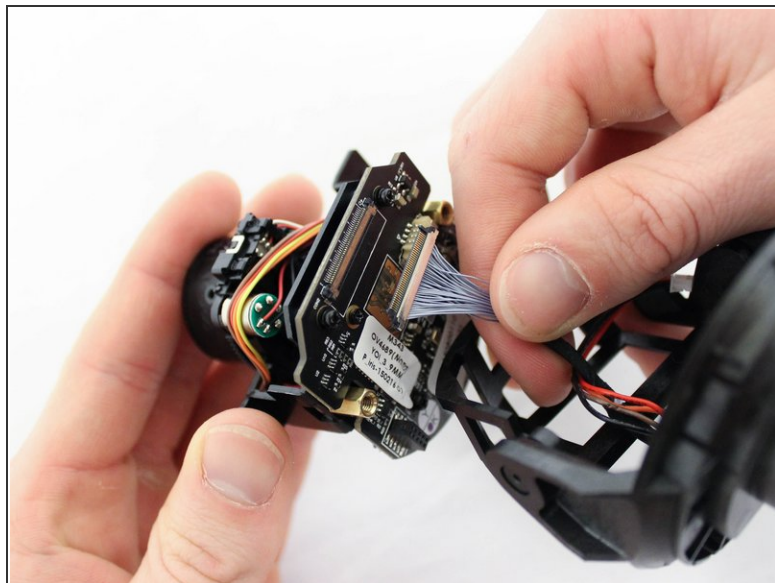
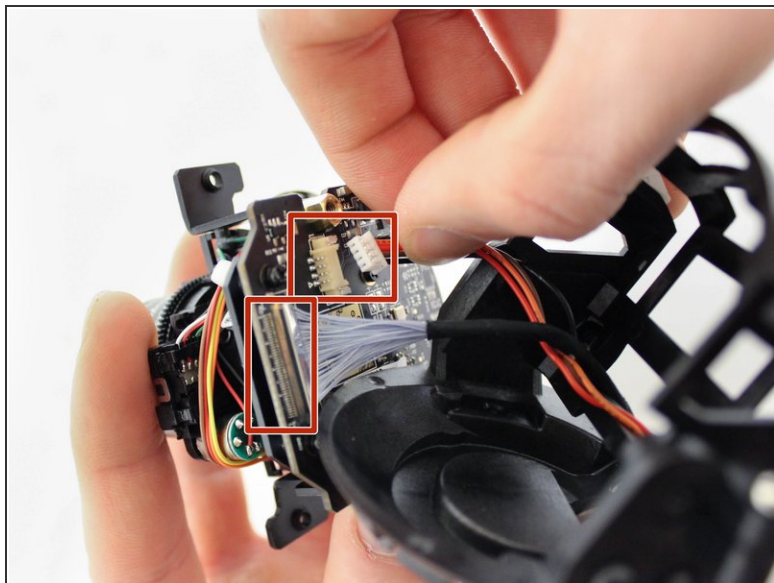
⚠ Do not lose the wide washers. Each of these screws have wide washers to keep the plastic housing in place during assembly.

Step 9



- Gently tilt the camera forward in the cradle of the camera housing to get access to the two 10mm screws.
- Use a PH1 screwdriver to remove the two 10mm screws.
- Pull away the camera housing once the screws have been removed.

Step 10



- Remove the two cables **gently but firmly** by pulling directly away from their respective ports.
- ⓘ The camera housing will always stay attached to these cables. They should **not** be removed from this housing.

To reassemble your device, follow these instructions in reverse order.