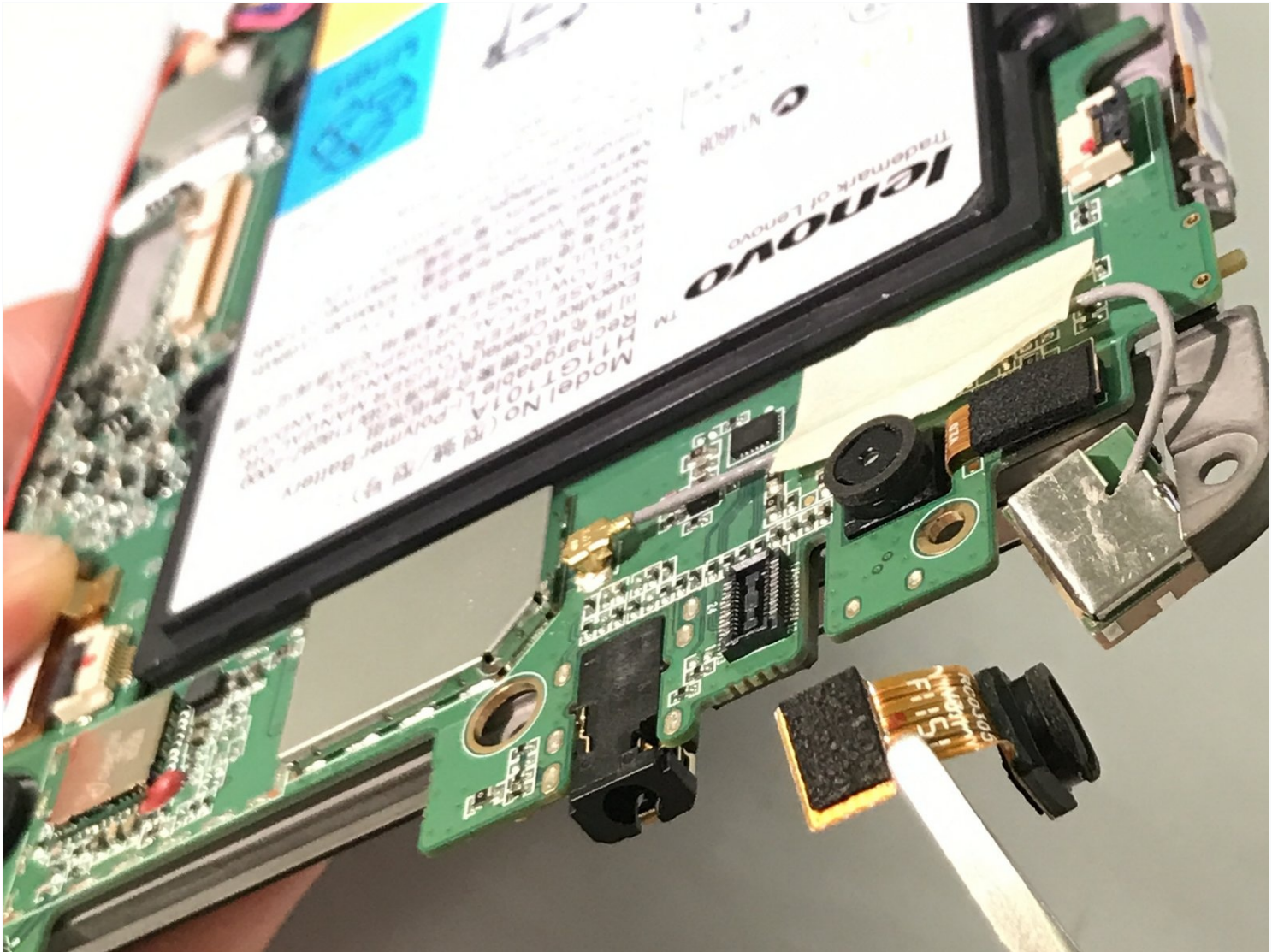




Lenovo Ideatab A1107 Front Camera Replacement

The Lenovo Ideatab A1107 Front Camera...

Written By: Katherine Enders



INTRODUCTION

The Lenovo Ideatab A1107 Front Camera Replacement guide will show users how to safely remove the front camera component from the Lenovo Ideatab A1107. Included in the guide are the proper tools needed to complete the replacement, as well as photos with mark-ups.

TOOLS:

Heavy-Duty Spudger (2)

Tweezers (2)

Phillips #00 Screwdriver (1)

iFixit Opening Tool (2)

Phillips #000 Screwdriver (1)

Step 1 — Back Cover



- Insert a plastic opener in-between the black back panel and the silver body of the tablet.
- Use the plastic opener to pry the back panel off by moving the plastic opener around the outside edge of the device.

Step 2



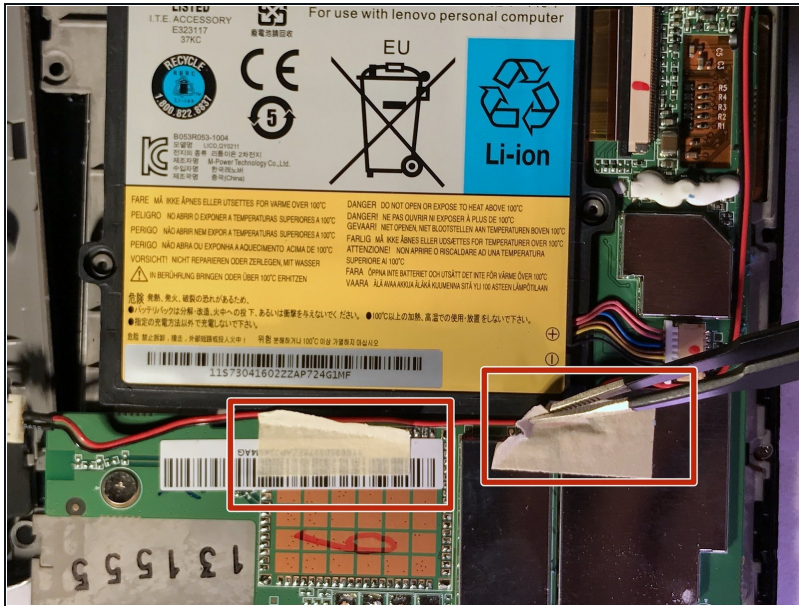
- Use a Phillips #000 screwdriver to remove the seventeen 4mm screws.

Step 3



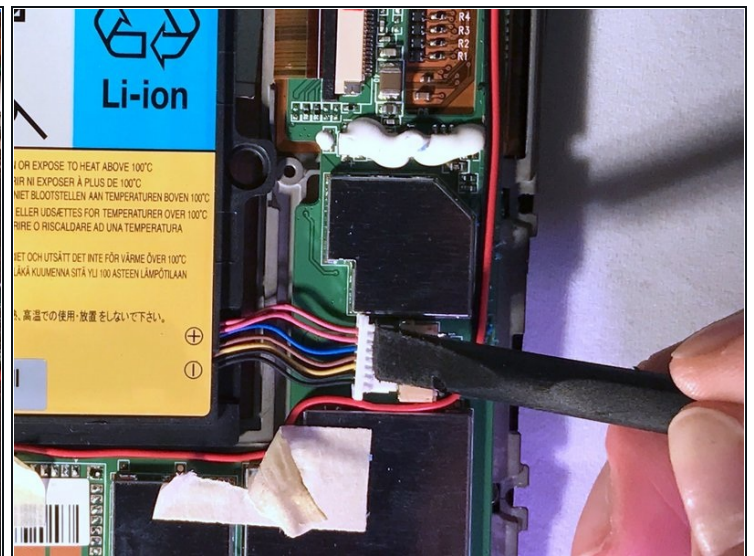
- Lift up and remove the interior casing to expose the inner components.
- ⓘ Do not be alarmed if the volume button and lock button fall off when removing the interior casing.

Step 4 — Battery



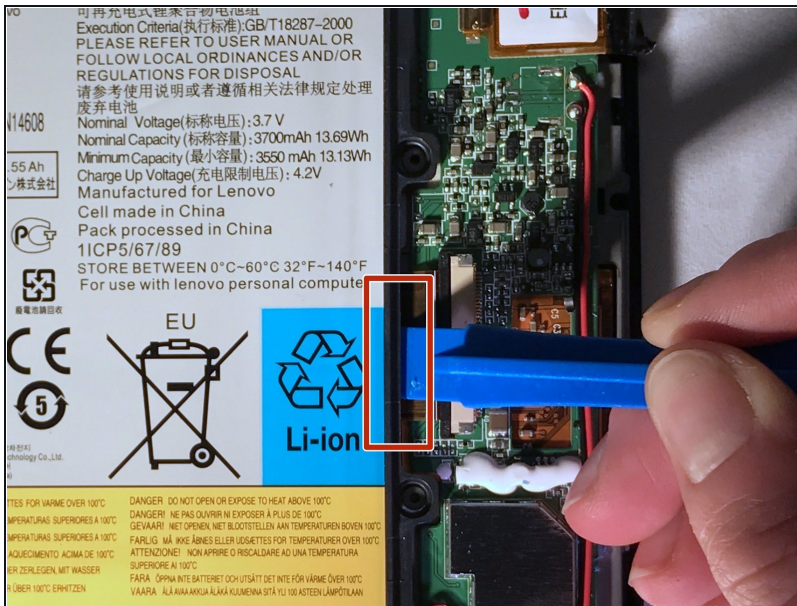
- Use [tweezers](#) to remove the tape covering the battery's wiring.

Step 5



- ⚠ Do not puncture the lithium-ion battery. Ruptured batteries can catch fire or explode.
- ⚠ Do not use metal tools to remove the battery wire. They present the risk of electrocution.
- Use a plastic spudger tool to push the battery's wire harness and disconnect it from the device.

Step 6



⚠ Do not puncture the lithium-ion battery. Ruptured batteries can catch fire or explode.

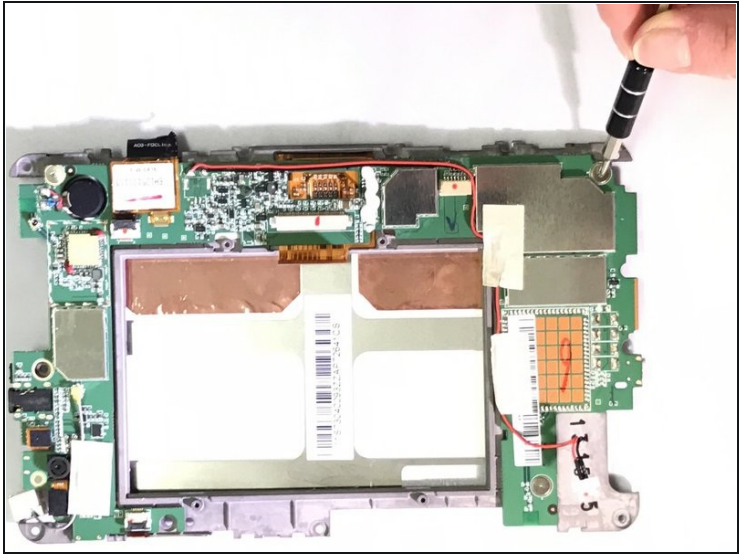
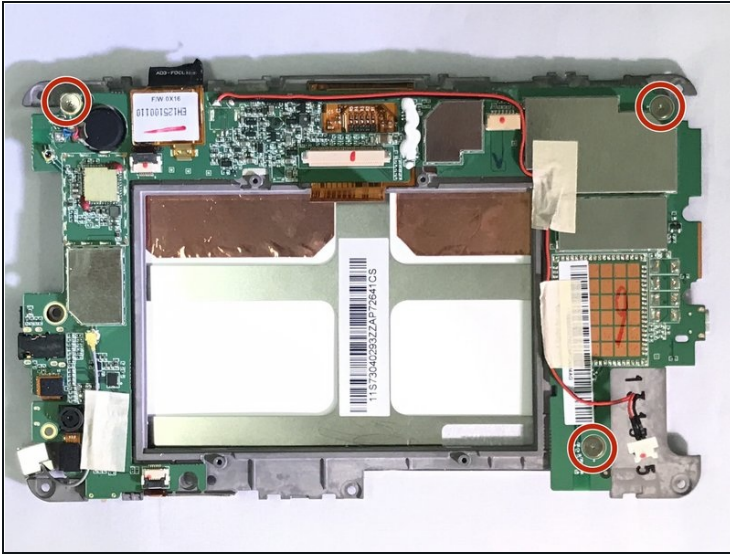
- Wedge a plastic opening tool in between the battery and the internal components of the device.
- Use the plastic opener tool to remove the battery from its casing.

Step 7 — Screen



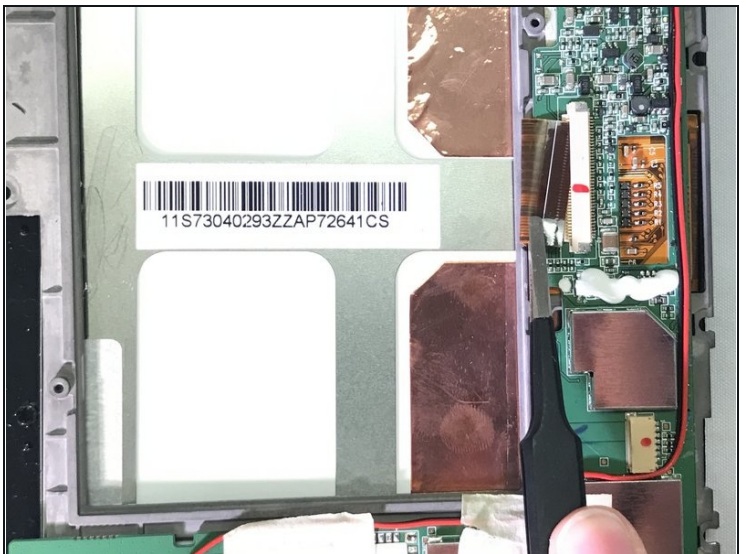
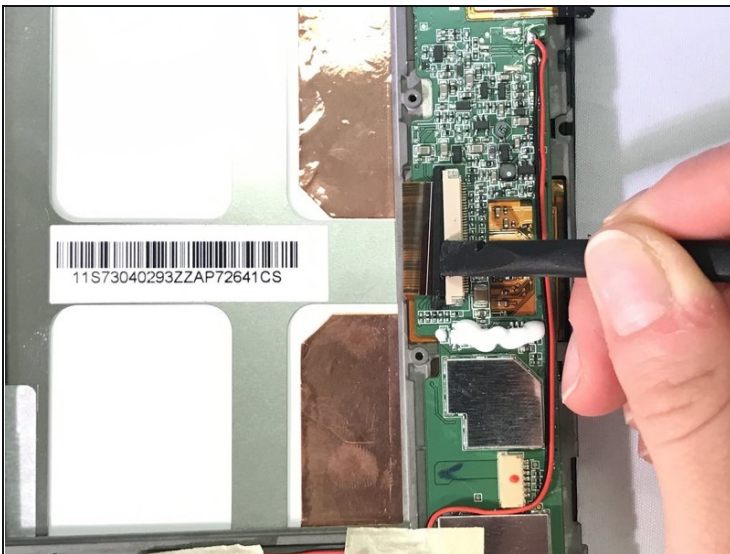
- Using your hands, lift off the digitizer.

Step 8



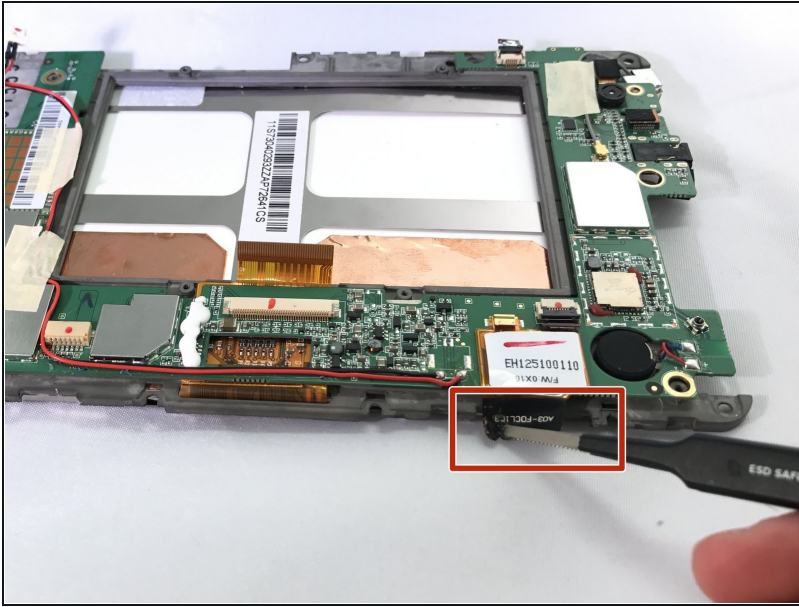
- Remove the three screws that are 2.0 mm in length and have a 5.25 mm head width with a Phillips #00 screwdriver.

Step 9



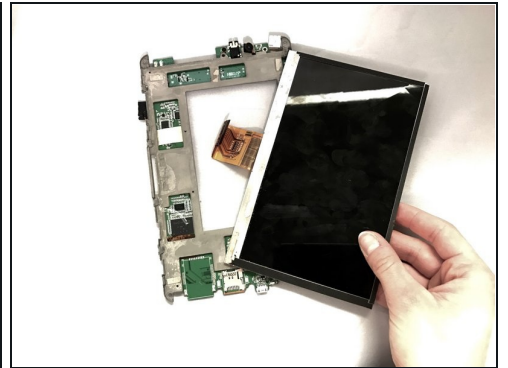
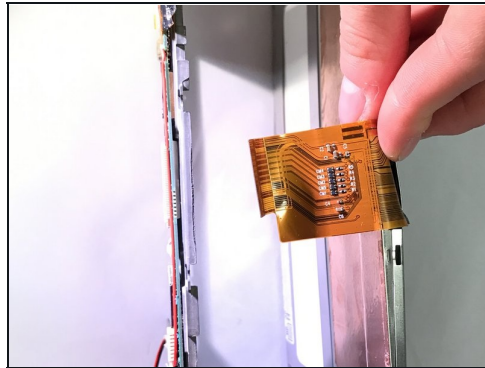
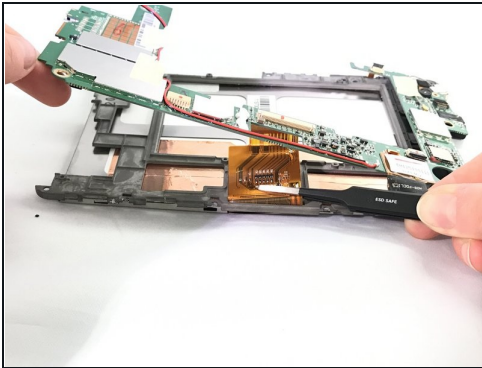
- Use a spudger to remove the plastic piece securing the zero insertion force (ZIF) cable connector.
- Use [tweezers](#) to grasp the ribbon cable, then pull the cable to disconnect it from the device.

Step 10



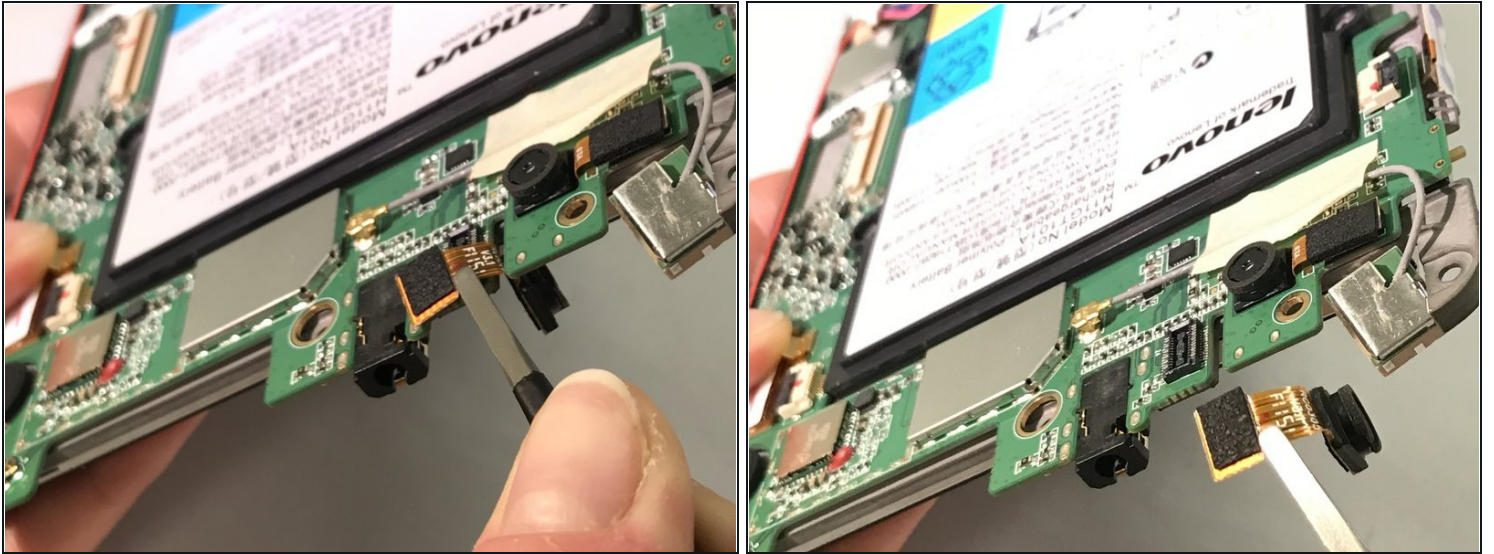
- Locate the black electrical tape strip on the side of the device.
- Gently remove the tape from the device using the tweezers.

Step 11



- After removing the electric tape, gently lift up the green control panel.
- Taking the tweezers, remove the ribbon cable from the control panel.
- Once the ribbon cable is removed from the panel, the display should separate with ease.

Step 12 — Front Camera



- Using the [tweezers](#), pull and remove the front camera component.

To reassemble your device, follow these instructions in reverse order.