



Polaroid PMID701i 10 Speaker Replacement

Written By: Amy Li



INTRODUCTION

If the speakers fail to properly play sound, consider using this guide to replace them.



TOOLS:


- [Phillips #000 Screwdriver](#) (1)
 - [iFixit Opening Tools](#) (1)
 - [Tweezers](#) (1)
 - [Soldering Iron](#) (1)
-

Step 1 — Panel



 Turn off and unplug the device before starting replacement.

● Flip the device so that the screen faces down, with the back facing up.

 The back panel attaches to the device with four 4.0mm long screws, one at each corner, indicated by the red circles in the picture.

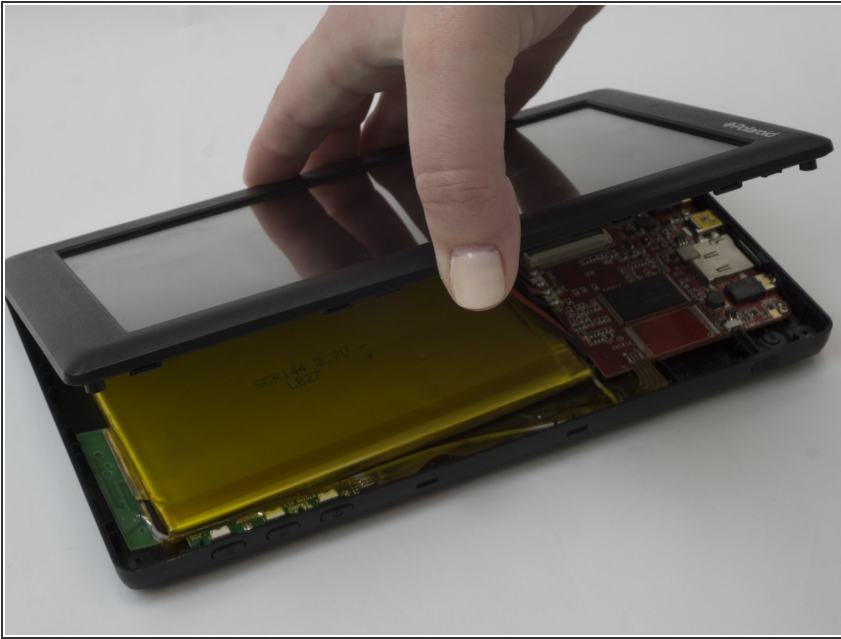
● Unscrew the four screws with a PH000 screwdriver.

Step 2



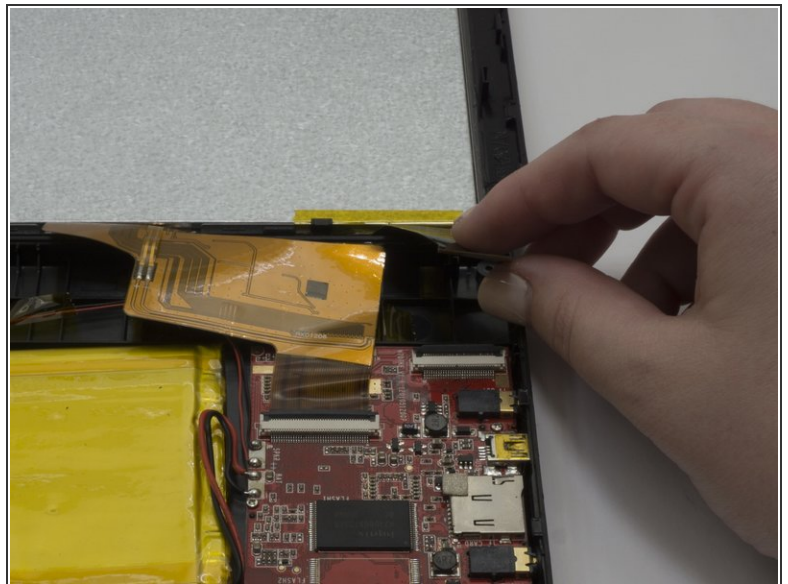
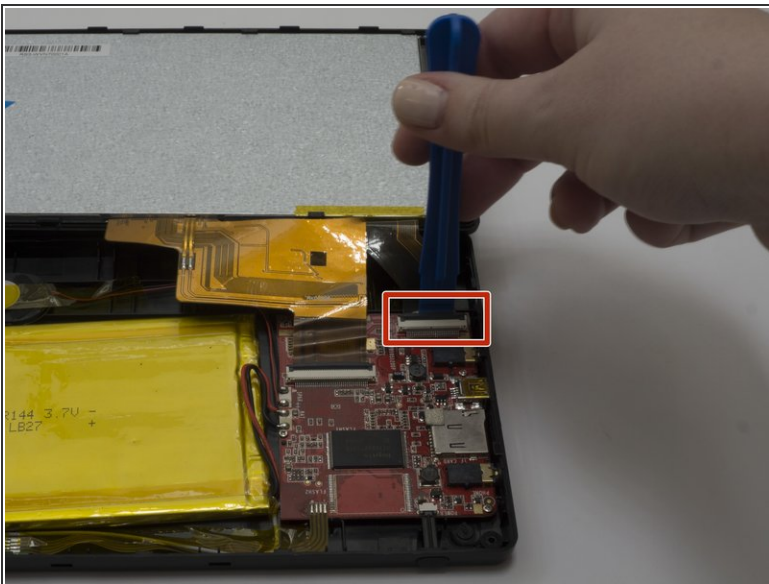
- Flip the device over so that the screen faces up, and the back faces down.
- Separate the front panel using the Opening Tool on a corner to create an opening.
- ⓘ Removing the frame for the first time may take a significant amount of force.
- Run the tool along the seams of the device to open up all the sides.

Step 3



- ⚠ Removing the panel too quickly may damage the cable that attaches parts between the two panels.
- Gently lift the top panel from the bottom panel.

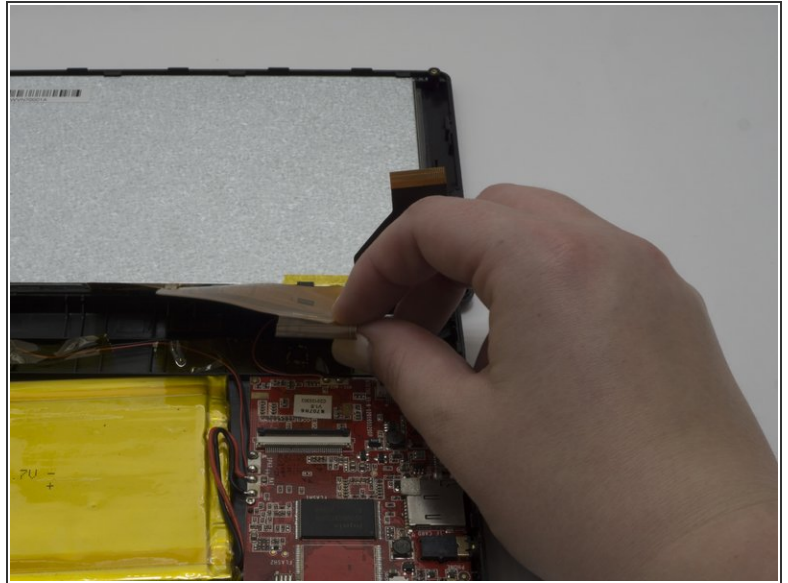
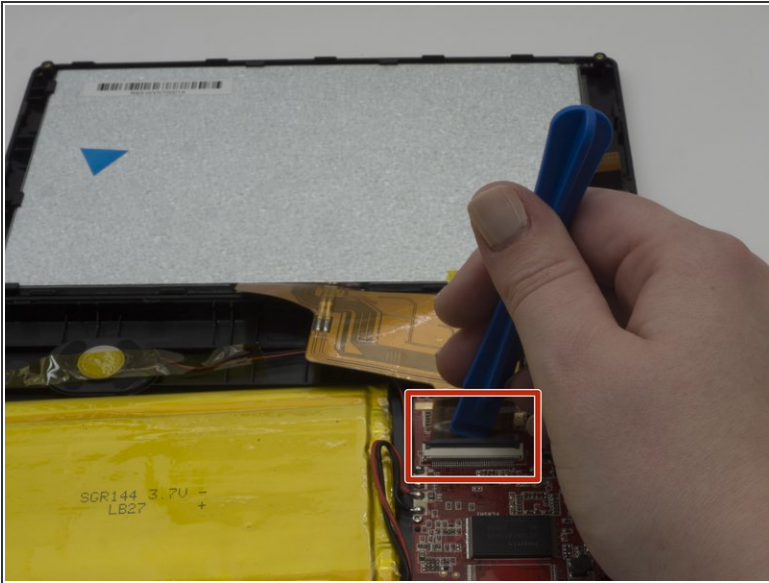
Step 4



- i The flexible flat cables (FFC) attach to parts in the bottom panel with zero insertion force (ZIF) connectors.
- Use the Opening tool to flip up the black retaining flap on the smaller connector.
- Gently lift the cable, parallel to the panel, to detach it.

This document was generated on 2020-11-28 05:36:52 AM (MST).

Step 5



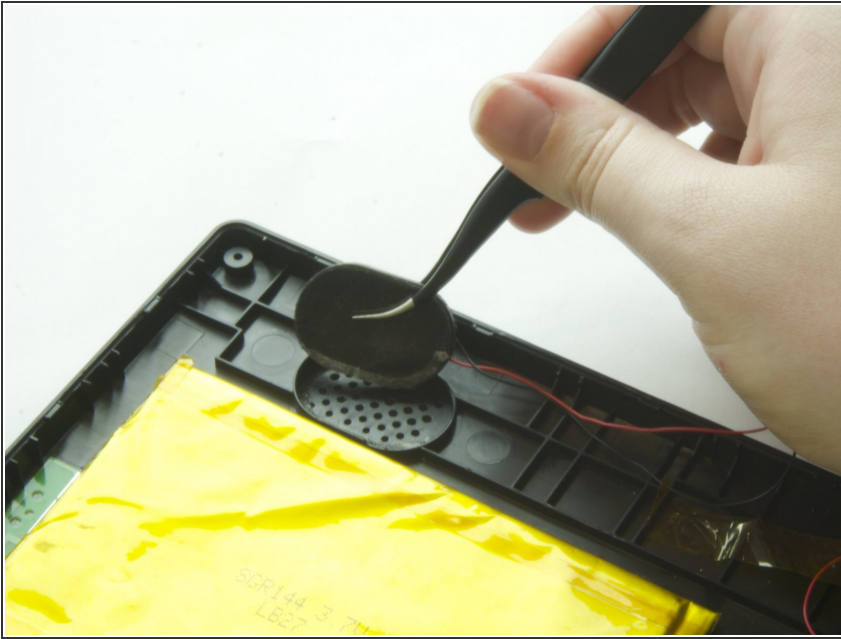
- Use the Opening tool to flip up the black retaining flap on the larger connector.
- Gently lift the cable, parallel to the panel, to detach it.

Step 6 — Speaker



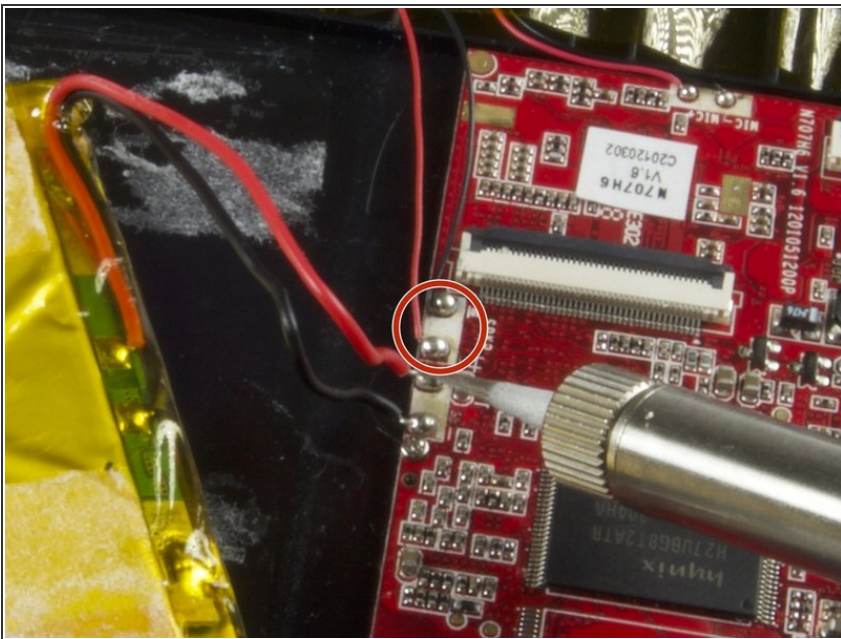
- ⓘ The speaker is glued to a plastic compartment along the sides, with the least amount of glue on the side near the wires.
- Use the tweezers to wedge the speaker out of its compartment, starting from the area near the wires.

Step 7



- Use the tweezers to lift the speakers out of its compartment, including the felt cover attached to the plastic.

Step 8



- ① The speaker attaches to the motherboard with two wires, one red and one black, above the wires for the battery.
- Desolder the wires from the motherboard. For detailed information, refer to the [Solder and Desolder guide](#).

To reassemble your device, follow these instructions in reverse order.