



Polaroid PMID701i 10 Speaker Replacement

If the speakers fail to properly play sound,...

Written By: Amy Li



INTRODUCTION

If the speakers fail to properly play sound, consider using this guide to replace them.

TOOLS:

Phillips #000 Screwdriver (1)

iFixit Opening Tool (1)


Tweezers (1)

Soldering Iron (1)

Step 1 — Panel



 Turn off and unplug the device before starting replacement.

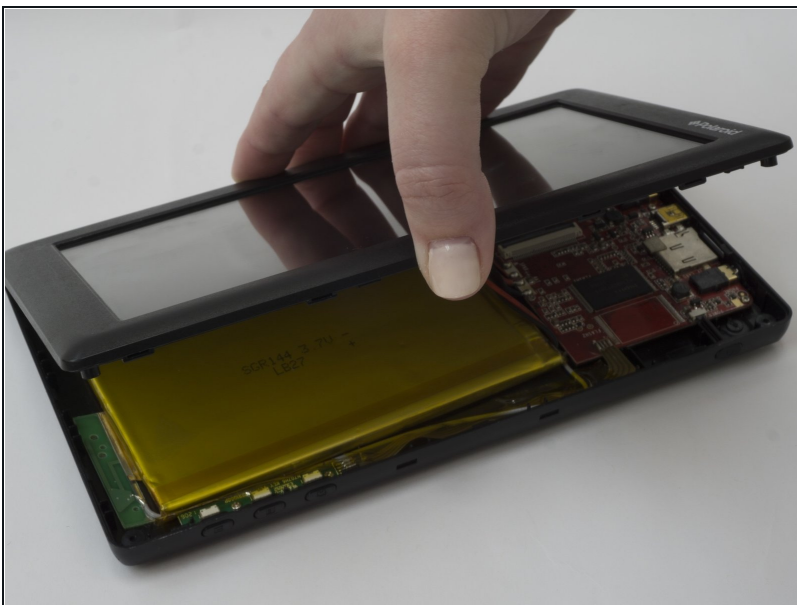
- Flip the device so that the screen faces down, with the back facing up.
-  The back panel attaches to the device with four 4.0mm long screws, one at each corner, indicated by the red circles in the picture.
- Unscrew the four screws with a PH000 screwdriver.

Step 2



- Flip the device over so that the screen faces up, and the back faces down.
- Separate the front panel using the Opening Tool on a corner to create an opening.
- ⓘ Removing the frame for the first time may take a significant amount of force.
- Run the tool along the seams of the device to open up all the sides.

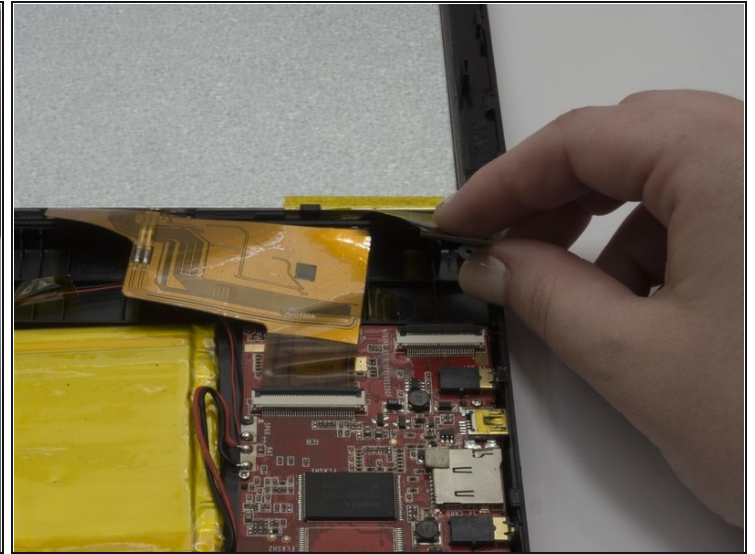
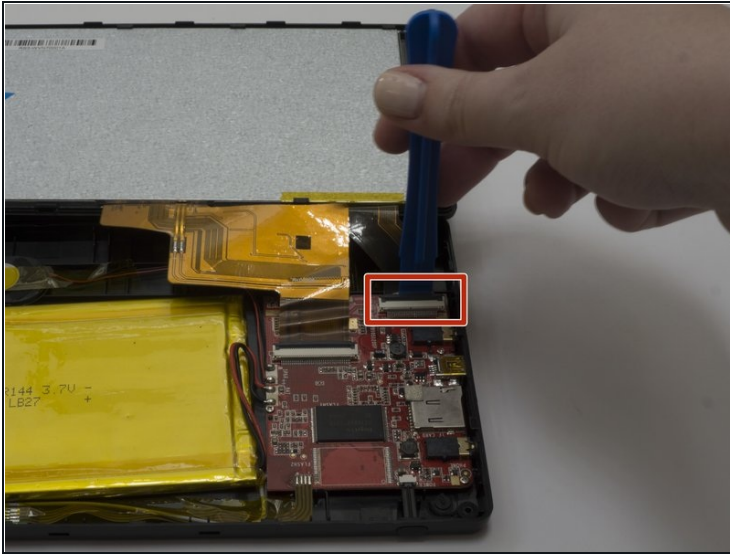
Step 3



⚠ Removing the panel too quickly may damage the cable that attaches parts between the two panels.

- Gently lift the top panel from the bottom panel.

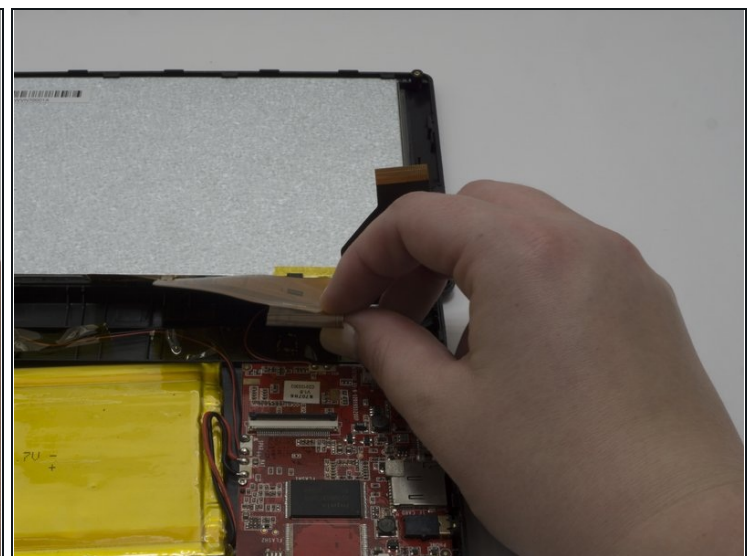
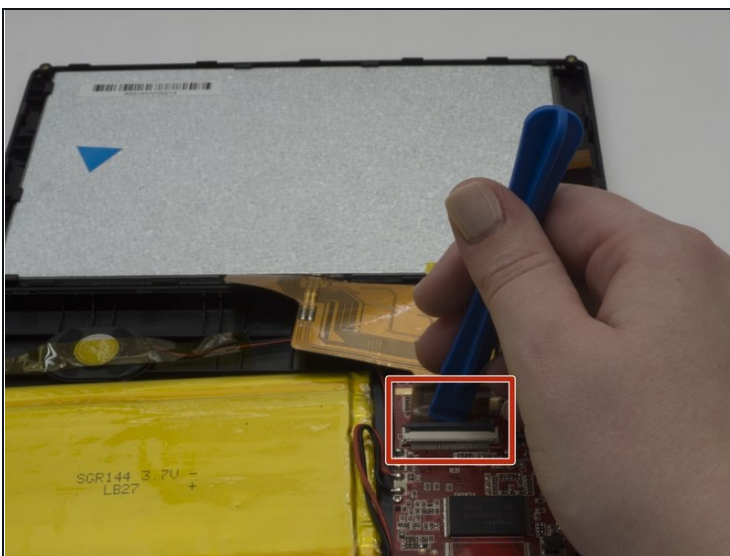
Step 4



❶ The flexible flat cables (FFC) attach to parts in the bottom panel with zero insertion force (ZIF) connectors.

- Use the Opening tool to flip up the black retaining flap on the smaller connector.
- Gently lift the cable, parallel to the panel, to detach it.

Step 5



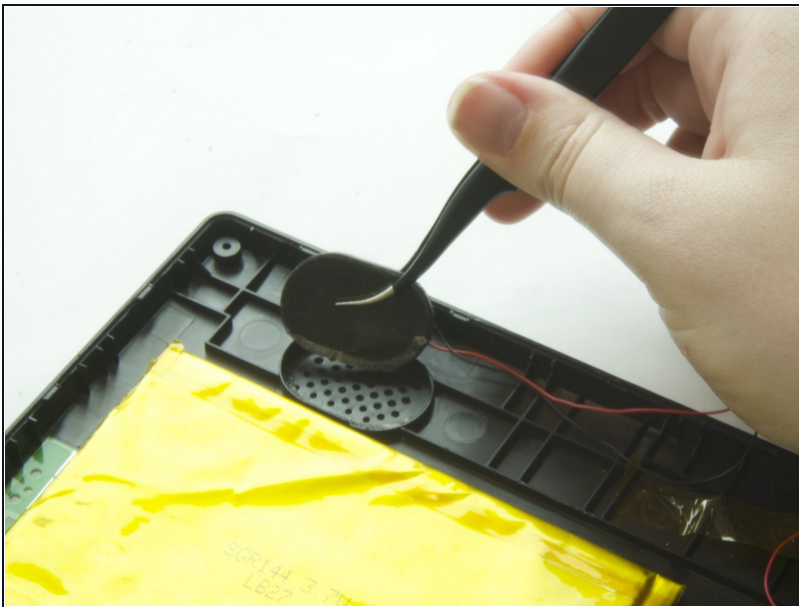
- Use the Opening tool to flip up the black retaining flap on the larger connector.
- Gently lift the cable, parallel to the panel, to detach it.

Step 6 — Speaker



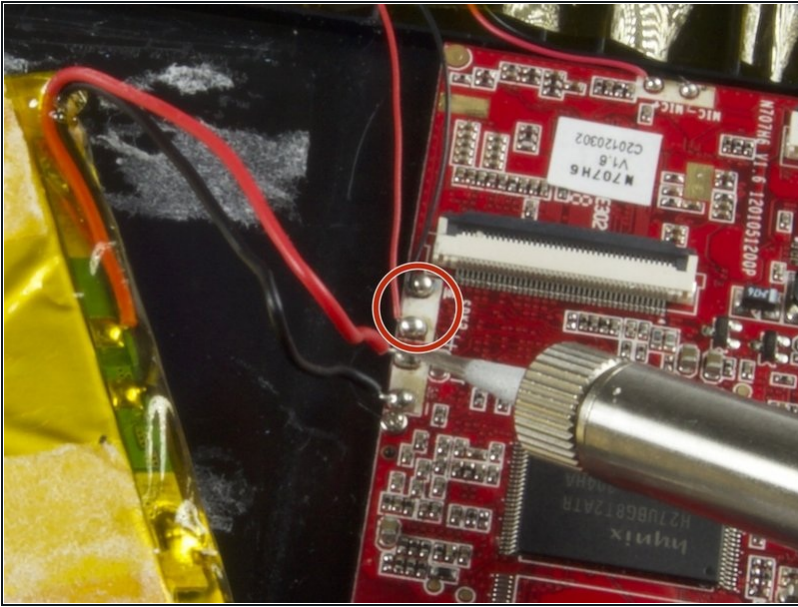
- ① The speaker is glued to a plastic compartment along the sides, with the least amount of glue on the side near the wires.
- Use the [tweezers](#) to wedge the speaker out of its compartment, starting from the area near the wires.

Step 7



- Use the tweezers to lift the speakers out of its compartment, including the felt cover attached to the plastic.

Step 8



- ① The speaker attaches to the motherboard with two wires, one red and one black, above the wires for the battery.
- Desolder the wires from the motherboard. For detailed information, refer to the [Solder and Desolder guide](#).

To reassemble your device, follow these instructions in reverse order.