



Polaroid PMID701i 10 Battery Replacement

Written By: Amy Li



INTRODUCTION

If the device loses charge more quickly than expected, or fails to charge, consider using this guide to replace it.




TOOLS:

- [Phillips #000 Screwdriver](#) (1)
 - [iFixit Opening Tools](#) (1)
 - [Soldering Iron](#) (1)
-

Step 1 — Panel



 Turn off and unplug the device before starting replacement.

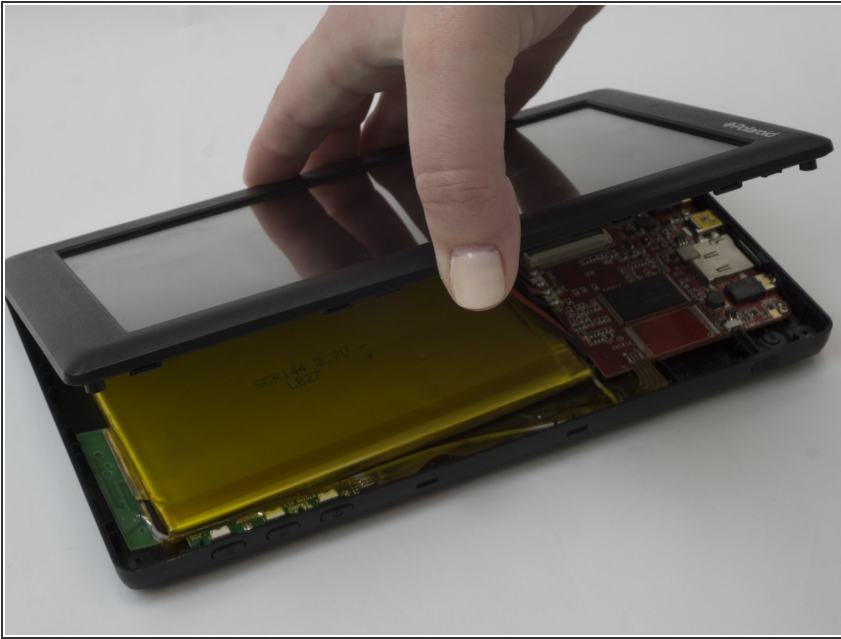
- Flip the device so that the screen faces down, with the back facing up.
-  The back panel attaches to the device with four 4.0mm long screws, one at each corner, indicated by the red circles in the picture.
- Unscrew the four screws with a PH000 screwdriver.

Step 2



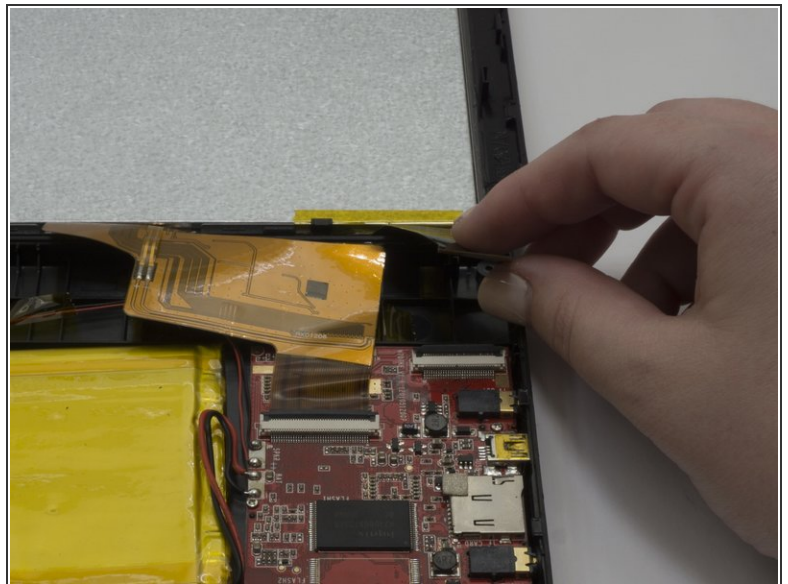
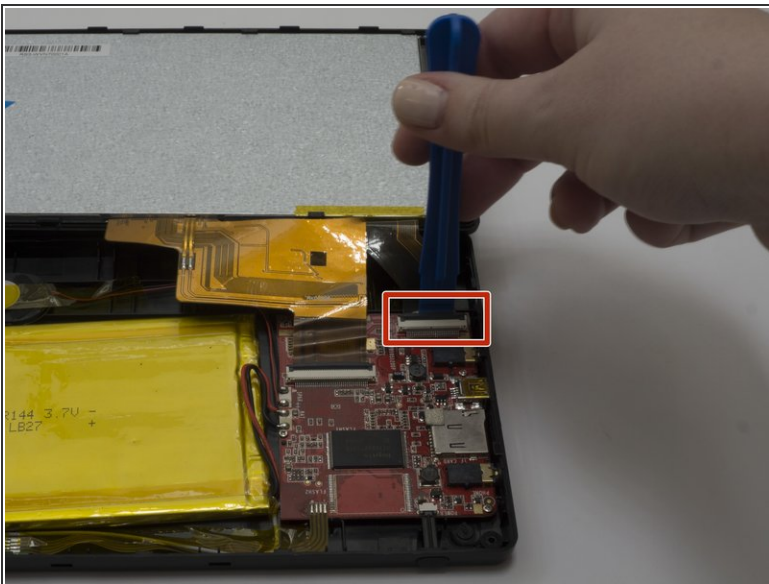
- Flip the device over so that the screen faces up, and the back faces down.
- Separate the front panel using the Opening Tool on a corner to create an opening.
- ⓘ Removing the frame for the first time may take a significant amount of force.
- Run the tool along the seams of the device to open up all the sides.

Step 3



- ⚠ Removing the panel too quickly may damage the cable that attaches parts between the two panels.
- Gently lift the top panel from the bottom panel.

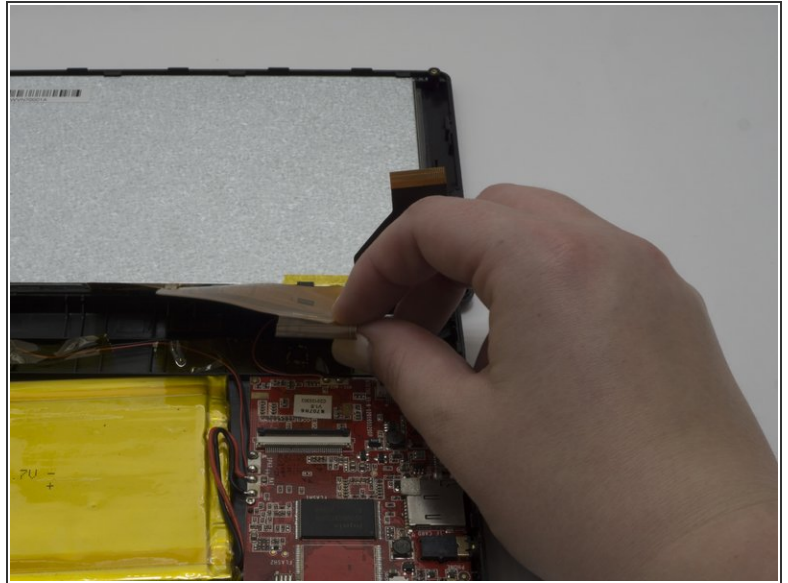
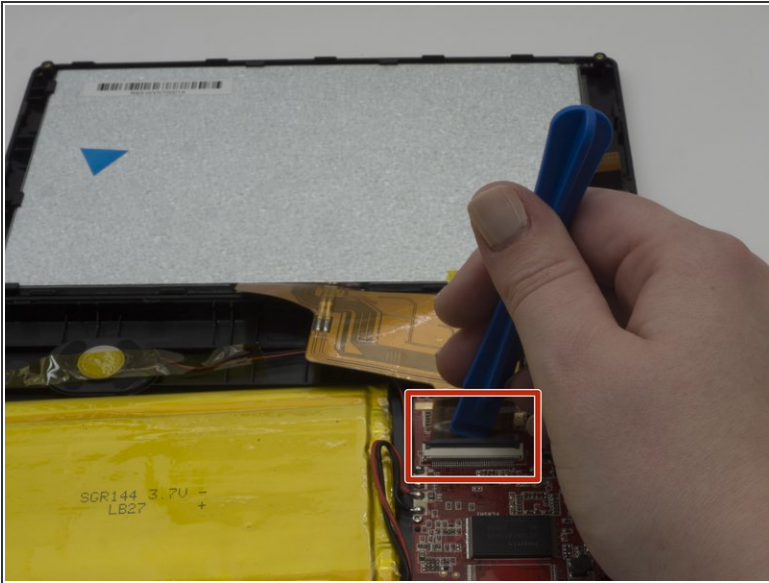
Step 4



- ⓘ The flexible flat cables (FFC) attach to parts in the bottom panel with zero insertion force (ZIF) connectors.
- Use the Opening tool to flip up the black retaining flap on the smaller connector.
- Gently lift the cable, parallel to the panel, to detach it.

This document was generated on 2020-11-28 05:36:34 AM (MST).

Step 5



- Use the Opening tool to flip up the black retaining flap on the larger connector.
- Gently lift the cable, parallel to the panel, to detach it.

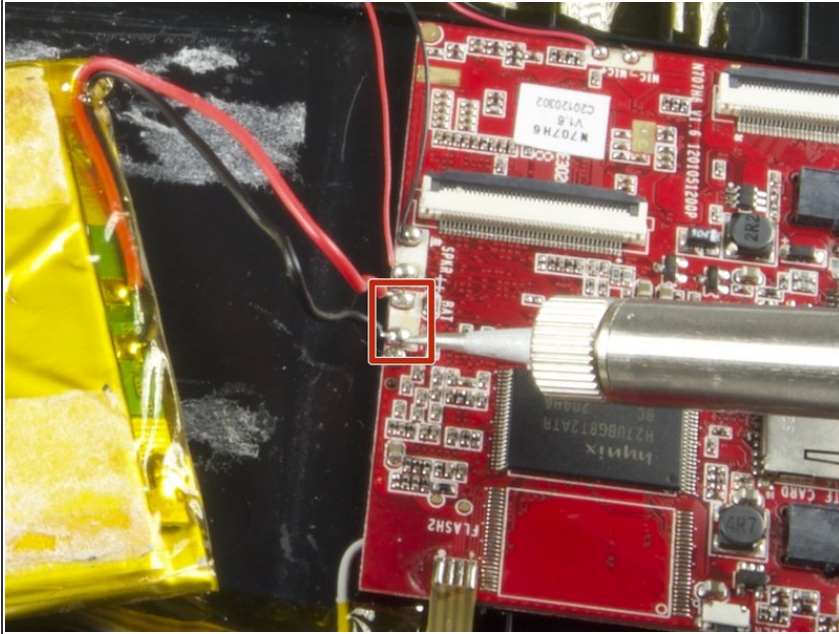
Step 6 — Battery



- ⓘ The battery is wrapped with tape. It is attached to the back plastic panel by glue.
- ⚠ The battery may bend if detached using a spudger or other small tool.
- Grip the the battery by hand.
- ⓘ Due to the glue and shape of the battery it, it may take a significant amount of force to lift it.

- Lift the battery, by hand, to remove it from the glue and panel.

Step 7



- ① The battery attaches to the motherboard with two wires, one red and one black.
- Desolder the wires from the motherboard. For detailed information, refer to the [Solder and Desolder guide](#).

Step 8



- Gently remove the battery, with the wires, from the panel and motherboard completely.

To reassemble your device, follow these instructions in reverse order.