



# Samsung SmartCam HD Pro Casing Replacement

This guide will show you how to open up the security camera's shell safely without damaging the device.

Written By: AllisonBridges





## TOOLS:

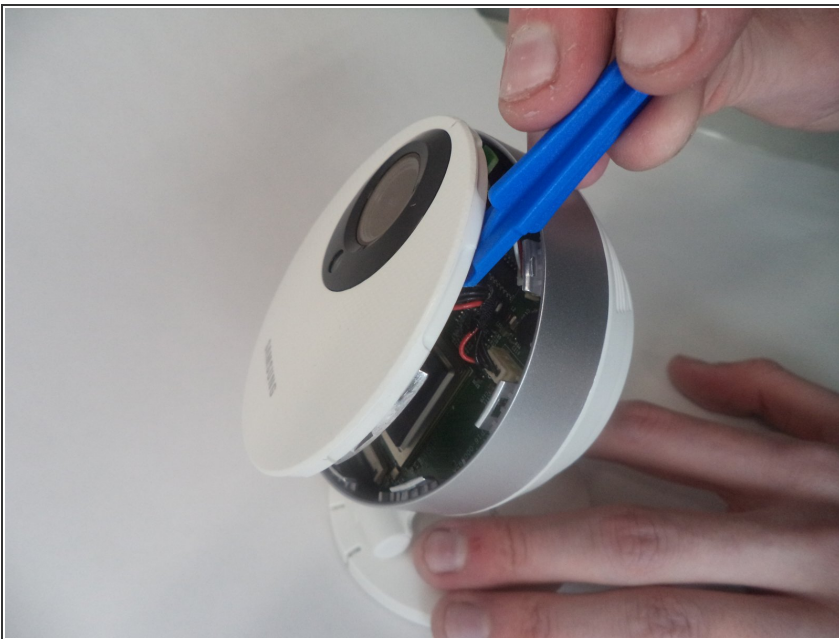
- [iFixit Opening Tools](#) (1)
-

## Step 1 — Casing



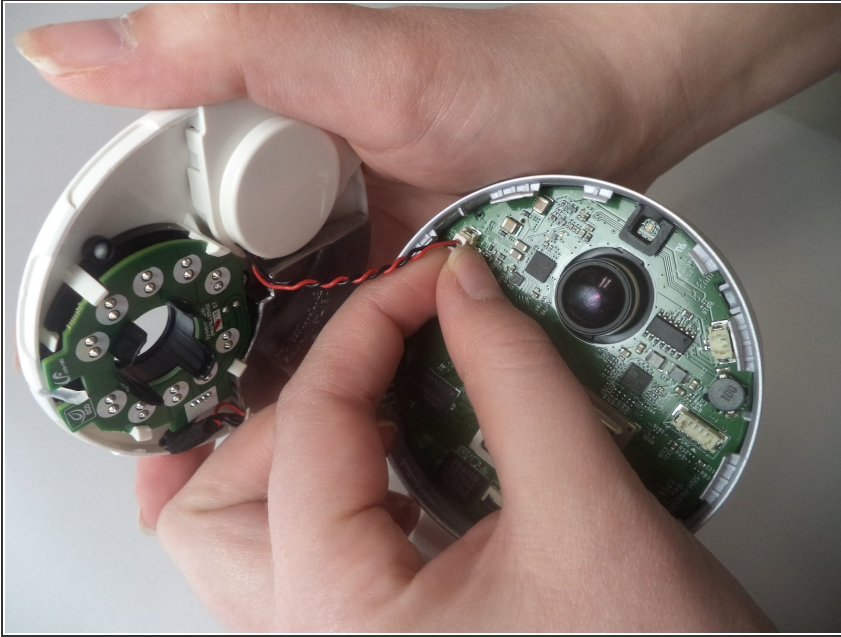
- Locate a small opening around the front panel of the camera.

## Step 2



- Using a plastic opening tool, apply pressure to various points around the camera to pry open the front panel.

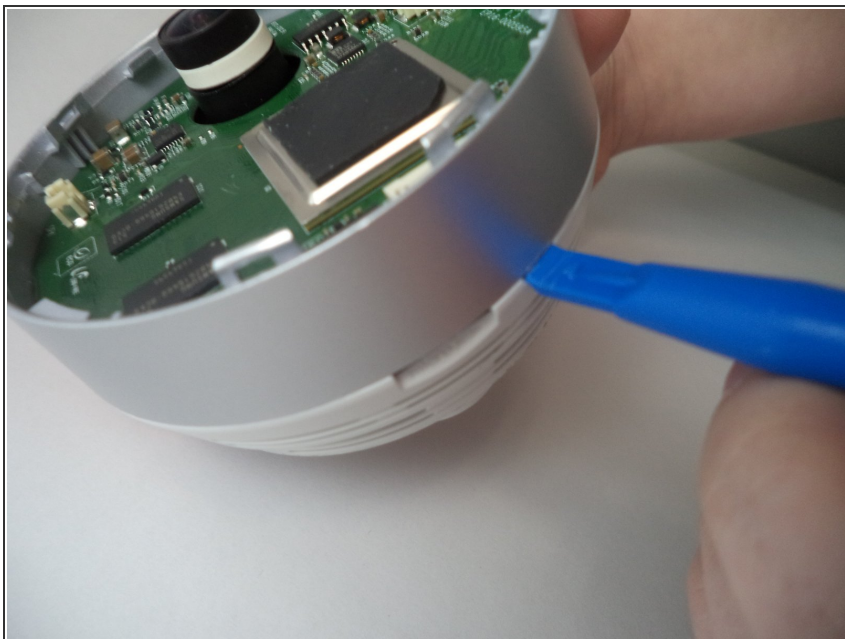
## Step 3



- Remove both of the connecting wires from the motherboard.
- Be careful to not bend headers or damage the wires.



## Step 4



- Apply a plastic opening tool to the gray plastic band around the case of the camera. Insert the edge of the spudger between the case of the camera and the gray plastic band.

## Step 5



- Apply pressure with the plastic opening tool to various areas of the gray plastic band to pry it from the white plastic back of the case.

To reassemble your device, follow these instructions in reverse order.